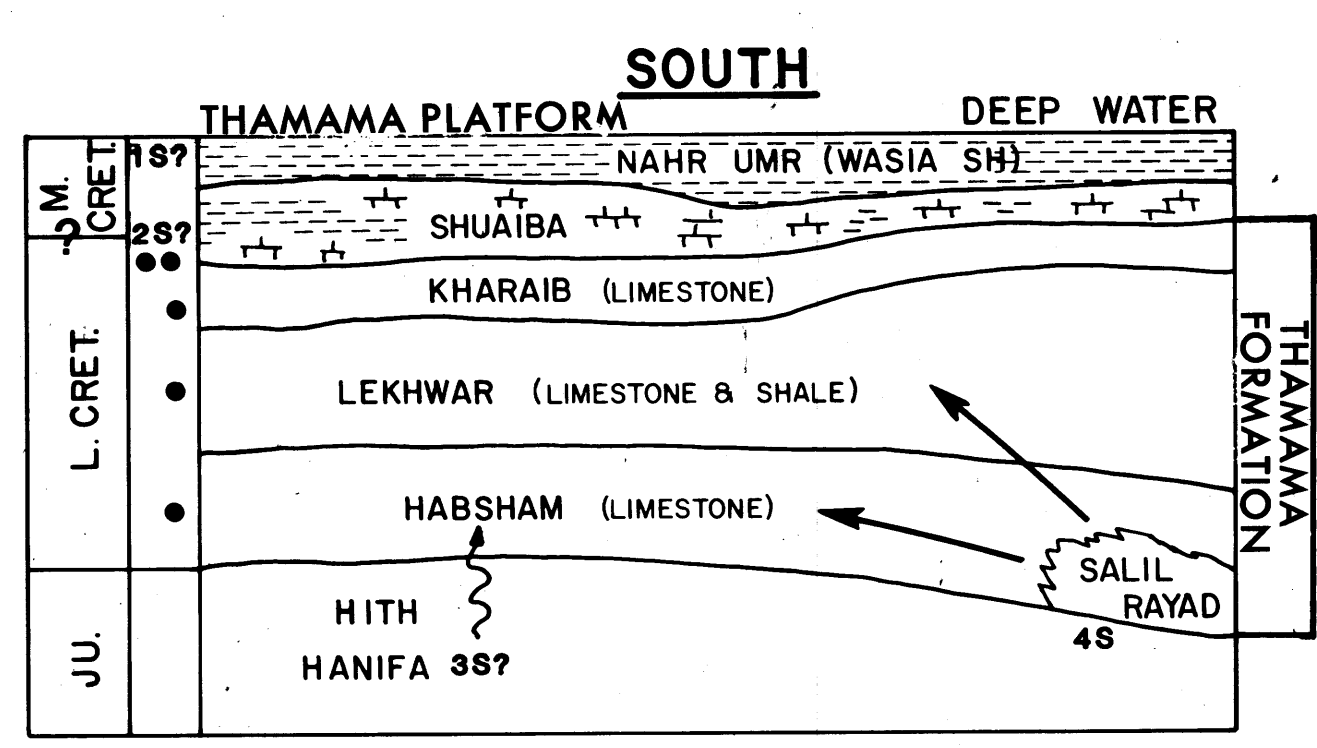
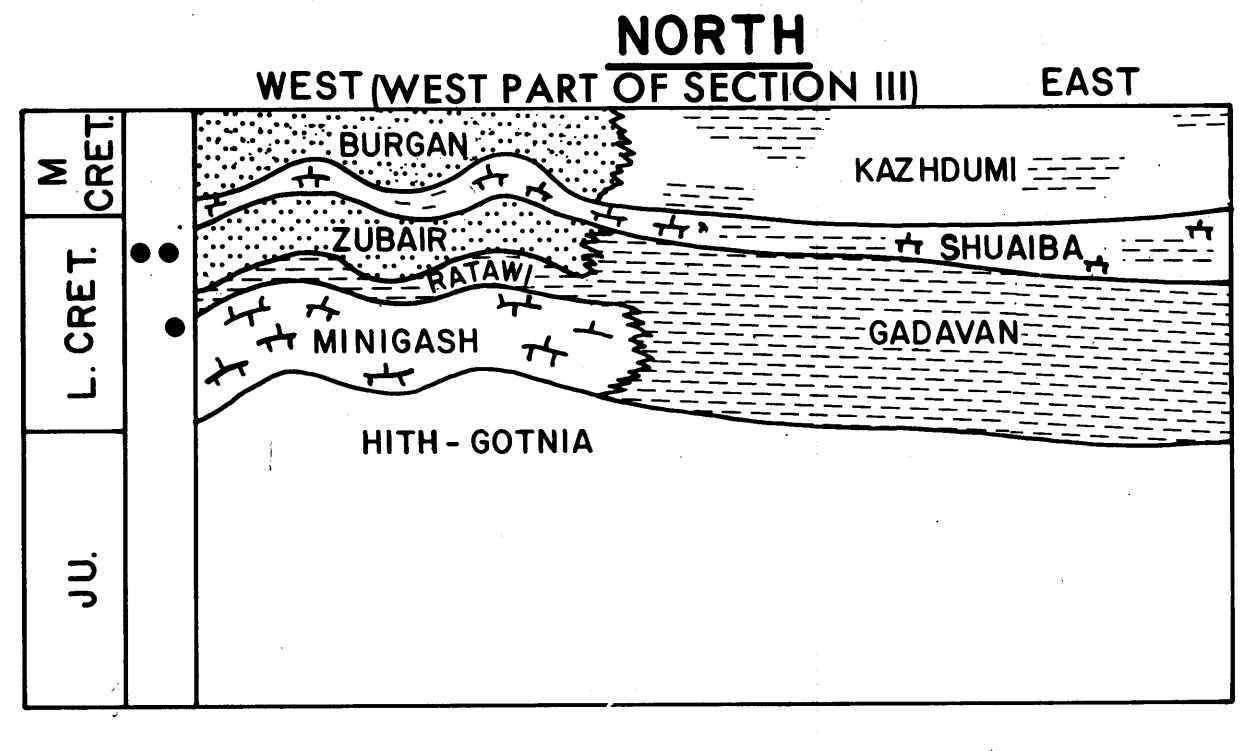
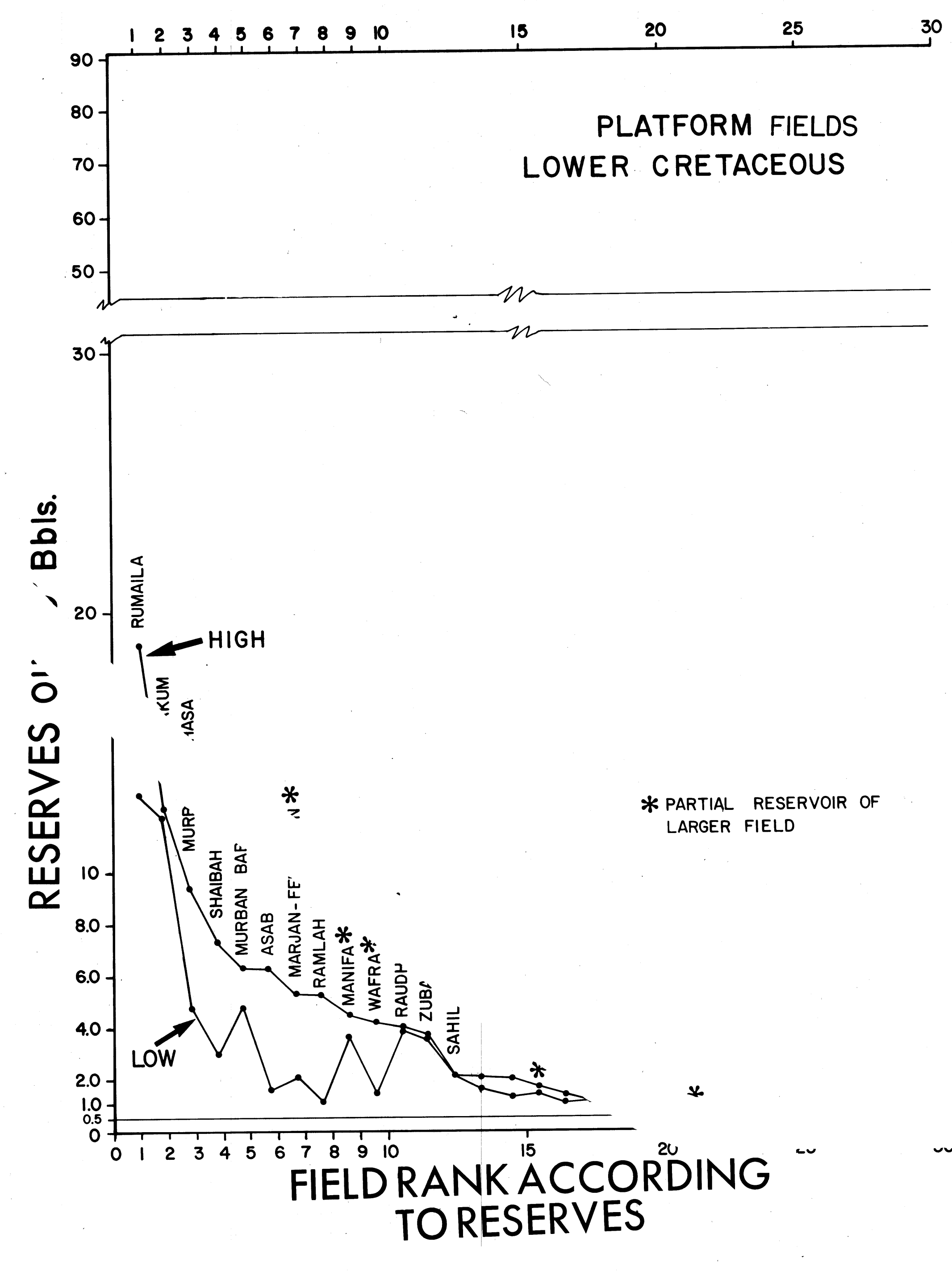


**LEGEND**

- LOWER CRETACEOUS PRINCIPAL RESERVOIR (OIL)
- LOWER CRETACEOUS PARTIAL RESERVOIR (OIL)
- LOWER CRETACEOUS PARTIAL RESERVOIR (GAS)
- SANDSTONE AREAS (DELTA)
- CARBONATE AREAS
- LOCAL REEFING AND FRACTURE POROSITY
- MATURE SOURCE ROCK



**LEGEND**

- RESERVOIR
- 187 MAJOR SHALE UNIT (SOURCE)
- 287 SOURCE WITHIN SHUAIBA (CLARK 1975)
- 387 JURASSIC LEAKAGE (KIMMERIDGIAN & VERTICAL MIGRATION THROUGH HITH - MURIS 1980 AND YOUNG 1977)
- 48 LOWER CRETACEOUS SOURCE AND LATERAL MIGRATION

**SUMMARY OF GEOLOGICAL AND PRODUCTION DATA FOR PLATFORM FIELDS (LOWER CRETACEOUS)**

RESERVOIRS	NORTH: VALANGINIANTO BARREMIAN, MINIGASH, YAMAMA, RATAMI (CARBONATES); ZUBAIR, (SANDS)	TIME OF TRAP FORMATION	LATE CRETACEOUS-EARLY TERTIARY
	SOUTH: THAMAMA, SHUAIBA (CARBONATES)	MECHANICS:	NORTH: FORELAND REACTION TO PLATE COLLISION FORMING "SALT ASSISTED" FOLD TRAPS. SOUTH: LOWER CRETACEOUS PLATFORM TO REEF TO FORE GROWTH WITH SALT FLOWAGE TRAPS.
RESERVES	70% CARBONATE - (REEF AND REEF DEBRIS RELATED P AND P)	MIGRATION	TIME: NORTH - MIDDLE TERTIARY TO RECENT SOUTH - EARLY TERTIARY TO RECENT
	30% SANDSTONE - (DELTAIC, ALLUVIAL, REGRESSIVE)		MODE: NORTH - LATERAL, UP DIP SOUTH - SEVERAL POSSIBILITIES (SEE BOX DIAGRAM)
RESERVES PRODUCED	10.0	EXPULSION EFFICIENCY	SOUTH: 1s 4% TO 6% 2s 10% TO 14% 3s ? NORTH: 5.6% TO 6%
PROVEN AND POSSIBLE, PROVEN AND PRODUCED (HIGH)	53.18 40.0* 99.87 60.0*		
RESOURCES SOURCE	ULTIMATE NORTH: RATAMI (GADAVAN) SHALE, SHUAIBA LIMESTONE - MARL - INTERBEDDED - LOWER CRETACEOUS SOUTH: 4 POSSIBLE SOURCES (SEE BOX-INSET) EITHER OVERLIE, INTERBED, OR LEAKAGE FROM BELOW, PERHAPS COMBINATION OF 2 OR MORE (REFERENCES - HASSA, 1975; MURIS, 1980; DUNNINGTON, 1967) - LOWER CRETACEOUS OR UPPER JURASSIC (SHALE) KAZHDUMI/NAHR UMR ALBIAN-AZTIAN		
CAP TIME OF MATURATION	EARLY TERTIARY		

This map was prepared under contract to the U.S. Geological Survey and has not been reviewed for conformity with USGS editorial standards and stratigraphic nomenclature. Opinions and conclusions expressed herein do not necessarily represent those of the USGS.

International boundary representation is not necessarily authoritative.

**PLATFORM LOWER CRETACEOUS RESERVOIR FIELDS**  
**OIL AND GAS MAPS AND SECTIONS OF THE ARABIAN - IRANIAN BASIN**  
By  
**H. Douglas Klemme**  
1984

(INFORMATION AS OF 1980)

