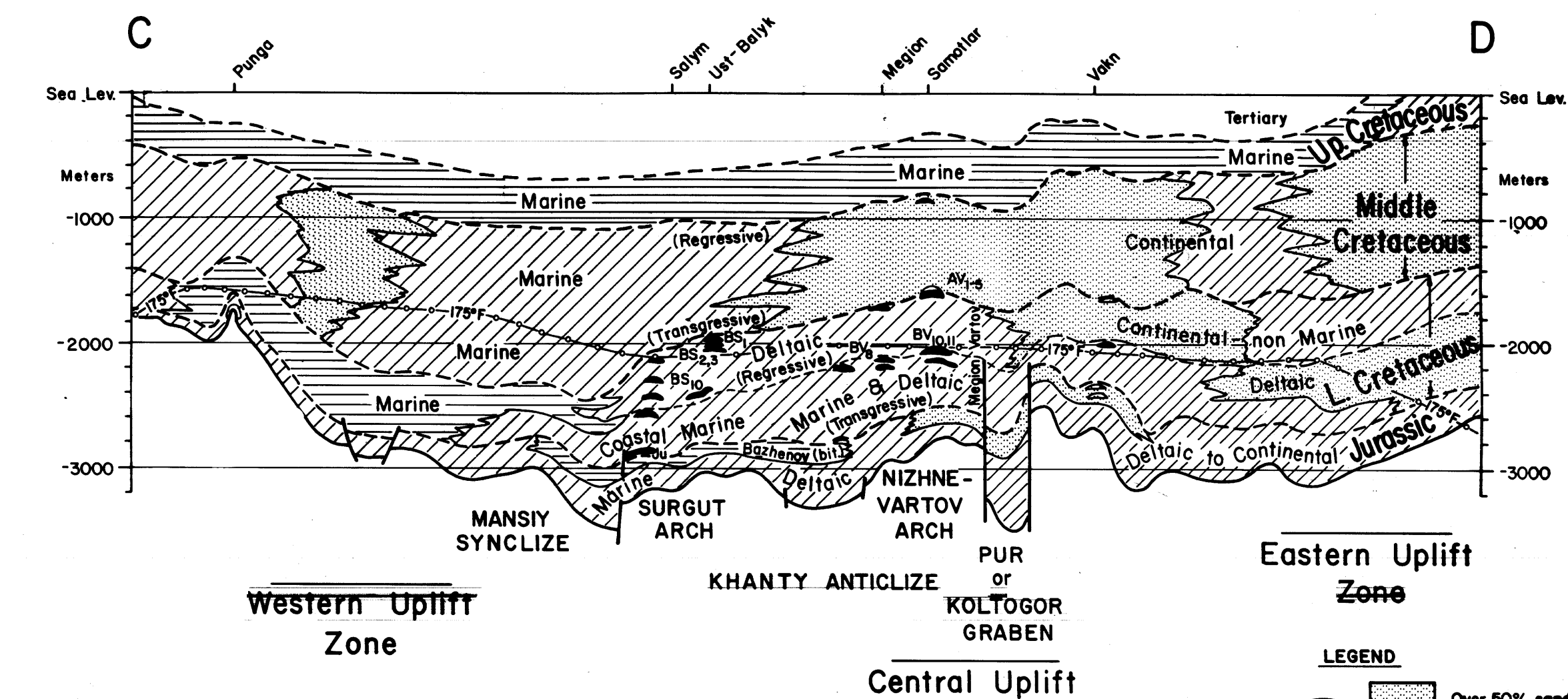
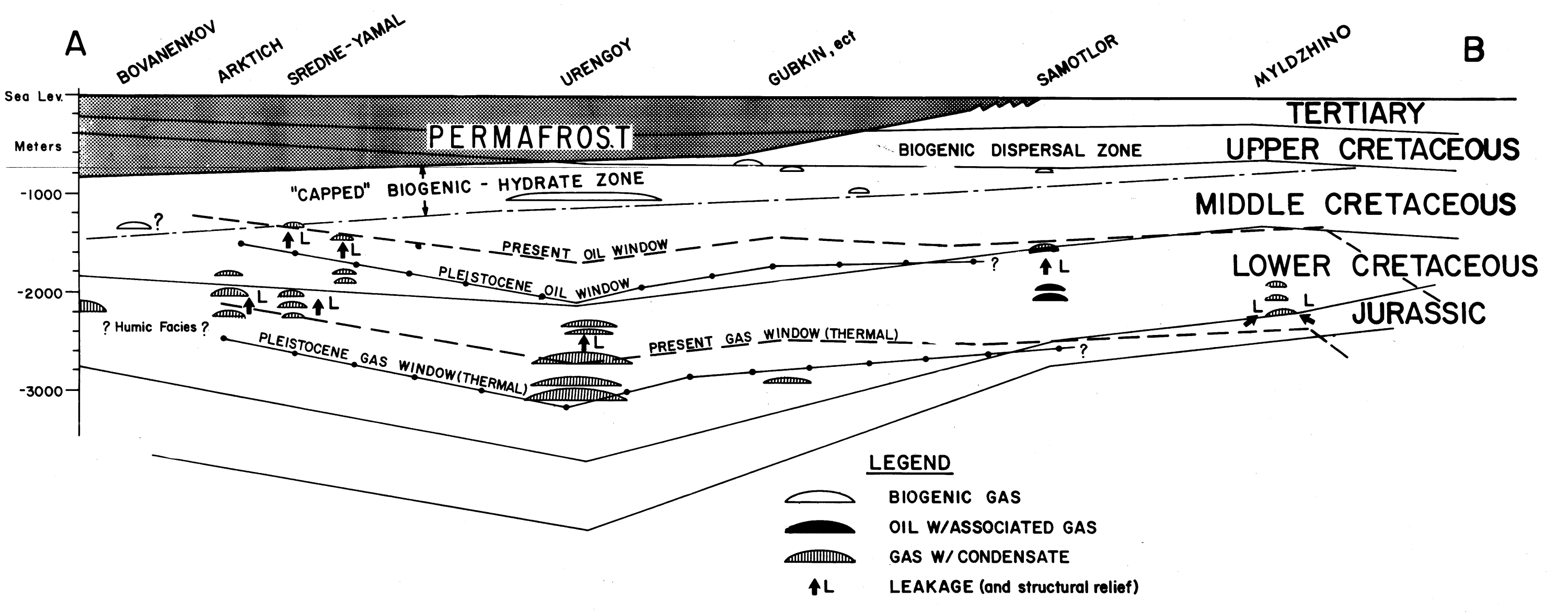
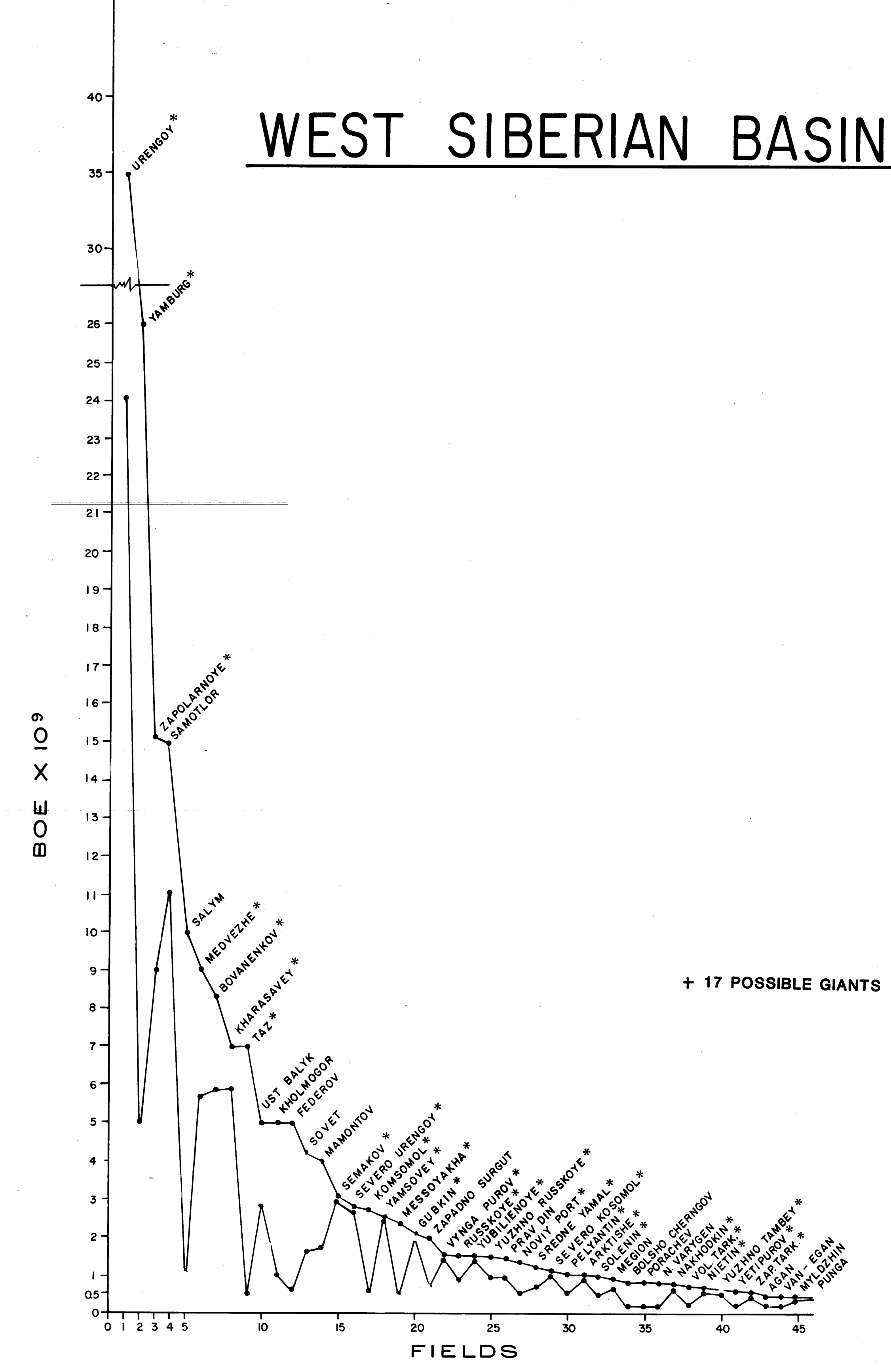


WEST SIBERIAN BASIN



LEGEND

- GIANTS**
 - GIANT FIELD
 - POSSIBLE GIANTS
- NON GIANTS**
 - OIL FIELD OR DISCOVERY
 - GAS FIELD OR DISCOVERY
 - MAPPED STRUCTURE
- POSSIBLE FACIES FAIRWAYS**
 - MIDDLE CRETACEOUS
 - LOWER CRETACEOUS (BLANKET) JURASSIC
 - STRATIGRAPHIC CONTROLLED TRAPS
- UPLIFT ZONE OR TREND**
 - KOLTGOR - PUR RIFTOR GRABEN
- GEOTHERMAL**
 - 1.9° - DEGREES F/100'
 - FROM MAKAVENKO DISTRIBUTION IN 11°
- STRUCTURAL AND DEPTH DEPENDENT**

LEGEND

- BIOGENIC GAS
- OIL W/ASSOCIATED GAS
- GAS W/CONDENSATE
- LEAKAGE (and structural relief)

LEGEND

- Over 50% sandstone
- 10% - 50% sandstone (with shale)
- Gas & condensate
- Boundary shale

LEGEND

- 0 50 100 150 200
- KILOMETERS

This map was prepared under U.S. Geological Survey authority.

RESOURCES AND PROSPECTS
OIL AND GAS MAPS AND SECTIONS OF THE WEST SIBERIAN BASIN

BY
H. DOUGLAS KLEMME
DATE: 1984 (information as of 1981)