

115° 35'  
38° 40'

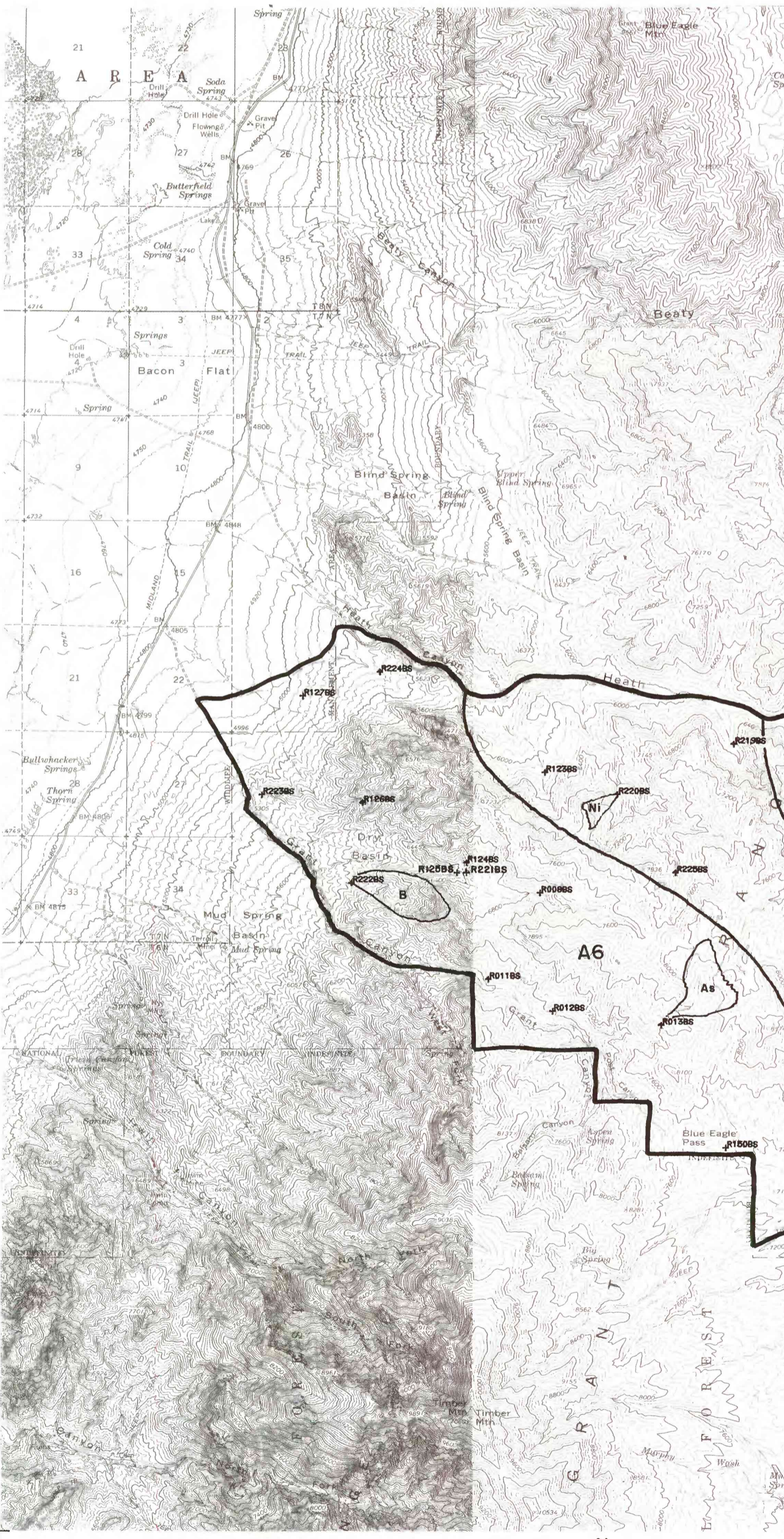
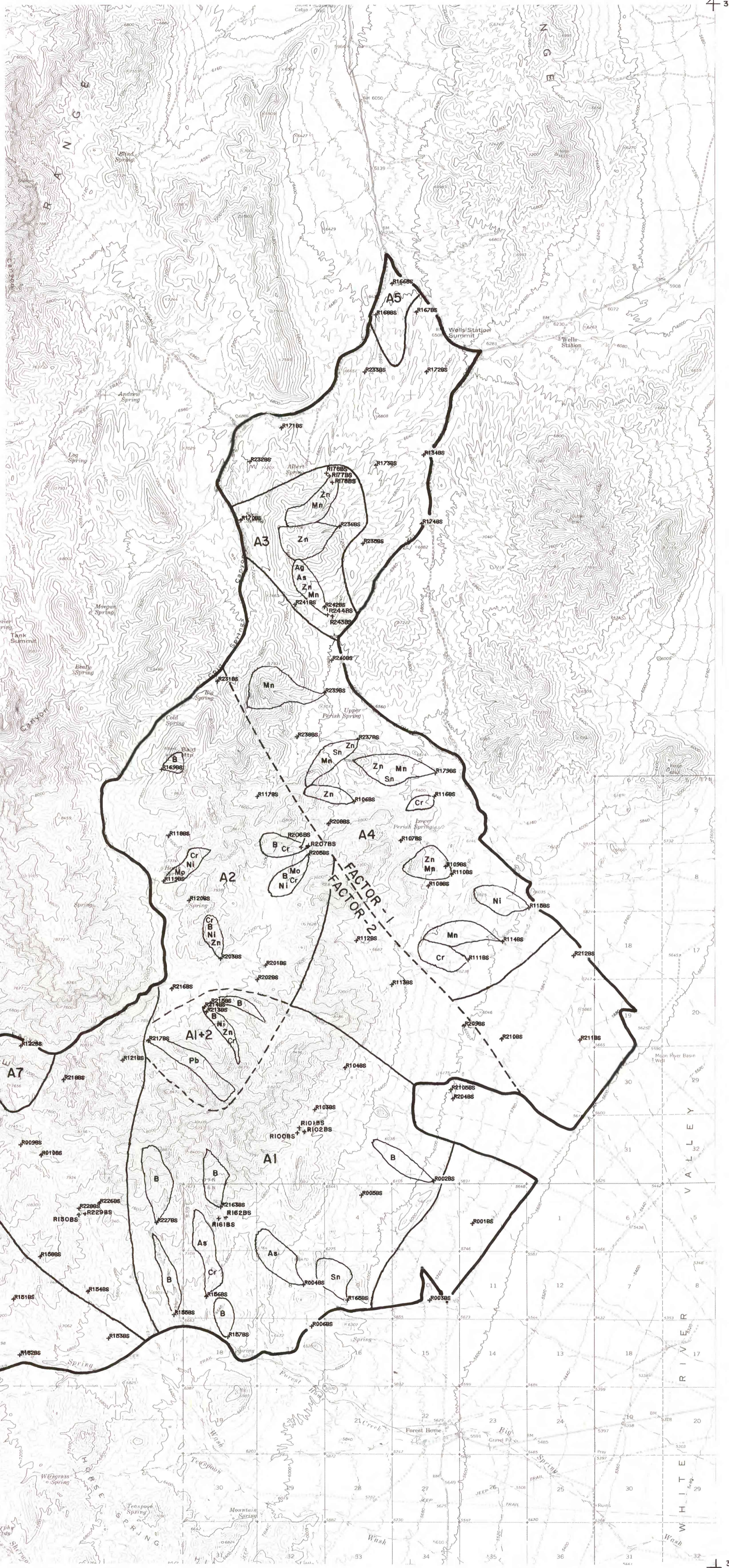
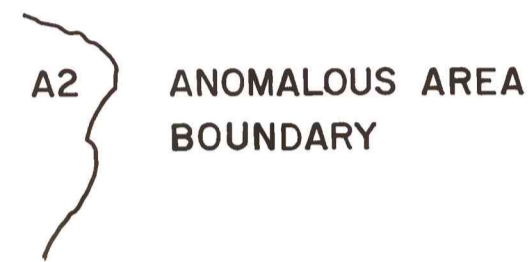
115° 15'  
38° 40'

**LEGEND**



**THRESHOLD VALUES (ppm)**

Ag	3
As	30
Pb	100
Zn	200
Cu	150
Mo	7
Sn	15
B	100
Ni	50
Cr	150
Mn	1500



38° 20'  
115° 35'

115° 15'  
38° 20'

Base from U. S. Geological Survey



0 5 1 2 3 4 5 miles

SCALE 1:62,500

This map is preliminary and has not been edited or reviewed for conformity with U.S. Geological Survey editorial standards

**PLATE 1—GEOCHEMICAL ANOMALIES FOR STREAM SEDIMENTS, RIORDAN'S WELL WSA (NV 040-166), NYE COUNTY, NEVADA**

By  
Albert H. Hofstra, E. Lanier Rowan and Gordon W. Day  
1984