

115° 35'  
38° 40'


115° 15'  
38° 40'

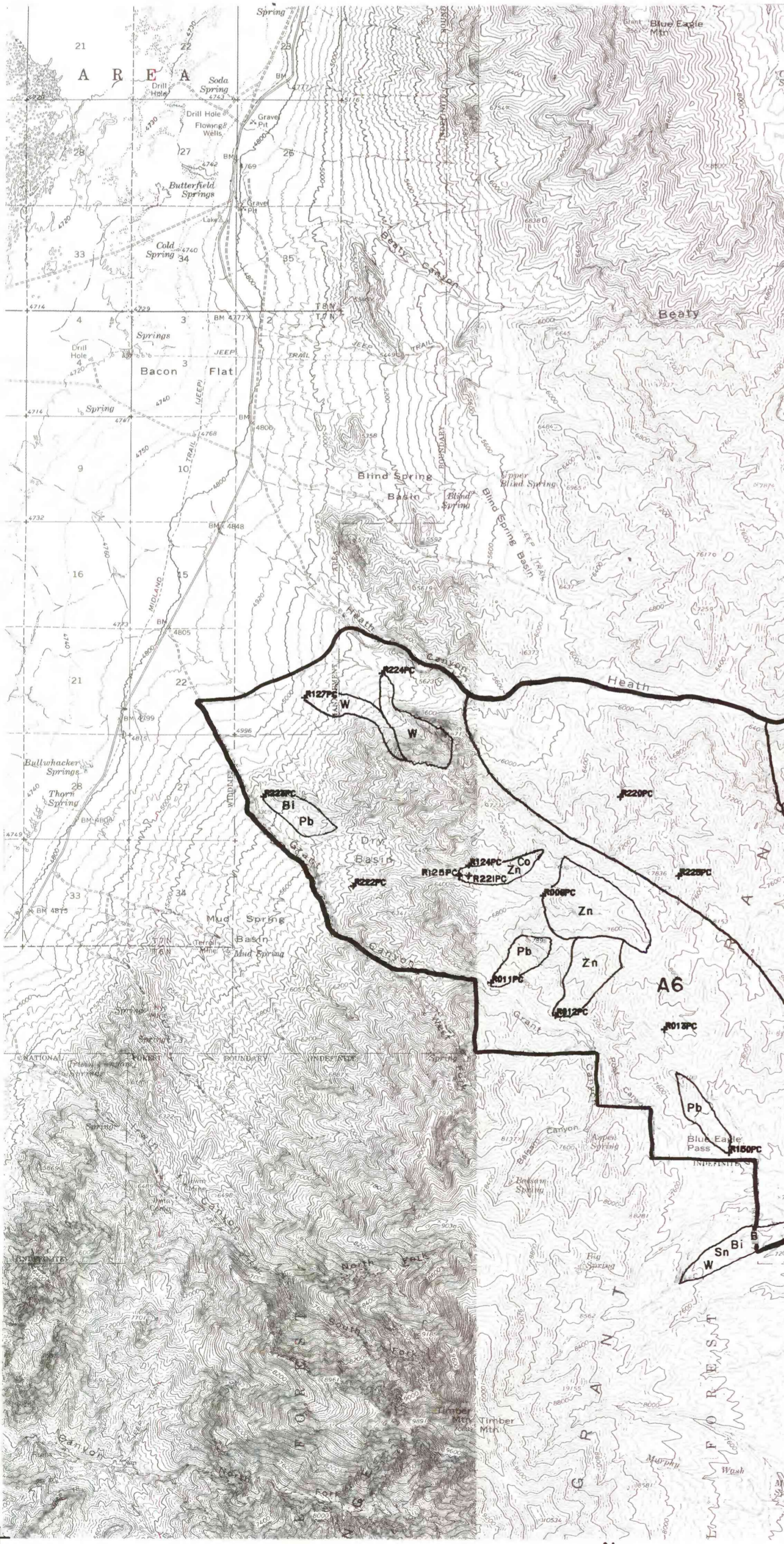
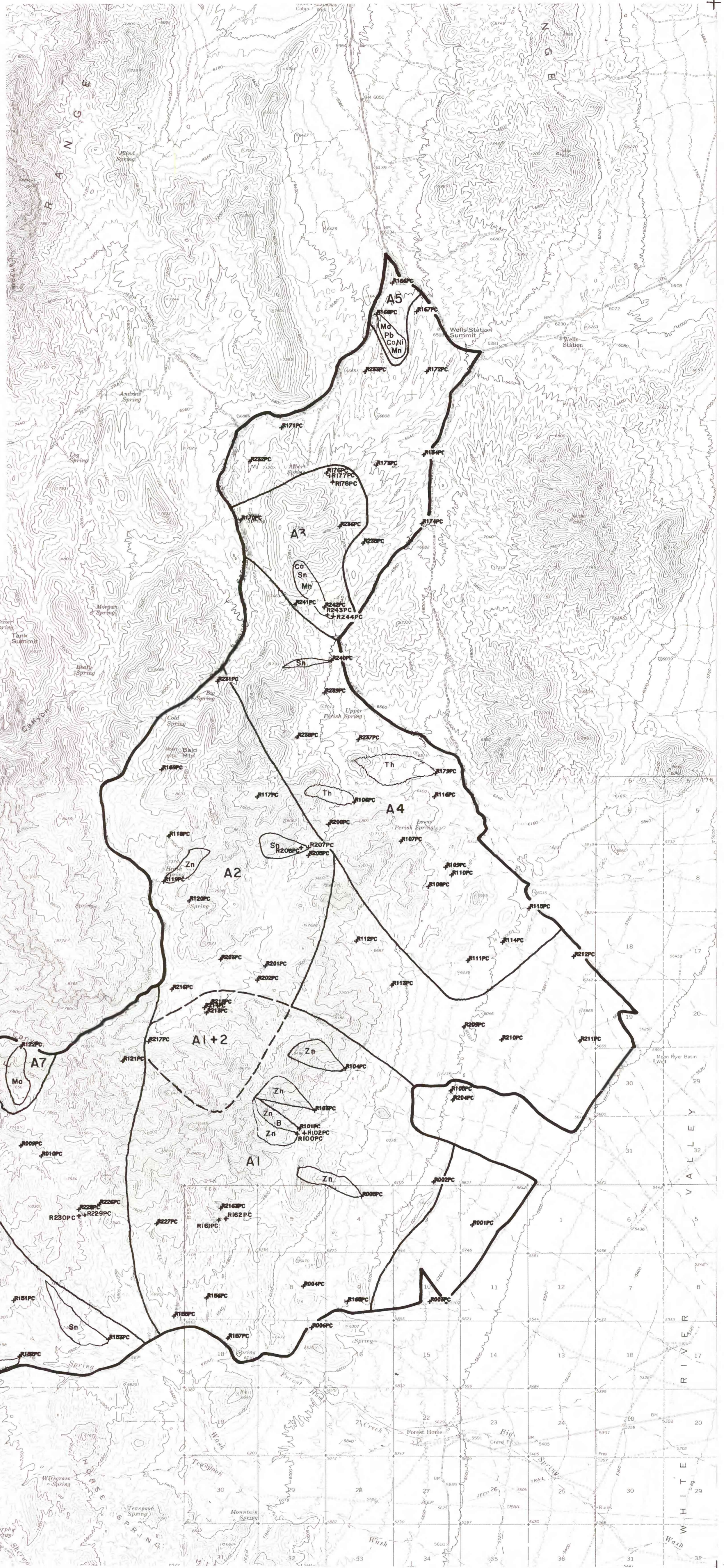
**LEGEND**

 **HEAVY MINERAL CONCENTRATE  
SAMPLE SITE SHOWING  
DRAINAGE BASIN AND  
ANOMALOUS ELEMENTS**

**THRESHOLD VALUES (ppm)**

Ag	1
As	500
Sb	200
B	200
Pb	300
Zn	500
Cu	100
Mo	10
Sn	20
Bi	20
Ni	100
Co	30
Mn	2000
Th	1000

 **ANOMALOUS AREA  
BOUNDARY**



38° 20' 115° 35'

38° 20' 115° 15'

Base from U. S. Geological Survey



0 5 1 2 3 4 5 miles  
SCALE 1:62,500

This map is preliminary and has not been edited or reviewed for conformity with U.S. Geological Survey editorial standards

**PLATE 2-GEOCHEMICAL ANOMALIES FOR HEAVY-MINERAL CONCENTRATES, RIORDAN'S WELL WSA (NV 040-166). NYE COUNTY, NEVADA**

By  
Albert H. Hofstra, E. Lanier Rowan and Gordon W. Day  
1984