

(200)
R290
no. 86, 253

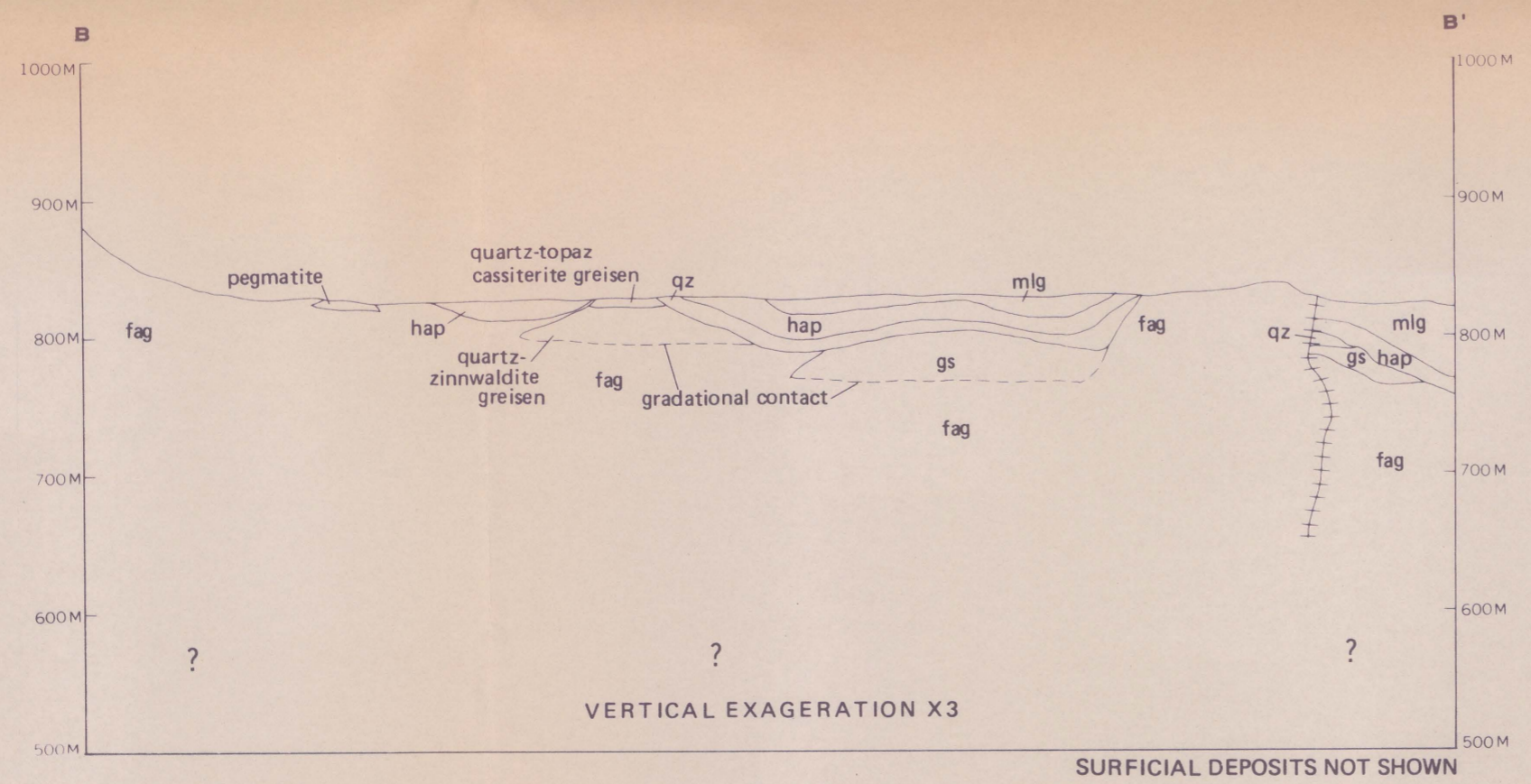
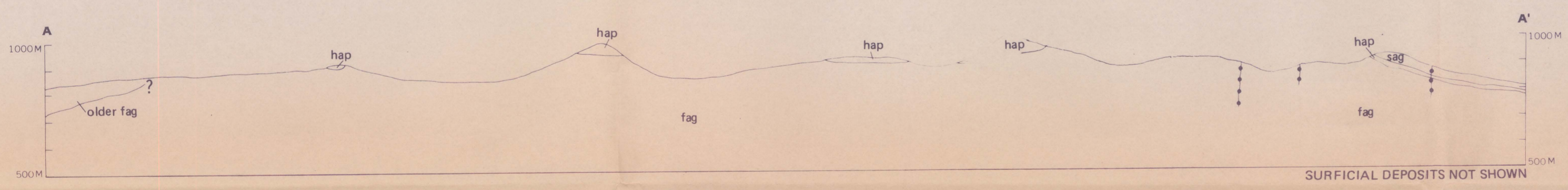
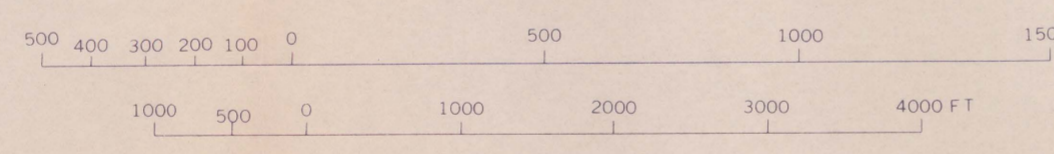
MINISTRY OF PETROLEUM AND MINERAL RESOURCES
DEPUTY MINISTRY FOR MINERAL RESOURCES



- EXPLANATION**
- Qs SURFICIAL DEPOSITS
 - UNCONFORMITY
 - QUARTZ VEIN
 - gs GREISEN
 - fag FAWWARAH ALKALI-FELDSPAR GRANITE
 - qz PEGMATITE QUARTZ
 - hap HADHIR APLITE
 - sag SILSILAH ALKALI-GRANITE -Com, Comendite; ++ comendite dike
 - oom
 - mlg MARAGHAN LITHIC GRAYWACKE
 - CONTACT
 - *832 SAMPLE LOCALITY SITE SHOWING NUMBER--All sample numbers should be prefixed by 181 to obtain complete designation
 - + DOME
- QUATERNARY
FELSIC DIKES
PRECAMBRIAN

This report has not been edited or reviewed for conformity with U.S. Geological Survey standards and nomenclature.

Geology mapped in 1983



GEOLOGIC MAP OF THE SOUTHWEST PART OF THE SILSILAH RING COMPLEX, KINGDOM OF SAUDI ARABIA

by
Edward A. du Bray
1985



IR697