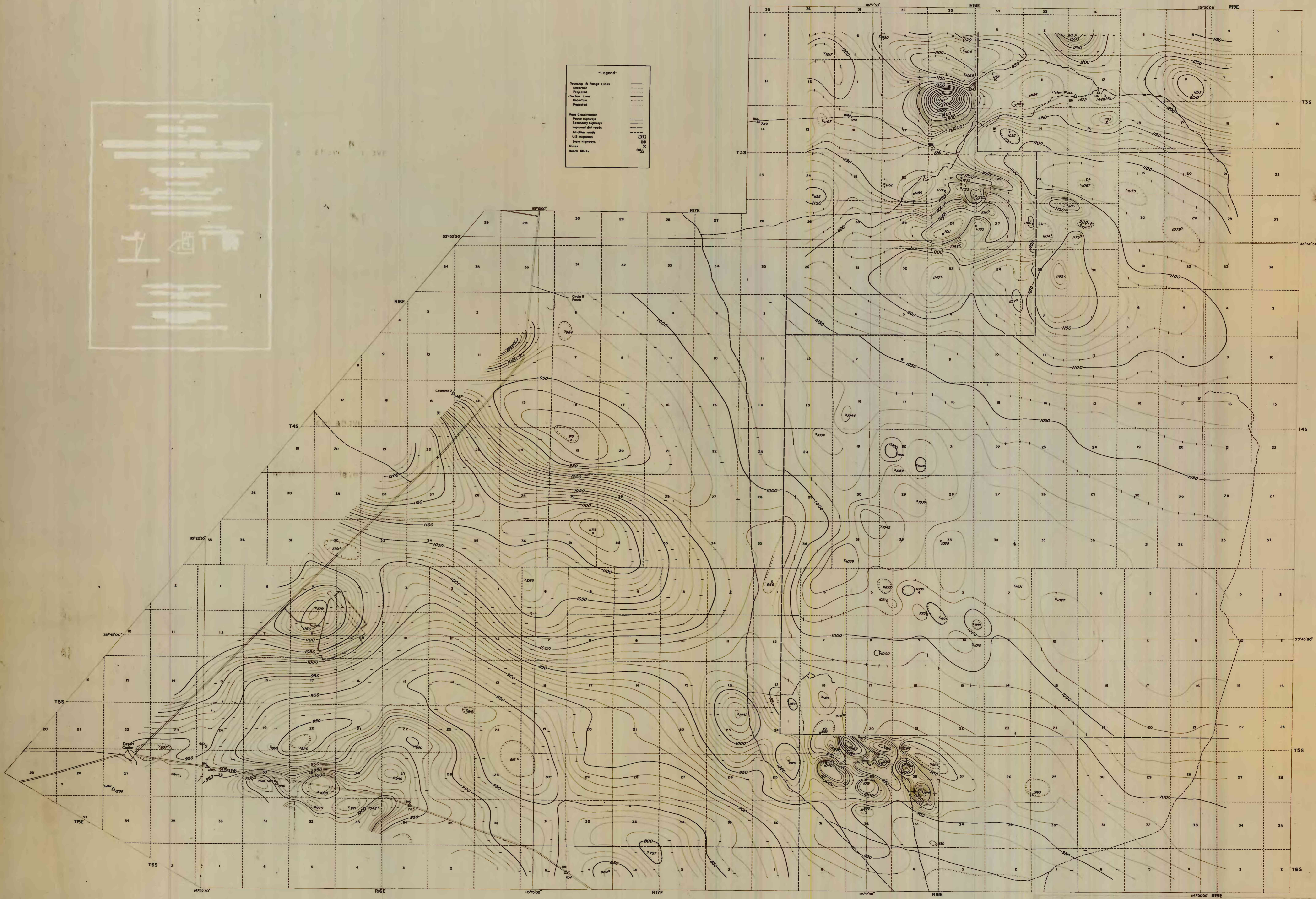


Legend

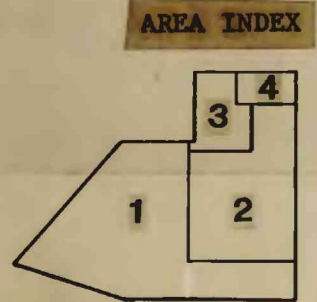
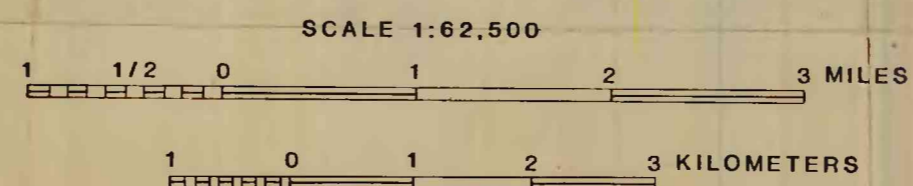
- Boundary & Range Lines
- Unsettled
- Proposed
- Section Lines
- Unsettled
- Proposed
- Road Classification
- Postal highways
- Secondary highways
- Improved dirt roads
- All other roads
- U.S. highways
- State highways
- Water
- Spot Marks



AEROMAGNETIC MAP OF THE PALEN AREA, RIVERSIDE COUNTY, CALIFORNIA

BY
U.S. GEOLOGICAL SURVEY

1985

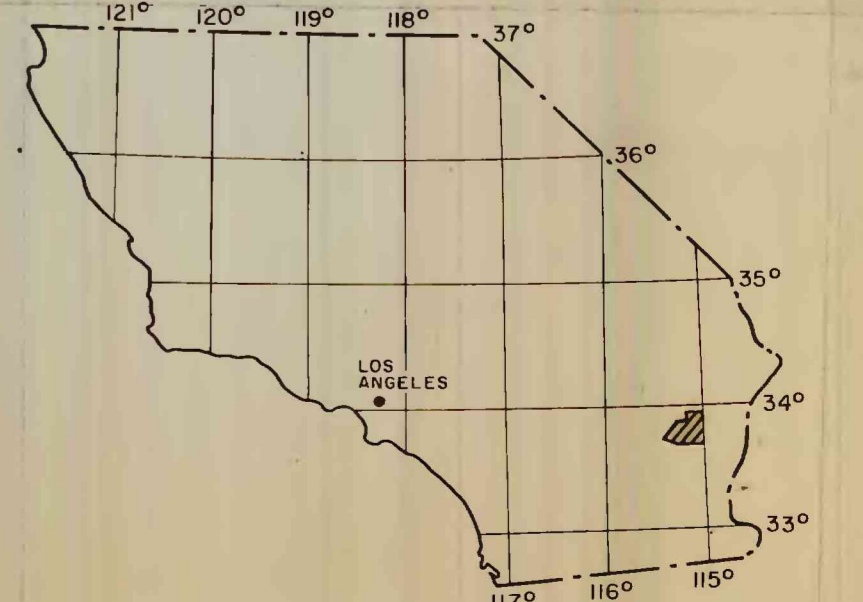


EXPLANATION

Contour interval.....10 gamma
 Base value.....50,000 gamma
 Flight line spacing.....Approx. 1/3 mile
 Flight line direction, Area 1.....E-W
 Flight line direction, Area 2, 3, 4.....N-S
 Flight altitude, Area 1....1200 ft. barometric
 Flight altitude, Area 2....3200 ft. barometric
 Flight altitude, Area 3....1800 ft. barometric
 Flight altitude, Area 4....2500 ft. barometric
 Instrumentation.....Varian magnetometer
 Date flown.....Sept.-Oct. 1955

Flown and compiled by:
Hycan Aerial Surveys, Inc. for
United States Steel Corporation

This map has not been reviewed for conformity with U.S. Geological Survey editorial standards. Opinions and conclusions expressed herein do not necessarily represent those of the USGS. Any use of trade names is for descriptive purposes only and does not imply endorsement by the USGS.



INDEX MAP OF SOUTHERN CALIFORNIA
showing location of this study area