

DATA COLLECTION FOR A TIME-OF-TRAVEL AND DISPERSION
STUDY ON THE COOSA RIVER NEAR CHILDERSBURG, ALABAMA

By Richard A. Gardner

U.S. GEOLOGICAL SURVEY

Open-File Report 85-411

Prepared in cooperation with the
ALABAMA DEPARTMENT OF ENVIRONMENTAL MANAGEMENT

Montgomery, Alabama

1985

UNITED STATES DEPARTMENT OF THE INTERIOR

DONALD PAUL HODEL, Secretary

GEOLOGICAL SURVEY

Dallas L. Peck, Director

For additional information write to:

District Chief
U.S. Geological Survey
520 19th Avenue
Tuscaloosa, Alabama 35401

Copies of this report can be
purchased from:

Open-File Services Section
U.S. Geological Survey
Box 25425, Federal Center
Denver, Colorado 80225

CONTENTS

	Page
Abstract	1
Introduction.....	1
Dye injection.....	3
Dye sampling.....	4
Sample processing.....	6
Movement of the dye cloud.....	7
Summary.....	13
Selected references.....	14
Appendix.....	15

ILLUSTRATIONS

Figure 1. Map showing the location of the study area and the sampling cross sections.....	2
2. Graph of dye cloud at sampling cross section 10.....	8
3. Graph of dye cloud at sampling cross section 15.....	9
4. Graph of dye cloud at sampling cross section 27.....	10
5. Graph of dye cloud at sampling cross section 43.....	11

TABLE

Table 1. Location of sampling cross sections.....	5
---	---

FACTORS FOR CONVERTING INCH-POUND UNITS TO METRIC UNITS

The analyses and compilations used in this report were made in inch-pound units of measurements. Conversion factors for inch-pound units and metric units are listed below. Multiply inch-pound units by the conversion factor to obtain metric units.

Conversion Factors

<u>Inch-pound units</u>	<u>Conversion factor</u>	<u>Metric units</u>
cubic feet per second	0.02832	cubic feet per second
feet per mile	0.1894	meters per kilometer
gallons per minute	0.06309	liters per second
miles	1.609	kilometers
pounds	0.4536	kilograms
square miles	2.59	square kilometers

DATA COLLECTION FOR A TIME-OF-TRAVEL AND DISPERSION STUDY
ON THE COOSA RIVER NEAR CHILDERSBURG, ALABAMA

By Richard A. Gardner

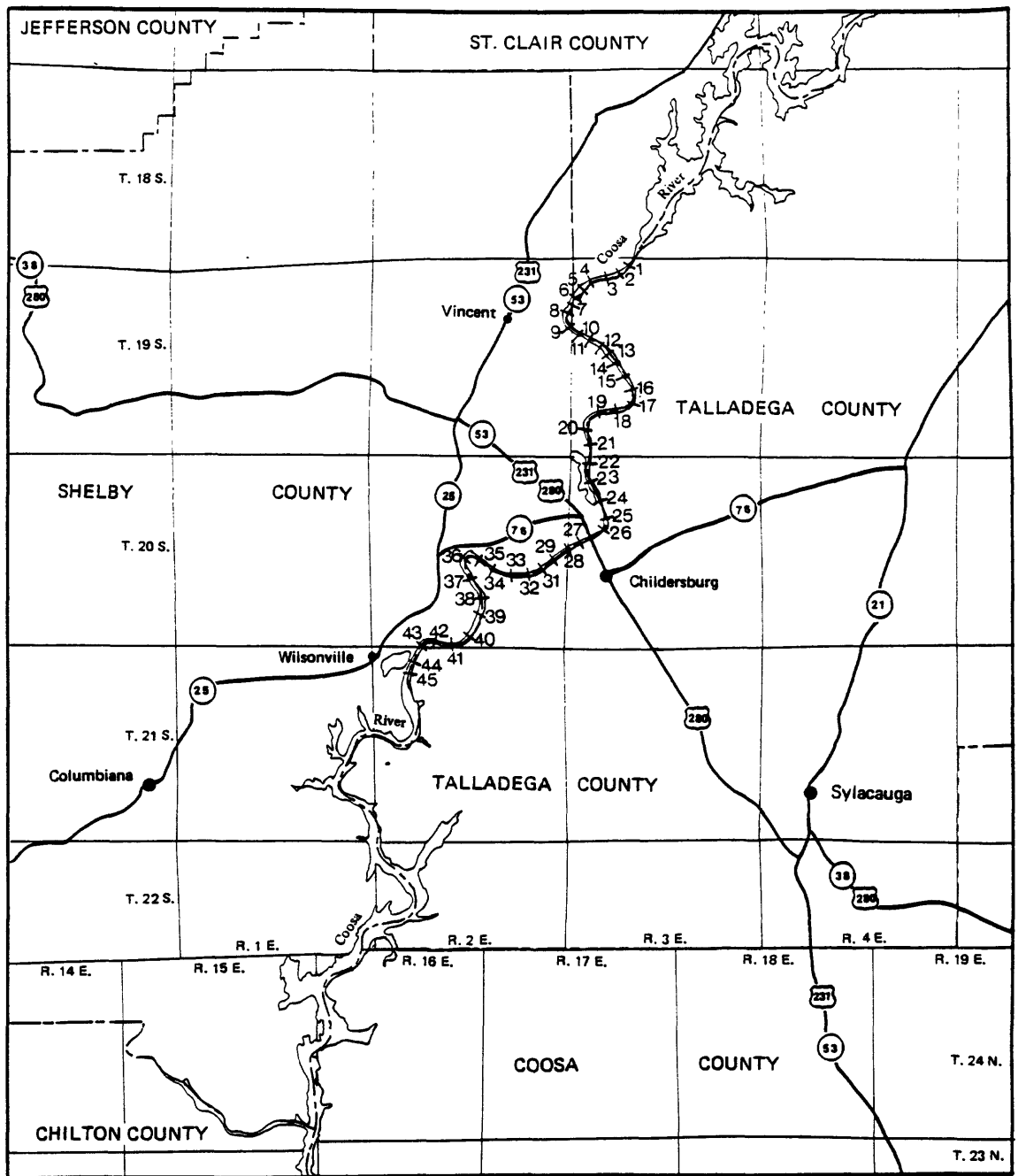
ABSTRACT

Approximately 2,300 dye-tracer samples were collected and analyzed during a five-day time-of-travel study on a 23-mile reach of the Coosa River between Logan Martin and Lay dams near Childersburg, Alabama, October 27 to 31, 1984. Rhodamine WT was used as the tracer-dye. Unsteady flow conditions prevailed in the study reach. The rate of movement of the dye cloud between sampling cross sections ranged from 0.15 to 1.36 feet per second. The average rate of movement of the dye cloud between the injection cross section and the downstream sampling cross section was 0.42 foot per second.

INTRODUCTION

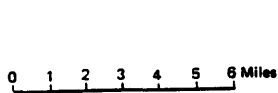
This report describes the data collection phase of a study of the movement of a solute in the Coosa River near Childersburg, Alabama (fig. 1). This study was conducted in cooperation with the Alabama Department of Environmental Management. The study reach is between Logan Martin dam and Wilsonville, Alabama. This reach of the Coosa River is 23 miles long and is in the pool created by Lay dam. The solute used as a tracer for this study was 70 pounds of rhodamine WT dye.

The objective of the study was to simulate the movement of a solute through the 23-mile reach. The information obtained from this study can be used to determine the travel time and pattern of change in concentration of other solutes introduced into the reach at various locations.



Base map modified from U.S.G.S. 1:250,000

EXPLANATION



36

 Sampling cross section and number

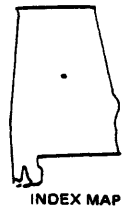


Figure 1. Location of study area and sampling cross sections.

DYE INJECTION

The rhodamine WT was mixed with water to provide 360 gallons of a dilute injection solution. The rhodamine WT solution was injected on October 27, 1954, into the Coosa River 0.25 mile downstream of Logan Martin dam. The solution was injected through three orifices, located at the quarter-points of flow in the injection cross section, in order to minimize the length of the mixing reach.

The dilute rhodamine WT was pumped to the three injection points in the cross section at a constant rate of 0.73 gallon per minute. The injection equipment was adjusted so that the rhodamine WT was delivered at an equal rate to each of the three injection points in the injection cross section. Injection of the rhodamine WT began at 0810 hours and ended at 1625 hours on October 27, 1984. The centroid of the rhodamine WT cloud at the injection cross section occurred at 1217 hours, October 27, 1984.

DYE SAMPLING

Forty-five sampling cross sections were established at approximately one-half mile intervals along the 23-mile study reach before the rhodamine WT was injected (table 1 and fig. 1). The top widths of the cross sections were measured instrumentally and the depths of water were measured with recording fathometers. One or more samples were collected at each of these cross sections. Approximately 2,300 samples were collected at these cross sections during the study.

Three sampling procedures were used to monitor and sample the rhodamine WT cloud as it moved downstream. First, grab samples were collected periodically at mid-channel to determine the location of the rhodamine WT cloud and its longitudinal profile. These samples were collected at approximately 1-mile intervals along the reach at the sampling cross sections established for this study.

Three automatic samplers were used to sample the main body of the rhodamine WT cloud at selected sampling cross sections in the reach. Nominal sample intervals ranging from 6 to 120 minutes can be obtained with the samplers used in this study. The actual sampling intervals were determined by observing the operation of the samplers. The nominal sampling interval used for most of this study was 14 minutes. Shorter sampling intervals were used at some cross sections in the early part of the study. The cross sections occupied by the automatic samplers were selected based on analyses of samples collected to determine the longitudinal profile of the rhodamine WT cloud.

Table 1. Location of sampling cross sections in miles downstream of Logan Martin dam near Childersburg, Alabama

Cross section number	Miles downstream	Cross section number	Miles downstream	Cross section number	Miles downstream
1	0.55	16	7.00	31	14.80
2	1.05	17	7.50	32	15.40
3	1.90	18	7.90	33	16.00
4	2.35	19	8.55	34	16.50
5	2.50	20	9.25	35	17.20
6	2.75	21	9.90	36	17.80
7	3.10	22	10.30	37	18.40
8	3.55	23	10.85	38	19.10
9	4.00	24	11.50	39	19.80
10	4.50	25	12.05	40	20.30
11	5.00	26	12.40	41	20.80
12	5.40	27	13.05	42	21.30
13					
13	5.55	28	13.50	43	21.90
14	5.95	29	13.90	44	22.40
15	6.50	30	14.30	45	22.90

The rhodamine WT cloud was sampled upstream of the automatic samplers at the quarter-points of the channel in order to define the cloud's tail. This sampling was usually started before the arrival of the rhodamine WT cloud and continued until the concentration of the rhodamine WT in the cross section occupied by the automatic samplers had declined to background levels. Grab samples were collected at these sampling points at approximately one-hour intervals.

SAMPLE PROCESSING

The large number of samples collected, and the need for immediate analysis so that subsequent sampling could be scheduled, dictated that a laboratory be located in or near the study area. Therefore, a mobile field laboratory was located near the injection cross section. This laboratory was equipped with a Turner Model 111 filter type fluorometer and the necessary accessory equipment to process the samples using standard fluorometric techniques. Dye standards were prepared from a 3-liter sample of the diluted solution of the rhodamine WT.

As the analyses were performed the data were stored permanently on magnetic media with a microcomputer. The file data for each sample include the cross section location, the location of the sampling point in the cross section, the date of collection, the time of collection, the flurometer scale settings used for the analysis of the sample and the results of the analysis. Approximately 2,300 samples were analyzed and the results stored with an average turnaround time of less than three minutes.

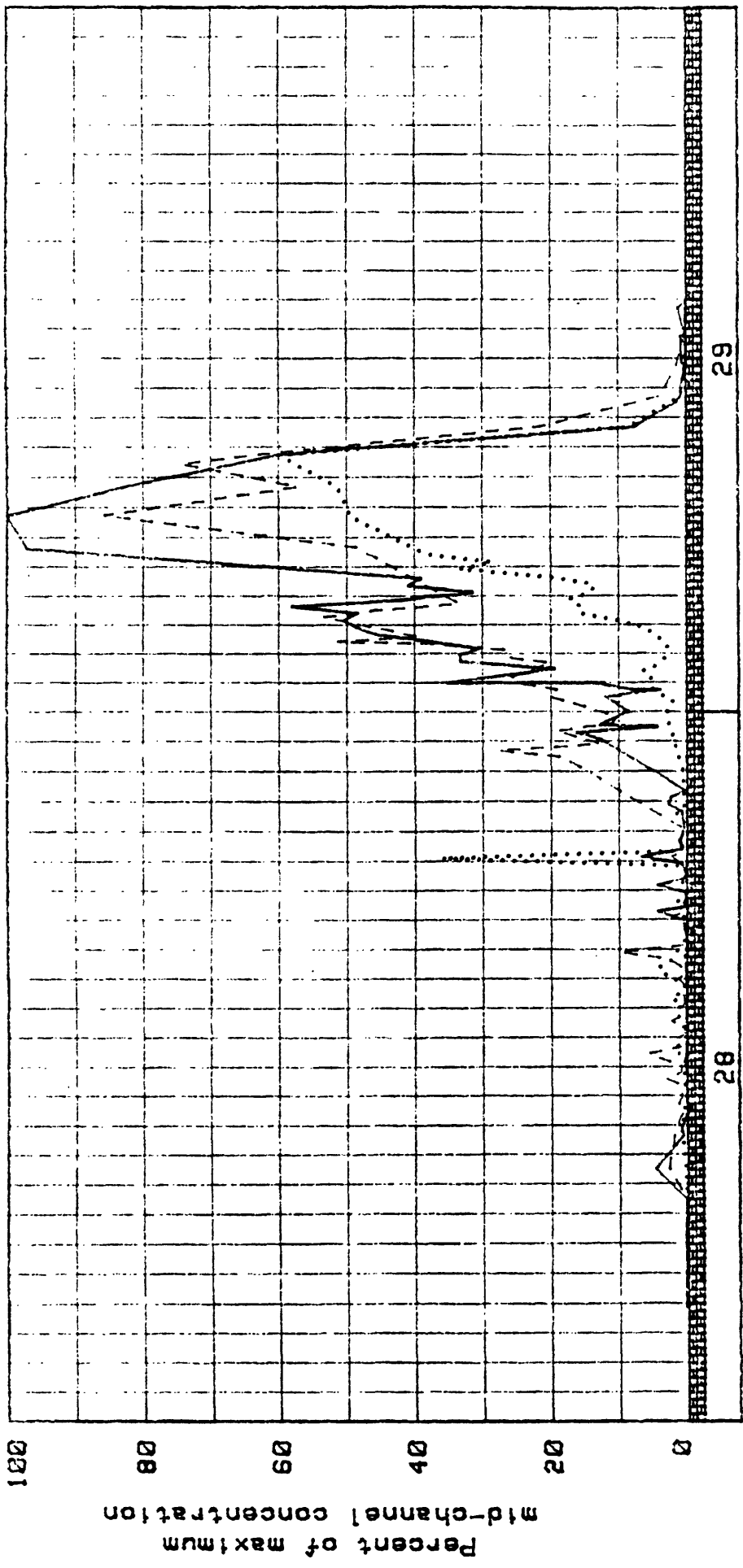
MOVEMENT OF THE DYE CLOUD

Water samples for tracer-dye analyses were collected at each of the 45 sampling cross sections established in the study reach. The analyses can be used to determine the progress of the tracer-dye as it moves down the reach. Figures 2-5 show the passage of the dye cloud, as defined by increases and decreases in the percent of maximum dye concentration, in selected cross in the study reach.

On October 27 and 28 there was no discharge through the turbines at either Logan Martin or Lay dam. There was discharge through the turbines at both these dams for part of the day, each day, October 29-31.

Figure 2 shows the passage of the rhodamine WT cloud at sampling cross section 10, 4.5 miles downstream of Logan Martin dam. The rhodamine WT arrived at this cross section between 0700 and 0800 hours on October 28 almost 24 hours after the start of the rhodamine WT injection. Rhodamine WT concentrations remained low at this cross section until about 1830 hours on October 28. A slow, erratic increase in the concentration of rhodamine WT began at that time. The rhodamine WT concentrations at the right and mid-channel sampling points in this cross section reached their maximum values about 0700 hours October 29. The maximum rhodamine WT concentration at the left sampling point in this cross section occurred about two hours later.

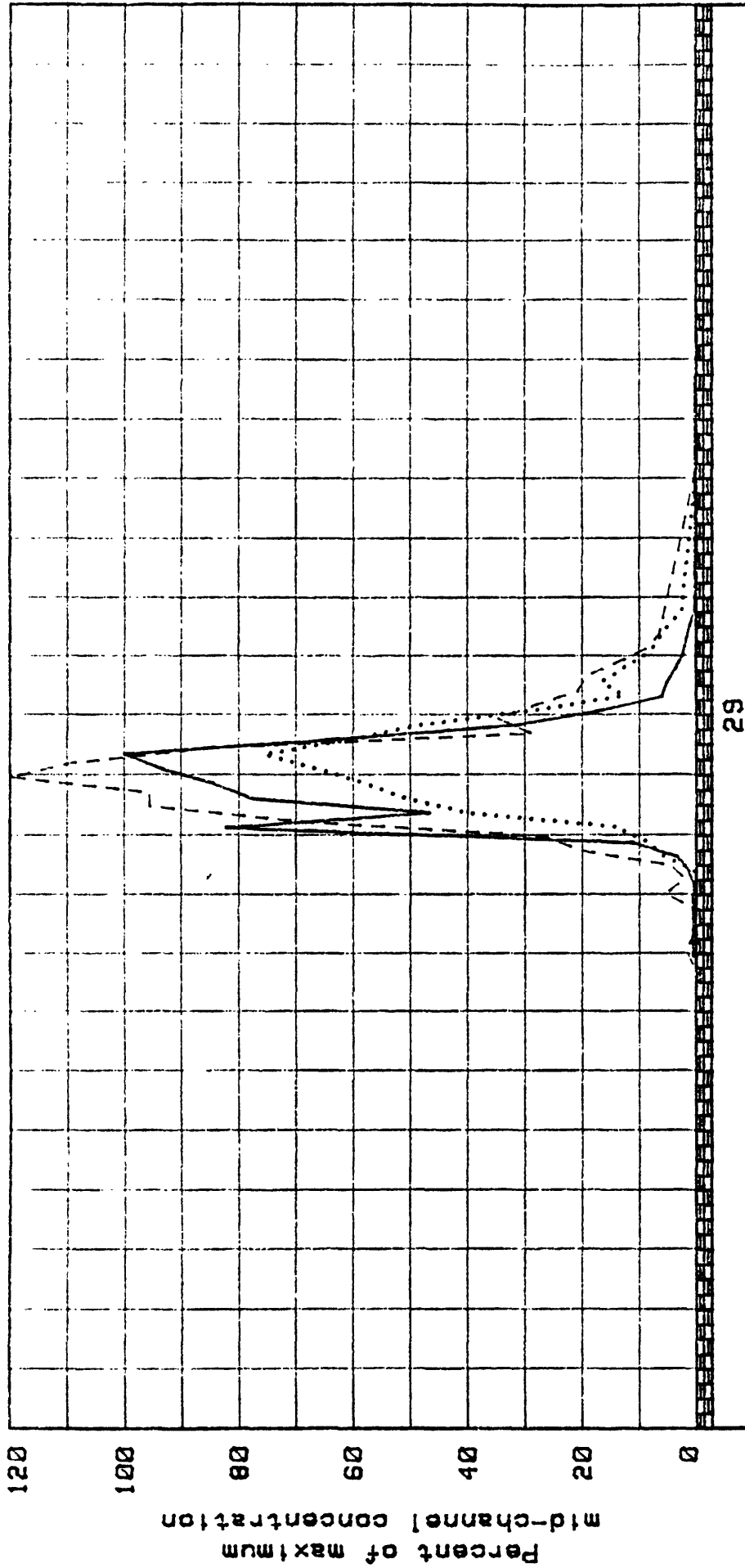
Maximum rhodamine WT concentrations occurred at sampling cross section 15, 6.5 miles downstream of Logan Martin dam, before noon on October 29 (fig. 3) and around 1800 hours the same day at cross section 27, 13.05 miles downstream of Logan Martin dam. The rhodamine WT cloud passing these cross sections is much less dispersed than the cloud passing sampling cross section 10.



October 1984

- Profile of dye cloud at left quarter-point of channel
- Profile of dye cloud at mid-channel
- Profile of dye cloud at right quarter-point of channel

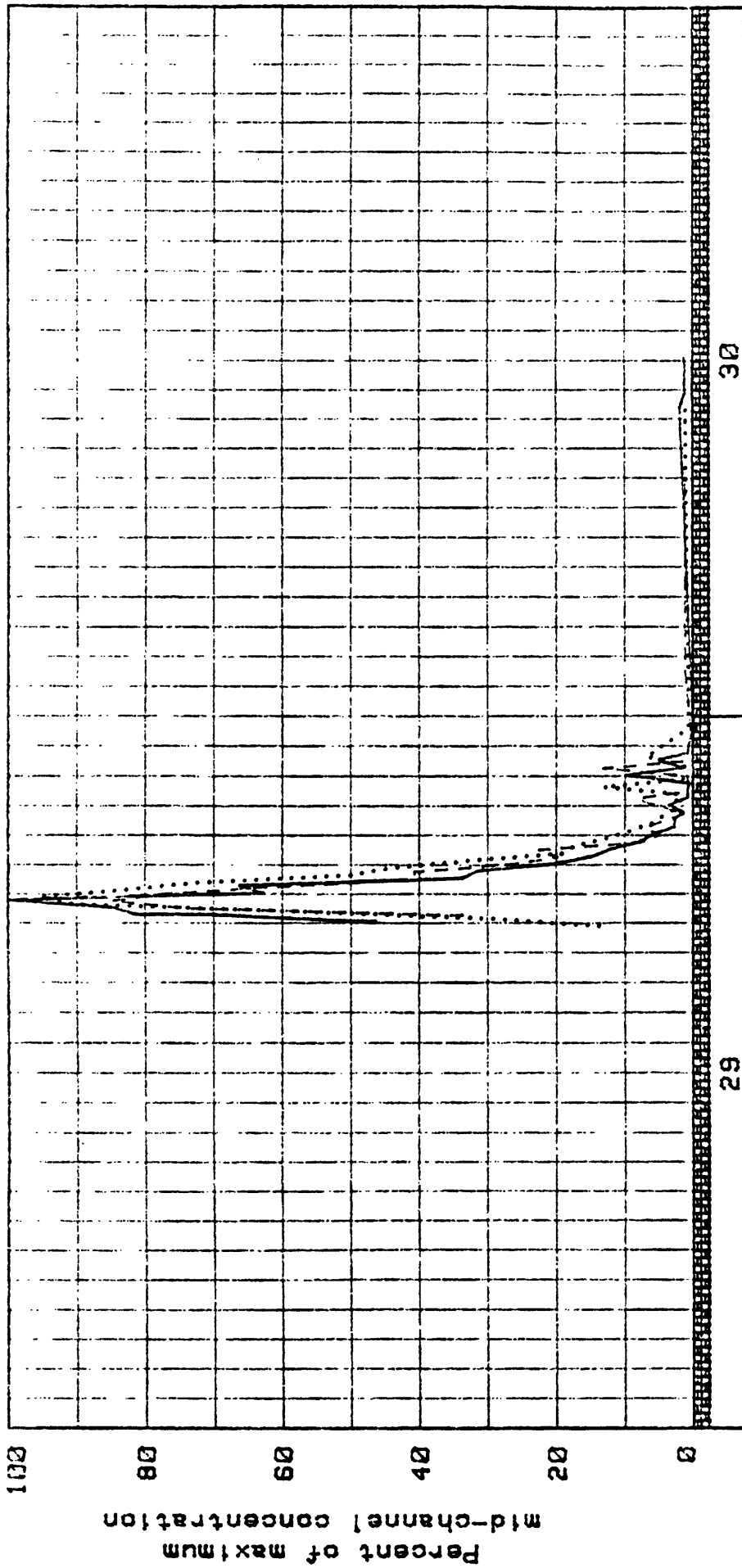
Figure 2. Graph of dye cloud at sampling cross section 10.



October 1984

- Profile of dye cloud at left quarter-point of channel
- Profile of dye cloud at mid-channel
- Profile of dye cloud at right quarter-point of channel

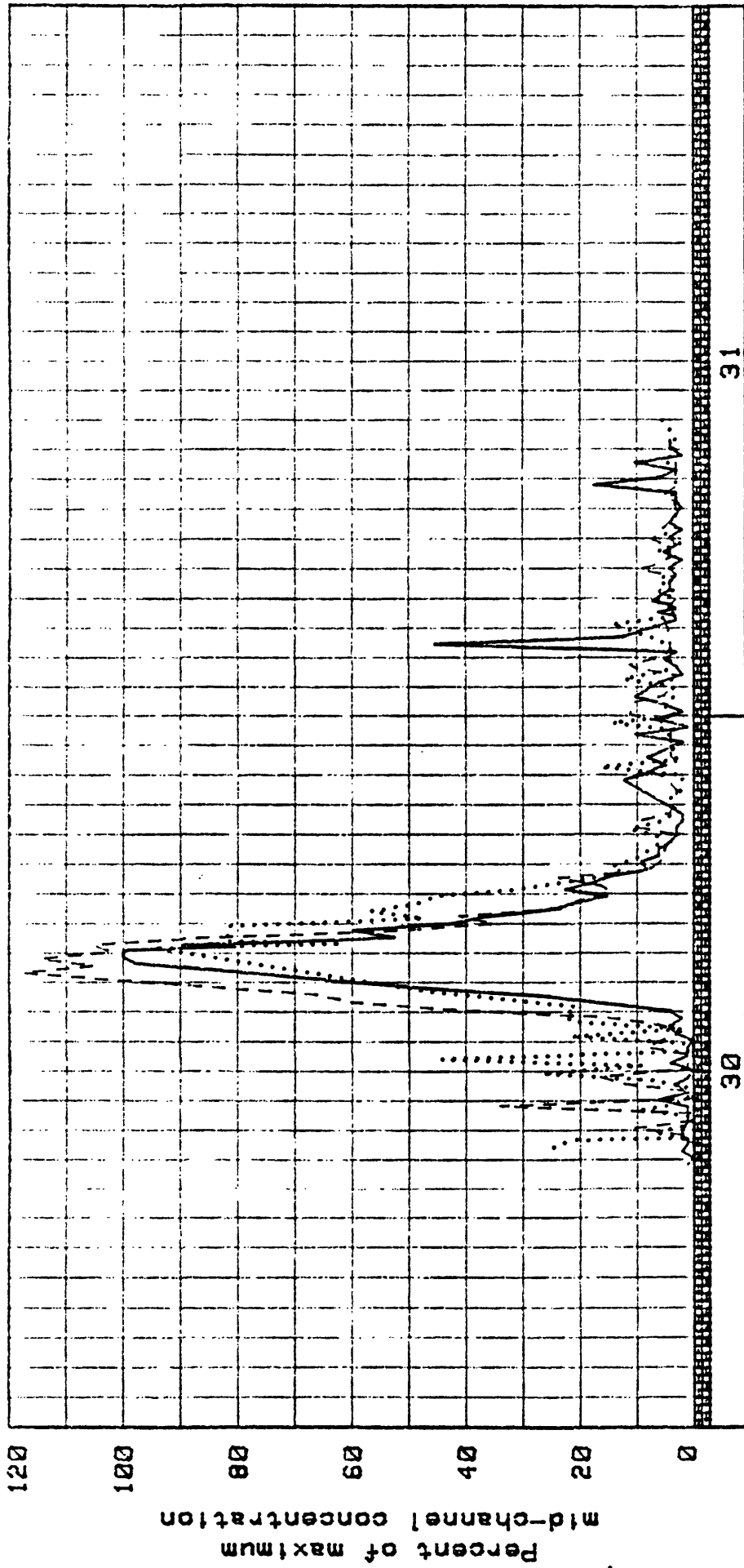
Figure 3. Graph of dye cloud at sampling cross section 15.



October 1984

- Profile of dye cloud at left quarter-point of channel
- Profile of dye cloud at mid-channel
- Profile of dye cloud at right quarter-point of channel

Figure 4. Graph of dye cloud at sampling cross section 27.



October 1984

- Profile of dye cloud at left quarter-point of channel
- Profile of dye cloud at mid-channel
- Profile of dye cloud at right quarter-point of channel

Figure 5. Graph of dye cloud at sampling cross section 43.

Detectable concentrations of the rhodamine WT were first observed at sampling cross section 43, 21.9 miles downstream of Logan Martin dam (at Wilsonville, Alabama) between 0800 and 0930 hours on October 30, 1984. The rhodamine WT cloud appeared to be more dispersed as it passed this cross section than at cross sections 15 and 27. Rhodamine WT concentrations 5 to 10 percent of the maximum concentrations observed at this cross section persisted in the cross section until sampling ceased between 1000 and 1100 hours October 31.

The variability in the rate of movement of the rhodamine WT and the variability in the length of time required for the rhodamine WT cloud to pass individual sampling cross sections in the reach can be attributed to the unsteady nature of flow in the reach. The average rate of movement of the rhodamine WT cloud between these sampling cross sections ranged from 0.15 to 1.36 feet per second and averaged 0.42 foot per second between the injection cross section and sampling cross section 43.

SUMMARY

In order to collect the samples necessary to provide the data for the computation of travel times, dispersion coefficients, and related flow characteristics it was necessary to know the location of the rhodamine WT cloud at all times during the study. Unsteady flow conditions in the study reach made it difficult to predict the rate of movement of the rhodamine WT cloud and consequently its location in the reach. This combination of factors made it necessary to collect and quickly analyze a large number of samples.

The time between sample collection and sample analysis was minimized by automating the sample processing routine as much as was practical. Automatic samplers were used where possible. More than half the samples analyzed were collected with these samplers. The field laboratory was equipped with a microcomputer to minimize the time required to log samples in and to record the results of the sample analyses. Approximately 2,300 samples were analyzed, and the results of the analyses reported and stored in files with a turnaround time averaging less than three minutes per sample.

SELECTED REFERENCES

- Hubbard, E. F., Kilpatrick, F. A., Martens, L. A., and Wilson, J. F., Jr., 1982, Measurement of time of travel and dispersion in streams by dye tracing: U.S. Geological Survey Techniques of Water-Resources Investigations, Book 3, Chapter A9, 44 p.
- Kilpatrick, F. A., and Cobb, E. D., 1984, Measurement of discharge using tracers: U.S. Geological Survey Open-File Report 84-136, 74 p.
- Wilson, J. F., Jr., Cobb, E. D., and Kilpatrick F., A., 1984, Fluorometric procedures for dye tracing: U.S. Geological Survey Open-File Report 84-234, 53 p.

APPENDIX

Sample number	Miles down-stream	Percent of width	Date Day Mo Year	Time (hours)	Lapsed time (min)	Concentration (micrograms per liter)
1	0.55	0.25	27 10 1984	907	-190	15.97
2	0.55	0.25	27 10 1984	919	-178	31.79
3	0.55	0.25	27 10 1984	931	-166	45.26
4	0.55	0.25	27 10 1984	943	-154	111.17
5	0.55	0.25	27 10 1984	955	-142	183.91
6	0.55	0.25	27 10 1984	1007	-130	189.59
7	0.55	0.25	27 10 1984	1020	-117	112.31
8	0.55	0.25	27 10 1984	1037	-100	183.91
9	0.55	0.25	27 10 1984	1049	-88	178.23
10	0.55	0.25	27 10 1984	1101	-76	189.59
11	0.55	0.25	27 10 1984	1115	-62	229.37
12	0.55	0.25	27 10 1984	1128	-49	206.64
13	0.55	0.25	27 10 1984	1330	73	5.42
14	0.55	0.25	27 10 1984	1337	80	7.13
15	0.55	0.25	27 10 1984	1344	87	17.05
16	0.55	0.25	27 10 1984	1351	94	16.19
17	0.55	0.25	27 10 1984	1358	101	9.13
18	0.55	0.25	27 10 1984	1405	108	19.81
19	0.55	0.25	27 10 1984	1412	115	9.99
20	0.55	0.25	27 10 1984	1419	122	32.47
21	0.55	0.25	27 10 1984	1426	129	28.08
22	0.55	0.25	27 10 1984	1433	136	29.43
23	0.55	0.25	27 10 1984	1440	143	17.06
24	0.55	0.25	27 10 1984	1447	150	16.19
25	0.55	0.25	27 10 1984	1454	157	32.47
26	0.55	0.25	27 10 1984	1501	164	20.90
27	0.55	0.25	27 10 1984	1508	171	16.52
28	0.55	0.25	27 10 1984	1515	178	18.16
29	0.55	0.25	27 10 1984	1522	185	16.52
30	0.55	0.25	27 10 1984	1529	192	17.06
31	0.55	0.25	27 10 1984	1908	411	0.68
32	0.55	0.25	27 10 1984	1955	458	0.20
33	0.55	0.25	27 10 1984	2038	501	0.11
34	0.55	0.25	27 10 1984	2111	534	0.01
35	0.55	0.25	27 10 1984	2200	583	0.11
36	0.55	0.25	27 10 1984	2234	617	0.11
37	0.55	0.25	27 10 1984	2303	646	0.11
38	0.55	0.25	27 10 1984	2345	688	0.20
39	0.55	0.25	28 10 1984	28	731	0.01
40	0.55	0.50	27 10 1984	906	-191	2.67
41	0.55	0.50	27 10 1984	918	-179	178.23
42	0.55	0.50	27 10 1984	930	-167	82.76
43	0.55	0.50	27 10 1984	942	-155	82.76
44	0.55	0.50	27 10 1984	954	-143	253.24
45	0.55	0.50	27 10 1984	1006	-131	318.02
46	0.55	0.50	27 10 1984	1018	-119	223.69
47	0.55	0.50	27 10 1984	1030	-107	382.80
48	0.55	0.50	27 10 1984	1042	-95	239.60
49	0.55	0.50	27 10 1984	1054	-83	236.19
50	0.55	0.50	27 10 1984	1106	-71	320.29

Sample number	Miles down- stream	Percent of width	Date Day Mo Year	Time (hours)	Lapsed time (min)	Concentration (micrograms per liter)
51	0.55	0.50	27 10 1984	1118	-59	320.29
52	0.55	0.50	27 10 1984	1320	63	61.17
53	0.55	0.50	27 10 1984	1326	69	85.03
54	0.55	0.50	27 10 1984	1332	75	112.31
55	0.55	0.50	27 10 1984	1338	81	97.54
56	0.55	0.50	27 10 1984	1345	88	75.94
57	0.55	0.50	27 10 1984	1351	94	144.13
58	0.55	0.50	27 10 1984	1357	100	100.94
59	0.55	0.50	27 10 1984	1403	106	140.72
60	0.55	0.50	27 10 1984	1409	112	154.36
61	0.55	0.50	27 10 1984	1416	119	137.31
62	0.55	0.50	27 10 1984	1422	125	120.27
63	0.55	0.50	27 10 1984	1428	131	140.72
64	0.55	0.50	27 10 1984	1434	137	154.36
65	0.55	0.50	27 10 1984	1440	143	223.69
66	0.55	0.50	27 10 1984	1447	150	171.41
67	0.55	0.50	27 10 1984	1453	156	212.32
68	0.55	0.50	27 10 1984	1459	162	185.05
69	0.55	0.50	27 10 1984	1505	168	208.91
70	0.55	0.50	27 10 1984	1912	415	0.58
71	0.55	0.50	27 10 1984	1957	460	0.30
72	0.55	0.50	27 10 1984	2041	504	0.11
73	0.55	0.50	27 10 1984	2113	536	0.20
74	0.55	0.50	27 10 1984	2202	585	0.11
75	0.55	0.50	27 10 1984	2236	619	2.58
76	0.55	0.50	27 10 1984	2305	648	0.01
77	0.55	0.50	27 10 1984	2347	690	0.30
78	0.55	0.50	28 10 1984	28	731	0.01
79	0.55	0.75	27 10 1984	907	-190	1.17
80	0.55	0.75	27 10 1984	914	-183	1.17
81	0.55	0.75	27 10 1984	921	-176	14.31
82	0.55	0.75	27 10 1984	929	-168	29.35
83	0.55	0.75	27 10 1984	943	-154	55.48
84	0.55	0.75	27 10 1984	958	-139	24.80
85	0.55	0.75	27 10 1984	1005	-132	31.62
86	0.55	0.75	27 10 1984	1017	-120	20.89
87	0.55	0.75	27 10 1984	1032	-105	13.23
88	0.55	0.75	27 10 1984	1046	-91	17.06
89	0.55	0.75	27 10 1984	1101	-76	17.61
90	0.55	0.75	27 10 1984	1116	-61	39.57
91	0.55	0.75	27 10 1984	1130	-47	31.46
92	0.55	0.75	27 10 1984	1144	-33	40.71
93	0.55	0.75	27 10 1984	1310	53	64.58
94	0.55	0.75	27 10 1984	1317	60	40.58
95	0.55	0.75	27 10 1984	1324	67	42.98
96	0.55	0.75	27 10 1984	1337	80	29.09
97	0.55	0.75	27 10 1984	1338	81	45.98
98	0.55	0.75	27 10 1984	1344	87	91.85
99	0.55	0.75	27 10 1984	1351	94	31.62
100	0.55	0.75	27 10 1984	1359	102	41.59

Sample number	Miles down- stream	Percent of width	Date			Time (hours)	Lapsed time (min)	Concentration (micrograms per liter)
			Day	Mo	Year			
101	0.55	0.75	27	10	1984	1406	109	20.90
102	0.55	0.75	27	10	1984	1412	115	45.98
103	0.55	0.75	27	10	1984	1417	120	38.55
104	0.55	0.75	27	10	1984	1424	127	14.27
105	0.55	0.75	27	10	1984	1431	134	4.47
106	0.55	0.75	27	10	1984	1438	141	4.57
107	0.55	0.75	27	10	1984	1444	147	4.57
108	0.55	0.75	27	10	1984	1451	154	4.57
109	0.55	0.75	27	10	1984	1458	161	2.67
110	0.55	0.75	27	10	1984	1505	168	3.53
111	0.55	0.75	27	10	1984	1512	175	3.43
112	0.55	0.75	27	10	1984	1519	182	3.81
113	0.55	0.75	27	10	1984	1526	189	11.49
114	0.55	0.75	27	10	1984	1533	196	9.56
115	0.55	0.75	27	10	1984	1540	203	13.62
116	0.55	0.75	27	10	1984	1547	210	6.47
117	0.55	0.75	27	10	1984	1914	417	1.34
118	0.55	0.75	27	10	1984	2000	463	0.20
119	0.55	0.75	27	10	1984	2044	507	0.11
120	0.55	0.75	27	10	1984	2349	692	0.11
121	0.55	0.50	27	10	1984	2347	690	0.30
122	0.55	0.25	27	10	1984	2345	688	0.20
123	0.55	0.75	28	10	1984	30	733	0.30
124	0.55	0.50	28	10	1984	28	731	0.01
125	0.55	0.25	28	10	1984	28	731	0.01
126	1.05	0.25	27	10	1984	1959	462	58.89
127	1.05	0.25	28	10	1984	912	1255	0.11
128	1.05	0.50	28	10	1984	401	944	44.12
129	1.05	0.50	28	10	1984	913	1256	0.20
130	1.00	0.50	28	10	1984	401	944	44.12
131	1.05	0.75	29	10	1984	843	2666	0.49
132	1.05	0.50	29	10	1984	959	2742	0.39
133	1.05	0.50	29	10	1984	1043	2786	0.39
134	1.90	0.25	27	10	1984	1725	308	43.28
135	1.90	0.25	27	10	1984	1740	323	60.03
136	1.90	0.25	27	10	1984	1755	338	111.17
137	1.90	0.25	27	10	1984	1811	354	70.26
138	1.90	0.25	27	10	1984	1826	369	74.81
139	1.90	0.25	27	10	1984	1826	369	73.67
140	1.90	0.25	27	10	1984	1842	385	63.44
141	1.90	0.25	27	10	1984	1857	400	90.72
142	1.90	0.25	27	10	1984	1913	416	74.81
143	1.90	0.25	27	10	1984	1928	431	55.48
144	1.90	0.25	27	10	1984	1943	446	63.44
145	1.90	0.25	27	10	1984	2014	477	53.21
146	1.90	0.25	27	10	1984	2029	492	67.99
147	1.90	0.25	27	10	1984	2045	508	72.53
148	1.90	0.25	27	10	1984	2100	523	65.71
149	1.90	0.25	27	10	1984	2116	539	49.80
150	1.90	0.25	27	10	1984	2131	554	57.76

Sample number	Miles down- stream	Percent of width	Date			Time (hours)	Lapsed time (min)	Concentration (micrograms per liter)
			Day	Mo	Year			
151	1.90	0.25	27	10	1984	2146	569	77.08
152	1.90	0.25	27	10	1984	2202	585	66.85
153	1.90	0.25	27	10	1984	2217	600	62.30
154	1.90	0.25	27	10	1984	2233	616	71.40
155	1.90	0.25	27	10	1984	2248	631	61.17
156	1.90	0.25	27	10	1984	2304	647	57.76
157	1.90	0.25	27	10	1984	2319	662	65.71
158	1.90	0.25	28	10	1984	115	778	39.57
159	1.90	0.25	28	10	1984	139	802	41.85
160	1.90	0.25	28	10	1984	154	817	44.12
161	1.90	0.25	28	10	1984	210	833	42.98
162	1.90	0.25	28	10	1984	225	848	45.26
163	1.90	0.25	28	10	1984	241	864	52.08
164	1.90	0.25	28	10	1984	241	864	52.08
165	1.90	0.25	28	10	1984	256	879	55.48
166	1.90	0.25	28	10	1984	312	895	48.67
167	1.90	0.25	28	10	1984	327	910	45.26
168	1.90	0.25	28	10	1984	343	926	44.12
169	1.90	0.25	28	10	1984	358	941	33.89
170	1.90	0.25	28	10	1984	414	957	33.89
171	1.90	0.25	28	10	1984	429	972	39.57
172	1.90	0.25	28	10	1984	500	1003	33.89
173	1.90	0.25	28	10	1984	531	1034	31.62
174	1.90	0.25	28	10	1984	547	1050	28.21
175	1.90	0.25	28	10	1984	602	1065	35.51
176	1.90	0.25	28	10	1984	618	1081	33.82
177	1.90	0.25	28	10	1984	633	1096	29.77
178	1.90	0.25	28	10	1984	649	1112	28.08
179	1.90	0.25	28	10	1984	704	1127	16.52
180	1.90	0.25	28	10	1984	720	1143	12.68
181	1.90	0.25	28	10	1984	904	1247	2.58
182	1.90	0.25	28	10	1984	1155	1418	0.68
183	1.90	0.25	28	10	1984	1449	1592	0.87
184	1.90	0.25	28	10	1984	1550	1653	0.58
185	1.90	0.25	28	10	1984	1719	1742	0.96
186	1.90	0.25	28	10	1984	1754	1777	0.11
187	1.90	0.50	27	10	1984	1745	328	106.63
188	1.90	0.50	27	10	1984	1800	343	105.49
189	1.90	0.50	27	10	1984	1814	357	96.40
190	1.90	0.50	27	10	1984	1829	372	115.72
191	1.90	0.50	27	10	1984	1844	387	115.72
192	1.90	0.50	27	10	1984	1859	402	127.08
193	1.90	0.50	27	10	1984	1913	416	121.40
194	1.90	0.50	27	10	1984	1928	431	121.40
195	1.90	0.50	27	10	1984	1942	445	130.49
196	1.90	0.50	27	10	1984	1957	460	108.90
197	1.90	0.50	27	10	1984	2011	474	133.90
198	1.90	0.50	27	10	1984	2016	479	104.35
199	1.90	0.50	27	10	1984	2030	493	107.76
200	1.90	0.50	27	10	1984	2045	508	113.45

Sample number	Miles down-stream	Percent of width	Date Day Mo Year	Time (hours)	Lapsed time (min)	Concentration (micrograms per liter)
201	1.90	0.50	27 10 1984	2059	522	130.49
202	1.90	0.50	27 10 1984	2114	537	121.40
203	1.90	0.50	27 10 1984	2128	551	119.13
204	1.90	0.50	27 10 1984	2143	566	108.90
205	1.90	0.50	27 10 1984	2157	580	115.72
206	1.90	0.50	27 10 1984	2212	595	104.35
207	1.90	0.50	27 10 1984	2226	609	115.72
208	1.90	0.50	27 10 1984	2241	624	119.13
209	1.90	0.50	27 10 1984	2255	638	116.86
210	1.90	0.50	27 10 1984	2310	653	114.58
211	1.90	0.50	28 10 1984	206	829	90.72
212	1.90	0.50	28 10 1984	220	843	97.54
213	1.90	0.50	28 10 1984	235	858	97.54
214	1.90	0.50	28 10 1984	249	872	72.53
215	1.90	0.50	28 10 1984	304	887	64.58
216	1.90	0.50	28 10 1984	319	902	56.62
217	1.90	0.50	28 10 1984	333	916	64.58
218	1.90	0.50	28 10 1984	347	930	61.17
219	1.90	0.50	28 10 1984	416	959	*
220	1.90	0.50	28 10 1984	430	973	47.53
221	1.90	0.50	28 10 1984	445	988	42.98
222	1.90	0.50	28 10 1984	459	1002	38.44
223	1.90	0.50	28 10 1984	514	1017	38.44
224	1.90	0.50	28 10 1984	528	1031	36.16
225	1.90	0.50	28 10 1984	543	1046	35.03
226	1.90	0.50	28 10 1984	557	1060	31.62
227	1.90	0.50	28 10 1984	612	1075	34.50
228	1.90	0.50	28 10 1984	626	1089	42.60
229	1.90	0.50	28 10 1984	641	1104	30.78
230	1.90	0.50	28 10 1984	655	1118	29.09
231	1.90	0.50	28 10 1984	710	1133	30.10
232	1.90	0.50	28 10 1984	724	1147	28.75
233	1.90	0.50	28 10 1984	905	1248	0.30
234	1.90	0.50	28 10 1984	1200	1423	1.15
235	1.90	0.50	28 10 1984	1450	1593	0.49
236	1.90	0.50	28 10 1984	1551	1654	1.25
237	1.90	0.50	28 10 1984	1720	1743	0.01
238	1.90	0.50	28 10 1984	1755	1778	0.01
239	1.90	0.75	27 10 1984	1800	343	95.26
240	1.90	0.75	27 10 1984	1814	357	114.58
241	1.90	0.75	27 10 1984	1828	371	110.04
242	1.90	0.75	27 10 1984	1841	384	178.23
243	1.90	0.75	27 10 1984	1855	398	113.45
244	1.90	0.75	27 10 1984	1909	412	104.35
245	1.90	0.75	27 10 1984	1922	425	112.31
246	1.90	0.75	27 10 1984	1936	439	113.45
247	1.90	0.75	27 10 1984	1950	453	133.90
248	1.90	0.75	27 10 1984	2004	467	111.17
249	1.90	0.75	27 10 1984	2018	481	133.90
250	1.90	0.75	27 10 1984	2031	494	112.31

Sample number	Miles down-stream	Percent of width	Date Day Mo Year	Time (hours)	Lapsed time (min)	Concentration (micrograms per liter)
251	1.90	0.75	27 10 1984	2045	508	120.27
252	1.90	0.75	27 10 1984	2059	522	121.40
253	1.90	0.75	27 10 1984	2112	535	119.13
254	1.90	0.75	27 10 1984	2126	549	96.40
255	1.90	0.75	27 10 1984	2140	563	112.31
256	1.90	0.75	27 10 1984	2154	577	110.04
257	1.90	0.75	27 10 1984	2208	591	103.22
258	1.90	0.75	27 10 1984	2221	604	125.95
259	1.90	0.75	27 10 1984	2249	632	99.81
260	1.90	0.75	27 10 1984	2302	645	105.49
261	1.90	0.75	27 10 1984	2302	645	113.45
262	1.90	0.75	27 10 1984	2316	659	91.85
263	1.90	0.75	28 10 1984	234	857	62.30
264	1.90	0.75	28 10 1984	248	871	60.03
265	1.90	0.75	28 10 1984	302	885	64.58
266	1.90	0.75	28 10 1984	316	899	63.44
267	1.90	0.75	28 10 1984	329	912	56.62
268	1.90	0.75	28 10 1984	343	926	52.08
269	1.90	0.75	28 10 1984	357	940	49.80
270	1.90	0.75	28 10 1984	411	954	42.98
271	1.90	0.75	28 10 1984	424	967	44.12
272	1.90	0.75	28 10 1984	438	981	50.94
273	1.90	0.75	28 10 1984	452	995	46.39
274	1.90	0.75	28 10 1984	506	1009	44.12
275	1.90	0.75	28 10 1984	519	1022	42.98
276	1.90	0.75	28 10 1984	533	1036	39.57
277	1.90	0.75	28 10 1984	547	1050	39.57
278	1.90	0.75	28 10 1984	601	1064	37.30
279	1.90	0.75	28 10 1984	614	1077	36.16
280	1.90	0.75	28 10 1984	628	1091	28.21
281	1.90	0.75	28 10 1984	641	1104	39.56
282	1.90	0.75	28 10 1984	709	1132	36.18
283	1.90	0.75	28 10 1984	723	1146	33.82
284	1.90	0.75	28 10 1984	736	1159	32.13
285	1.90	0.75	28 10 1984	750	1173	31.12
286	1.90	0.75	28 10 1984	906	1249	0.30
287	1.90	0.75	28 10 1984	1200	1423	0.68
288	1.90	0.75	28 10 1984	1451	1594	3.15
289	1.90	0.75	28 10 1984	1552	1655	5.33
290	1.90	0.75	28 10 1984	1721	1744	0.11
291	1.90	0.75	28 10 1984	1756	1779	0.39
292	2.35	0.25	28 10 1984	854	1237	4.38
293	2.35	0.25	28 10 1984	957	1300	3.15
294	2.35	0.25	28 10 1984	1058	1361	1.72
295	2.35	0.25	28 10 1984	1151	1414	1.34
296	2.35	0.25	28 10 1984	1314	1497	0.96
297	2.35	0.25	28 10 1984	1354	1537	0.49
298	2.35	0.25	28 10 1984	1844	1827	0.01
299	2.35	0.25	28 10 1984	1948	1891	1.91
300	2.35	0.50	28 10 1984	855	1238	9.13

Sample number	Miles down-stream	Percent of width	Date			Time (hours)	Lapsed time (min)	Concentration (micrograms per liter)
			Day	Mo	Year			
301	2.35	0.50	28	10	1984	958	1301	5.04
302	2.35	0.50	28	10	1984	1059	1362	4.66
303	2.35	0.50	28	10	1984	1152	1415	4.66
304	2.35	0.50	28	10	1984	1316	1499	14.05
305	2.35	0.50	28	10	1984	1355	1538	7.23
306	2.35	0.50	28	10	1984	1848	1831	0.01
307	2.35	0.50	28	10	1984	1950	1893	0.01
308	2.35	0.50	29	10	1984	955	2738	0.30
309	2.35	0.50	29	10	1984	1041	2784	0.30
310	2.35	0.75	28	10	1984	856	1239	16.62
311	2.35	0.75	28	10	1984	959	1302	14.87
312	2.35	0.75	28	10	1984	1100	1363	15.42
313	2.35	0.75	28	10	1984	1153	1416	13.23
314	2.35	0.75	28	10	1984	1315	1498	9.99
315	2.35	0.75	28	10	1984	1356	1539	10.20
316	2.35	0.75	28	10	1984	1848	1831	0.11
317	2.35	0.75	28	10	1984	1951	1894	0.11
318	2.50	0.25	28	10	1984	6	709	75.94
319	2.50	0.25	28	10	1984	41	744	27.74
320	2.50	0.25	28	10	1984	227	850	30.78
321	2.50	0.25	28	10	1984	412	955	42.98
322	2.50	0.25	28	10	1984	508	1011	37.30
323	2.50	0.25	28	10	1984	544	1047	37.30
324	2.50	0.25	28	10	1984	711	1134	34.83
325	2.50	0.25	28	10	1984	751	1174	20.90
326	2.50	0.25	28	10	1984	848	1231	14.87
327	2.50	0.25	28	10	1984	955	1298	10.48
328	2.50	0.25	28	10	1984	1056	1359	5.28
329	2.50	0.25	28	10	1984	1148	1411	2.29
330	2.50	0.25	28	10	1984	1305	1488	2.77
331	2.50	0.25	28	10	1984	1351	1534	3.81
332	2.50	0.25	28	10	1984	1447	1590	1.25
333	2.50	0.25	28	10	1984	1548	1651	1.06
334	2.50	0.25	28	10	1984	1714	1737	1.34
335	2.50	0.25	28	10	1984	1751	1774	1.63
336	2.50	0.25	28	10	1984	1840	1823	1.34
337	2.50	0.25	28	10	1984	1944	1887	0.68
338	2.50	0.25	28	10	1984	2041	1944	0.68
339	2.50	0.25	28	10	1984	2140	2003	0.58
340	2.50	0.25	28	10	1984	2251	2074	0.58
341	2.50	0.50	28	10	1984	4	707	46.39
342	2.50	0.50	28	10	1984	42	745	47.53
343	2.50	0.50	28	10	1984	229	852	71.40
344	2.50	0.50	28	10	1984	413	956	42.98
345	2.50	0.50	28	10	1984	509	1012	58.89
346	2.50	0.50	28	10	1984	546	1049	61.17
347	2.50	0.50	28	10	1984	712	1135	38.21
348	2.50	0.50	28	10	1984	750	1173	32.47
349	2.50	0.50	28	10	1984	847	1230	22.00
350	2.50	0.50	28	10	1984	954	1297	9.56

Sample number	Miles down- stream	Percent of width	Date			Time (hours)	Lapsed time (min)	Concentration (micrograms per liter)
			Day	Mo	Year			
351	2.50	0.50	28	10	1984	1055	1358	8.06
352	2.50	0.50	28	10	1984	1147	1410	4.47
353	2.50	0.50	28	10	1984	1304	1487	5.07
354	2.50	0.50	28	10	1984	1350	1533	7.32
355	2.50	0.50	28	10	1984	1446	1589	8.65
356	2.50	0.50	28	10	1984	1547	1650	0.49
357	2.50	0.50	28	10	1984	1713	1736	0.11
358	2.50	0.50	28	10	1984	1749	1772	0.68
359	2.50	0.50	28	10	1984	1841	1824	0.30
360	2.50	0.50	28	10	1984	1945	1888	0.39
361	2.50	0.50	28	10	1984	2042	1945	1.25
362	2.50	0.50	28	10	1984	2141	2004	0.11
363	2.50	0.50	28	10	1984	2258	2081	0.20
364	2.50	0.75	28	10	1984	2	705	30.78
365	2.50	0.75	28	10	1984	45	748	83.90
366	2.50	0.75	28	10	1984	230	853	98.67
367	2.50	0.75	28	10	1984	414	957	60.03
368	2.50	0.75	28	10	1984	510	1013	65.71
369	2.50	0.75	28	10	1984	547	1050	70.26
370	2.50	0.75	28	10	1984	749	1172	38.44
371	2.50	0.75	28	10	1984	846	1229	47.53
372	2.50	0.75	28	10	1984	953	1296	38.21
373	2.50	0.75	28	10	1984	1054	1357	16.52
374	2.50	0.75	28	10	1984	1146	1409	16.83
375	2.50	0.75	28	10	1984	1303	1486	31.79
376	2.50	0.75	28	10	1984	1349	1532	42.98
377	2.50	0.75	28	10	1984	1445	1588	6.56
378	2.50	0.75	28	10	1984	1546	1649	8.28
379	2.50	0.75	28	10	1984	1748	1771	1.06
380	2.50	0.75	28	10	1984	1842	1825	0.11
381	2.50	0.75	28	10	1984	1946	1889	0.11
382	2.50	0.75	28	10	1984	2045	1948	0.11
383	2.50	0.75	28	10	1984	2141	2004	0.01
384	2.50	0.75	28	10	1984	2259	2082	0.30
385	2.50	0.50	27	10	1984	*		85.03
386	2.50	0.50	27	10	1984	*		86.17
387	2.75	0.25	29	10	1984	1156	2859	0.49
388	2.75	0.50	29	10	1984	950	2733	0.30
389	2.75	0.50	29	10	1984	952	2735	0.30
390	2.75	0.50	29	10	1984	1035	2778	0.30
391	2.75	0.75	29	10	1984	1159	2862	0.39
392	3.10	0.25	28	10	1984	13	716	0.30
393	3.10	0.25	28	10	1984	13	716	0.20
394	3.10	0.25	28	10	1984	47	750	0.20
395	3.10	0.25	28	10	1984	52	755	0.20
396	3.10	0.25	28	10	1984	236	859	2.58
397	3.10	0.25	28	10	1984	244	867	0.01
398	3.10	0.25	28	10	1984	401	944	0.00
399	3.10	0.25	28	10	1984	406	949	4.00
400	3.10	0.25	28	10	1984	502	1005	4.76

Sample number	Miles down-stream	Percent of width	Date Day Mo Year	Time (hours)	Lapsed time (min)	Concentration (micrograms per liter)
401	3.10	0.25	28 10 1984	542	1045	6.14
402	3.10	0.25	28 10 1984	701	1124	18.71
403	3.10	0.25	28 10 1984	744	1167	31.12
404	3.10	0.25	28 10 1984	841	1224	44.12
405	3.10	0.25	28 10 1984	946	1289	35.03
406	3.10	0.25	28 10 1984	1048	1351	38.44
407	3.10	0.25	28 10 1984	1141	1404	45.26
408	3.10	0.25	28 10 1984	1258	1481	52.08
409	3.10	0.25	28 10 1984	1344	1527	31.62
410	3.10	0.25	28 10 1984	1440	1583	41.85
411	3.10	0.25	28 10 1984	1540	1643	49.80
412	3.10	0.25	28 10 1984	1701	1724	36.16
413	3.10	0.25	28 10 1984	1743	1766	40.71
414	3.10	0.25	28 10 1984	1836	1819	40.91
415	3.10	0.25	28 10 1984	1937	1880	32.81
416	3.10	0.25	28 10 1984	2037	1940	34.50
417	3.10	0.25	28 10 1984	2135	1998	30.10
418	3.10	0.25	28 10 1984	2252	2075	28.42
419	3.10	0.25	28 10 1984	2343	2126	29.77
420	3.10	0.25	29 10 1984	105	2208	21.45
421	3.10	0.25	29 10 1984	148	2251	14.05
422	3.10	0.25	29 10 1984	248	2311	11.06
423	3.10	0.25	29 10 1984	344	2367	2.86
424	3.10	0.25	29 10 1984	442	2425	5.61
425	3.10	0.25	29 10 1984	548	2491	2.86
426	3.10	0.25	29 10 1984	655	2558	2.20
427	3.10	0.25	29 10 1984	758	2621	1.82
428	3.10	0.25	29 10 1984	857	2680	1.72
429	3.10	0.25	29 10 1984	952	2735	0.39
430	3.10	0.25	29 10 1984	1056	2799	0.01
431	3.10	0.25	29 10 1984	1210	2873	0.58
432	3.10	0.50	28 10 1984	11	714	0.20
433	3.10	0.50	28 10 1984	14	717	0.11
434	3.10	0.50	28 10 1984	48	751	0.68
435	3.10	0.50	28 10 1984	53	756	0.20
436	3.10	0.50	28 10 1984	237	860	11.03
437	3.10	0.50	28 10 1984	245	868	0.01
438	3.10	0.50	28 10 1984	402	945	0.00
439	3.10	0.50	28 10 1984	408	951	27.40
440	3.10	0.50	28 10 1984	503	1006	36.16
441	3.10	0.50	28 10 1984	542	1045	36.16
442	3.10	0.50	28 10 1984	700	1123	63.44
443	3.10	0.50	28 10 1984	746	1169	61.17
444	3.10	0.50	28 10 1984	842	1225	65.71
445	3.10	0.50	28 10 1984	949	1292	63.44
446	3.10	0.50	28 10 1984	1049	1352	71.40
447	3.10	0.50	28 10 1984	1142	1405	74.81
448	3.10	0.50	28 10 1984	1259	1482	55.48
449	3.10	0.50	28 10 1984	1345	1528	53.21
450	3.10	0.50	28 10 1984	1441	1584	72.53

Sample number	Miles down-stream	Percent of width	Date Day Mo Year	Time (hours)	Lapsed time (min)	Concentration (micrograms per liter)
451	3.10	0.50	28 10 1984	1541	1644	66.85
452	3.10	0.50	28 10 1984	1703	1726	57.76
453	3.10	0.50	28 10 1984	1744	1767	38.44
454	3.10	0.50	28 10 1984	1837	1820	38.44
455	3.10	0.50	28 10 1984	1940	1883	39.57
456	3.10	0.50	28 10 1984	2038	1941	34.83
457	3.10	0.50	28 10 1984	2136	1999	30.44
458	3.10	0.50	28 10 1984	2253	2076	56.62
459	3.10	0.50	28 10 1984	2344	2127	13.84
460	3.10	0.50	29 10 1984	106	2209	9.99
461	3.10	0.50	29 10 1984	108	2211	5.28
462	3.10	0.50	29 10 1984	149	2252	7.21
463	3.10	0.50	29 10 1984	249	2312	4.38
464	3.10	0.50	29 10 1984	345	2368	4.95
465	3.10	0.50	29 10 1984	443	2426	3.53
466	3.10	0.50	29 10 1984	549	2492	2.10
467	3.10	0.50	29 10 1984	651	2554	1.72
468	3.10	0.50	29 10 1984	858	2681	1.15
469	3.10	0.50	29 10 1984	955	2738	0.39
470	3.10	0.50	29 10 1984	1057	2800	0.01
471	3.10	0.50	29 10 1984	1211	2874	0.01
472	3.10	0.75	28 10 1984	10	713	0.11
473	3.10	0.75	28 10 1984	15	718	0.20
474	3.10	0.75	28 10 1984	49	752	4.47
475	3.10	0.75	28 10 1984	54	757	0.20
476	3.10	0.75	28 10 1984	238	861	18.16
477	3.10	0.75	28 10 1984	245	868	0.01
478	3.10	0.75	28 10 1984	403	946	0.00
479	3.10	0.75	28 10 1984	409	952	31.62
480	3.10	0.75	28 10 1984	504	1007	42.98
481	3.10	0.75	28 10 1984	544	1047	41.85
482	3.10	0.75	28 10 1984	659	1122	44.12
483	3.10	0.75	28 10 1984	713	1136	47.53
484	3.10	0.75	28 10 1984	747	1170	56.62
485	3.10	0.75	28 10 1984	843	1226	48.67
486	3.10	0.75	28 10 1984	950	1293	57.76
487	3.10	0.75	28 10 1984	1050	1353	65.71
488	3.10	0.75	28 10 1984	1143	1406	79.35
489	3.10	0.75	28 10 1984	1300	1483	55.48
490	3.10	0.75	28 10 1984	1346	1529	55.48
491	3.10	0.75	28 10 1984	1442	1585	82.76
492	3.10	0.75	28 10 1984	1542	1645	70.26
493	3.10	0.75	28 10 1984	1704	1727	46.39
494	3.10	0.75	28 10 1984	1744	1767	30.48
495	3.10	0.75	28 10 1984	1838	1821	28.42
496	3.10	0.75	28 10 1984	1942	1885	39.22
497	3.10	0.75	28 10 1984	2039	1942	38.44
498	3.10	0.75	28 10 1984	2137	2000	31.79
499	3.10	0.75	28 10 1984	2254	2077	30.78
500	3.10	0.75	28 10 1984	2345	2128	20.35

Sample number	Miles down-stream	Percent of width	Date			Time (hours)	Lapsed time (min)	Concentration (micrograms per liter)
			Day	Mo	Year			
501	3.10	0.75	29	10	1984	107	2210	14.69
502	3.10	0.75	29	10	1984	150	2253	6.99
503	3.10	0.75	29	10	1984	250	2313	2.48
504	3.10	0.75	29	10	1984	347	2370	4.85
505	3.10	0.75	29	10	1984	444	2427	7.21
506	3.10	0.75	29	10	1984	550	2493	7.13
507	3.10	0.75	29	10	1984	652	2555	5.33
508	3.10	0.75	29	10	1984	759	2622	3.81
509	3.10	0.75	29	10	1984	955	2738	0.39
510	3.10	0.75	29	10	1984	1058	2801	0.01
511	3.10	0.75	29	10	1984	1212	2875	0.01
512	3.55	0.25	28	10	1984	455	998	0.20
513	3.55	0.25	28	10	1984	537	1040	0.30
514	3.55	0.25	28	10	1984	655	1118	6.78
515	3.55	0.25	28	10	1984	740	1163	5.33
516	3.55	0.25	28	10	1984	837	1220	6.94
517	3.55	0.25	28	10	1984	942	1285	10.63
518	3.55	0.25	28	10	1984	1044	1347	5.71
519	3.55	0.25	28	10	1984	1137	1400	9.56
520	3.55	0.25	28	10	1984	1250	1473	17.06
521	3.55	0.25	28	10	1984	1340	1523	22.00
522	3.55	0.25	28	10	1984	1435	1578	35.51
523	3.55	0.25	28	10	1984	1535	1638	37.54
524	3.55	0.25	28	10	1984	1651	1714	38.21
525	3.55	0.25	28	10	1984	1737	1760	45.31
526	3.55	0.25	28	10	1984	1832	1815	46.39
527	3.55	0.25	28	10	1984	1936	1879	49.80
528	3.55	0.25	28	10	1984	2034	1937	49.80
529	3.55	0.25	28	10	1984	2131	1994	47.53
530	3.55	0.25	28	10	1984	2231	2054	47.53
531	3.55	0.25	28	10	1984	2340	2123	37.30
532	3.55	0.25	29	10	1984	5	2148	20.90
533	3.55	0.25	29	10	1984	101	2204	36.16
534	3.55	0.25	29	10	1984	144	2247	38.44
535	3.55	0.25	29	10	1984	246	2309	36.16
536	3.55	0.25	29	10	1984	341	2364	39.57
537	3.55	0.25	29	10	1984	439	2422	30.48
538	3.55	0.25	29	10	1984	651	2554	14.87
539	3.55	0.25	29	10	1984	653	2556	28.42
540	3.55	0.25	29	10	1984	750	2613	12.56
541	3.55	0.25	29	10	1984	854	2677	1.91
542	3.55	0.25	29	10	1984	948	2731	0.87
543	3.55	0.25	29	10	1984	1051	2794	0.01
544	3.55	0.25	29	10	1984	1204	2867	0.11
545	3.55	0.25	29	10	1984	1253	2916	0.11
546	3.55	0.25	29	10	1984	1350	2973	0.20
547	3.55	0.50	28	10	1984	436	979	0.20
548	3.55	0.50	28	10	1984	538	1041	0.49
549	3.55	0.50	28	10	1984	656	1119	2.39
550	3.55	0.50	28	10	1984	741	1164	3.15

Sample number	Miles down- stream	Percent of width	Date			Time (hours)	Lapsed time (min)	Concentration (micrograms per liter)
			Day	Mo	Year			
551	3.55	0.50	28	10	1984	838	1221	4.47
552	3.55	0.50	28	10	1984	943	1286	8.06
553	3.55	0.50	28	10	1984	1045	1348	6.99
554	3.55	0.50	28	10	1984	1138	1401	13.23
555	3.55	0.50	28	10	1984	1251	1474	31.46
556	3.55	0.50	28	10	1984	1341	1524	45.31
557	3.55	0.50	28	10	1984	1436	1579	44.63
558	3.55	0.50	28	10	1984	1537	1640	52.08
559	3.55	0.50	28	10	1984	1652	1715	40.71
560	3.55	0.50	28	10	1984	1738	1761	41.85
561	3.55	0.50	28	10	1984	1835	1818	66.85
562	3.55	0.50	28	10	1984	1937	1880	57.76
563	3.55	0.50	28	10	1984	2035	1938	49.80
564	3.55	0.50	28	10	1984	2132	1995	42.98
565	3.55	0.50	28	10	1984	2232	2055	44.12
566	3.55	0.50	28	10	1984	2341	2124	29.35
567	3.55	0.50	28	10	1984	2342	2125	40.71
568	3.55	0.50	29	10	1984	102	2205	29.77
569	3.55	0.50	29	10	1984	106	2209	31.12
570	3.55	0.50	29	10	1984	145	2248	27.40
571	3.55	0.50	29	10	1984	247	2310	31.12
572	3.55	0.50	29	10	1984	342	2365	29.77
573	3.55	0.50	29	10	1984	440	2423	21.45
574	3.55	0.50	29	10	1984	547	2490	17.06
575	3.55	0.50	29	10	1984	652	2555	13.23
576	3.55	0.50	29	10	1984	751	2614	8.49
577	3.55	0.50	29	10	1984	855	2678	1.72
578	3.55	0.50	29	10	1984	948	2731	0.77
579	3.55	0.50	29	10	1984	949	2732	0.96
580	3.55	0.50	29	10	1984	1035	2778	0.30
581	3.55	0.50	29	10	1984	1052	2795	0.11
582	3.55	0.50	29	10	1984	1154	2857	0.39
583	3.55	0.50	29	10	1984	1205	2868	1.34
584	3.55	0.50	29	10	1984	1252	2915	0.11
585	3.55	0.50	29	10	1984	1254	2917	0.39
586	3.55	0.50	29	10	1984	1351	2974	0.11
587	3.55	0.75	28	10	1984	437	980	0.20
588	3.55	0.75	28	10	1984	538	1041	0.20
589	3.55	0.75	28	10	1984	657	1120	0.58
590	3.55	0.75	28	10	1984	742	1165	0.49
591	3.55	0.75	28	10	1984	839	1222	0.77
592	3.55	0.75	28	10	1984	944	1287	4.64
593	3.55	0.75	28	10	1984	1046	1349	4.47
594	3.55	0.75	28	10	1984	1139	1402	15.42
595	3.55	0.75	28	10	1984	1252	1475	17.61
596	3.55	0.75	28	10	1984	1342	1525	8.28
597	3.55	0.75	28	10	1984	1437	1580	9.35
598	3.55	0.75	28	10	1984	1537	1640	13.20
599	3.55	0.75	28	10	1984	1653	1716	36.18
600	3.55	0.75	28	10	1984	1739	1762	42.26

Sample number	Miles downstream	Percent of width	Date Day Mo Year	Time (hours)	Lapsed time (min)	Concentration (micrograms per liter)
601	3.55	0.75	28 10 1984	1834	1817	71.40
602	3.55	0.75	28 10 1984	1938	1881	58.89
603	3.55	0.75	28 10 1984	2036	1939	53.21
604	3.55	0.75	28 10 1984	2133	1996	44.12
605	3.55	0.75	28 10 1984	2232	2055	42.98
606	3.55	0.75	29 10 1984	103	2206	42.98
607	3.55	0.75	29 10 1984	140	2243	40.71
608	3.55	0.75	29 10 1984	248	2311	41.85
609	3.55	0.75	29 10 1984	343	2366	43.28
610	3.55	0.75	29 10 1984	441	2424	34.83
611	3.55	0.75	29 10 1984	548	2491	32.81
612	3.55	0.75	29 10 1984	752	2615	17.69
613	3.55	0.75	29 10 1984	832	2655	6.47
614	3.55	0.75	29 10 1984	856	2679	2.39
615	3.55	0.75	29 10 1984	950	2733	1.15
616	3.55	0.75	29 10 1984	1053	2796	0.11
617	3.55	0.75	29 10 1984	1206	2869	0.39
618	3.55	0.75	29 10 1984	1255	2918	0.11
619	3.55	0.75	29 10 1984	1352	2975	0.49
620	4.00	0.25	28 10 1984	358	941	0.30
621	4.00	0.25	28 10 1984	450	993	0.30
622	4.00	0.25	28 10 1984	533	1036	0.39
623	4.00	0.25	28 10 1984	641	1104	0.30
624	4.00	0.25	28 10 1984	737	1160	0.49
625	4.00	0.25	28 10 1984	835	1218	0.49
626	4.00	0.25	28 10 1984	932	1275	0.49
627	4.00	0.25	28 10 1984	1040	1343	0.49
628	4.00	0.25	28 10 1984	1134	1397	0.96
629	4.00	0.25	28 10 1984	1243	1466	0.58
630	4.00	0.25	28 10 1984	1333	1516	0.49
631	4.00	0.25	28 10 1984	1430	1573	1.63
632	4.00	0.25	28 10 1984	1530	1633	1.72
633	4.00	0.25	28 10 1984	1643	1706	1.15
634	4.00	0.25	28 10 1984	1730	1753	0.30
635	4.00	0.25	28 10 1984	1828	1811	2.01
636	4.00	0.25	28 10 1984	1932	1875	13.20
637	4.00	0.25	28 10 1984	2030	1933	14.48
638	4.00	0.25	28 10 1984	2129	1992	9.99
639	4.00	0.25	28 10 1984	2227	2050	30.78
640	4.00	0.25	28 10 1984	2337	2120	37.30
641	4.00	0.25	29 10 1984	58	2201	36.16
642	4.00	0.25	29 10 1984	140	2243	36.16
643	4.00	0.25	29 10 1984	242	2305	38.44
644	4.00	0.25	29 10 1984	338	2361	39.90
645	4.00	0.25	29 10 1984	435	2418	28.21
646	4.00	0.25	29 10 1984	545	2488	30.48
647	4.00	0.25	29 10 1984	649	2552	31.62
648	4.00	0.25	29 10 1984	745	2608	34.16
649	4.00	0.25	29 10 1984	819	2642	8.92
650	4.00	0.25	29 10 1984	945	2728	1.53

Sample number	Miles down-stream	Percent of width	Date			Time (hours)	Lapsed time (min)	Concentration (micrograms per liter)
			Day	Mo	Year			
651	4.00	0.25	29	10	1984	1048	2791	0.87
652	4.00	0.25	29	10	1984	1157	2860	0.39
653	4.00	0.25	29	10	1984	1250	2913	0.87
654	4.00	0.25	29	10	1984	1345	2968	0.11
655	4.00	0.50	28	10	1984	359	942	0.30
656	4.00	0.50	28	10	1984	451	994	0.30
657	4.00	0.50	28	10	1984	534	1037	0.30
658	4.00	0.50	28	10	1984	642	1105	41.85
659	4.00	0.50	28	10	1984	642	1105	0.20
660	4.00	0.50	28	10	1984	736	1159	0.58
661	4.00	0.50	28	10	1984	836	1219	0.49
662	4.00	0.50	28	10	1984	939	1282	0.49
663	4.00	0.50	28	10	1984	1041	1344	0.49
664	4.00	0.50	28	10	1984	1135	1398	0.39
665	4.00	0.50	28	10	1984	1244	1467	0.58
666	4.00	0.50	28	10	1984	1334	1517	1.53
667	4.00	0.50	28	10	1984	1431	1574	0.39
668	4.00	0.50	28	10	1984	1531	1634	5.04
669	4.00	0.50	28	10	1984	1644	1707	3.72
670	4.00	0.50	28	10	1984	1731	1754	3.15
671	4.00	0.50	28	10	1984	1829	1812	5.33
672	4.00	0.50	28	10	1984	1933	1876	18.16
673	4.00	0.50	28	10	1984	2031	1934	30.78
674	4.00	0.50	28	10	1984	2130	1993	15.42
675	4.00	0.50	28	10	1984	2228	2051	40.58
676	4.00	0.50	28	10	1984	2338	2121	48.67
677	4.00	0.50	29	10	1984	59	2202	49.80
678	4.00	0.50	29	10	1984	104	2207	33.89
679	4.00	0.50	29	10	1984	142	2245	45.26
680	4.00	0.50	29	10	1984	243	2306	41.85
681	4.00	0.50	29	10	1984	337	2360	38.44
682	4.00	0.50	29	10	1984	436	2419	40.24
683	4.00	0.50	29	10	1984	546	2489	35.03
684	4.00	0.50	29	10	1984	648	2551	35.03
685	4.00	0.50	29	10	1984	746	2609	34.83
686	4.00	0.50	29	10	1984	851	2674	6.78
687	4.00	0.50	29	10	1984	946	2729	1.34
688	4.00	0.50	29	10	1984	1049	2792	0.11
689	4.00	0.50	29	10	1984	1158	2861	0.11
690	4.00	0.50	29	10	1984	1251	2914	0.87
691	4.00	0.50	29	10	1984	1346	2969	0.01
692	4.00	0.75	28	10	1984	400	943	2.86
693	4.00	0.75	28	10	1984	452	995	0.20
694	4.00	0.75	28	10	1984	535	1038	0.20
695	4.00	0.75	28	10	1984	643	1106	0.30
696	4.00	0.75	28	10	1984	735	1158	0.30
697	4.00	0.75	28	10	1984	837	1220	0.49
698	4.00	0.75	28	10	1984	940	1283	0.49
699	4.00	0.75	28	10	1984	1042	1345	0.39
700	4.00	0.75	28	10	1984	1136	1399	0.96

Sample number	Miles down-stream	Percent of width	Date Day Mo Year	Time (hours)	Lapsed time (min)	Concentration (micrograms per liter)
701	4.00	0.75	28 10 1984	1203	1426	0.77
702	4.00	0.75	28 10 1984	1245	1468	0.68
703	4.00	0.75	28 10 1984	1330	1513	0.87
704	4.00	0.75	28 10 1984	1335	1518	1.34
705	4.00	0.75	28 10 1984	1432	1575	0.20
706	4.00	0.75	28 10 1984	1533	1636	2.01
707	4.00	0.75	28 10 1984	1645	1708	5.61
708	4.00	0.75	28 10 1984	1732	1755	9.13
709	4.00	0.75	28 10 1984	1830	1813	9.99
710	4.00	0.75	28 10 1984	1934	1877	28.21
711	4.00	0.75	28 10 1984	2032	1935	49.80
712	4.00	0.75	28 10 1984	2131	1994	60.03
713	4.00	0.75	28 10 1984	2224	2047	61.17
714	4.00	0.75	28 10 1984	2339	2122	58.89
715	4.00	0.75	29 10 1984	100	2203	56.62
716	4.00	0.75	29 10 1984	143	2246	46.39
717	4.00	0.75	29 10 1984	244	2307	44.12
718	4.00	0.75	29 10 1984	340	2363	41.85
719	4.00	0.75	29 10 1984	437	2420	38.44
720	4.00	0.75	29 10 1984	547	2490	38.44
721	4.00	0.75	29 10 1984	649	2552	39.57
722	4.00	0.75	29 10 1984	747	2610	38.89
723	4.00	0.75	29 10 1984	852	2675	9.13
724	4.00	0.75	29 10 1984	947	2730	1.25
725	4.00	0.75	29 10 1984	1050	2793	0.20
726	4.00	0.75	29 10 1984	1159	2862	1.63
727	4.00	0.75	29 10 1984	1252	2915	0.11
728	4.00	0.75	29 10 1984	1347	2970	0.20
729	4.50	0.25	28 10 1984	353	936	0.30
730	4.50	0.25	28 10 1984	447	990	0.30
731	4.50	0.25	28 10 1984	529	1032	0.30
732	4.50	0.25	28 10 1984	637	1100	0.30
733	4.50	0.25	28 10 1984	730	1153	0.20
734	4.50	0.25	28 10 1984	830	1213	0.49
735	4.50	0.25	28 10 1984	947	1290	0.96
736	4.50	0.25	28 10 1984	1002	1305	0.87
737	4.50	0.25	28 10 1984	1017	1320	0.77
738	4.50	0.25	28 10 1984	1032	1335	0.49
739	4.50	0.25	28 10 1984	1047	1350	0.87
740	4.50	0.25	28 10 1984	1103	1366	0.11
741	4.50	0.25	28 10 1984	1118	1381	0.49
742	4.50	0.25	28 10 1984	1133	1396	0.58
743	4.50	0.25	28 10 1984	1148	1411	0.58
744	4.50	0.25	28 10 1984	1203	1426	0.68
745	4.50	0.25	28 10 1984	1219	1442	0.39
746	4.50	0.25	28 10 1984	1234	1457	2.20
747	4.50	0.25	28 10 1984	1249	1472	1.06
748	4.50	0.25	28 10 1984	1304	1487	0.11
749	4.50	0.25	28 10 1984	1319	1502	0.58
750	4.50	0.25	28 10 1984	1334	1517	1.34

Sample number	Miles down-stream	Percent of width	Date			Time (hours)	Lapsed time (min)	Concentration (micrograms per liter)
			Day	Mo	Year			
751	4.50	0.25	28	10	1984	1350	1533	1.53
752	4.50	0.25	28	10	1984	1405	1548	0.77
753	4.50	0.25	28	10	1984	1420	1563	2.48
754	4.50	0.25	28	10	1984	1435	1578	0.58
755	4.50	0.25	28	10	1984	1450	1593	0.68
756	4.50	0.25	28	10	1984	1505	1608	3.05
757	4.50	0.25	28	10	1984	1521	1624	4.38
758	4.50	0.25	28	10	1984	1536	1639	2.58
759	4.50	0.25	28	10	1984	1617	1680	0.58
760	4.50	0.25	28	10	1984	1632	1695	0.39
761	4.50	0.25	28	10	1984	1647	1710	0.49
762	4.50	0.25	28	10	1984	1703	1726	0.68
763	4.50	0.25	28	10	1984	1718	1741	0.30
764	4.50	0.25	28	10	1984	1734	1757	1.91
765	4.50	0.25	28	10	1984	1749	1772	0.20
766	4.50	0.25	28	10	1984	1804	1787	0.58
767	4.50	0.25	28	10	1984	1820	1803	0.87
768	4.50	0.25	28	10	1984	1835	1818	0.49
769	4.50	0.25	28	10	1984	1850	1833	0.39
770	4.50	0.25	28	10	1984	1906	1849	21.45
771	4.50	0.25	28	10	1984	1921	1864	1.25
772	4.50	0.25	28	10	1984	1937	1880	0.58
773	4.50	0.25	28	10	1984	1952	1895	0.87
774	4.50	0.25	28	10	1984	2007	1910	0.68
775	4.50	0.25	28	10	1984	2023	1926	0.58
776	4.50	0.25	28	10	1984	2038	1941	1.72
777	4.50	0.25	28	10	1984	2053	1956	0.39
778	4.50	0.25	28	10	1984	2109	1972	0.77
779	4.50	0.25	28	10	1984	2124	1987	0.30
780	4.50	0.25	28	10	1984	2139	2002	0.68
781	4.50	0.25	28	10	1984	2155	2018	0.58
782	4.50	0.25	28	10	1984	2210	2033	0.87
783	4.50	0.25	28	10	1984	2337	2120	2.77
784	4.50	0.25	28	10	1984	2352	2135	3.05
785	4.50	0.25	29	10	1984	7	2150	2.96
786	4.50	0.25	29	10	1984	22	2165	2.10
787	4.50	0.25	29	10	1984	37	2180	4.10
788	4.50	0.25	29	10	1984	52	2195	5.52
789	4.50	0.25	29	10	1984	108	2211	5.33
790	4.50	0.25	29	10	1984	123	2226	6.47
791	4.50	0.25	29	10	1984	138	2241	4.10
792	4.50	0.25	29	10	1984	153	2256	3.15
793	4.50	0.25	29	10	1984	208	2271	2.86
794	4.50	0.25	29	10	1984	223	2286	3.05
795	4.50	0.25	29	10	1984	238	2301	4.57
796	4.50	0.25	29	10	1984	253	2316	5.90
797	4.50	0.25	29	10	1984	309	2332	7.85
798	4.50	0.25	29	10	1984	324	2347	11.91
799	4.50	0.25	29	10	1984	339	2362	11.91
800	4.50	0.25	29	10	1984	354	2377	12.98

Sample number	Miles down- stream	Percent of width	Date			Time (hours)	Lapsed time (min)	Concentration (micrograms per liter)
			Day	Mo	Year			
801	4.50	0.25	29	10	1984	409	2392	10.63
802	4.50	0.25	29	10	1984	424	2407	10.42
803	4.50	0.25	29	10	1984	439	2422	15.55
804	4.50	0.25	29	10	1984	455	2438	19.81
805	4.50	0.25	29	10	1984	510	2453	17.06
806	4.50	0.25	29	10	1984	525	2468	27.40
807	4.50	0.25	29	10	1984	537	2480	28.08
808	4.50	0.25	29	10	1984	643	2546	31.46
809	4.50	0.25	29	10	1984	740	2603	30.48
810	4.50	0.25	29	10	1984	845	2668	33.89
811	4.50	0.25	29	10	1984	941	2724	6.57
812	4.50	0.25	29	10	1984	1044	2787	0.87
813	4.50	0.25	29	10	1984	1148	2851	0.30
814	4.50	0.25	29	10	1984	1245	2908	0.11
815	4.50	0.25	29	10	1984	1342	2965	0.11
816	4.50	0.50	28	10	1984	354	937	0.30
817	4.50	0.50	28	10	1984	449	992	0.30
818	4.50	0.50	28	10	1984	530	1033	0.30
819	4.50	0.50	28	10	1984	636	1099	0.30
820	4.50	0.50	28	10	1984	731	1154	0.20
821	4.50	0.50	28	10	1984	831	1214	4.76
822	4.50	0.50	28	10	1984	940	1283	0.58
823	4.50	0.50	28	10	1984	954	1297	0.87
824	4.50	0.50	28	10	1984	1009	1312	0.49
825	4.50	0.50	28	10	1984	1023	1326	0.11
826	4.50	0.50	28	10	1984	1037	1340	0.01
827	4.50	0.50	28	10	1984	1052	1355	0.11
828	4.50	0.50	28	10	1984	1106	1369	0.11
829	4.50	0.50	28	10	1984	1120	1383	0.11
830	4.50	0.50	28	10	1984	1134	1397	0.11
831	4.50	0.50	28	10	1984	1149	1412	0.11
832	4.50	0.50	28	10	1984	1203	1426	0.30
833	4.50	0.50	28	10	1984	1217	1440	0.30
834	4.50	0.50	28	10	1984	1231	1454	0.11
835	4.50	0.50	28	10	1984	1246	1469	0.20
836	4.50	0.50	28	10	1984	1300	1483	0.11
837	4.50	0.50	28	10	1984	1314	1497	0.11
838	4.50	0.50	28	10	1984	1329	1512	0.11
839	4.50	0.50	28	10	1984	1343	1526	0.11
840	4.50	0.50	28	10	1984	1357	1540	0.11
841	4.50	0.50	28	10	1984	1411	1554	0.11
842	4.50	0.50	28	10	1984	1426	1569	0.01
843	4.50	0.50	28	10	1984	1440	1583	0.11
844	4.50	0.50	28	10	1984	1454	1597	0.11
845	4.50	0.50	28	10	1984	1509	1612	0.11
846	4.50	0.50	28	10	1984	1545	1648	0.39
847	4.50	0.50	28	10	1984	1559	1662	0.11
848	4.50	0.50	28	10	1984	1614	1677	0.11
849	4.50	0.50	28	10	1984	1629	1692	0.11
850	4.50	0.50	28	10	1984	1644	1707	0.58

Sample number	Miles down-stream	Percent of width	Date Day Mo Year	Time (hours)	Lapsed time (min)	Concentration (micrograms per liter)
851	4.50	0.50	28 10 1984	1659	1722	0.11
852	4.50	0.50	28 10 1984	1718	1741	4.38
853	4.50	0.50	28 10 1984	1728	1751	0.20
854	4.50	0.50	28 10 1984	1743	1766	0.20
855	4.50	0.50	28 10 1984	1757	1780	0.20
856	4.50	0.50	28 10 1984	1812	1795	4.38
857	4.50	0.50	28 10 1984	1827	1810	0.39
858	4.50	0.50	28 10 1984	1842	1825	0.20
859	4.50	0.50	28 10 1984	1857	1840	0.87
860	4.50	0.50	28 10 1984	1911	1854	6.75
861	4.50	0.50	28 10 1984	1926	1869	0.68
862	4.50	0.50	28 10 1984	1941	1884	1.25
863	4.50	0.50	28 10 1984	1956	1899	0.68
864	4.50	0.50	28 10 1984	2010	1913	0.39
865	4.50	0.50	28 10 1984	2025	1928	0.68
866	4.50	0.50	28 10 1984	2040	1943	0.68
867	4.50	0.50	28 10 1984	2055	1958	2.77
868	4.50	0.50	28 10 1984	2109	1972	2.39
869	4.50	0.50	28 10 1984	2124	1987	0.39
870	4.50	0.50	28 10 1984	2306	2089	9.77
871	4.50	0.50	28 10 1984	2319	2102	12.34
872	4.50	0.50	28 10 1984	2331	2114	4.28
873	4.50	0.50	28 10 1984	2334	2117	9.77
874	4.50	0.50	29 10 1984	2	2145	6.57
875	4.50	0.50	29 10 1984	17	2160	7.85
876	4.50	0.50	29 10 1984	31	2174	9.13
877	4.50	0.50	29 10 1984	46	2189	3.91
878	4.50	0.50	29 10 1984	46	2189	6.14
879	4.50	0.50	29 10 1984	100	2203	20.90
880	4.50	0.50	29 10 1984	100	2203	10.42
881	4.50	0.50	29 10 1984	129	2232	14.69
882	4.50	0.50	29 10 1984	144	2247	19.81
883	4.50	0.50	29 10 1984	158	2261	19.81
884	4.50	0.50	29 10 1984	212	2275	18.16
885	4.50	0.50	29 10 1984	227	2290	27.40
886	4.50	0.50	29 10 1984	241	2304	30.10
887	4.50	0.50	29 10 1984	256	2319	31.12
888	4.50	0.50	29 10 1984	310	2333	31.79
889	4.50	0.50	29 10 1984	325	2348	31.12
890	4.50	0.50	29 10 1984	339	2362	34.50
891	4.50	0.50	29 10 1984	353	2376	28.75
892	4.50	0.50	29 10 1984	408	2391	18.71
893	4.50	0.50	29 10 1984	422	2405	28.42
894	4.50	0.50	29 10 1984	437	2420	27.74
895	4.50	0.50	29 10 1984	538	2481	48.67
896	4.50	0.50	29 10 1984	644	2547	49.80
897	4.50	0.50	29 10 1984	741	2604	42.98
898	4.50	0.50	29 10 1984	846	2669	33.89
899	4.50	0.50	29 10 1984	942	2725	5.92
900	4.50	0.50	29 10 1984	945	2728	7.23

Sample number	Miles down-stream	Percent of width	Date			Time (hours)	Lapsed time (min)	Concentration (micrograms per liter)
			Day	Mo	Year			
901	4.50	0.50	29	10	1984	1033	2776	1.44
902	4.50	0.50	29	10	1984	1045	2788	0.77
903	4.50	0.50	29	10	1984	1149	2852	0.20
904	4.50	0.50	29	10	1984	1152	2855	0.68
905	4.50	0.50	29	10	1984	1246	2909	0.87
906	4.50	0.50	29	10	1984	1249	2912	0.11
907	4.50	0.50	29	10	1984	1343	2966	1.34
908	4.50	0.50	29	10	1984	1356	2979	0.01
909	4.50	0.75	28	10	1984	356	939	0.30
910	4.50	0.75	28	10	1984	450	993	0.30
911	4.50	0.75	28	10	1984	531	1034	0.30
912	4.50	0.75	28	10	1984	635	1098	0.30
913	4.50	0.75	28	10	1984	732	1155	0.20
914	4.50	0.75	28	10	1984	832	1215	2.77
915	4.50	0.75	28	10	1984	940	1283	1.91
916	4.50	0.75	28	10	1984	953	1296	1.06
917	4.50	0.75	28	10	1984	1006	1309	1.34
918	4.50	0.75	28	10	1984	1019	1322	0.96
919	4.50	0.75	28	10	1984	1032	1335	0.39
920	4.50	0.75	28	10	1984	1045	1348	1.34
921	4.50	0.75	28	10	1984	1058	1361	0.87
922	4.50	0.75	28	10	1984	1111	1374	0.77
923	4.50	0.75	28	10	1984	1124	1387	1.15
924	4.50	0.75	28	10	1984	1137	1400	3.05
925	4.50	0.75	28	10	1984	1150	1413	0.96
926	4.50	0.75	28	10	1984	1203	1426	0.77
927	4.50	0.75	28	10	1984	1216	1439	3.53
928	4.50	0.75	28	10	1984	1229	1452	5.61
929	4.50	0.75	28	10	1984	1242	1465	0.96
930	4.50	0.75	28	10	1984	1255	1478	1.91
931	4.50	0.75	28	10	1984	1308	1491	0.30
932	4.50	0.75	28	10	1984	1321	1504	0.49
933	4.50	0.75	28	10	1984	1334	1517	2.29
934	4.50	0.75	28	10	1984	1347	1530	0.58
935	4.50	0.75	28	10	1984	1400	1543	0.77
936	4.50	0.75	28	10	1984	1413	1556	0.39
937	4.50	0.75	28	10	1984	1426	1569	0.49
938	4.50	0.75	28	10	1984	1447	1590	0.49
939	4.50	0.75	28	10	1984	1501	1604	1.25
940	4.50	0.75	28	10	1984	1515	1618	0.11
941	4.50	0.75	28	10	1984	1528	1631	1.15
942	4.50	0.75	28	10	1984	1542	1645	2.77
943	4.50	0.75	28	10	1984	1556	1659	7.64
944	4.50	0.75	28	10	1984	1610	1673	0.30
945	4.50	0.75	28	10	1984	1624	1687	0.20
946	4.50	0.75	28	10	1984	1638	1701	0.11
947	4.50	0.75	28	10	1984	1652	1715	0.30
948	4.50	0.75	28	10	1984	1706	1729	2.29
949	4.50	0.75	28	10	1984	1720	1743	0.20
950	4.50	0.75	28	10	1984	1733	1756	0.49

Sample number	Miles down-stream	Percent of width	Date Day Mo Year	Time (hours)	Lapsed time (min)	Concentration (micrograms per liter)
951	4.50	0.75	28 10 1984	1747	1770	0.11
952	4.50	0.75	28 10 1984	1801	1784	0.30
953	4.50	0.75	28 10 1984	1815	1798	0.20
954	4.50	0.75	28 10 1984	1829	1812	0.11
955	4.50	0.75	28 10 1984	1843	1826	0.39
956	4.50	0.75	28 10 1984	1857	1840	1.06
957	4.50	0.75	28 10 1984	1911	1854	2.29
958	4.50	0.75	28 10 1984	1925	1868	0.39
959	4.50	0.75	28 10 1984	1939	1882	0.96
960	4.50	0.75	28 10 1984	1953	1896	0.87
961	4.50	0.75	28 10 1984	2006	1909	0.39
962	4.50	0.75	28 10 1984	2323	2106	14.48
963	4.50	0.75	28 10 1984	2337	2120	8.28
964	4.50	0.75	28 10 1984	2351	2134	7.85
965	4.50	0.75	29 10 1984	18	2161	12.56
966	4.50	0.75	29 10 1984	32	2175	15.34
967	4.50	0.75	29 10 1984	46	2189	14.48
968	4.50	0.75	29 10 1984	100	2203	14.87
969	4.50	0.75	29 10 1984	113	2216	15.42
970	4.50	0.75	29 10 1984	127	2230	13.77
971	4.50	0.75	29 10 1984	141	2244	12.13
972	4.50	0.75	29 10 1984	151	2254	15.42
973	4.50	0.75	29 10 1984	209	2272	15.97
974	4.50	0.75	29 10 1984	222	2285	27.40
975	4.50	0.75	29 10 1984	227	2290	32.13
976	4.50	0.75	29 10 1984	236	2299	27.74
977	4.50	0.75	29 10 1984	250	2313	29.43
978	4.50	0.75	29 10 1984	304	2327	31.12
979	4.50	0.75	29 10 1984	317	2340	32.81
980	4.50	0.75	29 10 1984	331	2354	30.10
981	4.50	0.75	29 10 1984	345	2368	19.81
982	4.50	0.75	29 10 1984	541	2484	29.35
983	4.50	0.75	29 10 1984	645	2548	44.12
984	4.50	0.75	29 10 1984	742	2605	32.75
985	4.50	0.75	29 10 1984	828	2651	39.57
986	4.50	0.75	29 10 1984	847	2670	35.03
987	4.50	0.75	29 10 1984	943	2726	16.19
988	4.50	0.75	29 10 1984	1046	2789	3.62
989	4.50	0.75	29 10 1984	1150	2853	1.34
990	4.50	0.75	29 10 1984	1247	2910	0.20
991	4.50	0.75	29 10 1984	1344	2967	0.11
992	4.50	0.75	29 10 1984	2229	3492	11.03
993	4.50	0.75	29 10 1984	2242	3505	16.52
994	4.50	0.75	29 10 1984	2256	3519	9.77
995	4.50	0.75	29 10 1984	2310	3533	12.13
996	5.00	0.25	28 10 1984	1035	1338	0.11
997	5.00	0.25	28 10 1984	1130	1393	0.30
998	5.00	0.25	28 10 1984	1230	1453	0.68
999	5.00	0.25	28 10 1984	1325	1508	0.39
1000	5.00	0.25	28 10 1984	2332	2115	0.49

Sample number	Miles down- stream	Percent of width	Date			Time (hours)	Lapsed time (min)	Concentration (micrograms per liter)
			Day	Mo	Year			
1001	5.00	0.25	29	10	1984	53	2196	0.01
1002	5.00	0.25	29	10	1984	53	2196	0.39
1003	5.00	0.25	29	10	1984	136	2239	2.01
1004	5.00	0.25	29	10	1984	231	2294	1.06
1005	5.00	0.25	29	10	1984	332	2355	0.39
1006	5.00	0.25	29	10	1984	430	2413	3.81
1007	5.00	0.25	29	10	1984	535	2478	6.18
1008	5.00	0.25	29	10	1984	638	2541	10.84
1009	5.00	0.25	29	10	1984	736	2599	14.48
1010	5.00	0.25	29	10	1984	842	2665	11.03
1011	5.00	0.25	29	10	1984	937	2720	31.79
1012	5.00	0.25	29	10	1984	1038	2781	2.48
1013	5.00	0.25	29	10	1984	1145	2848	2.39
1014	5.00	0.25	29	10	1984	1240	2903	0.30
1015	5.00	0.25	29	10	1984	1338	2961	0.39
1016	5.00	0.50	28	10	1984	1036	1339	0.39
1017	5.00	0.50	28	10	1984	1131	1394	1.34
1018	5.00	0.50	28	10	1984	1231	1454	0.58
1019	5.00	0.50	28	10	1984	1326	1509	3.15
1020	5.00	0.50	28	10	1984	2354	2137	0.49
1021	5.00	0.50	29	10	1984	54	2197	1.34
1022	5.00	0.50	29	10	1984	57	2200	0.58
1023	5.00	0.50	29	10	1984	157	2260	1.06
1024	5.00	0.50	29	10	1984	222	2285	2.20
1025	5.00	0.50	29	10	1984	232	2295	1.53
1026	5.00	0.50	29	10	1984	333	2356	1.25
1027	5.00	0.50	29	10	1984	536	2479	5.71
1028	5.00	0.50	29	10	1984	639	2542	12.77
1029	5.00	0.50	29	10	1984	737	2600	19.81
1030	5.00	0.50	29	10	1984	843	2666	36.86
1031	5.00	0.50	29	10	1984	938	2721	35.17
1032	5.00	0.50	29	10	1984	1039	2782	1.63
1033	5.00	0.50	29	10	1984	1146	2849	0.30
1034	5.00	0.50	29	10	1984	1241	2904	0.11
1035	5.00	0.50	29	10	1984	1339	2962	0.20
1036	5.00	0.75	28	10	1984	1037	1340	0.11
1037	5.00	0.75	28	10	1984	1132	1395	0.20
1038	5.00	0.75	28	10	1984	1232	1455	0.68
1039	5.00	0.75	28	10	1984	1327	1510	0.58
1040	5.00	0.75	28	10	1984	2335	2118	0.68
1041	5.00	0.75	29	10	1984	55	2198	0.87
1042	5.00	0.75	29	10	1984	138	2241	1.06
1043	5.00	0.75	29	10	1984	233	2296	4.10
1044	5.00	0.75	29	10	1984	335	2358	5.71
1045	5.00	0.75	29	10	1984	432	2415	6.94
1046	5.00	0.75	29	10	1984	451	2434	2.58
1047	5.00	0.75	29	10	1984	537	2480	10.63
1048	5.00	0.75	29	10	1984	640	2543	19.26
1049	5.00	0.75	29	10	1984	738	2601	20.35
1050	5.00	0.75	29	10	1984	844	2667	27.74

Sample number	Miles down-stream	Percent of width	Date Day Mo Year	Time (hours)	Lapsed time (min)	Concentration (micrograms per liter)
1051	5.00	0.75	29 10 1984	939	2722	34.16
1052	5.00	0.75	29 10 1984	1040	2783	3.53
1053	5.00	0.75	29 10 1984	1149	2852	0.49
1054	5.00	0.75	29 10 1984	1242	2905	0.20
1055	5.00	0.75	29 10 1984	1340	2963	0.11
1056	5.40	0.25	28 10 1984	217	840	0.49
1057	5.40	0.25	29 10 1984	47	2190	0.58
1058	5.40	0.25	29 10 1984	53	2196	0.01
1059	5.40	0.25	29 10 1984	137	2240	0.77
1060	5.40	0.25	29 10 1984	227	2290	1.34
1061	5.40	0.25	29 10 1984	328	2351	0.39
1062	5.40	0.25	29 10 1984	426	2409	0.49
1063	5.40	0.25	29 10 1984	532	2475	1.72
1064	5.40	0.25	29 10 1984	633	2536	1.25
1065	5.40	0.25	29 10 1984	732	2595	4.00
1066	5.40	0.25	29 10 1984	936	2719	27.40
1067	5.40	0.25	29 10 1984	940	2723	5.71
1068	5.40	0.25	29 10 1984	1036	2779	11.70
1069	5.40	0.25	29 10 1984	1136	2839	1.82
1070	5.40	0.50	29 10 1984	48	2191	3.05
1071	5.40	0.50	29 10 1984	132	2235	0.49
1072	5.40	0.50	29 10 1984	228	2291	2.01
1073	5.40	0.50	29 10 1984	329	2352	0.77
1074	5.40	0.50	29 10 1984	428	2411	2.58
1075	5.40	0.50	29 10 1984	533	2476	5.33
1076	5.40	0.50	29 10 1984	634	2537	5.90
1077	5.40	0.50	29 10 1984	733	2596	5.28
1078	5.40	0.50	29 10 1984	839	2662	9.56
1079	5.40	0.50	29 10 1984	935	2718	30.78
1080	5.40	0.50	29 10 1984	942	2725	32.47
1081	5.40	0.50	29 10 1984	1029	2772	9.35
1082	5.40	0.50	29 10 1984	1035	2778	8.49
1083	5.40	0.50	29 10 1984	1135	2838	1.15
1084	5.40	0.50	29 10 1984	1148	2851	0.96
1085	5.40	0.50	29 10 1984	1236	2899	0.30
1086	5.40	0.50	29 10 1984	1247	2910	0.20
1087	5.40	0.50	29 10 1984	1335	2958	0.01
1088	5.40	0.75	29 10 1984	50	2193	0.77
1089	5.40	0.75	29 10 1984	50	2193	0.58
1090	5.40	0.75	29 10 1984	134	2237	0.77
1091	5.40	0.75	29 10 1984	220	2283	0.01
1092	5.40	0.75	29 10 1984	230	2293	1.06
1093	5.40	0.75	29 10 1984	330	2353	1.63
1094	5.40	0.75	29 10 1984	429	2412	6.09
1095	5.40	0.75	29 10 1984	534	2477	0.49
1096	5.40	0.75	29 10 1984	635	2538	5.61
1097	5.40	0.75	29 10 1984	734	2597	4.43
1098	5.40	0.75	29 10 1984	821	2644	4.85
1099	5.40	0.75	29 10 1984	838	2661	8.49
1100	5.40	0.75	29 10 1984	934	2717	32.47

Sample number	Miles down- stream	Percent of width	Date			Time (hours)	Lapsed time (min)	Concentration (micrograms per liter)
			Day	Mo	Year			
1101	5.40	0.75	29	10	1984	1034	2777	14.69
1102	5.40	0.75	29	10	1984	1134	2837	1.44
1103	5.40	0.75	29	10	1984	1235	2898	0.39
1104	5.40	0.75	29	10	1984	1334	2957	0.11
1105	5.40	0.75	29	10	1984	1336	2959	0.11
1106	5.55	0.25	29	10	1984	1350	2973	0.11
1107	5.95	0.25	29	10	1984	213	2276	0.01
1108	5.95	0.25	29	10	1984	834	2657	0.49
1109	5.95	0.25	29	10	1984	930	2713	6.14
1110	5.95	0.25	29	10	1984	938	2721	10.20
1111	5.95	0.25	29	10	1984	1130	2833	9.56
1112	5.95	0.25	29	10	1984	1230	2893	1.82
1113	5.95	0.25	29	10	1984	1330	2953	2.39
1114	5.95	0.25	29	10	1984	1447	3030	0.11
1115	5.95	0.25	29	10	1984	1605	3108	0.20
1116	5.95	0.50	29	10	1984	835	2658	0.01
1117	5.95	0.50	29	10	1984	931	2714	11.03
1118	5.95	0.50	29	10	1984	939	2722	22.00
1119	5.95	0.50	29	10	1984	1022	2765	28.42
1120	5.95	0.50	29	10	1984	1031	2774	31.62
1121	5.95	0.50	29	10	1984	1131	2834	5.92
1122	5.95	0.50	29	10	1984	1146	2849	3.62
1123	5.95	0.50	29	10	1984	1231	2894	0.30
1124	5.95	0.50	29	10	1984	1245	2908	0.49
1125	5.95	0.50	29	10	1984	1331	2954	0.20
1126	5.95	0.50	29	10	1984	1448	3031	0.49
1127	5.95	0.50	29	10	1984	1606	3109	0.68
1128	5.95	0.75	29	10	1984	212	2275	0.11
1129	5.95	0.75	29	10	1984	836	2659	0.30
1130	5.95	0.75	29	10	1984	932	2715	12.68
1131	5.95	0.75	29	10	1984	1030	2773	19.81
1132	5.95	0.75	29	10	1984	1032	2775	33.89
1133	5.95	0.75	29	10	1984	1132	2835	4.85
1134	5.95	0.75	29	10	1984	1232	2895	0.68
1135	5.95	0.75	29	10	1984	1332	2955	0.30
1136	5.95	0.75	29	10	1984	1449	3032	0.39
1137	5.95	0.75	29	10	1984	1607	3110	0.30
1138	6.50	0.25	29	10	1984	812	2635	0.39
1139	6.50	0.25	29	10	1984	826	2649	0.39
1140	6.50	0.25	29	10	1984	841	2664	0.39
1141	6.50	0.25	29	10	1984	855	2678	0.11
1142	6.50	0.25	29	10	1984	910	2693	0.30
1143	6.50	0.25	29	10	1984	924	2707	0.30
1144	6.50	0.25	29	10	1984	939	2722	2.67
1145	6.50	0.25	29	10	1984	953	2736	3.81
1146	6.50	0.25	29	10	1984	1008	2751	6.18
1147	6.50	0.25	29	10	1984	1022	2765	11.03
1148	6.50	0.25	29	10	1984	1037	2780	13.77
1149	6.50	0.25	29	10	1984	1051	2794	15.42
1150	6.50	0.25	29	10	1984	1106	2809	17.61

Sample number	Miles down-stream	Percent of width	Date Day Mo Year	Time (hours)	Lapsed time (min)	Concentration (micrograms per liter)
1151	6.50	0.25	29 10 1984	1120	2823	19.81
1152	6.50	0.25	29 10 1984	1135	2838	15.97
1153	6.50	0.25	29 10 1984	1149	2852	13.23
1154	6.50	0.25	29 10 1984	1204	2967	9.56
1155	6.50	0.25	29 10 1984	1219	2882	4.43
1156	6.50	0.25	29 10 1984	1233	2896	5.71
1157	6.50	0.25	29 10 1984	1248	2911	4.43
1158	6.50	0.25	29 10 1984	1303	2926	3.62
1159	6.50	0.25	29 10 1984	1318	2941	2.96
1160	6.50	0.25	29 10 1984	1332	2955	2.20
1161	6.50	0.25	29 10 1984	1346	2969	1.25
1162	6.50	0.25	29 10 1984	1602	3105	0.20
1163	6.50	0.50	29 10 1984	757	2620	0.30
1164	6.50	0.50	29 10 1984	811	2634	0.39
1165	6.50	0.50	29 10 1984	826	2649	0.30
1166	6.50	0.50	29 10 1984	841	2664	0.30
1167	6.50	0.50	29 10 1984	855	2678	0.39
1168	6.50	0.50	29 10 1984	910	2693	0.30
1169	6.50	0.50	29 10 1984	924	2707	0.68
1170	6.50	0.50	29 10 1984	939	2722	1.53
1171	6.50	0.50	29 10 1984	953	2736	4.85
1172	6.50	0.50	29 10 1984	1008	2751	21.45
1173	6.50	0.50	29 10 1984	1023	2766	15.34
1174	6.50	0.50	29 10 1984	1037	2780	20.35
1175	6.50	0.50	29 10 1984	1052	2795	22.00
1176	6.50	0.50	29 10 1984	1106	2809	28.42
1177	6.50	0.50	29 10 1984	1121	2824	29.43
1178	6.50	0.50	29 10 1984	1135	2838	17.06
1179	6.50	0.50	29 10 1984	1150	2853	10.42
1180	6.50	0.50	29 10 1984	1204	2867	5.92
1181	6.50	0.50	29 10 1984	1219	2882	2.67
1182	6.50	0.50	29 10 1984	1233	2896	2.29
1183	6.50	0.50	29 10 1984	1248	2911	1.63
1184	6.50	0.50	29 10 1984	1302	2925	1.06
1185	6.50	0.50	29 10 1984	1317	2940	0.87
1186	6.50	0.50	29 10 1984	1331	2954	0.58
1187	6.50	0.50	29 10 1984	1347	2970	0.20
1188	6.50	0.50	29 10 1984	1603	3106	0.20
1189	6.50	0.50	29 10 1984	1743	3206	0.20
1190	6.50	0.75	29 10 1984	749	2612	0.39
1191	6.50	0.75	29 10 1984	803	2626	0.87
1192	6.50	0.75	29 10 1984	817	2640	0.39
1193	6.50	0.75	29 10 1984	818	2641	0.30
1194	6.50	0.75	29 10 1984	832	2655	0.20
1195	6.50	0.75	29 10 1984	847	2670	0.39
1196	6.50	0.75	29 10 1984	901	2684	2.39
1197	6.50	0.75	29 10 1984	916	2699	0.96
1198	6.50	0.75	29 10 1984	930	2713	2.01
1199	6.50	0.75	29 10 1984	945	2728	6.78
1200	6.50	0.75	29 10 1984	959	2742	8.92

Sample number	Miles down- stream	Percent of width	Date			Time (hours)	Lapsed time (min)	Concentration (micrograms per liter)
			Day	Mo	Year			
1201	6.50	0.75	29	10	1984	1014	2757	18.16
1202	6.50	0.75	29	10	1984	1029	2772	28.75
1203	6.50	0.75	29	10	1984	1043	2786	28.75
1204	6.50	0.75	29	10	1984	1058	2801	32.47
1205	6.50	0.75	29	10	1984	1112	2815	30.78
1206	6.50	0.75	29	10	1984	1127	2830	22.00
1207	6.50	0.75	29	10	1984	1141	2844	9.56
1208	6.50	0.75	29	10	1984	1156	2859	11.49
1209	6.50	0.75	29	10	1984	1210	2873	9.35
1210	6.50	0.75	29	10	1984	1224	2887	6.99
1211	6.50	0.75	29	10	1984	1239	2902	6.57
1212	6.50	0.75	29	10	1984	1253	2916	4.85
1213	6.50	0.75	29	10	1984	1308	2931	3.72
1214	6.50	0.75	29	10	1984	1323	2946	2.86
1215	6.50	0.75	29	10	1984	1604	3107	0.20
1216	7.00	0.25	29	10	1984	1559	3102	0.20
1217	7.00	0.25	29	10	1984	1705	3168	0.01
1218	7.00	0.25	29	10	1984	1756	3219	0.11
1219	7.00	0.50	29	10	1984	933	2716	0.39
1220	7.00	0.50	29	10	1984	1020	2763	3.24
1221	7.00	0.50	29	10	1984	1143	2846	31.46
1222	7.00	0.50	29	10	1984	1243	2906	3.24
1223	7.00	0.50	29	10	1984	1600	3103	0.30
1224	7.00	0.50	29	10	1984	1706	3169	0.01
1225	7.00	0.50	29	10	1984	1757	3220	0.11
1226	7.00	0.75	29	10	1984	1601	3104	0.30
1227	7.00	0.75	29	10	1984	1707	3170	0.11
1228	7.00	0.75	29	10	1984	1757	3220	0.11
1229	7.50	0.25	29	10	1984	1556	3099	0.58
1230	7.50	0.25	29	10	1984	1702	3165	1.25
1231	7.50	0.25	29	10	1984	1753	3216	0.11
1232	7.50	0.50	29	10	1984	1344	2967	1.63
1233	7.50	0.50	29	10	1984	1557	3100	0.20
1234	7.50	0.50	29	10	1984	1703	3166	0.01
1235	7.50	0.50	29	10	1984	1740	3203	1.25
1236	7.50	0.50	29	10	1984	1754	3217	0.01
1237	7.50	0.75	29	10	1984	1558	3101	0.30
1238	7.50	0.75	29	10	1984	1704	3167	0.11
1239	7.50	0.75	29	10	1984	1755	3218	0.96
1240	7.90	0.25	29	10	1984	1553	3096	2.10
1241	7.90	0.25	29	10	1984	1659	3162	0.39
1242	7.90	0.25	29	10	1984	1749	3212	0.39
1243	7.90	0.50	29	10	1984	1138	2841	12.68
1244	7.90	0.50	29	10	1984	1240	2903	25.94
1245	7.90	0.50	29	10	1984	1554	3097	0.58
1246	7.90	0.50	29	10	1984	1700	3163	0.49
1247	7.90	0.50	29	10	1984	1750	3213	0.11
1248	7.90	0.75	29	10	1984	1555	3098	0.39
1249	7.90	0.75	29	10	1984	1701	3164	0.01
1250	7.90	0.75	29	10	1984	1751	3214	0.11

Sample number	Miles down-stream	Percent of width	Date			Time (hours)	Lapsed time (min)	Concentration (micrograms per liter)
			Day	Mo	Year			
1251	8.55	0.25	29	10	1984	1550	3093	2.96
1252	8.55	0.25	29	10	1984	1656	3159	0.68
1253	8.55	0.25	29	10	1984	1745	3208	0.20
1254	8.55	0.25	29	10	1984	2009	3352	0.00
1255	8.55	0.25	29	10	1984	2201	3464	0.11
1256	8.55	0.50	29	10	1984	1340	2963	16.52
1257	8.55	0.50	29	10	1984	1551	3094	1.15
1258	8.55	0.50	29	10	1984	1657	3160	0.68
1259	8.55	0.50	29	10	1984	1736	3199	0.20
1260	8.55	0.50	29	10	1984	1746	3209	0.49
1261	8.55	0.50	29	10	1984	2008	3351	0.01
1262	8.55	0.50	29	10	1984	2202	3465	0.01
1263	8.55	0.50	29	10	1984	2204	3467	0.01
1264	8.55	0.75	29	10	1984	1552	3095	1.25
1265	8.55	0.75	29	10	1984	1658	3161	1.06
1266	8.55	0.75	29	10	1984	1747	3210	0.87
1267	8.55	0.75	29	10	1984	2006	3349	0.01
1268	8.55	0.75	29	10	1984	2203	3466	0.01
1269	9.25	0.25	29	10	1984	1547	3090	4.85
1270	9.25	0.25	29	10	1984	1651	3154	1.72
1271	9.25	0.25	29	10	1984	1742	3205	0.30
1272	9.25	0.25	29	10	1984	2011	3354	0.01
1273	9.25	0.25	29	10	1984	2155	3458	0.01
1274	9.25	0.50	29	10	1984	1135	2838	0.39
1275	9.25	0.50	29	10	1984	1237	2900	0.49
1276	9.25	0.50	29	10	1984	1548	3091	4.64
1277	9.25	0.50	29	10	1984	1652	3155	0.77
1278	9.25	0.50	29	10	1984	1743	3206	0.20
1279	9.25	0.50	29	10	1984	1945	3328	0.20
1280	9.25	0.50	29	10	1984	2012	3355	0.01
1281	9.25	0.50	29	10	1984	2156	3459	0.01
1282	9.25	0.50	29	10	1984	2202	3465	0.00
1283	9.25	0.75	29	10	1984	1549	3092	4.43
1284	9.25	0.75	29	10	1984	1653	3156	0.87
1285	9.25	0.75	29	10	1984	1744	3207	0.20
1286	9.25	0.75	29	10	1984	2023	3366	0.01
1287	9.25	0.75	29	10	1984	2157	3460	0.87
1288	9.90	0.25	29	10	1984	1544	3087	9.35
1289	9.90	0.25	29	10	1984	1646	3149	3.34
1290	9.90	0.25	29	10	1984	1738	3201	0.77
1291	9.90	0.25	29	10	1984	2008	3351	0.11
1292	9.90	0.25	29	10	1984	2152	3455	0.01
1293	9.90	0.50	29	10	1984	1338	2961	1.91
1294	9.90	0.50	29	10	1984	1545	3088	9.39
1295	9.90	0.50	29	10	1984	1647	3150	4.38
1296	9.90	0.50	29	10	1984	1733	3196	0.49
1297	9.90	0.50	29	10	1984	1739	3202	0.49
1298	9.90	0.50	29	10	1984	2009	3352	1.25
1299	9.90	0.50	29	10	1984	2153	3456	0.01
1300	9.90	0.50	29	10	1984	2159	3462	0.00

Sample number	Miles down-stream	Percent of width	Date			Time (hours)	Lapsed time (min)	Concentration (micrograms per liter)
			Day	Mo	Year			
1301	9.90	0.75	29	10	1984	1546	3089	11.27
1302	9.90	0.75	29	10	1984	1648	3151	3.15
1303	9.90	0.75	29	10	1984	1740	3203	0.49
1304	9.90	0.75	29	10	1984	2010	3353	0.01
1305	9.90	0.75	29	10	1984	2153	3456	0.20
1306	10.30	0.25	29	10	1984	1541	3084	17.61
1307	10.30	0.25	29	10	1984	1642	3145	6.35
1308	10.30	0.25	29	10	1984	1735	3198	2.39
1309	10.30	0.25	29	10	1984	2006	3349	0.11
1310	10.30	0.25	29	10	1984	2148	3451	0.11
1311	10.30	0.50	29	10	1984	1234	2897	0.11
1312	10.30	0.50	29	10	1984	1542	3085	15.97
1313	10.30	0.50	29	10	1984	1643	3146	6.57
1314	10.30	0.50	29	10	1984	1736	3199	1.34
1315	10.30	0.50	29	10	1984	1942	3325	0.30
1316	10.30	0.50	29	10	1984	2007	3350	0.11
1317	10.30	0.50	29	10	1984	2149	3452	0.01
1318	10.30	0.50	29	10	1984	2158	3461	0.00
1319	10.30	0.75	29	10	1984	1543	3086	18.16
1320	10.30	0.75	29	10	1984	1645	3148	6.14
1321	10.30	0.75	29	10	1984	1737	3200	1.15
1322	10.30	0.75	29	10	1984	2008	3351	0.11
1323	10.30	0.75	29	10	1984	2149	3452	0.68
1324	10.85	0.25	29	10	1984	1538	3081	13.23
1325	10.85	0.25	29	10	1984	1639	3142	9.94
1326	10.85	0.25	29	10	1984	1730	3193	4.64
1327	10.85	0.25	29	10	1984	2003	3346	0.30
1328	10.85	0.25	29	10	1984	2145	3448	0.01
1329	10.85	0.50	29	10	1984	1335	2958	0.01
1330	10.85	0.50	29	10	1984	1539	3082	18.71
1331	10.85	0.50	29	10	1984	1623	3126	9.94
1332	10.85	0.50	29	10	1984	1640	3143	10.42
1333	10.85	0.50	29	10	1984	1727	3190	3.72
1334	10.85	0.50	29	10	1984	1731	3194	2.86
1335	10.85	0.50	29	10	1984	2004	3347	0.11
1336	10.85	0.50	29	10	1984	2145	3448	0.00
1337	10.85	0.50	29	10	1984	2156	3459	0.11
1338	10.85	0.75	29	10	1984	1540	3083	15.76
1339	10.85	0.75	29	10	1984	1641	3144	9.94
1340	10.85	0.75	29	10	1984	1733	3196	3.53
1341	10.85	0.75	29	10	1984	2005	3348	0.11
1342	10.85	0.75	29	10	1984	2146	3449	0.01
1343	11.50	0.25	29	10	1984	2000	3343	0.30
1344	11.50	0.25	29	10	1984	2140	3443	0.01
1345	11.50	0.50	29	10	1984	1620	3123	15.42
1346	11.50	0.50	29	10	1984	2001	3344	0.30
1347	11.50	0.50	29	10	1984	2141	3444	0.00
1348	11.50	0.50	29	10	1984	2153	3456	0.01
1349	11.50	0.75	29	10	1984	2002	3345	0.20
1350	11.50	0.75	29	10	1984	2142	3445	0.01

Sample number	Miles down- stream	Percent of width	Date			Time (hours)	Lapsed time (min)	Concentration (micrograms per liter)
			Day	Mo	Year			
1351	12.05	0.25	29	10	1984	1957	3340	0.39
1352	12.05	0.25	29	10	1984	2130	3433	1.44
1353	12.05	0.25	29	10	1984	2341	3564	0.01
1354	12.05	0.50	29	10	1984	1722	3185	12.68
1355	12.05	0.50	29	10	1984	1958	3341	1.72
1356	12.05	0.50	29	10	1984	2131	3434	0.58
1357	12.05	0.50	29	10	1984	2151	3454	0.01
1358	12.05	0.50	29	10	1984	2151	3454	0.58
1359	12.05	0.50	29	10	1984	2342	3565	0.01
1360	12.05	0.75	29	10	1984	1959	3342	0.58
1361	12.05	0.75	29	10	1984	2132	3435	0.58
1362	12.05	0.75	29	10	1984	2344	3567	0.39
1363	12.40	0.25	29	10	1984	1950	3333	1.25
1364	12.40	0.25	29	10	1984	2123	3426	0.01
1365	12.40	0.25	29	10	1984	2338	3561	0.01
1366	12.40	0.25	30	10	1984	812	4075	0.11
1367	12.40	0.25	30	10	1984	1039	4222	0.20
1368	12.40	0.50	29	10	1984	1924	3307	0.77
1369	12.40	0.50	29	10	1984	1951	3334	0.68
1370	12.40	0.50	29	10	1984	2124	3427	0.00
1371	12.40	0.50	29	10	1984	2149	3452	0.01
1372	12.40	0.50	29	10	1984	2340	3563	0.77
1373	12.40	0.50	30	10	1984	813	4076	0.49
1374	12.40	0.50	30	10	1984	1032	4215	0.11
1375	12.40	0.75	29	10	1984	1952	3335	1.15
1376	12.40	0.75	29	10	1984	2125	3428	0.00
1377	12.40	0.75	29	10	1984	2340	3563	0.01
1378	12.40	0.75	30	10	1984	814	4077	0.01
1379	12.40	0.75	30	10	1984	1033	4216	0.11
1380	13.05	0.25	29	10	1984	1654	3157	3.34
1381	13.05	0.25	29	10	1984	1709	3172	7.23
1382	13.05	0.25	29	10	1984	1724	3187	10.63
1383	13.05	0.25	29	10	1984	1739	3202	16.62
1384	13.05	0.25	29	10	1984	1754	3217	17.48
1385	13.05	0.25	29	10	1984	1809	3232	15.12
1386	13.05	0.25	29	10	1984	1824	3247	13.20
1387	13.05	0.25	29	10	1984	1839	3262	9.13
1388	13.05	0.25	29	10	1984	1854	3277	8.06
1389	13.05	0.25	29	10	1984	1909	3292	5.92
1390	13.05	0.25	29	10	1984	1924	3307	4.47
1391	13.05	0.25	29	10	1984	1939	3322	4.19
1392	13.05	0.25	29	10	1984	1954	3337	3.05
1393	13.05	0.25	29	10	1984	2009	3352	2.20
1394	13.05	0.25	29	10	1984	2024	3367	1.44
1395	13.05	0.25	29	10	1984	2039	3382	1.06
1396	13.05	0.25	29	10	1984	2054	3397	0.58
1397	13.05	0.25	29	10	1984	2109	3412	0.58
1398	13.05	0.25	29	10	1984	2124	3427	0.39
1399	13.05	0.25	29	10	1984	2139	3442	3.15
1400	13.05	0.25	29	10	1984	2154	3457	0.30

Sample number	Miles down- stream	Percent of width	Date			Time (hours)	Lapsed time (min)	Concentration (micrograms per liter)
			Day	Mo	Year			
1401	13.05	0.25	29	10	1984	2209	3472	0.20
1402	13.05	0.25	29	10	1984	2224	3487	0.30
1403	13.05	0.25	29	10	1984	2239	3502	1.63
1404	13.05	0.25	29	10	1984	2335	3558	0.11
1405	13.05	0.25	30	10	1984	809	4072	0.20
1406	13.05	0.25	30	10	1984	1022	4205	0.20
1407	13.05	0.50	29	10	1984	1703	3166	8.49
1408	13.05	0.50	29	10	1984	1718	3181	11.58
1409	13.05	0.50	29	10	1984	1718	3181	12.77
1410	13.05	0.50	29	10	1984	1733	3196	15.55
1411	13.05	0.50	29	10	1984	1748	3211	18.33
1412	13.05	0.50	29	10	1984	1803	3226	11.49
1413	13.05	0.50	29	10	1984	1818	3241	12.13
1414	13.05	0.50	29	10	1984	1833	3256	63.89
1415	13.05	0.50	29	10	1984	1833	3256	6.14
1416	13.05	0.50	29	10	1984	1848	3271	5.71
1417	13.05	0.50	29	10	1984	1903	3286	4.76
1418	13.05	0.50	29	10	1984	1918	3301	3.53
1419	13.05	0.50	29	10	1984	1933	3316	2.86
1420	13.05	0.50	29	10	1984	1948	3331	1.82
1421	13.05	0.50	29	10	1984	2003	3346	1.34
1422	13.05	0.50	29	10	1984	2018	3361	0.58
1423	13.05	0.50	29	10	1984	2033	3376	0.58
1424	13.05	0.50	29	10	1984	2048	3391	0.30
1425	13.05	0.50	29	10	1984	2103	3406	0.77
1426	13.05	0.50	29	10	1984	2118	3421	0.11
1427	13.05	0.50	29	10	1984	2133	3436	0.11
1428	13.05	0.50	29	10	1984	2147	3450	0.01
1429	13.05	0.50	29	10	1984	2148	3451	0.30
1430	13.05	0.50	29	10	1984	2203	3466	2.29
1431	13.05	0.50	29	10	1984	2218	3481	0.30
1432	13.05	0.50	29	10	1984	2233	3496	1.15
1433	13.05	0.50	29	10	1984	2248	3511	0.11
1434	13.05	0.50	29	10	1984	2336	3559	0.00
1435	13.05	0.50	30	10	1984	810	4073	0.30
1436	13.05	0.50	30	10	1984	1023	4206	0.39
1437	13.05	0.50	30	10	1984	1054	4237	0.20
1438	13.05	0.50	30	10	1984	1208	4311	0.20
1439	13.05	0.75	29	10	1984	1716	3179	6.14
1440	13.05	0.75	29	10	1984	1731	3194	13.41
1441	13.05	0.75	29	10	1984	1746	3209	15.55
1442	13.05	0.75	29	10	1984	1801	3224	14.05
1443	13.05	0.75	29	10	1984	1813	3236	11.70
1444	13.05	0.75	29	10	1984	1831	3254	7.42
1445	13.05	0.75	29	10	1984	1846	3269	7.42
1446	13.05	0.75	29	10	1984	1901	3284	4.85
1447	13.05	0.75	29	10	1984	1916	3299	4.76
1448	13.05	0.75	29	10	1984	1931	3314	5.42
1449	13.05	0.75	29	10	1984	1946	3329	1.82
1450	13.05	0.75	29	10	1984	2001	3344	1.15

Sample number	Miles down- stream	Percent of width	Date			Time (hours)	Lapsed time (min)	Concentration (micrograms per liter)
			Day	Mo	Year			
1451	13.05	0.75	29	10	1984	2016	3359	1.63
1452	13.05	0.75	29	10	1984	2031	3374	0.96
1453	13.05	0.75	29	10	1984	2046	3389	0.20
1454	13.05	0.75	29	10	1984	2101	3404	1.25
1455	13.05	0.75	29	10	1984	2116	3419	1.91
1456	13.05	0.75	29	10	1984	2131	3434	0.11
1457	13.05	0.75	29	10	1984	2146	3449	0.11
1458	13.05	0.75	29	10	1984	2201	3464	0.11
1459	13.05	0.75	29	10	1984	2216	3479	3.15
1460	13.05	0.75	29	10	1984	2231	3494	0.11
1461	13.05	0.75	29	10	1984	2246	3509	0.11
1462	13.05	0.75	29	10	1984	2337	3560	0.01
1463	13.05	0.75	30	10	1984	124	3667	0.20
1464	13.05	0.75	30	10	1984	811	4074	0.20
1465	13.50	0.25	29	10	1984	1937	3320	4.64
1466	13.50	0.25	29	10	1984	2115	3418	0.49
1467	13.50	0.25	29	10	1984	2331	3554	0.11
1468	13.50	0.25	30	10	1984	805	4068	0.20
1469	13.50	0.25	30	10	1984	1018	4201	0.30
1470	13.50	0.25	30	10	1984	1320	4383	0.01
1471	13.50	0.25	30	10	1984	1509	4492	0.01
1472	13.50	0.50	29	10	1984	1918	3301	10.48
1473	13.50	0.50	29	10	1984	1938	3321	3.14
1474	13.50	0.50	29	10	1984	2116	3419	0.20
1475	13.50	0.50	29	10	1984	2332	3555	0.11
1476	13.50	0.50	30	10	1984	806	4069	0.11
1477	13.50	0.50	30	10	1984	1019	4202	0.11
1478	13.50	0.50	30	10	1984	1321	4384	0.01
1479	13.50	0.50	30	10	1984	1510	4493	0.30
1480	13.50	0.75	29	10	1984	1939	3322	5.04
1481	13.50	0.75	29	10	1984	2117	3420	0.11
1482	13.50	0.75	29	10	1984	2333	3556	0.39
1483	13.50	0.75	30	10	1984	807	4070	0.11
1484	13.50	0.75	30	10	1984	1020	4203	0.11
1485	13.50	0.75	30	10	1984	1322	4385	0.01
1486	13.50	0.75	30	10	1984	1511	4494	0.01
1487	13.50	0.25	29	10	1984	*	17645	33.89
1488	13.90	0.25	29	10	1984	2106	3409	2.39
1489	13.90	0.25	29	10	1984	2116	3419	0.49
1490	13.90	0.50	29	10	1984	2107	3410	1.25
1491	13.90	0.50	29	10	1984	2113	3416	0.20
1492	13.90	0.50	29	10	1984	2142	3445	0.11
1493	13.90	0.50	29	10	1984	2143	3446	0.01
1494	13.90	0.50	30	10	1984	1052	4235	0.49
1495	13.90	0.50	30	10	1984	1206	4309	0.11
1496	13.90	0.75	29	10	1984	2108	3411	0.87
1497	13.90	0.75	29	10	1984	2114	3417	0.58
1498	14.30	0.25	29	10	1984	2057	3400	3.24
1499	14.30	0.25	29	10	1984	2327	3550	0.20
1500	14.30	0.25	30	10	1984	801	4064	0.30

Sample number	Miles down-stream	Percent of width	Date			Time (hours)	Lapsed time (min)	Concentration (micrograms per liter)
			Day	Mo	Year			
1501	14.30	0.25	30	10	1984	1014	4197	0.11
1502	14.30	0.25	30	10	1984	1315	4378	0.30
1503	14.30	0.25	30	10	1984	1505	4488	0.01
1504	14.30	0.50	29	10	1984	1909	3292	12.68
1505	14.30	0.50	29	10	1984	2058	3401	1.72
1506	14.30	0.50	29	10	1984	2138	3441	0.49
1507	14.30	0.50	29	10	1984	2328	3551	0.20
1508	14.30	0.50	30	10	1984	802	4065	0.30
1509	14.30	0.50	30	10	1984	1015	4198	0.20
1510	14.30	0.50	30	10	1984	1316	4379	0.00
1511	14.30	0.50	30	10	1984	1506	4489	0.00
1512	14.30	0.75	29	10	1984	2059	3402	1.91
1513	14.30	0.75	29	10	1984	2329	3552	0.01
1514	14.30	0.75	30	10	1984	803	4066	0.30
1515	14.30	0.75	30	10	1984	1016	4199	0.20
1516	14.30	0.75	30	10	1984	1317	4380	1.06
1517	14.30	0.75	30	10	1984	1507	4490	0.01
1518	14.80	0.25	29	10	1984	2324	3547	0.77
1519	14.80	0.25	30	10	1984	137	3680	1.82
1520	14.80	0.25	30	10	1984	650	3993	0.39
1521	14.80	0.25	30	10	1984	757	4060	0.49
1522	14.80	0.25	30	10	1984	1312	4375	0.77
1523	14.80	0.25	30	10	1984	1502	4485	0.01
1524	14.80	0.50	29	10	1984	2136	3439	0.87
1525	14.80	0.50	29	10	1984	2325	3548	0.30
1526	14.80	0.50	30	10	1984	138	3681	1.06
1527	14.80	0.50	30	10	1984	557	3940	0.58
1528	14.80	0.50	30	10	1984	758	4061	0.58
1529	14.80	0.50	30	10	1984	1012	4195	0.30
1530	14.80	0.50	30	10	1984	1049	4232	0.20
1531	14.80	0.50	30	10	1984	1203	4306	0.11
1532	14.80	0.50	30	10	1984	1313	4376	0.11
1533	14.80	0.50	30	10	1984	1503	4486	0.77
1534	14.80	0.75	29	10	1984	2325	3548	0.58
1535	14.80	0.75	30	10	1984	139	3682	2.67
1536	14.80	0.75	30	10	1984	558	3941	0.39
1537	14.80	0.75	30	10	1984	759	4062	0.49
1538	14.80	0.75	30	10	1984	1013	4196	0.39
1539	14.80	0.75	30	10	1984	1314	4377	0.11
1540	14.80	0.75	30	10	1984	1504	4487	0.01
1541	15.40	0.25	29	10	1984	2320	3543	1.06
1542	15.40	0.25	30	10	1984	133	3676	2.67
1543	15.40	0.25	30	10	1984	552	3935	1.91
1544	15.40	0.25	30	10	1984	753	4056	1.72
1545	15.40	0.25	30	10	1984	1007	4190	1.63
1546	15.40	0.25	30	10	1984	1309	4372	0.49
1547	15.40	0.25	30	10	1984	1459	4482	0.01
1548	15.40	0.50	29	10	1984	2133	3436	2.96
1549	15.40	0.50	29	10	1984	2321	3544	0.96
1550	15.40	0.50	30	10	1984	134	3677	2.96

Sample number	Miles down-stream	Percent of width	Date Day Mo Year	Time (hours)	Lapsed time (min)	Concentration (micrograms per liter)
1551	15.40	0.50	30 10 1984	438	3861	1.63
1552	15.40	0.50	30 10 1984	553	3936	1.44
1553	15.40	0.50	30 10 1984	754	4057	1.72
1554	15.40	0.50	30 10 1984	1008	4191	1.63
1555	15.40	0.50	30 10 1984	1310	4373	0.49
1556	15.40	0.50	30 10 1984	1500	4483	1.15
1557	15.40	0.75	29 10 1984	2322	3545	0.96
1558	15.40	0.75	30 10 1984	134	3677	3.24
1559	15.40	0.75	30 10 1984	553	3936	1.34
1560	15.40	0.75	30 10 1984	755	4058	1.82
1561	15.40	0.75	30 10 1984	1009	4192	1.53
1562	15.40	0.75	30 10 1984	1311	4374	0.01
1563	15.40	0.75	30 10 1984	1501	4484	0.87
1564	16.00	0.25	29 10 1984	2317	3540	2.29
1565	16.00	0.25	30 10 1984	130	3673	7.51
1566	16.00	0.25	30 10 1984	549	3932	3.24
1567	16.00	0.25	30 10 1984	749	4052	3.81
1568	16.00	0.25	30 10 1984	1003	4186	3.43
1569	16.00	0.25	30 10 1984	1303	4366	0.30
1570	16.00	0.25	30 10 1984	1455	4478	0.01
1571	16.00	0.25	30 10 1984	1709	4612	0.01
1572	16.00	0.50	29 10 1984	2132	3435	5.80
1573	16.00	0.50	29 10 1984	2313	3536	2.29
1574	16.00	0.50	30 10 1984	130	3673	5.50
1575	16.00	0.50	30 10 1984	547	3930	2.96
1576	16.00	0.50	30 10 1984	750	4053	3.91
1577	16.00	0.50	30 10 1984	1004	4187	3.43
1578	16.00	0.50	30 10 1984	1047	4230	1.63
1579	16.00	0.50	30 10 1984	1200	4303	0.30
1580	16.00	0.50	30 10 1984	1304	4367	0.11
1581	16.00	0.50	30 10 1984	1456	4479	0.01
1582	16.00	0.50	30 10 1984	1710	4613	0.01
1583	16.00	0.75	29 10 1984	2319	3542	2.86
1584	16.00	0.75	30 10 1984	132	3675	7.23
1585	16.00	0.75	30 10 1984	550	3933	2.86
1586	16.00	0.75	30 10 1984	751	4054	2.96
1587	16.00	0.75	30 10 1984	1005	4188	3.15
1588	16.00	0.75	30 10 1984	1305	4368	0.11
1589	16.00	0.75	30 10 1984	1457	4480	0.11
1590	16.00	0.75	30 10 1984	1711	4614	0.01
1591	16.60	0.25	29 10 1984	2313	3536	9.99
1592	16.60	0.25	30 10 1984	126	3669	9.35
1593	16.60	0.25	30 10 1984	546	3929	6.66
1594	16.60	0.25	30 10 1984	745	4048	6.57
1595	16.60	0.25	30 10 1984	959	4182	5.92
1596	16.60	0.25	30 10 1984	1300	4363	0.30
1597	16.60	0.25	30 10 1984	1452	4475	0.68
1598	16.60	0.25	30 10 1984	1706	4609	0.39
1599	16.60	0.50	29 10 1984	2130	3433	12.13
1600	16.60	0.50	29 10 1984	2313	3536	5.07

Sample number	Miles down- stream	Percent of width	Date			Time (hours)	Lapsed time (min)	Concentration (micrograms per liter)
			Day	Mo	Year			
1601	16.60	0.50	30	10	1984	121	3664	10.20
1602	16.60	0.50	30	10	1984	416	3839	8.49
1603	16.60	0.50	30	10	1984	546	3929	6.66
1604	16.60	0.50	30	10	1984	746	4049	6.57
1605	16.60	0.50	30	10	1984	1000	4183	5.50
1606	16.60	0.50	30	10	1984	1301	4364	0.20
1607	16.60	0.50	30	10	1984	1453	4476	0.11
1608	16.60	0.50	30	10	1984	1707	4610	0.00
1609	16.60	0.75	29	10	1984	2314	3537	7.42
1610	16.60	0.75	30	10	1984	125	3668	8.06
1611	16.60	0.75	30	10	1984	547	3930	6.09
1612	16.60	0.75	30	10	1984	747	4050	5.28
1613	16.60	0.75	30	10	1984	1001	4184	6.35
1614	16.60	0.75	30	10	1984	1302	4365	0.20
1615	16.60	0.75	30	10	1984	1454	4477	0.00
1616	16.60	0.75	30	10	1984	1708	4611	0.01
1617	17.20	0.25	30	10	1984	126	3669	11.27
1618	17.20	0.25	30	10	1984	541	3924	6.78
1619	17.20	0.25	30	10	1984	740	4043	7.42
1620	17.20	0.25	30	10	1984	955	4178	8.06
1621	17.20	0.25	30	10	1984	1256	4359	1.82
1622	17.20	0.25	30	10	1984	1449	4472	0.11
1623	17.20	0.25	30	10	1984	1703	4606	0.00
1624	17.20	0.25	30	10	1984	1913	4736	0.96
1625	17.20	0.50	30	10	1984	121	3664	11.49
1626	17.20	0.50	30	10	1984	542	3925	6.78
1627	17.20	0.50	30	10	1984	741	4044	7.64
1628	17.20	0.50	30	10	1984	956	4179	6.78
1629	17.20	0.50	30	10	1984	1043	4226	7.64
1630	17.20	0.50	30	10	1984	1200	4303	2.96
1631	17.20	0.50	30	10	1984	1257	4360	0.68
1632	17.20	0.50	30	10	1984	1450	4473	0.01
1633	17.20	0.50	30	10	1984	1635	4578	0.00
1634	17.20	0.50	30	10	1984	1704	4607	0.30
1635	17.20	0.50	30	10	1984	1914	4737	0.00
1636	17.20	0.50	30	10	1984	2327	4990	0.00
1637	17.20	0.75	30	10	1984	123	3666	11.27
1638	17.20	0.75	30	10	1984	543	3926	6.57
1639	17.20	0.75	30	10	1984	742	4045	9.56
1640	17.20	0.75	30	10	1984	957	4180	6.99
1641	17.20	0.75	30	10	1984	1258	4361	0.39
1642	17.20	0.75	30	10	1984	1451	4474	0.11
1643	17.20	0.75	30	10	1984	1705	4608	0.00
1644	17.20	0.75	30	10	1984	1915	4738	2.67
1645	17.80	0.25	30	10	1984	115	3658	9.35
1646	17.80	0.25	30	10	1984	538	3921	8.71
1647	17.80	0.25	30	10	1984	736	4039	8.71
1648	17.80	0.25	30	10	1984	952	4175	8.28
1649	17.80	0.25	30	10	1984	1253	4356	2.96
1650	17.80	0.25	30	10	1984	1446	4469	0.68

Sample number	Miles down-stream	Percent of width	Date			Time (hours)	Lapsed time (min)	Concentration (micrograms per liter)
			Day	Mo	Year			
1651	17.80	0.25	30	10	1984	1700	4603	0.01
1652	17.80	0.25	30	10	1984	1908	4731	0.01
1653	17.80	0.50	30	10	1984	114	3657	9.99
1654	17.80	0.50	30	10	1984	336	3799	10.84
1655	17.80	0.50	30	10	1984	539	3922	8.71
1656	17.80	0.50	30	10	1984	737	4040	9.13
1657	17.80	0.50	30	10	1984	953	4176	8.28
1658	17.80	0.50	30	10	1984	1254	4357	2.86
1659	17.80	0.50	30	10	1984	1447	4470	0.01
1660	17.80	0.50	30	10	1984	1701	4604	0.00
1661	17.80	0.50	30	10	1984	1909	4732	0.01
1662	17.80	0.50	30	10	1984	1916	4739	0.01
1663	17.80	0.50	30	10	1984	2336	4999	0.01
1664	17.80	0.75	30	10	1984	115	3658	11.06
1665	17.80	0.75	30	10	1984	500	3883	9.99
1666	17.80	0.75	30	10	1984	738	4041	8.28
1667	17.80	0.75	30	10	1984	954	4177	8.28
1668	17.80	0.75	30	10	1984	1255	4358	2.86
1669	17.80	0.75	30	10	1984	1448	4471	0.11
1670	17.80	0.75	30	10	1984	1702	4605	0.01
1671	17.80	0.75	30	10	1984	1910	4733	0.01
1672	18.40	0.25	30	10	1984	104	3647	3.15
1673	18.40	0.25	30	10	1984	733	4036	4.85
1674	18.40	0.25	30	10	1984	948	4171	4.64
1675	18.40	0.25	30	10	1984	1250	4353	5.61
1676	18.40	0.25	30	10	1984	1443	4466	0.87
1677	18.40	0.25	30	10	1984	1655	4598	0.01
1678	18.40	0.25	30	10	1984	1904	4727	0.11
1679	18.40	0.50	30	10	1984	105	3648	6.09
1680	18.40	0.50	30	10	1984	130	3673	3.53
1681	18.40	0.50	30	10	1984	146	3689	5.42
1682	18.40	0.50	30	10	1984	202	3705	3.53
1683	18.40	0.50	30	10	1984	218	3721	4.00
1684	18.40	0.50	30	10	1984	234	3737	4.66
1685	18.40	0.50	30	10	1984	250	3753	3.81
1686	18.40	0.50	30	10	1984	306	3769	3.91
1687	18.40	0.50	30	10	1984	322	3785	4.00
1688	18.40	0.50	30	10	1984	338	3801	4.95
1689	18.40	0.50	30	10	1984	353	3816	4.38
1690	18.40	0.50	30	10	1984	409	3832	4.00
1691	18.40	0.50	30	10	1984	425	3848	4.66
1692	18.40	0.50	30	10	1984	441	3864	6.09
1693	18.40	0.50	30	10	1984	457	3880	6.47
1694	18.40	0.50	30	10	1984	513	3896	6.28
1695	18.40	0.50	30	10	1984	529	3912	6.09
1696	18.40	0.50	30	10	1984	545	3928	6.47
1697	18.40	0.50	30	10	1984	601	3944	6.99
1698	18.40	0.50	30	10	1984	617	3960	7.64
1699	18.40	0.50	30	10	1984	633	3976	9.56
1700	18.40	0.50	30	10	1984	648	3991	7.64

Sample number	Miles down-stream	Percent of width	Date			Time (hours)	Lapsed time (min)	Concentration (micrograms per liter)
			Day	Mo	Year			
1701	18.40	0.50	30	10	1984	734	4037	5.28
1702	18.40	0.50	30	10	1984	949	4172	4.85
1703	18.40	0.50	30	10	1984	1038	4221	8.71
1704	18.40	0.50	30	10	1984	1155	4298	6.57
1705	18.40	0.50	30	10	1984	1251	4354	5.23
1706	18.40	0.50	30	10	1984	1444	4467	0.20
1707	18.40	0.50	30	10	1984	1631	4574	0.00
1708	18.40	0.50	30	10	1984	1656	4599	0.00
1709	18.40	0.50	30	10	1984	1905	4728	0.00
1710	18.40	0.50	30	10	1984	1913	4736	0.01
1711	18.40	0.75	30	10	1984	101	3644	6.47
1712	18.40	0.75	30	10	1984	521	3904	6.35
1713	18.40	0.75	30	10	1984	735	4038	5.50
1714	18.40	0.75	30	10	1984	950	4173	5.92
1715	18.40	0.75	30	10	1984	1252	4355	5.71
1716	18.40	0.75	30	10	1984	1445	4468	0.30
1717	18.40	0.75	30	10	1984	1657	4600	0.00
1718	18.40	0.75	30	10	1984	1906	4729	0.00
1719	19.10	0.25	30	10	1984	59	3642	0.49
1720	19.10	0.25	30	10	1984	521	3904	1.63
1721	19.10	0.25	30	10	1984	735	4038	1.25
1722	19.10	0.25	30	10	1984	943	4166	1.44
1723	19.10	0.25	30	10	1984	1247	4350	8.49
1724	19.10	0.25	30	10	1984	1652	4595	0.01
1725	19.10	0.25	30	10	1984	1859	4722	0.11
1726	19.10	0.50	30	10	1984	100	3643	0.58
1727	19.10	0.50	30	10	1984	307	3770	0.30
1728	19.10	0.50	30	10	1984	521	3904	1.34
1729	19.10	0.50	30	10	1984	736	4039	1.25
1730	19.10	0.50	30	10	1984	944	4167	1.06
1731	19.10	0.50	30	10	1984	1248	4351	8.71
1732	19.10	0.50	30	10	1984	1440	4463	1.15
1733	19.10	0.50	30	10	1984	1653	4596	0.01
1734	19.10	0.50	30	10	1984	1900	4723	0.01
1735	19.10	0.50	30	10	1984	1911	4734	0.01
1736	19.10	0.75	30	10	1984	101	3644	0.20
1737	19.10	0.75	30	10	1984	502	3885	1.53
1738	19.10	0.75	30	10	1984	737	4040	1.25
1739	19.10	0.75	30	10	1984	945	4168	1.25
1740	19.10	0.75	30	10	1984	1249	4352	9.13
1741	19.10	0.75	30	10	1984	1441	4464	1.44
1742	19.10	0.75	30	10	1984	1654	4597	0.01
1743	19.10	0.75	30	10	1984	1901	4724	0.01
1744	19.80	0.25	30	10	1984	50	3633	0.01
1745	19.80	0.25	30	10	1984	510	3893	0.11
1746	19.80	0.25	30	10	1984	511	3894	6.35
1747	19.80	0.25	30	10	1984	719	4022	0.11
1748	19.80	0.25	30	10	1984	938	4161	0.11
1749	19.80	0.25	30	10	1984	1242	4345	9.77
1750	19.80	0.25	30	10	1984	1436	4459	4.66

Sample number	Miles down-stream	Percent of width	Date Day Mo Year	Time (hours)	Lapsed time (min)	Concentration (micrograms per liter)
1751	19.80	0.25	30 10 1984	1648	4591	0.20
1752	19.80	0.25	30 10 1984	1855	4718	0.20
1753	19.80	0.25	30 10 1984	1955	4778	0.20
1754	19.80	0.50	30 10 1984	51	3634	0.00
1755	19.80	0.50	30 10 1984	204	3707	0.39
1756	19.80	0.50	30 10 1984	218	3721	0.01
1757	19.80	0.50	30 10 1984	232	3735	1.06
1758	19.80	0.50	30 10 1984	246	3749	0.01
1759	19.80	0.50	30 10 1984	300	3763	0.11
1760	19.80	0.50	30 10 1984	314	3777	1.06
1761	19.80	0.50	30 10 1984	318	3781	5.99
1762	19.80	0.50	30 10 1984	321	3784	1.06
1763	19.80	0.50	30 10 1984	342	3805	1.25
1764	19.80	0.50	30 10 1984	356	3819	2.86
1765	19.80	0.50	30 10 1984	411	3834	0.96
1766	19.80	0.50	30 10 1984	425	3848	0.11
1767	19.80	0.50	30 10 1984	439	3862	0.39
1768	19.80	0.50	30 10 1984	453	3876	0.11
1769	19.80	0.50	30 10 1984	507	3890	0.01
1770	19.80	0.50	30 10 1984	535	3918	0.68
1771	19.80	0.50	30 10 1984	549	3932	0.11
1772	19.80	0.50	30 10 1984	603	3946	0.96
1773	19.80	0.50	30 10 1984	617	3960	1.44
1774	19.80	0.50	30 10 1984	632	3975	0.11
1775	19.80	0.50	30 10 1984	646	3989	0.11
1776	19.80	0.50	30 10 1984	700	4003	1.82
1777	19.80	0.50	30 10 1984	720	4023	0.20
1778	19.80	0.50	30 10 1984	724	4027	0.01
1779	19.80	0.50	30 10 1984	939	4162	0.20
1780	19.80	0.50	30 10 1984	1034	4217	0.11
1781	19.80	0.50	30 10 1984	1149	4292	4.00
1782	19.80	0.50	30 10 1984	1243	4346	10.63
1783	19.80	0.50	30 10 1984	1437	4460	3.81
1784	19.80	0.50	30 10 1984	1624	4567	0.00
1785	19.80	0.50	30 10 1984	1649	4592	0.01
1786	19.80	0.50	30 10 1984	1856	4719	0.01
1787	19.80	0.50	30 10 1984	1905	4728	0.01
1788	19.80	0.50	30 10 1984	2357	5020	0.00
1789	19.80	0.75	30 10 1984	55	3638	0.11
1790	19.80	0.75	30 10 1984	512	3895	0.49
1791	19.80	0.75	30 10 1984	721	4024	0.20
1792	19.80	0.75	30 10 1984	940	4163	0.30
1793	19.80	0.75	30 10 1984	1244	4347	10.20
1794	19.80	0.75	30 10 1984	1438	4461	4.95
1795	19.80	0.75	30 10 1984	1650	4593	0.01
1796	19.80	0.75	30 10 1984	1859	4722	0.01
1797	20.30	0.25	30 10 1984	444	3867	0.11
1798	20.30	0.25	30 10 1984	711	4014	0.20
1799	20.30	0.25	30 10 1984	935	4158	0.20
1800	20.30	0.25	30 10 1984	1239	4342	3.24

Sample number	Miles down-stream	Percent of width	Date			Time (hours)	Lapsed time (min)	Concentration (micrograms per liter)
			Day	Mo	Year			
1801	20.30	0.25	30	10	1984	1432	4455	7.64
1802	20.30	0.25	30	10	1984	1645	4588	0.58
1803	20.30	0.25	30	10	1984	1851	4714	0.30
1804	20.30	0.25	30	10	1984	1950	4773	0.01
1805	20.30	0.25	30	10	1984	2048	4831	0.01
1806	20.30	0.25	30	10	1984	2132	4875	0.00
1807	20.30	0.25	30	10	1984	2152	4895	0.00
1808	20.30	0.25	30	10	1984	2310	4973	0.01
1809	20.30	0.25	30	10	1984	2338	5001	0.01
1810	20.30	0.25	31	10	1984	122	5105	0.11
1811	20.30	0.50	30	10	1984	248	3751	0.11
1812	20.30	0.50	30	10	1984	445	3868	0.30
1813	20.30	0.50	30	10	1984	712	4015	0.20
1814	20.30	0.50	30	10	1984	936	4159	0.30
1815	20.30	0.50	30	10	1984	1240	4343	7.13
1816	20.30	0.50	30	10	1984	1433	4456	5.71
1817	20.30	0.50	30	10	1984	1646	4589	0.20
1818	20.30	0.50	30	10	1984	1852	4715	0.01
1819	20.30	0.50	30	10	1984	1903	4726	0.01
1820	20.30	0.50	30	10	1984	1951	4774	0.01
1821	20.30	0.50	30	10	1984	2049	4832	0.11
1822	20.30	0.50	30	10	1984	2133	4876	0.00
1823	20.30	0.50	30	10	1984	2153	4896	0.00
1824	20.30	0.50	30	10	1984	2239	4942	0.20
1825	20.30	0.50	30	10	1984	2311	4974	0.00
1826	20.30	0.50	31	10	1984	123	5106	0.58
1827	20.30	0.75	30	10	1984	503	3886	0.20
1828	20.30	0.75	30	10	1984	713	4016	0.20
1829	20.30	0.75	30	10	1984	937	4160	0.20
1830	20.30	0.75	30	10	1984	1241	4344	8.27
1831	20.30	0.75	30	10	1984	1434	4457	5.92
1832	20.30	0.75	30	10	1984	1647	4590	0.30
1833	20.30	0.75	30	10	1984	1853	4716	0.11
1834	20.30	0.75	30	10	1984	1952	4775	0.01
1835	20.30	0.75	30	10	1984	2050	4833	0.01
1836	20.30	0.75	30	10	1984	2134	4877	0.30
1837	20.30	0.75	30	10	1984	2154	4897	0.00
1838	20.30	0.75	30	10	1984	2312	4975	0.49
1839	20.30	0.75	30	10	1984	2340	5003	0.01
1840	20.30	0.75	31	10	1984	124	5107	0.01
1841	20.80	0.25	30	10	1984	439	3862	0.11
1842	20.80	0.25	30	10	1984	704	4007	0.20
1843	20.80	0.25	30	10	1984	930	4153	0.20
1844	20.80	0.25	30	10	1984	1235	4338	1.06
1845	20.80	0.25	30	10	1984	1429	4452	8.92
1846	20.80	0.25	30	10	1984	1637	4580	1.91
1847	20.80	0.25	30	10	1984	1847	4710	0.30
1848	20.80	0.25	30	10	1984	1947	4770	0.01
1849	20.80	0.25	30	10	1984	2044	4827	0.01
1850	20.80	0.25	30	10	1984	2129	4872	0.30

Sample number	Miles down- stream	Percent of width	Date			Time (hours)	Lapsed time (min)	Concentration (micrograms per liter)
			Day	Mo	Year			
1851	20.80	0.25	30	10	1984	2149	4892	0.11
1852	20.80	0.25	30	10	1984	2306	4969	0.01
1853	20.80	0.25	30	10	1984	2334	4997	0.01
1854	20.80	0.25	31	10	1984	119	5102	0.20
1855	20.80	0.50	30	10	1984	240	3743	0.96
1856	20.80	0.50	30	10	1984	256	3759	0.11
1857	20.80	0.50	30	10	1984	312	3775	0.11
1858	20.80	0.50	30	10	1984	328	3791	0.39
1859	20.80	0.50	30	10	1984	344	3807	0.11
1860	20.80	0.50	30	10	1984	400	3823	0.30
1861	20.80	0.50	30	10	1984	416	3839	0.20
1862	20.80	0.50	30	10	1984	432	3855	0.20
1863	20.80	0.50	30	10	1984	448	3871	0.11
1864	20.80	0.50	30	10	1984	504	3887	0.20
1865	20.80	0.50	30	10	1984	520	3903	0.20
1866	20.80	0.50	30	10	1984	536	3919	0.11
1867	20.80	0.50	30	10	1984	552	3935	0.39
1868	20.80	0.50	30	10	1984	608	3951	0.01
1869	20.80	0.50	30	10	1984	624	3967	0.96
1870	20.80	0.50	30	10	1984	640	3983	0.11
1871	20.80	0.50	30	10	1984	656	3999	0.01
1872	20.80	0.50	30	10	1984	705	4008	0.58
1873	20.80	0.50	30	10	1984	712	4015	0.11
1874	20.80	0.50	30	10	1984	728	4031	0.39
1875	20.80	0.50	30	10	1984	931	4154	0.30
1876	20.80	0.50	30	10	1984	1031	4214	0.01
1877	20.80	0.50	30	10	1984	1146	4289	0.20
1878	20.80	0.50	30	10	1984	1236	4339	2.67
1879	20.80	0.50	30	10	1984	1430	4453	8.28
1880	20.80	0.50	30	10	1984	1625	4568	0.58
1881	20.80	0.50	30	10	1984	1638	4581	0.96
1882	20.80	0.50	30	10	1984	1850	4713	0.20
1883	20.80	0.50	30	10	1984	1857	4720	0.00
1884	20.80	0.50	30	10	1984	1948	4771	0.11
1885	20.80	0.50	30	10	1984	2045	4828	0.00
1886	20.80	0.50	30	10	1984	2130	4873	0.01
1887	20.80	0.50	30	10	1984	2150	4893	0.00
1888	20.80	0.50	30	10	1984	2307	4970	0.00
1889	20.80	0.50	30	10	1984	2335	4998	0.01
1890	20.80	0.50	31	10	1984	120	5103	0.11
1891	20.80	0.75	30	10	1984	440	3863	0.20
1892	20.80	0.75	30	10	1984	706	4009	0.20
1893	20.80	0.75	30	10	1984	933	4156	0.20
1894	20.80	0.75	30	10	1984	1237	4340	2.10
1895	20.80	0.75	30	10	1984	1431	4454	8.28
1896	20.80	0.75	30	10	1984	1639	4582	0.77
1897	20.80	0.75	30	10	1984	1851	4714	0.11
1898	20.80	0.75	30	10	1984	1948	4771	0.01
1899	20.80	0.75	30	10	1984	2046	4829	0.00
1900	20.80	0.75	30	10	1984	2131	4874	0.01

Sample number	Miles down-stream	Percent of width	Date			'Time (hours)	Lapsed time (min)	Concentration (micrograms per liter)
			Day	Mo	Year			
1901	20.80	0.75	30	10	1984	2151	4894	0.01
1902	20.80	0.75	30	10	1984	2308	4971	0.00
1903	20.80	0.75	30	10	1984	2336	4999	0.01
1904	20.80	0.75	31	10	1984	121	5104	0.11
1905	21.30	0.25	30	10	1984	656	3999	0.20
1906	21.30	0.25	30	10	1984	927	4150	0.30
1907	21.30	0.25	30	10	1984	1231	4334	0.11
1908	21.30	0.25	30	10	1984	1425	4448	8.49
1909	21.30	0.25	30	10	1984	1630	4573	3.91
1910	21.30	0.25	30	10	1984	1843	4706	0.39
1911	21.30	0.25	30	10	1984	1943	4766	0.39
1912	21.30	0.25	30	10	1984	2040	4823	0.11
1913	21.30	0.25	30	10	1984	2124	4867	0.01
1914	21.30	0.25	30	10	1984	2132	4875	0.00
1915	21.30	0.25	30	10	1984	2145	4888	0.01
1916	21.30	0.25	30	10	1984	2302	4965	0.01
1917	21.30	0.25	30	10	1984	2331	4994	0.01
1918	21.30	0.25	31	10	1984	116	5099	0.20
1919	21.30	0.50	30	10	1984	657	4000	0.58
1920	21.30	0.50	30	10	1984	928	4151	0.58
1921	21.30	0.50	30	10	1984	1232	4335	0.68
1922	21.30	0.50	30	10	1984	1426	4449	9.13
1923	21.30	0.50	30	10	1984	1631	4574	2.86
1924	21.30	0.50	30	10	1984	1844	4707	0.11
1925	21.30	0.50	30	10	1984	1854	4717	0.01
1926	21.30	0.50	30	10	1984	1944	4767	0.20
1927	21.30	0.50	30	10	1984	2041	4824	0.01
1928	21.30	0.50	30	10	1984	2125	4868	0.00
1929	21.30	0.50	30	10	1984	2146	4889	0.00
1930	21.30	0.50	30	10	1984	2305	4968	0.20
1931	21.30	0.50	30	10	1984	2333	4996	0.11
1932	21.30	0.50	31	10	1984	117	5100	0.30
1933	21.30	0.75	30	10	1984	658	4001	0.20
1934	21.30	0.75	30	10	1984	929	4152	0.30
1935	21.30	0.75	30	10	1984	1232	4335	0.30
1936	21.30	0.75	30	10	1984	1427	4450	9.35
1937	21.30	0.75	30	10	1984	1632	4575	2.58
1938	21.30	0.75	30	10	1984	1845	4708	0.30
1939	21.30	0.75	30	10	1984	1945	4768	0.39
1940	21.30	0.75	30	10	1984	2042	4825	0.01
1941	21.30	0.75	30	10	1984	2126	4869	0.01
1942	21.30	0.75	30	10	1984	2147	4890	0.30
1943	21.30	0.75	30	10	1984	2304	4967	0.01
1944	21.30	0.75	30	10	1984	2333	4996	0.01
1945	21.30	0.75	31	10	1984	118	5101	0.11
1946	21.90	0.25	30	10	1984	911	4134	0.00
1947	21.90	0.25	30	10	1984	926	4149	2.20
1948	21.90	0.25	30	10	1984	941	4164	1.91
1949	21.90	0.25	30	10	1984	944	4167	0.11
1950	21.90	0.25	30	10	1984	956	4179	0.58

Sample number	Miles down- stream	Percent of width	Date			Time (hours)	Lapsed time (min)	Concentration (micrograms per liter)
			Day	Mo	Year			
1951	21.90	0.25	30	10	1984	1011	4194	0.01
1952	21.90	0.25	30	10	1984	1026	4209	0.00
1953	21.90	0.25	30	10	1984	1041	4224	0.77
1954	21.90	0.25	30	10	1984	1056	4239	0.11
1955	21.90	0.25	30	10	1984	1111	4254	0.01
1956	21.90	0.25	30	10	1984	1126	4269	0.01
1957	21.90	0.25	30	10	1984	1141	4284	0.58
1958	21.90	0.25	30	10	1984	1156	4299	2.39
1959	21.90	0.25	30	10	1984	1211	4314	0.77
1960	21.90	0.25	30	10	1984	1226	4329	4.00
1961	21.90	0.25	30	10	1984	1241	4344	0.01
1962	21.90	0.25	30	10	1984	1256	4359	0.01
1963	21.90	0.25	30	10	1984	1311	4374	1.91
1964	21.90	0.25	30	10	1984	1326	4389	0.11
1965	21.90	0.25	30	10	1984	1341	4404	1.91
1966	21.90	0.25	30	10	1984	1356	4419	2.01
1967	21.90	0.25	30	10	1984	1411	4434	1.82
1968	21.90	0.25	30	10	1984	1426	4449	2.96
1969	21.90	0.25	30	10	1984	1441	4464	4.19
1970	21.90	0.25	30	10	1984	1611	4554	8.65
1971	21.90	0.25	30	10	1984	1620	4563	4.21
1972	21.90	0.25	30	10	1984	1626	4569	7.51
1973	21.90	0.25	30	10	1984	1641	4584	7.42
1974	21.90	0.25	30	10	1984	1656	4599	7.42
1975	21.90	0.25	30	10	1984	1711	4614	4.28
1976	21.90	0.25	30	10	1984	1726	4629	5.14
1977	21.90	0.25	30	10	1984	1741	4644	4.38
1978	21.90	0.25	30	10	1984	1756	4659	4.10
1979	21.90	0.25	30	10	1984	1811	4674	2.67
1980	21.90	0.25	30	10	1984	1826	4689	1.91
1981	21.90	0.25	30	10	1984	1841	4704	1.06
1982	21.90	0.25	30	10	1984	1856	4719	1.25
1983	21.90	0.25	30	10	1984	1911	4734	0.87
1984	21.90	0.25	30	10	1984	1926	4749	0.68
1985	21.90	0.25	30	10	1984	1941	4764	0.49
1986	21.90	0.25	30	10	1984	1956	4779	0.49
1987	21.90	0.25	30	10	1984	2011	4794	0.96
1988	21.90	0.25	30	10	1984	2026	4809	0.49
1989	21.90	0.25	30	10	1984	2046	4829	0.20
1990	21.90	0.25	30	10	1984	2100	4843	0.30
1991	21.90	0.25	30	10	1984	2115	4858	0.30
1992	21.90	0.25	30	10	1984	2130	4873	0.11
1993	21.90	0.25	30	10	1984	2145	4888	0.11
1994	21.90	0.25	30	10	1984	2200	4903	0.11
1995	21.90	0.25	30	10	1984	2216	4919	1.44
1996	21.90	0.25	30	10	1984	2231	4934	0.20
1997	21.90	0.25	30	10	1984	2246	4949	0.30
1998	21.90	0.25	30	10	1984	2301	4964	0.20
1999	21.90	0.25	30	10	1984	2316	4979	0.39
2000	21.90	0.25	30	10	1984	2331	4994	0.20

Sample number	Miles down-stream	Percent of width	Date			Time (hours)	Lapsed time (min)	Concentration (micrograms per liter)
			Day	Mo	Year			
2001	21.90	0.25	30	10	1984	2346	5009	1.25
2002	21.90	0.25	31	10	1984	1	5024	0.20
2003	21.90	0.25	31	10	1984	16	5039	0.39
2004	21.90	0.25	31	10	1984	31	5054	0.30
2005	21.90	0.25	31	10	1984	49	5072	0.20
2006	21.90	0.25	31	10	1984	102	5085	0.30
2007	21.90	0.25	31	10	1984	117	5100	1.06
2008	21.90	0.25	31	10	1984	137	5120	0.30
2009	21.90	0.25	31	10	1984	152	5135	0.30
2010	21.90	0.25	31	10	1984	207	5150	0.30
2011	21.90	0.25	31	10	1984	222	5165	0.30
2012	21.90	0.25	31	10	1984	237	5180	0.49
2013	21.90	0.25	31	10	1984	308	5211	1.25
2014	21.90	0.25	31	10	1984	323	5226	0.30
2015	21.90	0.25	31	10	1984	338	5241	0.20
2016	21.90	0.25	31	10	1984	358	5261	0.58
2017	21.90	0.25	31	10	1984	408	5271	0.20
2018	21.90	0.25	31	10	1984	423	5286	0.30
2019	21.90	0.25	31	10	1984	438	5301	0.49
2020	21.90	0.25	31	10	1984	453	5316	0.30
2021	21.90	0.25	31	10	1984	508	5331	0.30
2022	21.90	0.25	31	10	1984	523	5346	0.30
2023	21.90	0.25	31	10	1984	538	5361	0.49
2024	21.90	0.25	31	10	1984	553	5376	0.11
2025	21.90	0.25	31	10	1984	608	5391	0.39
2026	21.90	0.25	31	10	1984	623	5406	0.20
2027	21.90	0.25	31	10	1984	638	5421	0.20
2028	21.90	0.25	31	10	1984	653	5436	0.20
2029	21.90	0.25	31	10	1984	708	5451	0.20
2030	21.90	0.25	31	10	1984	723	5466	0.30
2031	21.90	0.25	31	10	1984	738	5481	0.20
2032	21.90	0.25	31	10	1984	753	5496	0.20
2033	21.90	0.25	31	10	1984	808	5511	0.20
2034	21.90	0.25	31	10	1984	823	5526	0.20
2035	21.90	0.25	31	10	1984	838	5541	0.39
2036	21.90	0.25	31	10	1984	853	5556	0.20
2037	21.90	0.25	31	10	1984	908	5571	0.30
2038	21.90	0.25	31	10	1984	923	5586	0.20
2039	21.90	0.25	31	10	1984	938	5601	0.30
2040	21.90	0.25	31	10	1984	953	5616	0.39
2041	21.90	0.25	31	10	1984	1008	5631	0.49
2042	21.90	0.50	30	10	1984	903	4126	0.00
2043	21.90	0.50	30	10	1984	918	4141	0.11
2044	21.90	0.50	30	10	1984	933	4156	0.01
2045	21.90	0.50	30	10	1984	943	4166	0.01
2046	21.90	0.50	30	10	1984	948	4171	0.11
2047	21.90	0.50	30	10	1984	1003	4186	0.11
2048	21.90	0.50	30	10	1984	1018	4201	0.01
2049	21.90	0.50	30	10	1984	1033	4216	0.01
2050	21.90	0.50	30	10	1984	1048	4231	0.01

Sample number	Miles down-stream	Percent of width	Date			Time (hours)	Lapsed time (min)	Concentration (micrograms per liter)
			Day	Mo	Year			
2051	21.90	0.50	30	10	1984	1103	4246	0.49
2052	21.90	0.50	30	10	1984	1118	4261	0.01
2053	21.90	0.50	30	10	1984	1133	4276	0.20
2054	21.90	0.50	30	10	1984	1134	4277	0.20
2055	21.90	0.50	30	10	1984	1148	4291	0.01
2056	21.90	0.50	30	10	1984	1203	4306	0.00
2057	21.90	0.50	30	10	1984	1218	4321	0.30
2058	21.90	0.50	30	10	1984	1233	4336	0.01
2059	21.90	0.50	30	10	1984	1248	4351	0.01
2060	21.90	0.50	30	10	1984	1303	4366	0.00
2061	21.90	0.50	30	10	1984	1318	4381	0.20
2062	21.90	0.50	30	10	1984	1333	4396	0.30
2063	21.90	0.50	30	10	1984	1348	4411	0.11
2064	21.90	0.50	30	10	1984	1403	4426	0.30
2065	21.90	0.50	30	10	1984	1403	4426	0.30
2066	21.90	0.50	30	10	1984	1418	4441	1.34
2067	21.90	0.50	30	10	1984	1433	4456	2.29
2068	21.90	0.50	30	10	1984	1448	4471	4.10
2069	21.90	0.50	30	10	1984	1540	4523	8.93
2070	21.90	0.50	30	10	1984	1553	4536	9.12
2071	21.90	0.50	30	10	1984	1607	4550	9.12
2072	21.90	0.50	30	10	1984	1615	4558	5.50
2073	21.90	0.50	30	10	1984	1619	4562	6.14
2074	21.90	0.50	30	10	1984	1621	4564	7.23
2075	21.90	0.50	30	10	1984	1634	4577	4.76
2076	21.90	0.50	30	10	1984	1648	4591	5.42
2077	21.90	0.50	30	10	1984	1702	4605	3.81
2078	21.90	0.50	30	10	1984	1715	4618	3.34
2079	21.90	0.50	30	10	1984	1729	4632	2.29
2080	21.90	0.50	30	10	1984	1757	4660	1.34
2081	21.90	0.50	30	10	1984	1810	4673	2.01
2082	21.90	0.50	30	10	1984	1824	4687	1.53
2083	21.90	0.50	30	10	1984	1838	4701	1.25
2084	21.90	0.50	30	10	1984	1847	4710	0.77
2085	21.90	0.50	30	10	1984	1851	4714	0.68
2086	21.90	0.50	30	10	1984	1905	4728	0.77
2087	21.90	0.50	30	10	1984	1919	4742	0.49
2088	21.90	0.50	30	10	1984	1932	4755	0.49
2089	21.90	0.50	30	10	1984	1946	4769	0.30
2090	21.90	0.50	30	10	1984	2000	4783	0.20
2091	21.90	0.50	30	10	1984	2014	4797	0.20
2092	21.90	0.50	30	10	1984	2027	4810	0.11
2093	21.90	0.50	30	10	1984	2042	4825	0.11
2094	21.90	0.50	30	10	1984	2150	4893	1.06
2095	21.90	0.50	30	10	1984	2205	4908	0.68
2096	21.90	0.50	30	10	1984	2221	4924	0.39
2097	21.90	0.50	30	10	1984	2236	4939	0.68
2098	21.90	0.50	30	10	1984	2252	4955	0.39
2099	21.90	0.50	30	10	1984	2307	4970	0.11
2100	21.90	0.50	30	10	1984	2323	4986	0.87

Sample number	Miles down-stream	Percent of width	Date			Time (hours)	Lapsed time (min)	Concentration (micrograms per liter)
			Day	Mo	Year			
2101	21.90	0.50	30	10	1984	2338	5001	0.01
2102	21.90	0.50	30	10	1984	2354	5017	0.49
2103	21.90	0.50	31	10	1984	9	5032	0.11
2104	21.90	0.50	31	10	1984	25	5048	0.39
2105	21.90	0.50	31	10	1984	40	5063	0.87
2106	21.90	0.50	31	10	1984	111	5094	0.49
2107	21.90	0.50	31	10	1984	127	5110	0.11
2108	21.90	0.50	31	10	1984	142	5125	0.20
2109	21.90	0.50	31	10	1984	158	5141	0.39
2110	21.90	0.50	31	10	1984	213	5156	0.20
2111	21.90	0.50	31	10	1984	229	5172	4.10
2112	21.90	0.50	31	10	1984	244	5187	1.06
2113	21.90	0.50	31	10	1984	310	5213	0.20
2114	21.90	0.50	31	10	1984	325	5228	0.20
2115	21.90	0.50	31	10	1984	334	5237	0.49
2116	21.90	0.50	31	10	1984	341	5244	0.20
2117	21.90	0.50	31	10	1984	349	5252	0.30
2118	21.90	0.50	31	10	1984	356	5259	0.58
2119	21.90	0.50	31	10	1984	404	5267	0.49
2120	21.90	0.50	31	10	1984	419	5282	0.30
2121	21.90	0.50	31	10	1984	434	5297	0.30
2122	21.90	0.50	31	10	1984	449	5312	0.20
2123	21.90	0.50	31	10	1984	504	5327	0.30
2124	21.90	0.50	31	10	1984	519	5342	0.11
2125	21.90	0.50	31	10	1984	534	5357	0.39
2126	21.90	0.50	31	10	1984	549	5372	0.20
2127	21.90	0.50	31	10	1984	604	5387	0.30
2128	21.90	0.50	31	10	1984	619	5402	0.11
2129	21.90	0.50	31	10	1984	634	5417	0.30
2130	21.90	0.50	31	10	1984	649	5432	0.20
2131	21.90	0.50	31	10	1984	704	5447	0.11
2132	21.90	0.50	31	10	1984	719	5462	0.20
2133	21.90	0.50	31	10	1984	734	5477	0.20
2134	21.90	0.50	31	10	1984	749	5492	1.53
2135	21.90	0.50	31	10	1984	804	5507	0.49
2136	21.90	0.50	31	10	1984	819	5522	0.20
2137	21.90	0.50	31	10	1984	834	5537	0.87
2138	21.90	0.50	31	10	1984	849	5552	0.11
2139	21.90	0.50	31	10	1984	904	5567	0.30
2140	21.90	0.50	31	10	1984	919	5582	0.30
2141	21.90	0.75	30	10	1984	850	4113	0.01
2142	21.90	0.75	30	10	1984	905	4128	0.00
2143	21.90	0.75	30	10	1984	920	4143	0.00
2144	21.90	0.75	30	10	1984	935	4158	0.00
2145	21.90	0.75	30	10	1984	942	4165	0.11
2146	21.90	0.75	30	10	1984	950	4173	0.01
2147	21.90	0.75	30	10	1984	1005	4188	0.87
2148	21.90	0.75	30	10	1984	1020	4203	0.00
2149	21.90	0.75	30	10	1984	1035	4218	0.00
2150	21.90	0.75	30	10	1984	1050	4233	3.05

Sample number	Miles down-stream	Percent of width	Date Day Mo Year	Time (hours)	Lapsed time (min)	Concentration (micrograms per liter)
2151	21.90	0.75	30 10 1984	1105	4248	0.00
2152	21.90	0.75	30 10 1984	1120	4263	0.01
2153	21.90	0.75	30 10 1984	1135	4278	1.06
2154	21.90	0.75	30 10 1984	1150	4293	1.44
2155	21.90	0.75	30 10 1984	1205	4308	0.01
2156	21.90	0.75	30 10 1984	1220	4323	0.01
2157	21.90	0.75	31 10 1984	*		14.31
2158	21.90	0.75	30 10 1984	1305	4368	0.39
2159	21.90	0.75	30 10 1984	1320	4383	0.11
2160	21.90	0.75	30 10 1984	1335	4398	0.49
2161	21.90	0.75	30 10 1984	1350	4413	1.34
2162	21.90	0.75	30 10 1984	1405	4428	3.81
2163	21.90	0.75	30 10 1984	1420	4443	5.42
2164	21.90	0.75	30 10 1984	1435	4458	5.99
2165	21.90	0.75	30 10 1984	1534	4517	7.21
2166	21.90	0.75	30 10 1984	1549	4532	7.85
2167	21.90	0.75	30 10 1984	1603	4546	6.99
2168	21.90	0.75	30 10 1984	1618	4561	7.21
2169	21.90	0.75	30 10 1984	1632	4575	5.92
2170	21.90	0.75	30 10 1984	1647	4590	4.66
2171	21.90	0.75	30 10 1984	1701	4604	3.15
2172	21.90	0.75	30 10 1984	1716	4619	3.72
2173	21.90	0.75	30 10 1984	1730	4633	2.10
2174	21.90	0.75	30 10 1984	1745	4648	1.82
2175	21.90	0.75	30 10 1984	1759	4662	1.44
2176	21.90	0.75	30 10 1984	1804	4667	1.25
2177	21.90	0.75	30 10 1984	1818	4681	1.44
2178	21.90	0.75	30 10 1984	1833	4696	2.10
2179	21.90	0.75	30 10 1984	1847	4710	0.68
2180	21.90	0.75	30 10 1984	1902	4725	0.49
2181	21.90	0.75	30 10 1984	1916	4739	0.39
2182	21.90	0.75	30 10 1984	1931	4754	0.39
2183	21.90	0.75	30 10 1984	1945	4768	0.30
2184	21.90	0.75	30 10 1984	2000	4783	0.20
2185	21.90	0.75	30 10 1984	2015	4798	0.87
2186	21.90	0.75	30 10 1984	2029	4812	0.77
2187	21.90	0.75	30 10 1984	2044	4827	0.30
2188	21.90	0.75	30 10 1984	2114	4857	0.20
2189	21.90	0.75	30 10 1984	2128	4871	0.20
2190	21.90	0.75	30 10 1984	2142	4885	0.30
2191	21.90	0.75	30 10 1984	2156	4899	0.39
2192	21.90	0.75	30 10 1984	2210	4913	0.68
2193	21.90	0.75	30 10 1984	2224	4927	0.20
2194	21.90	0.75	30 10 1984	2238	4941	0.30
2195	21.90	0.75	30 10 1984	2252	4955	0.30
2196	21.90	0.75	30 10 1984	2309	4972	0.30
2197	21.90	0.75	30 10 1984	2321	4984	0.30
2198	21.90	0.75	30 10 1984	2335	4998	0.30
2199	21.90	0.75	30 10 1984	2350	5013	0.49
2200	21.90	0.75	31 10 1984	4	5027	0.96

Sample number	Miles down- stream	Percent of width	Date			Time (hours)	Lapsed time (min)	Concentration (micrograms per liter)
			Day	Mo	Year			
2201	21.90	0.75	31	10	1984	28	5051	0.87
2202	21.90	0.75	31	10	1984	42	5065	0.39
2203	21.90	0.75	31	10	1984	57	5080	0.30
2204	21.90	0.75	31	10	1984	111	5094	0.30
2205	21.90	0.75	31	10	1984	125	5108	0.20
2206	21.90	0.75	31	10	1984	139	5122	0.87
2207	21.90	0.75	31	10	1984	146	5129	0.96
2208	21.90	0.75	31	10	1984	200	5143	0.49
2209	21.90	0.75	31	10	1984	214	5157	0.30
2210	21.90	0.75	31	10	1984	228	5171	0.30
2211	21.90	0.75	31	10	1984	242	5185	0.30
2212	21.90	0.75	31	10	1984	314	5217	0.39
2213	21.90	0.75	31	10	1984	329	5232	0.39
2214	21.90	0.75	31	10	1984	344	5247	0.30
2215	21.90	0.75	31	10	1984	359	5262	0.20
2216	21.90	0.75	31	10	1984	414	5277	0.49
2217	21.90	0.75	31	10	1984	429	5292	0.39
2218	21.90	0.75	31	10	1984	444	5307	0.20
2219	21.90	0.75	31	10	1984	459	5322	0.77
2220	21.90	0.75	31	10	1984	514	5337	0.39
2221	21.90	0.75	31	10	1984	529	5352	0.30
2222	21.90	0.75	31	10	1984	544	5367	0.30
2223	21.90	0.75	31	10	1984	559	5382	0.58
2224	21.90	0.75	31	10	1984	614	5397	0.49
2225	21.90	0.75	31	10	1984	644	5427	0.20
2226	21.90	0.75	31	10	1984	659	5442	0.20
2227	21.90	0.75	31	10	1984	714	5457	0.20
2228	21.90	0.75	31	10	1984	729	5472	0.39
2229	21.90	0.75	31	10	1984	744	5487	0.20
2230	21.90	0.75	31	10	1984	759	5502	0.20
2231	21.90	0.75	31	10	1984	814	5517	0.20
2232	21.90	0.75	31	10	1984	829	5532	0.20
2233	21.90	0.75	31	10	1984	844	5547	0.20
2234	21.90	0.75	31	10	1984	859	5562	0.20
2235	21.90	0.75	31	10	1984	1520	5943	8.06
2236	22.40	0.25	30	10	1984	1623	4566	6.47
2237	22.40	0.25	30	10	1984	1838	4701	2.48
2238	22.40	0.25	30	10	1984	1939	4762	1.53
2239	22.40	0.25	30	10	1984	2035	4818	0.87
2240	22.40	0.25	30	10	1984	2120	4863	0.49
2241	22.40	0.25	30	10	1984	2140	4883	0.39
2242	22.40	0.25	30	10	1984	2257	4960	0.39
2243	22.40	0.25	30	10	1984	2325	4988	0.30
2244	22.40	0.25	31	10	1984	110	5093	0.30
2245	22.40	0.50	30	10	1984	1624	4567	6.09
2246	22.40	0.50	30	10	1984	1839	4702	2.39
2247	22.40	0.50	30	10	1984	1840	4703	2.67
2248	22.40	0.50	30	10	1984	1940	4763	1.63
2249	22.40	0.50	30	10	1984	2036	4819	1.53
2250	22.40	0.50	30	10	1984	2121	4864	0.77

Sample number	Miles down-stream	Percent of width	Date Day Mo Year	Time (hours)	Lapsed time (min)	Concentration (micrograms per liter)
2251	22.40	0.50	30 10 1984	2142	4885	0.68
2252	22.40	0.50	30 10 1984	2258	4961	0.39
2253	22.40	0.50	30 10 1984	2326	4989	0.20
2254	22.40	0.50	31 10 1984	111	5094	0.58
2255	22.40	0.75	30 10 1984	1625	4568	6.94
2256	22.40	0.75	30 10 1984	1840	4703	2.39
2257	22.40	0.75	30 10 1984	1941	4764	1.15
2258	22.40	0.75	30 10 1984	2037	4820	0.96
2259	22.40	0.75	30 10 1984	2122	4865	0.68
2260	22.40	0.75	30 10 1984	2143	4886	0.30
2261	22.40	0.75	30 10 1984	2259	4962	0.20
2262	22.40	0.75	30 10 1984	2327	4990	0.96
2263	22.40	0.75	31 10 1984	112	5095	0.87
2264	22.90	0.25	30 10 1984	1622	4565	7.80
2265	22.90	0.25	30 10 1984	1623	4566	6.47
2266	22.90	0.25	30 10 1984	1830	4693	4.76
2267	22.90	0.25	30 10 1984	1935	4758	2.86
2268	22.90	0.25	30 10 1984	2031	4814	1.15
2269	22.90	0.25	30 10 1984	2116	4859	0.68
2270	22.90	0.25	30 10 1984	2137	4880	0.49
2271	22.90	0.25	30 10 1984	2253	4956	0.30
2272	22.90	0.25	30 10 1984	2319	4982	0.30
2273	22.90	0.50	30 10 1984	1621	4564	7.70
2274	22.90	0.50	30 10 1984	1831	4694	3.62
2275	22.90	0.50	30 10 1984	1834	4697	2.96
2276	22.90	0.50	30 10 1984	1936	4759	1.53
2277	22.90	0.50	30 10 1984	2032	4815	0.96
2278	22.90	0.50	30 10 1984	2117	4860	0.58
2279	22.90	0.50	30 10 1984	2138	4881	0.58
2280	22.90	0.50	30 10 1984	2254	4957	0.20
2281	22.90	0.50	30 10 1984	2320	4983	0.30
2282	22.90	0.50	31 10 1984	108	5091	0.30
2283	22.90	0.75	30 10 1984	1620	4563	8.46
2284	22.90	0.75	30 10 1984	1832	4695	3.81
2285	22.90	0.75	30 10 1984	1937	4760	1.53
2286	22.90	0.75	30 10 1984	2033	4816	0.87
2287	22.90	0.75	30 10 1984	2118	4861	0.68
2288	22.90	0.75	30 10 1984	2139	4882	0.49
2289	22.90	0.75	30 10 1984	2255	4958	0.30
2290	22.90	0.75	30 10 1984	2321	4984	0.39
2291	22.90	0.75	31 10 1984	109	5092	0.39
2292	22.90	0.25	31 10 1984	109	5092	0.39

* Data input error.