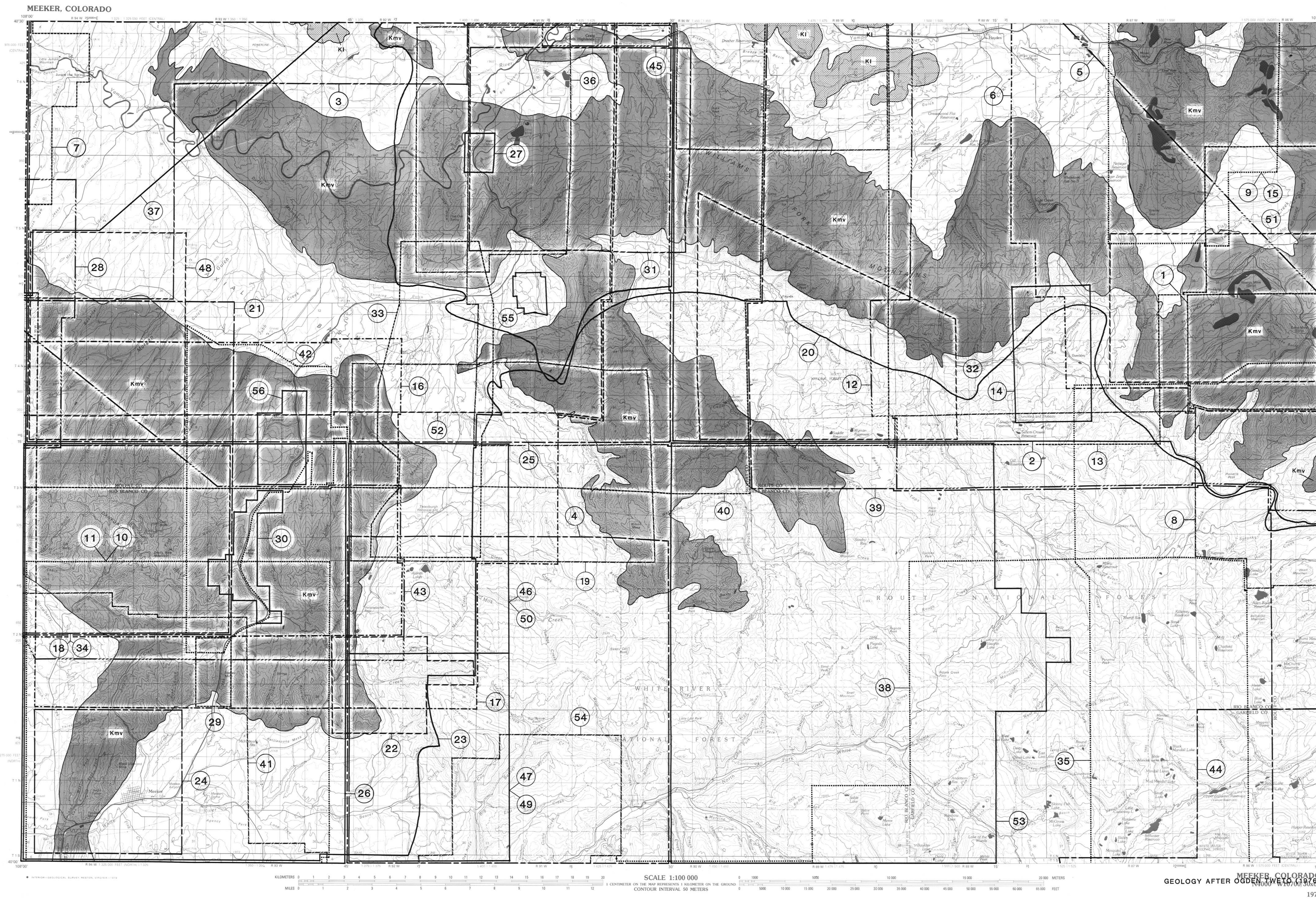


EXPLANATION

- KI LANCE FORMATION ( UPPER CRETACEOUS )
- Kmv MESAVERDE GROUP ( UPPER CRETACEOUS )
- NON COAL BEARING FORMATIONS
- 8 REFERENCE NUMBER IS PLACED ON OUTSIDE OF MAP BOUNDARY



References to Geologic Maps

1. Adair, J. S., 1952, Geology of a portion of the Yampa coal field, Routt County, Colorado: U.S. Geological Survey unnumbered map, scale 1:33,680.
2. Bass, M. M., Eby, J. B., and Campbell, M. R., 1955, Geology and mineral fields of parts of Routt and Moffat Counties, Colorado: U.S. Geological Survey Bulletin 1027-D, p. 143-250, pl. 19, scale 1:62,500.
3. Bergin, M. J., 1959, Preliminary geologic map of the Mayhill-Lay area, Moffat County, Colorado: U.S. Geological Survey unnumbered open-file map, scale 1:62,500.
4. Bookerman, A. A., 1964, Geology of the Yellowjacket anticline, Rio Blanco County, northeastern Colorado: University of Colorado Masters Thesis, 74 p., pl. 1, scale 1:33,680.
5. Buffler, R. T., 1959, The Browns Park Formation and its relationship to the late Tertiary geologic history of the Elkhead region, northwestern Colorado: Ph.D. dissertation, University of California, Berkeley, 148 p., pl. 1, approximate scale 1:200,000.
6. Campbell, M. R., 1923, The Twentymile Park district of the Yampa coal field, Routt County, Colorado: U.S. Geological Survey Bulletin 748, 80 p., pl. 1, scale 1:62,500.
7. Clough, G. A., and Abrassart, C. P., 1955, Geologic map of the Juniper Mountain area, Moffat County, Colorado, in Ely, J. B., and Oriel, S. S., eds., Guidebook to the geology of northwest Colorado, 6th annual field conference: International Association of Petroleum Geologists-Rocky Mountain Association of Geologists, pl. 111, approximate scale 1:100,000.
8. Coffin, R. C., Perini, V. C., Jr., and Collins, M. J., 1924, Some anticlines of western Colorado: Colorado Geological Survey Bulletin 24, 48 p., pl. 1, scale 1:125,720.
9. Coffin, R. C., Perini, V. C., Jr., and Collins, M. J., 1924, Some anticlines of western Colorado: Colorado Geological Survey Bulletin 24, 48 p., pl. 1, scale 1:125,720.
10. Collins, M. J., 1916, Geology of the coal deposits of the Carbonado, Grand Hoopack and southern Danforth hills coal fields, southeastern Finance Basin, Colorado: Colorado School of Mines Ph. D. dissertation, 218 p., pl. 1, scale 1:21,000.
11. Collins, M. J., 1916, Coal deposits of the Carbonado, Grand Hoopack, and southern Danforth hills coal fields, eastern Finance Basin, Colorado: Quarterly of the Colorado School of Mines, v. 71, no. 1, 138 p., pl. 1, scale 1:21,000.
12. Colorado State Planning Commission, 1939, Oak Creek and Mt. Harris coal fields, Routt County, Colorado: Unpublished geologic map, scale 1:63,360.
13. Crawford, R. D., Wilson, K. W., and Perini, V. C., 1920, Some anticlines of Routt County, Colorado: Colorado Geological Survey Bulletin 23, 59 p., pl. 1, scale 1:125,720.
14. Crawford, R. D., Wilson, K. W., and Perini, V. C., 1920, Some anticlines of Routt County, Colorado: Colorado Geological Survey Bulletin 23, 59 p., pl. 1, scale 1:125,720.
15. Crawford, R. D., Wilson, K. W., and Perini, V. C., 1920, Some anticlines of Routt County, Colorado: Colorado Geological Survey Bulletin 23, 59 p., pl. 1, scale 1:125,720.
16. Dickinson, R. G., 1966, Geologic sketch map of the Danforth Hills area, Colorado: U.S. Geological Survey unnumbered map, scale 1:62,500.
17. Dobbin, C. E., 1950, The petroleum geology of Colorado: Quarterly of the Colorado School of Mines, v. 75, no. 3, p. 1-37, pl. 1, scale 1:380,160.
18. Dobbin, C. E., 1950, The petroleum geology of Colorado: Quarterly of the Colorado School of Mines, v. 75, no. 3, p. 1-37, pl. 1, scale 1:380,160.
19. Duni, J. S., 1966, Geologic map of the Thoroughbred and gas field and vicinity, Moffat and Rio Blanco Counties, Colorado: U.S. Geological Survey Oil and Gas Investigations Map O-251, sheet 1, scale 1:24,000.
20. Fenneman, M. M., and Gale, H. S., 1906, The Yampa coal field, Routt County, Colorado: U.S. Geological Survey Bulletin 291, 96 p., pl. 1, scale 1:125,000.
21. Finley, E. A., 1951, Geology of Moffat Gulch and Wilson Creek oil fields and vicinity, Moffat and Rio Blanco Counties, Colorado: U.S. Geological Survey unnumbered map, scale 1:33,680.
22. Gale, H. S., 1907, Carnette in Rio Blanco County, Colorado, in Contributions to economic geology, 1906, part 1 - metals and nonmetals, except fuels: U.S. Geological Survey Bulletin 334-C, p. 110-117, scale 1:63,360.
23. Gale, H. S., 1907, Coal fields of northeastern Colorado and northeastern Utah: U.S. Geological Survey Bulletin 415, 265 p., pl. XVII, scale 1:125,000.
24. Gale, H. S., 1910, Coal fields of northeastern Colorado and northeastern Utah: U.S. Geological Survey Bulletin 415, 265 p., pl. XVII, scale 1:125,000.
25. Hancock, E. T., 1925, Geology and coal resources of the Axtal and Monument Butte quadrangles, Moffat County, Colorado: U.S. Geological Survey Bulletin 757, 134 p., pl. XIII, scale 1:62,500.
26. Hancock, E. T., and Eby, J. B., 1930, Geology and coal resources of the Meeker quadrangle, Moffat and Rio Blanco Counties, Colorado: U.S. Geological Survey Bulletin 812-C, p. 191-242, pl. 19, scale 1:62,500.
27. Horn, G. W., 1948, Geologic and structure contour map of part of the Wise Hill coal district, Moffat County, Colorado: U.S. Geological Survey unnumbered map, scale 1:12,000.
28. Horn, G. W., 1956, Geologic and structure map of the Moffat Gulch, Temple Canyon, and Danforth hills oil fields and vicinity, Moffat County, Colorado: U.S. Geological Survey unnumbered open-file map, scale 1:33,680.
29. Horn, G. W., and Adair, J. S., 1953, Geologic and structure map of the Curtis Creek coal district, Rio Blanco County, Colorado: U.S. Geological Survey unnumbered map, scale 1:12,000.
30. Horn, G. W., and Collins, C. R., 1950, Geologic and structure reconnaissance map of part of the Axtal coal district, Rio Blanco County, Colorado: U.S. Geological Survey unnumbered map, scale 1:16,000.
31. Horn, G. W., and Richardson, E. E., 1952, Geologic and structure map of the Williams Fork Mountains coal fields, Moffat County, Colorado: U.S. Geological Survey unnumbered map, scale 1:24,000.
32. Kerr, B. G., 1958, Geology of the Pagoda area, northwestern Colorado: Colorado School of Mines Masters Thesis, 124 p., pl. 1, scale 1:33,680.
33. Konishi, Kenji, 1955, Geology of the Iles dome area, Moffat and Rio Blanco Counties, Colorado, and stratigraphic analysis of the Dakota Sandstone, northwestern Colorado: Colorado School of Mines Masters Thesis, 194 p., pl. 1, scale 1:33,680.
34. Kramer, R. S., 1939, Geologic map of the Wilson Creek dome, Moffat and Rio Blanco Counties, Colorado: U.S. Geological Survey unnumbered map, scale 1:25,000.
35. Kucera, R. E., 1962, Geology of the Yampa district, northwestern Colorado: University of Colorado Ph. D. dissertation, 675 p., pl. 1, approximate scale 1:125,000.
36. Lauman, G. W., 1965, Geology of Iles Mountain area, Moffat County, northwestern Colorado: Colorado School of Mines Masters Thesis, 129 p., pl. 1, scale 1:33,680.
37. Lewis, S. S., 1972, Geology of uranium mineralization in the Browns Park Formation, Carbon County, Wyoming, and Moffat County, Colorado: Colorado School of Mines Masters Thesis, 85 p., pl. 1, approximate scale 1:62,500.
38. Melroy, W. W., Post, E. V., Ruess, P. J., Linnbeck, W. L., and Stadelman, R. R., 1966, Mineral resources of the Flat Top primitive area, Colorado: U.S. Geological Survey Bulletin 1230-C, 30 p., pl. 1, scale 1:125,000.
39. Miller, A. E., 1975, Geologic, energy and mineral resources map of Routt County, Colorado: Colorado Geological Survey Map Series 3, scale 1:125,720.
40. Miller, A. E., 1977, Geology of Moffat County, Colorado: Colorado Geological Survey Map Series 5, scale 1:125,720.
41. Murray, F. M., 1965, The stratigraphy and structural geology of the Grand Hoopack anticline, Colorado: University of Colorado Ph. D. dissertation, 219 p., pl. 1, scale 1:63,360.
42. Nutt, C. J., 1961, Geologic map and coal deposits of the western part of Moffat and Rio Blanco Counties, Colorado: U.S. Geological Survey Open-File Report O-251, sheet 1, scale 1:24,000.
43. O'Brien, C. C., 1955, Photogeologic interpretation of the Danforth hills anticline, Moffat and Rio Blanco Counties, Colorado, in Ely, J. B., and Oriel, S. S., eds., Guidebook to the geology of northwest Colorado, 6th annual field conference: International Association of Petroleum Geologists-Rocky Mountain Association of Geologists, pl. 11, no scale.
44. Oden, A. E., 1955, Generalized areal geologic map, northwestern Colorado and southeastern Wyoming, in Ely, J. B., and Oriel, S. S., eds., Guidebook to the geology of northwest Colorado, 6th annual field conference: International Association of Petroleum Geologists-Rocky Mountain Association of Geologists, pl. VII, approximate scale 1:600,000.
45. Price, J. N., 1978, Geology for land-use planning in the Craty area, Moffat County, Colorado: Colorado Geological Survey Map Series 7, pl. 1, approximate scale 1:12,700.
46. Rehms, M. C., 1980a, Geologic map and coal sections of the Thoroughbred quadrangle, Moffat and Rio Blanco Counties, Colorado: U.S. Geological Survey Open-File Report O-251, sheet 1, scale 1:24,000.
47. Rehms, M. C., 1980b, Geologic map and coal sections of the Sawmill Mountain quadrangle, Rio Blanco County, Colorado: U.S. Geological Survey Open-File Report O-251, sheet 1, scale 1:24,000.
48. Rehms, M. C., 1981, Geologic map and coal resources of the Easton Gulch quadrangle, Moffat County, Colorado: U.S. Geological Survey Coal Investigations Map C-99, scale 1:24,000.
49. Rehms, M. C., 1983a, Geologic map and coal sections of the Sawmill Mountain quadrangle, Rio Blanco County, Colorado: U.S. Geological Survey Coal Investigations Map C-99, scale 1:24,000.
50. Rehms, M. C., 1983b, Geologic map and coal sections of the Thoroughbred quadrangle, Moffat and Rio Blanco Counties, Colorado: U.S. Geological Survey Coal Investigations Map C-100, scale 1:24,000.
51. Ryan, T. A., 1977, Geology and coal resources of the Fossil Creek (MHA site and surrounding area), Routt County, Colorado: U.S. Geological Survey Open-File Report O-251, sheet 1, scale 1:24,000.
52. Sears, J. D., 1925, Geology and oil and gas prospects of part of Moffat County, Colorado, and southern Sweetwater County, Wyoming: U.S. Geological Survey Bulletin 751-C, p. 299-319, pl. XXIV, scale 1:125,000.
53. Sharp, S. L., 1962, Geology of the Pagoda quadrangle, northwestern Colorado: University of Colorado Ph. D. dissertation, 202 p., pl. 2, approximate scale 1:100,000.
54. Trask, R. J., Jr., 1956, Geology of the Buford area, Rio Blanco County, Colorado: University of Colorado Masters Thesis, 76 p., pl. 1, scale 1:33,680.
55. U.S. Geological Survey, 1988, Geologic and structure contour map of Moffat dome oil field and vicinity, Moffat County, Colorado: U.S. Geological Survey unnumbered map, scale 1:33,680.
56. Vickers, D. G., and Berry, G. M., 1949, Geologic and structure contour map of the Axtal coal district, Moffat County, Colorado: U.S. Geological Survey unnumbered map, scale 1:15,000.

ADDITIONAL REFERENCES

Colton, R. B., Hilligan, J. A., Patterson, R. E., and Anderson, L. M., 1975, Preliminary map of landslide deposits, Craty 1° x 2° quadrangle, northwestern Colorado: U.S. Geological Survey Miscellaneous Geologic Investigations Map I-972, scale 1:250,000.

Tweto, Oden, 1976, Geologic map of the Craty 1° x 2° quadrangle, northwestern Colorado: U.S. Geological Survey Miscellaneous Geologic Investigations Map I-972, scale 1:250,000.

U.S. Geological Survey, 1988, Land use and land cover, 1975-77, Craty, Colorado: Wyoming: U.S. Geological Survey Land Use Series Map L-179, scale 1:250,000.

This report is preliminary and has not been reviewed for conformity with U. S. Geological Survey editorial standards and stratigraphic nomenclature.

GEOLOGIC MAP INDEX OF THE MEEKER 1° X 1/2° QUADRANGLE, GARFIELD, MOFFAT, RIO BLANCO, & ROUTT COUNTIES, COLORADO

COMPILED BY  
M.E. BROWNFIELD AND E.A. JOHNSON  
1985