

H

H'

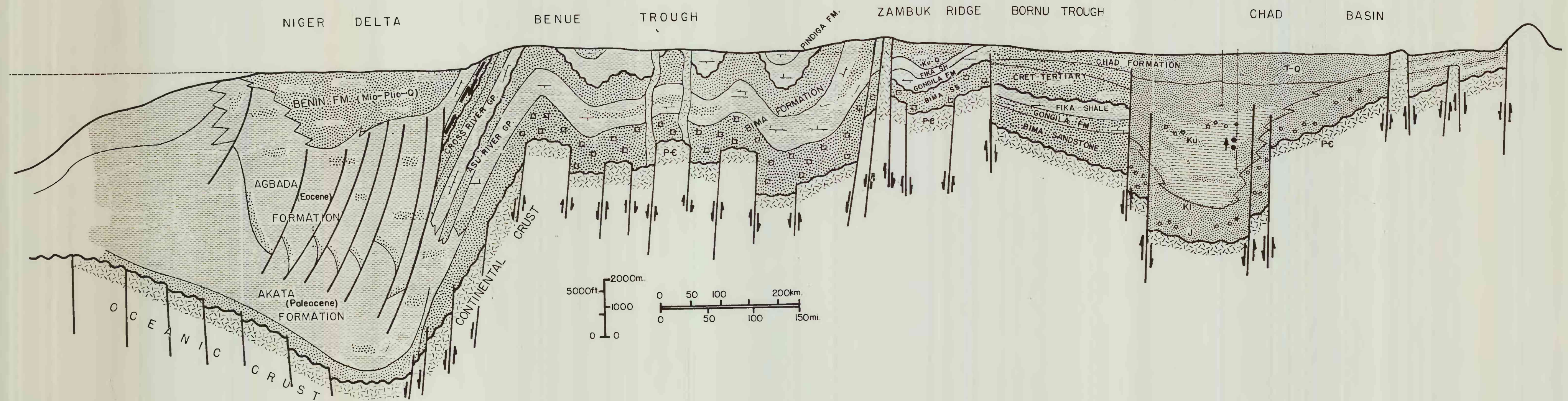


Figure 11.--Southwest-northeast structural-stratigraphic cross section H-H', Niger Delta to southern Chad, showing sedimentary facies, structural features, and oil and gas production. Datum is mean sea level. Sources of data: Turner (1971), Petters (1978b), Petters and Ekweozor (1982). Line of cross section shown on figure 4.