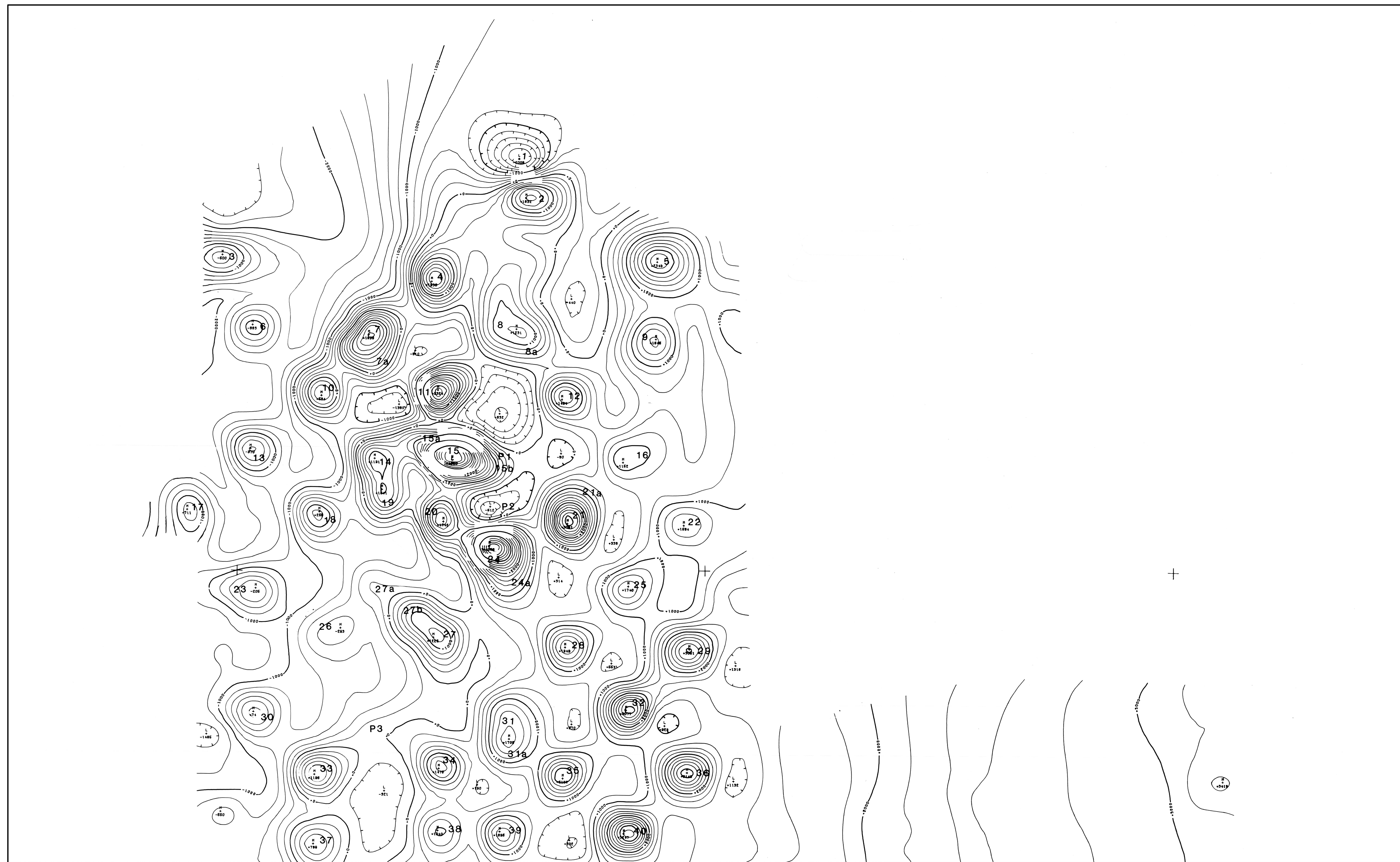


97° 18' 30"

97° 15' 30"

35° 44' 00"

35° 44' 00"



35° 42' 30"

35° 42' 30"

97° 18' 30"

elevation: 200 ft. above ground

ARCADIA, OK. TOTAL MAGNETICS (CENTIGAMMAS)

sheet 1

CONTOUR INT 200.0
1/ 6000.

flown by
U.S. GEOLOGICAL SURVEY

processed and plotted by
FUTURE RESOURCES, INC.

97° 15' 30"

june 1983

0.5 MILES