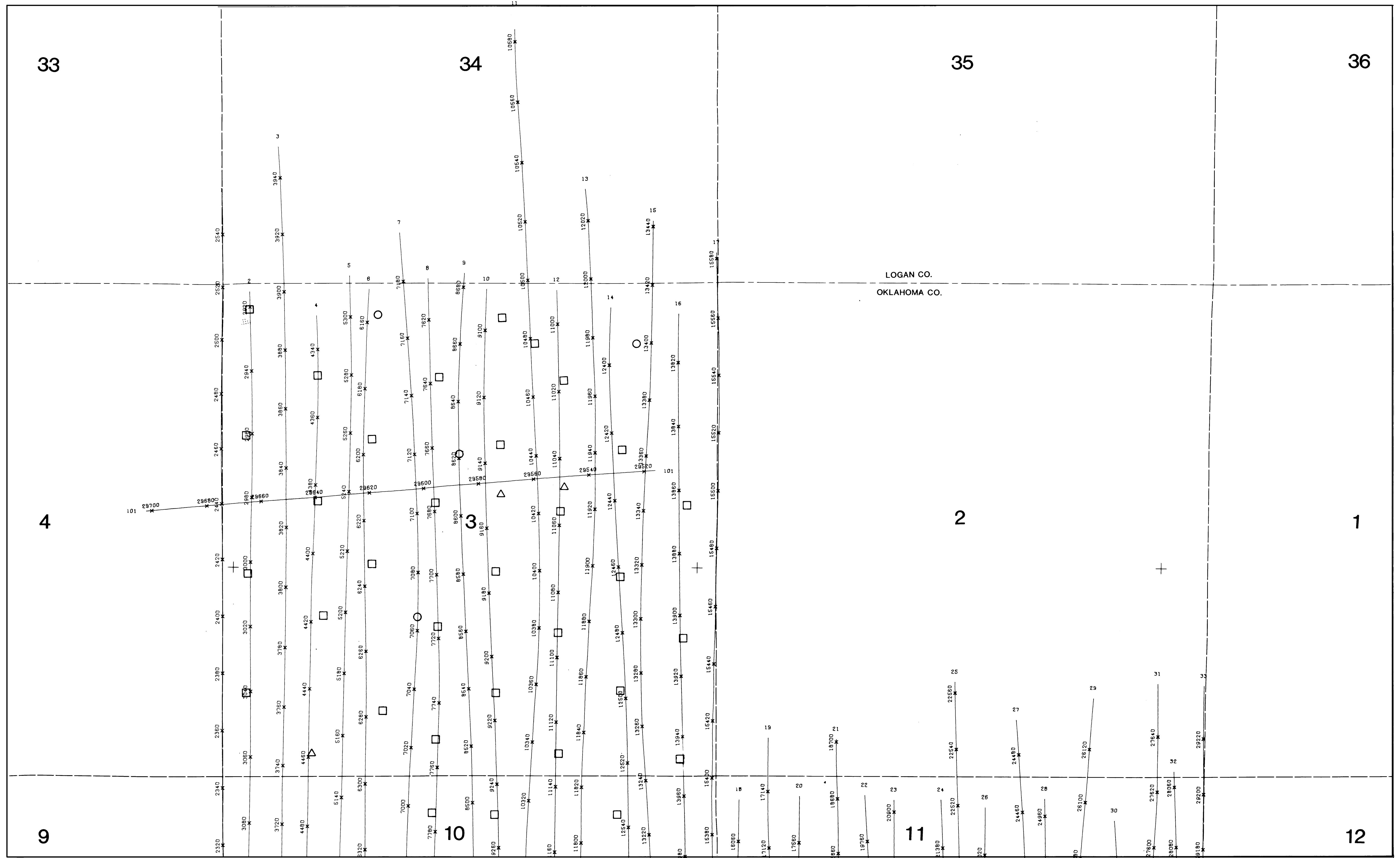


97° 18' 30"

97° 15' 30"

35° 44' 00"

35° 44' 00"



LOGAN CO.
OKLAHOMA CO.

T.15N.
T.14N.

35° 42' 30"

35° 42' 30"

97° 18' 30"

97° 15' 30"

elevation: 200 ft. above ground

0.5 MILE

KEY

□	ABANDON WELL
◇	PROBABLE WELL
△	POSSIBLE WELL
○	ACTIVE WELL

PROJ.#1115
ARCADIA, OK. sheet 1
1/6000.

U.S. GEOLOGICAL SURVEY

june 1983

processed and plotted by
FUTURE RESOURCES

flown by