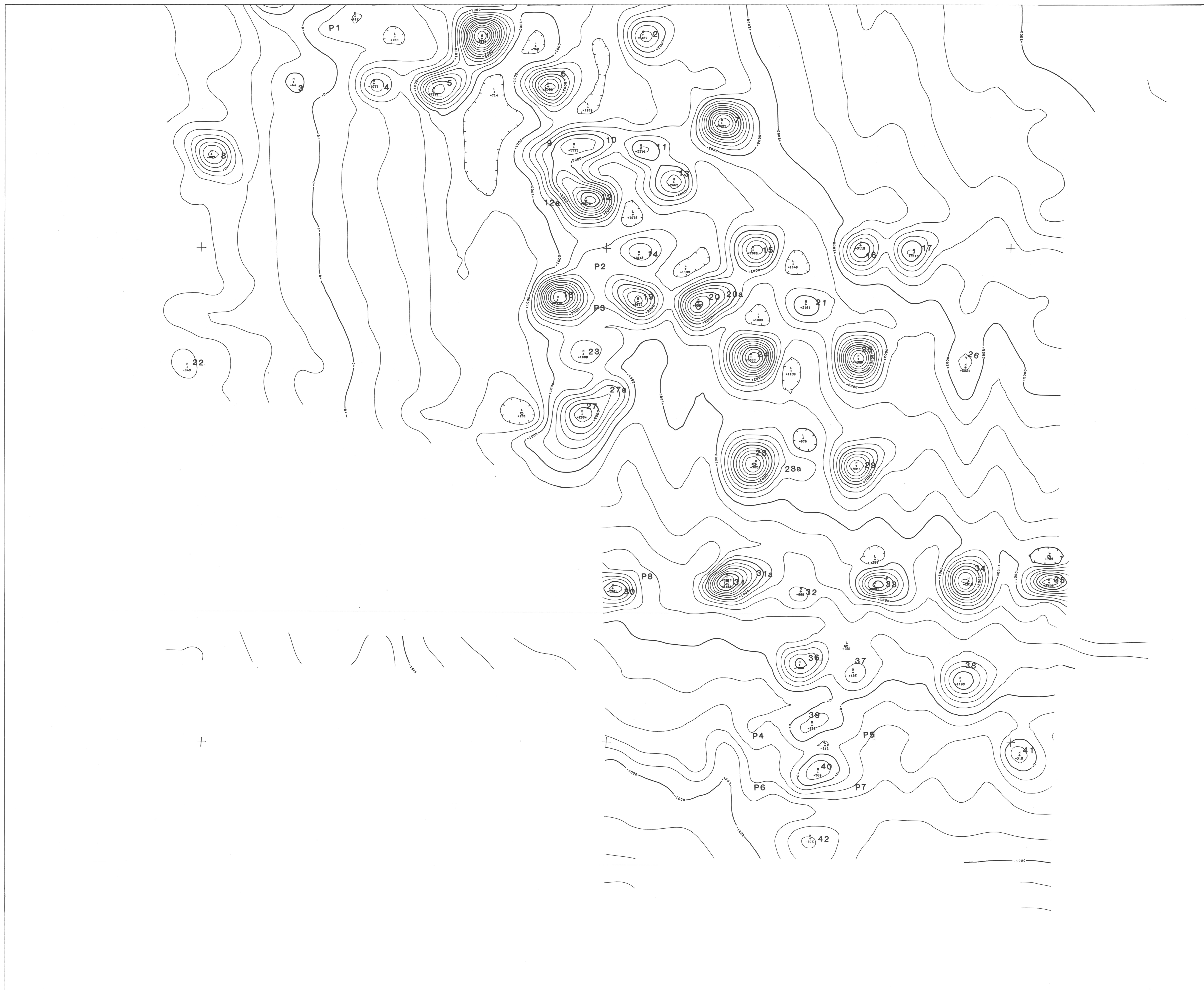


97° 18' 30"

97° 15' 30"

35° 42' 30"

35° 42' 30"



35° 40' 30"

35° 40' 30"

97° 18' 30" elevation: 200 ft. above ground

ARCADIA, OK. TOTAL MAGNETICS (CENTIGAMMAS)  
sheet 2 CONTOUR INT 200.0  
1/ 6000.

flown by  
U.S. GEOLOGICAL SURVEY  
june 1983

processed and plotted by 97° 15' 30"  
FUTURE RESOURCES, INC.

