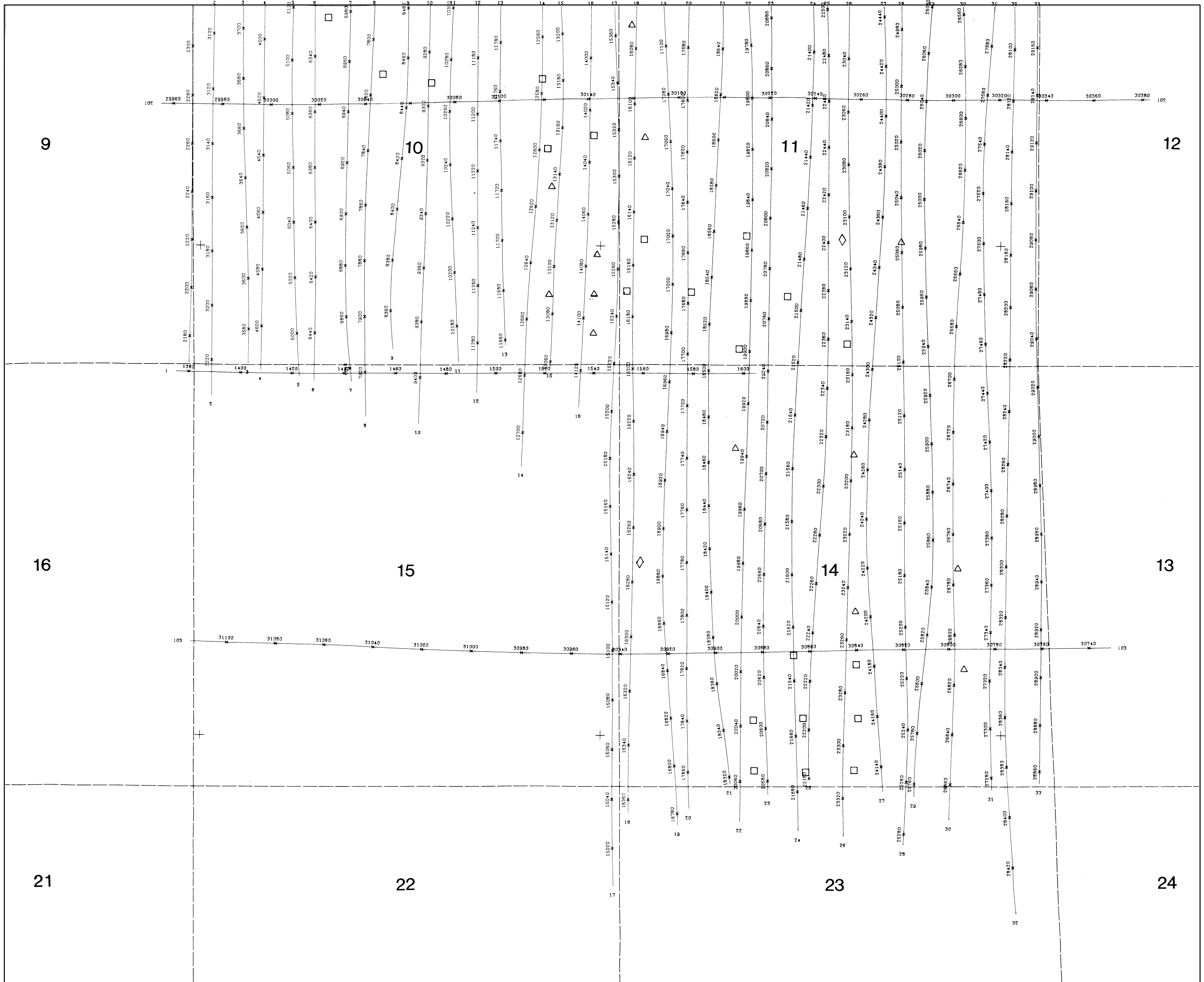


97°18'30"

97°15'30"

35°42'30"

35°42'30"



35°40'30"

35°40'30"

97°18'30" elevation: 200 ft. above ground

KEY

□	ABANDON WELL
◇	PROBABLE WELL
△	POSSIBLE WELL
○	ACTIVE WELL

PROJ.#1115
ARCADIA, OK .sheet 2

flown by
U.S.GEOLOGICAL SURVEY
june 1983

97°15'30"
processed and plotted by
FUTURE RESOURCES

1/6000. MILE 0.0 0.5 MILE