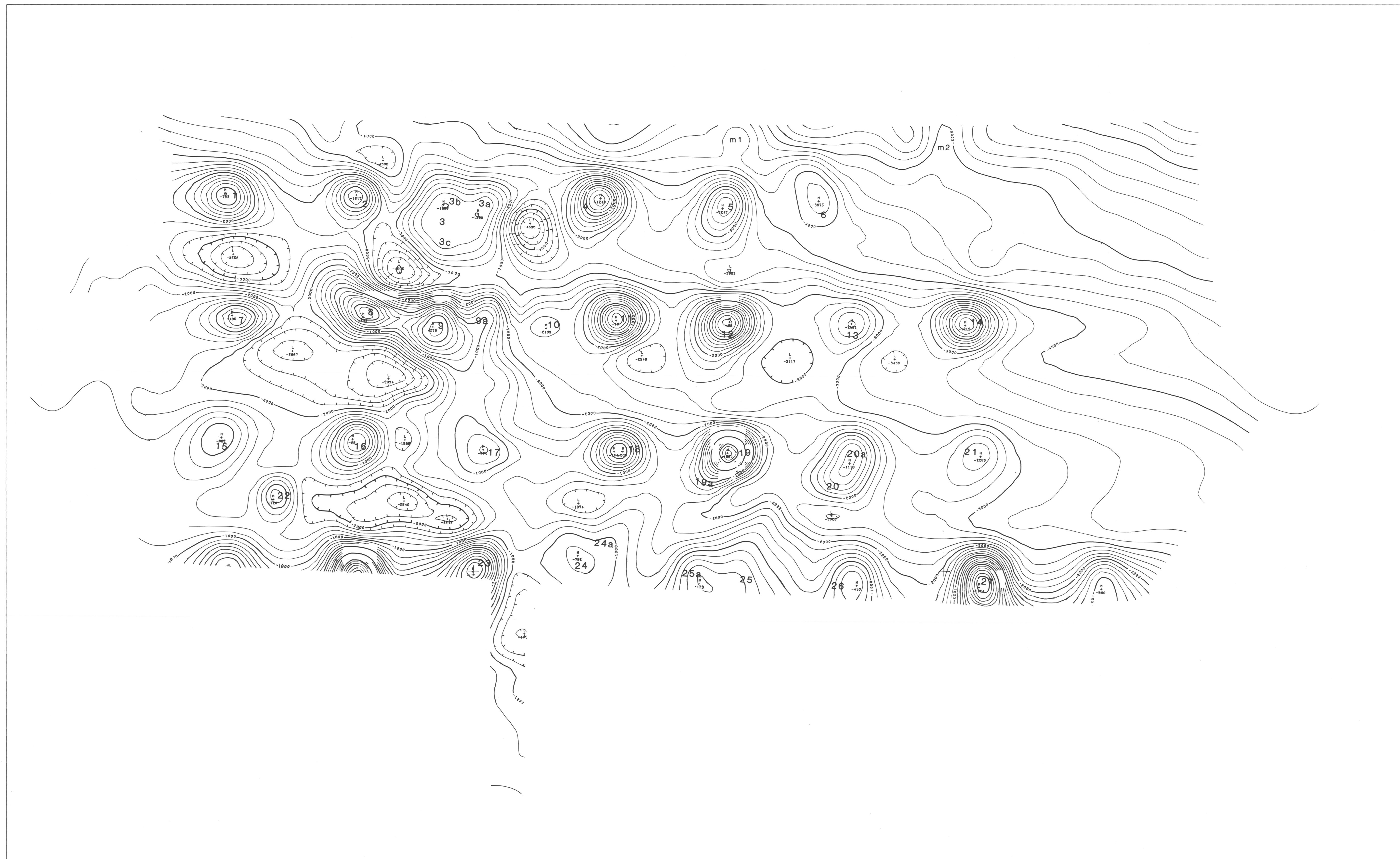


97° 39' 00"

97° 36' 00"

35° 22' 00"

35° 22' 00"



35° 20' 30"

35° 20' 30"

97° 39' 00" elevation: 200 ft. above ground

OKLAHOMA CITY, OK. TOTAL MAGNETICS (CENTIGAMMAS)

flown by
U.S. GEOLOGICAL SURVEY

processed and plotted by
FUTURE RESOURCES, INC.

sheet 1

CONTOUR INT 200.0
1/ 6000.

june 1983

0.5 MILES