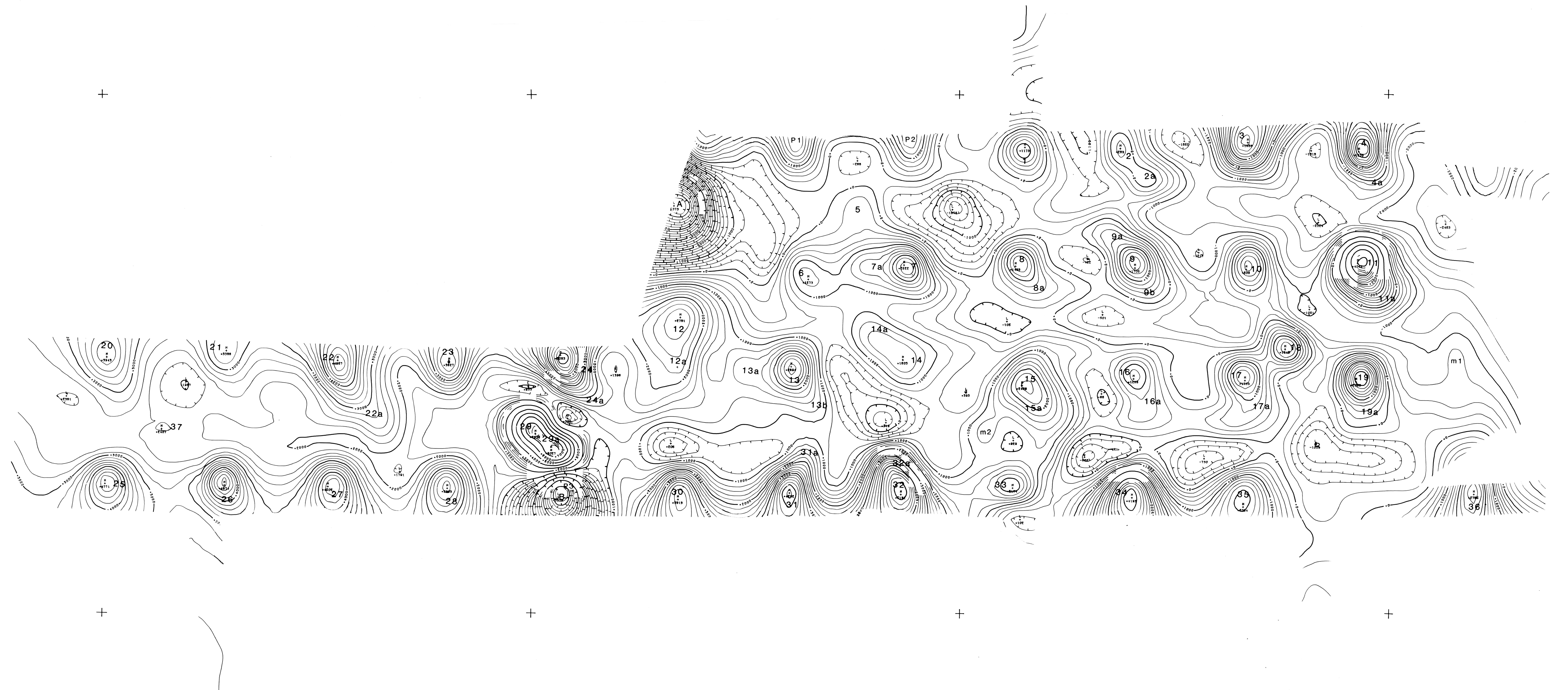


97° 37' 30"

97° 33' 30"

35° 20' 30"

35° 20' 30"



35° 18' 30"

35° 18' 30"

97° 37' 30"

97° 33' 30"

elevation: 200 ft. above ground

OKLAHOMA CITY, OK. TOTAL MAGNETICS (CENTIGAMMAS)

flown by

U.S. GEOLOGICAL SURVEY

processed and plotted by

FUTURE RESOURCES, INC.

sheet 2

CONTOUR INT 200.0  
1/ 6000.

june 1983

0.5 MILES