

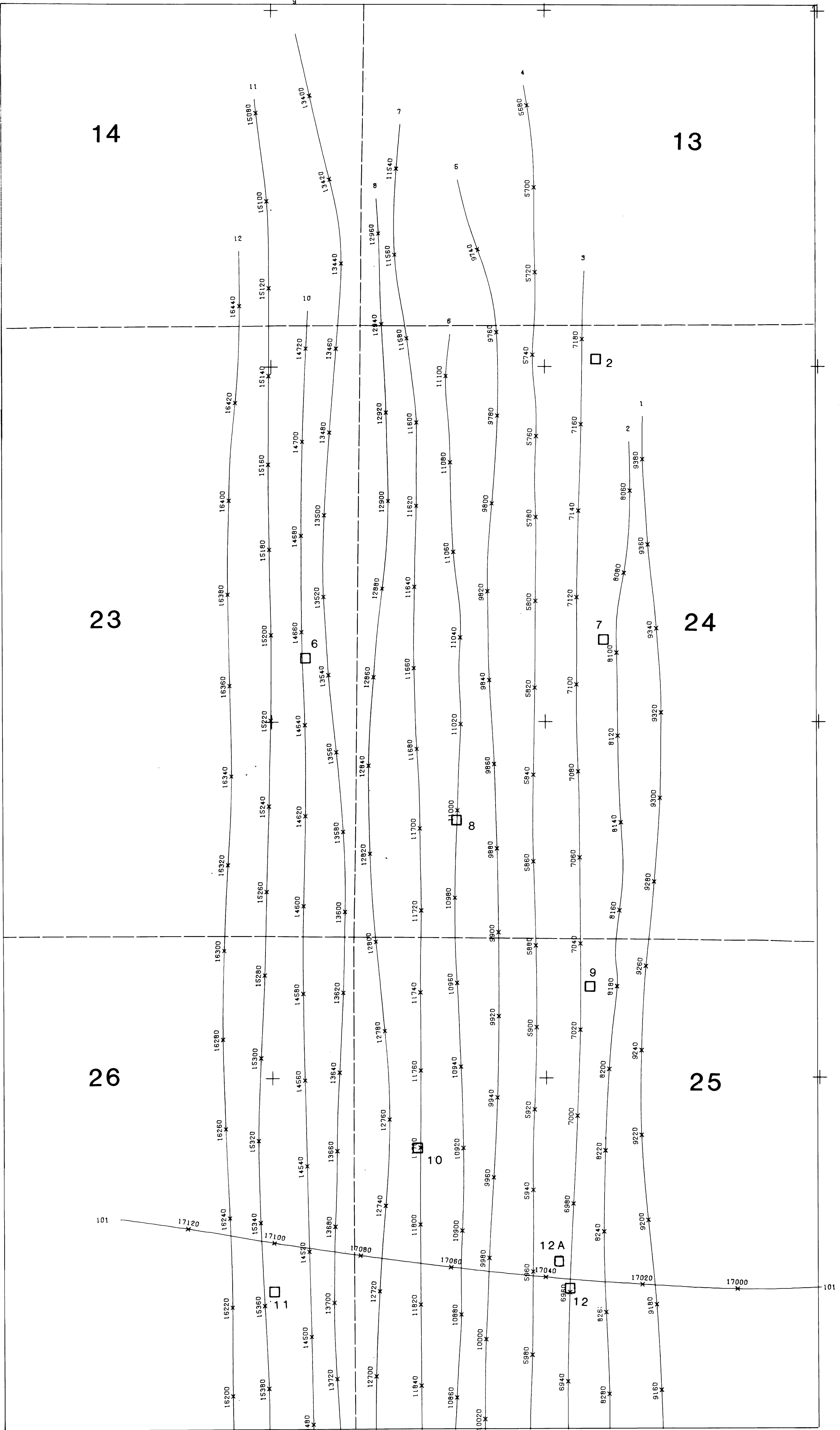
104°38'00"

104°36'30"

39°37'00"

june 1983

39°37'00"



39°35'00"

39°35'00"

104°38'00"

elevation: 200 ft. above ground

PINEY CREEK, CO.
sheet 1

MILE 0.0

0.5 MILE

1/6000.

104°36'30"

processed and plotted by

FUTURE RESOURCES

□	ABANDON WELL
◇	PROBABLE WELL
△	POSSIBLE WELL
○	ACTIVE WELL