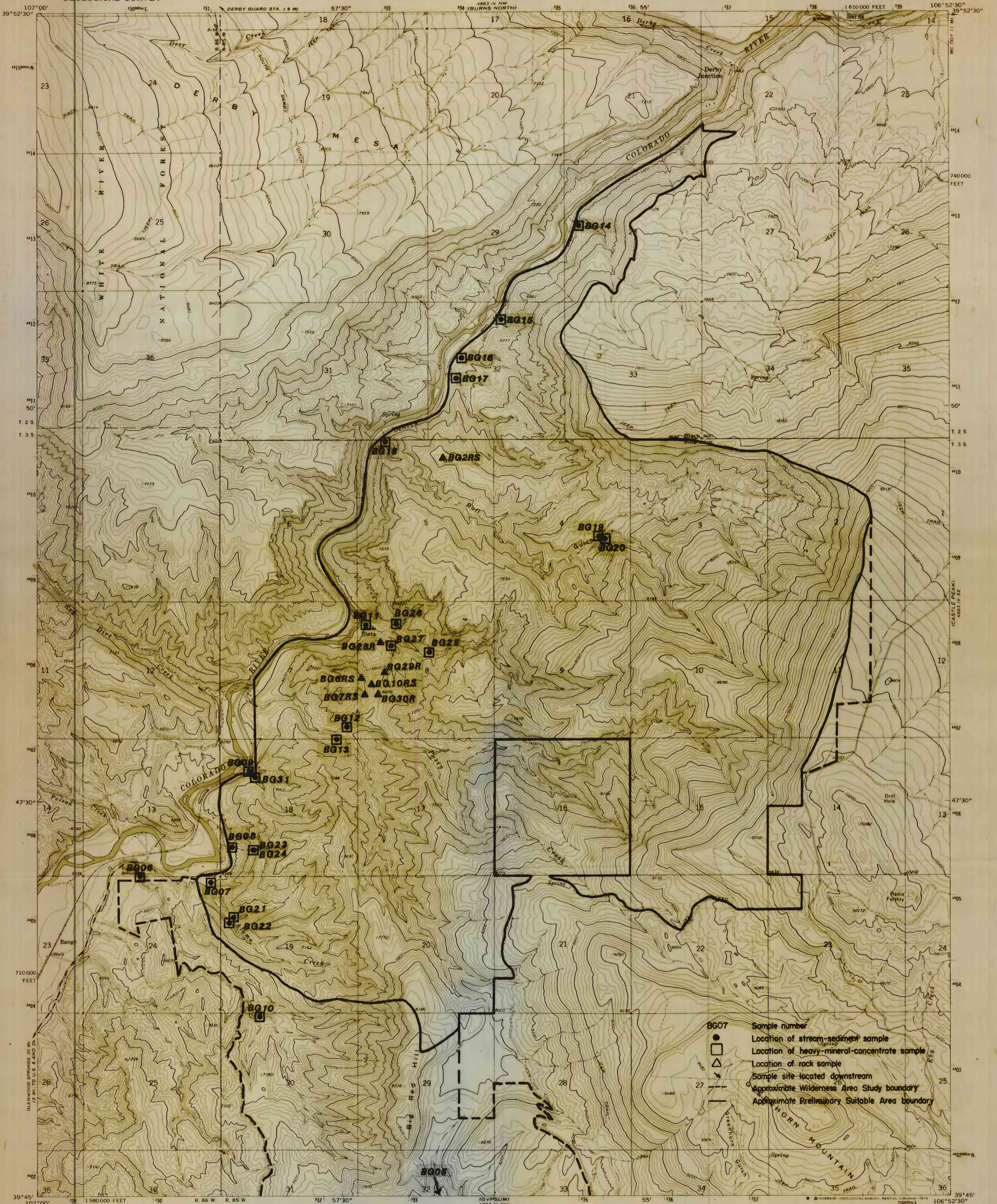


UNITED STATES
 DEPARTMENT OF THE INTERIOR
 GEOLOGICAL SURVEY

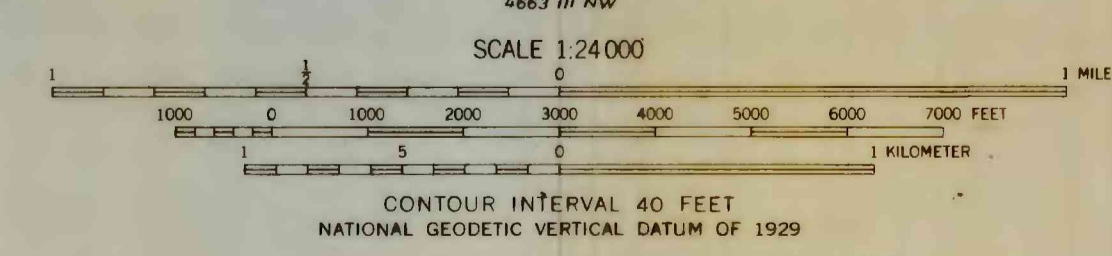
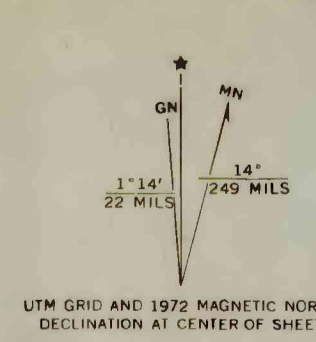
BURNS SOUTH QUADRANGLE
 COLORADO—EAGLE CO.
 7.5 MINUTE SERIES (TOPOGRAPHIC)



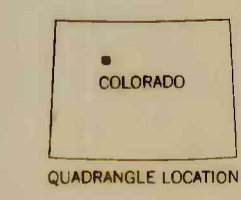
- Legend:**
- Sample number
 - Location of stream-sediment sample
 - Location of heavy-mineral-concentrate sample
 - △ Location of rock sample
 - Sample site located downstream
 - Approximate Wilderness Area Study boundary
 - Approximate Preliminary Suitable Area boundary

- ROAD CLASSIFICATION**
- Primary highway, hard surface
 - Light-duty road, hard or improved surface
 - Secondary highway, hard surface
 - Unimproved road
 - Interstate Route
 - U. S. Route
 - State Route

Mapped, edited, and published by the Geological Survey
 Control by USGS and USC&GS
 Topography by photogrammetric methods from aerial photographs taken 1971. Field checked 1972
 Projection and 10,000-foot grid ticks: Colorado coordinate system, central zone (Lambert conformal conic)
 1000-meter Universal Transverse Mercator grid ticks, zone 13, shown in blue. 1927 North American datum
 Fine red dashed lines indicate selected fence lines
 This report is preliminary and has not been reviewed for conformity with U.S. Geological Survey editorial standards.



CONTOUR INTERVAL 40 FEET
 NATIONAL GEODETIC VERTICAL DATUM OF 1929



BURNS SOUTH, COLO.
 N3945-W10652.5/7.5

1972

AMS 4663 IV SW—SERIES V877

SAMPLE LOCALITY MAP OF THE BULL GULCH WILDERNESS STUDY AREA EAGLE COUNTY, COLORADO

BY
 D.E. Detra, J.R. Hassener, and L.A. Bradley