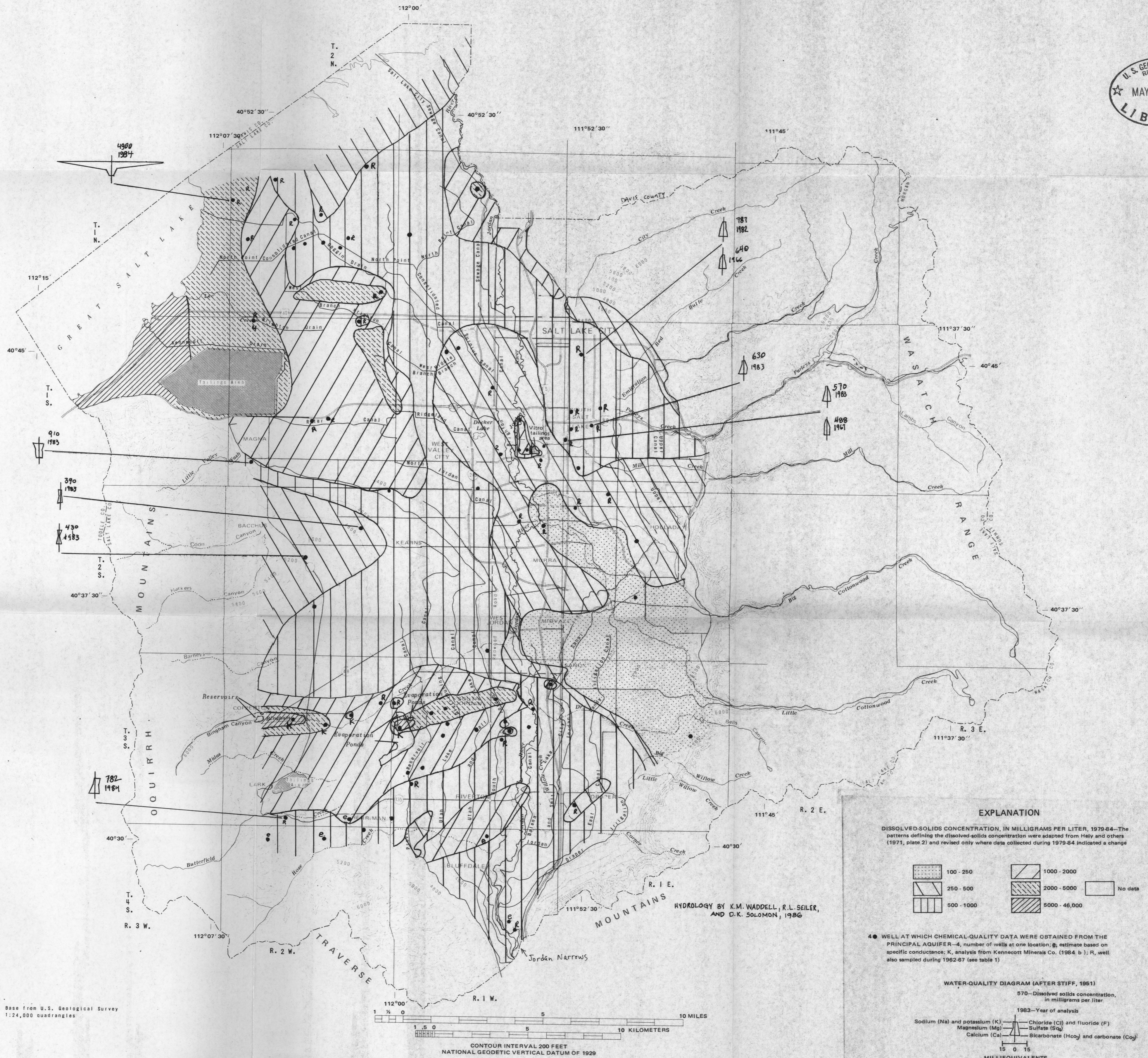
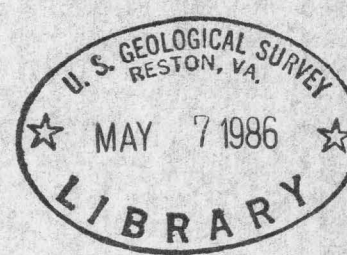
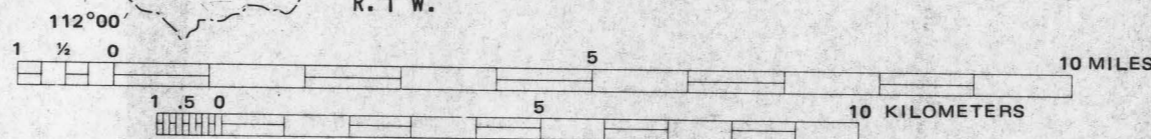


(200)
R.290
10.86-138



Base from U.S. Geological Survey
1:24,000 quadrangles



CONTOUR INTERVAL 200 FEET
NATIONAL GEODETIC VERTICAL DATUM OF 1929

MAP SHOWING DISSOLVED-SOLIDS CONCENTRATION OF WATER IN THE PRINCIPAL AQUIFER AND LOCATIONS WHERE SAMPLES WERE COLLECTED, 1979-84, SALT LAKE VALLEY, UTAH