

DRILL HOLE: USGS A-84-1, Tikishla Park, Anchorage, Alaska

LOCATION: NE1/4 NE1/4 SW1/4, sec. 21, T. 13N.,
R. 3W., Seward Meridian

ALTITUDE: 115 ft (35 m)

CALIPER LOG

TEMPERATURE LOG

ELECTRIC LOG

RADIATION LOGS

Logging speed: 10 ft./min.
(3.3 m/min.), up

Logging speed: 15 ft./min.
(4.6 m/min.), down

SINGLE-POINT
RESISTANCE

NATURAL GAMMA

GAMMA-GAMMA

NEUTRON

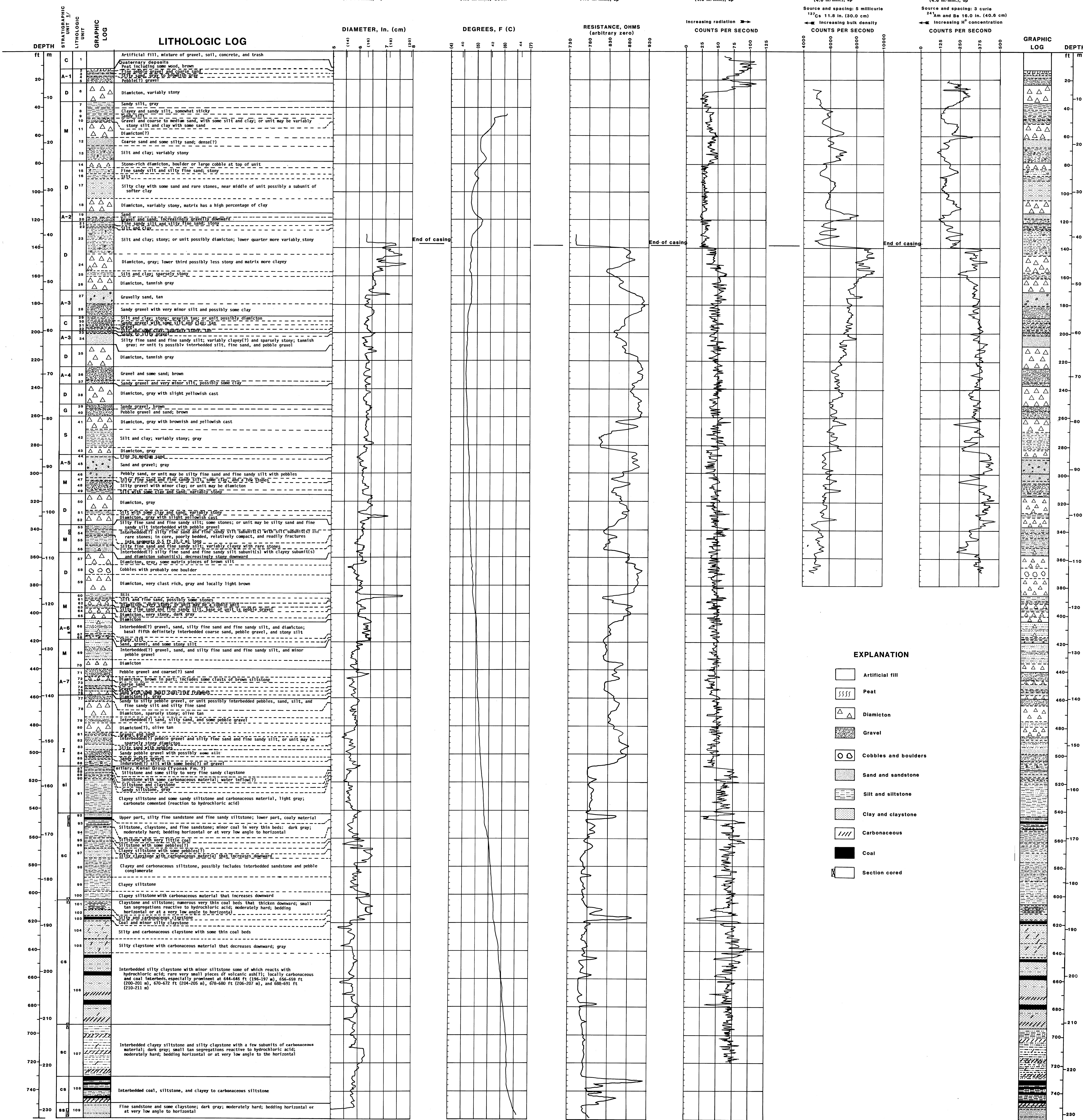


PLATE 1.-- LITHOLOGIC LOG AND COMPOSITE OF GEOPHYSICAL LOGS FOR
DRILL HOLE USGS A-84-1, TIKISHLA PARK, ANCHORAGE, ALASKA

By

Lynn A. Yehle, Jack K. Odum, Henry R. Schmoll, and Larry L. Dearborn

This report is preliminary and has not been reviewed for conformity with
U.S. Geological Survey editorial standards and stratigraphic nomenclature.
Any use of trade names is for descriptive purposes only and does not imply
endorsement by the USGS.