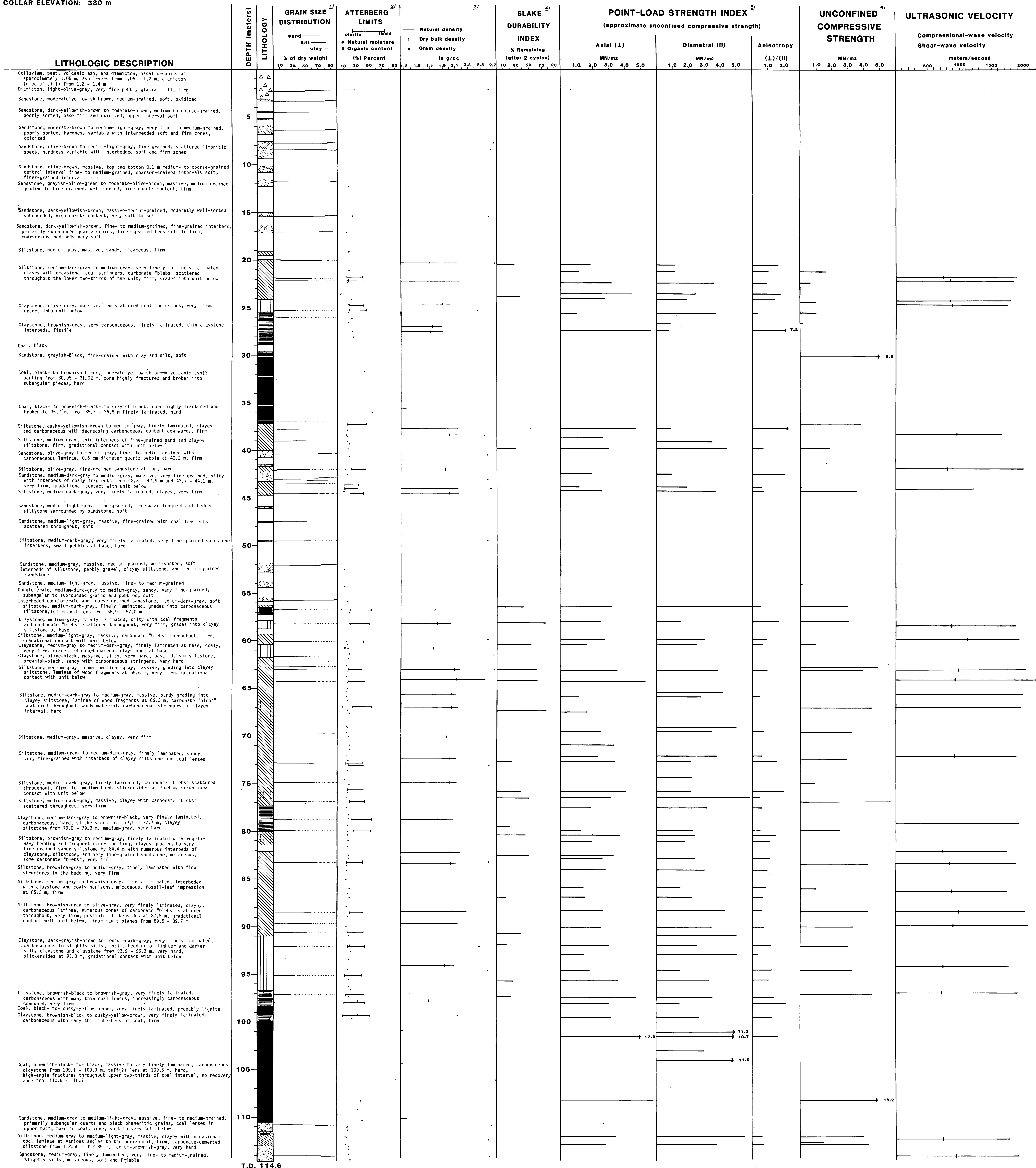


HOLE NO: CE 82-1

LOCATION: SW 1/4 SW 1/4 Section 24, T. 13 N., R. 13 W.,  
Tyonek A-5 Quadrangle, Alaska

COLLAR ELEVATION: 380 m



EXPLANATION

- △ △ DIAMICTON
- SANDSTONE
- ▨ SILTSTONE
- ▧ CLAYSTONE
- COAL
- ▩ CLAYSTONE-CARBONACEOUS
- ▨ Clayey
- ▨ Silty
- ▨ Carbonaceous

- 1/ Tested in accordance with ASTM D 422-63.
- 2/ Tested in accordance with ASTM D 423 and D 424.
- 3/ Tested in accordance with ASTM D 854 and Chleborad and others, 1975.
- 4/ Tested in accordance with method described by Franklin and Chandra, 1972.
- 5/ Tested in accordance with method described by Brook and Franklin, 1972. Calculated in meganewtons/meters<sup>2</sup> using the formula:  $U_1(450) \times 24$ .  
▨ Diametral test (loaded parallel to bedding planes)  
▨ Axial test (loaded perpendicular to bedding planes)
- 6/ Tested in accordance with ASTM D 21166-66.

Plate 4.--Lithologic and geotechnical data log for U.S. Geological Survey drill hole CE 82-1.

By  
Jack K. Odum  
1986

This report is preliminary and has not been reviewed for conformity with U.S. Geological Survey editorial standards and stratigraphic nomenclature. Any use of trade names is for descriptive purposes only and does not imply endorsement by the USGS.