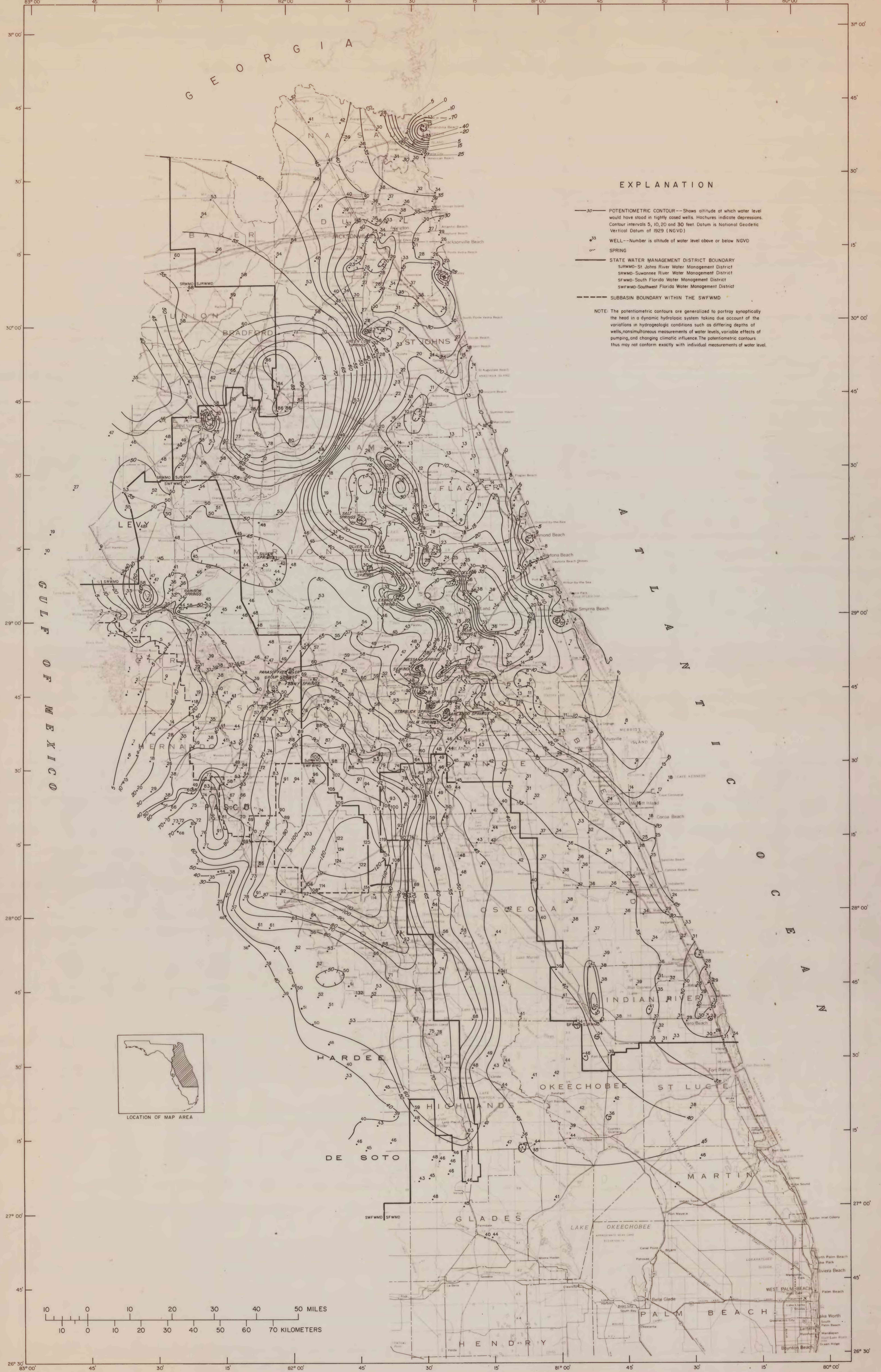


PREPARED IN COOPERATION WITH THE
ST. JOHNS RIVER WATER MANAGEMENT DISTRICT
AND

BREVARD, DUVAL, AND VOLUSIA COUNTIES; SOUTH FLORIDA WATER MANAGEMENT DISTRICT;
SOUTHWEST FLORIDA WATER MANAGEMENT DISTRICT; CITY OF COCOA; AND
REEDY CREEK IMPROVEMENT DISTRICT

DEPARTMENT OF THE INTERIOR
UNITED STATES GEOLOGICAL SURVEY

OPEN-FILE REPORT 86-408-W
80700



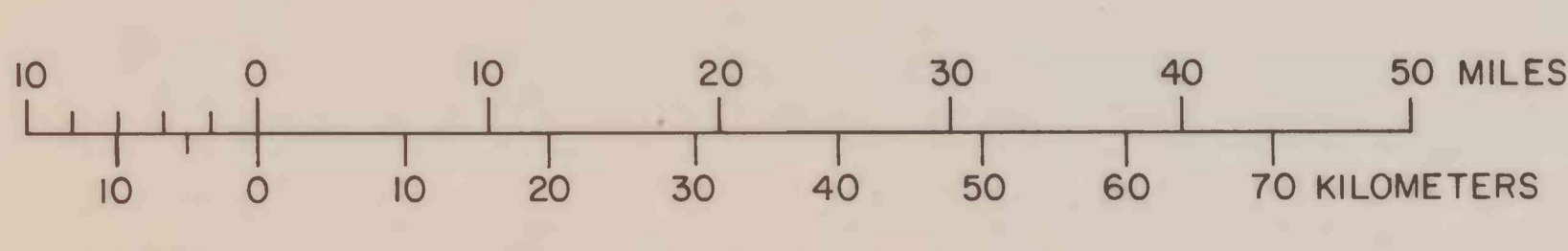
EXPLANATION

- 30 — POTENTIOMETRIC CONTOUR—Shows altitude at which water level would have stood in tightly cased wells. Hochures indicate depressions. Contour intervals 5, 10, 20 and 30 feet. Datum is National Geodetic Vertical Datum of 1929 (NGVD)
- 33 • WELL—Number is altitude of water level above or below NGVD
- SPRING
- STATE WATER MANAGEMENT DISTRICT BOUNDARY
 SJRWMD—St. Johns River Water Management District
 SRWMD—Suwannee River Water Management District
 SFWMD—South Florida Water Management District
 SWFWMD—Southwest Florida Water Management District
- - - - SUBBASIN BOUNDARY WITHIN THE SWFWMD

NOTE: The potentiometric contours are generalized to portray synoptically the head in a dynamic hydrologic system taking due account of the variations in hydrogeologic conditions such as differing depths of wells, nonsimultaneous measurements of water levels, variable effects of pumping, and changing climatic influence. The potentiometric contours thus may not conform exactly with individual measurements of water level.



LOCATION OF MAP AREA



POTENTIOMETRIC SURFACE OF THE UPPER FLORIDAN AQUIFER IN THE ST. JOHNS RIVER
WATER MANAGEMENT DISTRICT AND VICINITY, FLORIDA, MAY 1986

By
G. R. Schiner
1986

Copies of this map can be purchased from:
Open File Services Section
U. S. Geological Survey
Box 25425, Federal Center
Denver, Colorado 80225
Telephone: (303) 234-5888