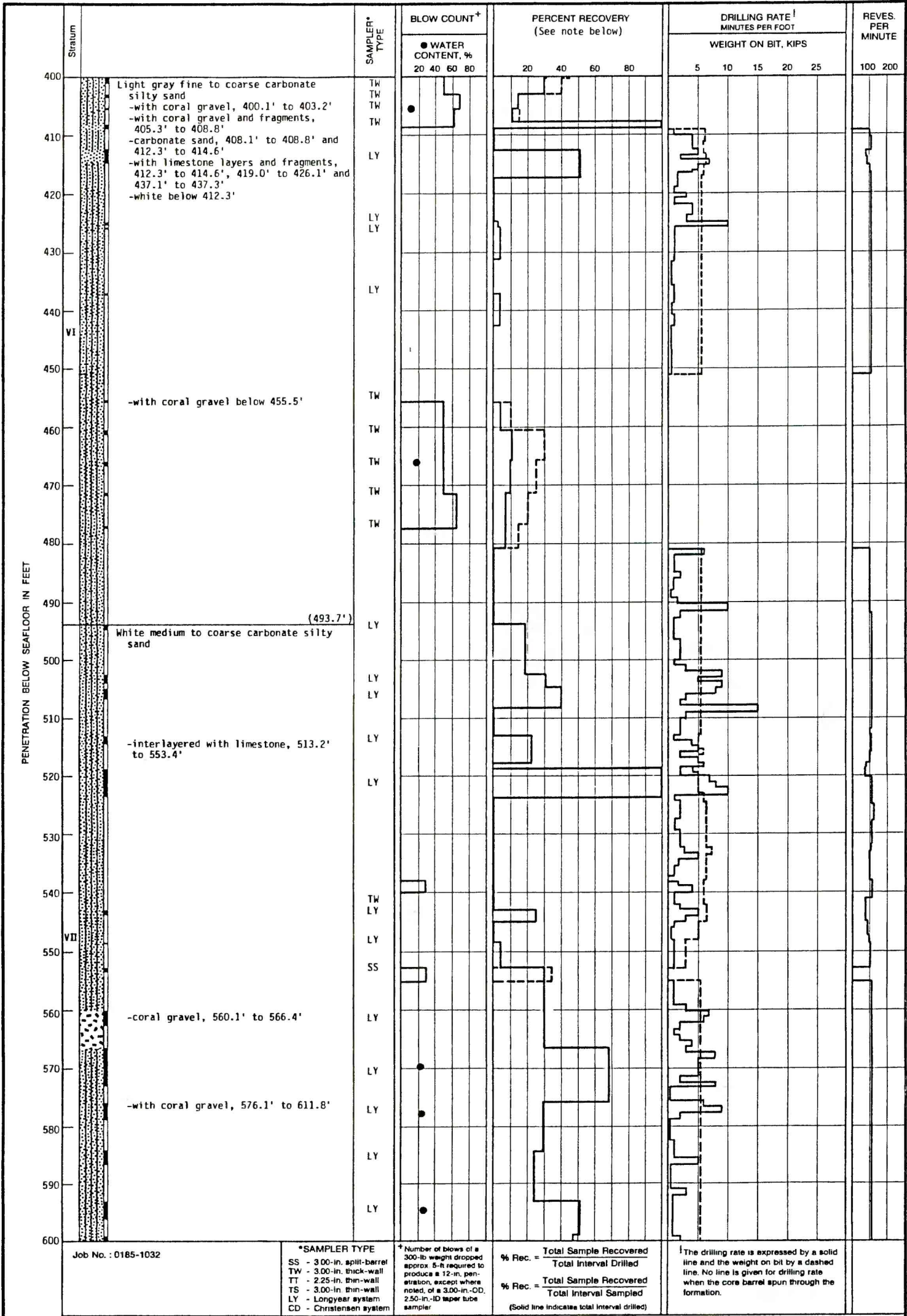


11-67

PLATE 16C



Job No. : 0185-1032

\*SAMPLER TYPE  
 SS - 3.00-in. split-barrel  
 TW - 3.00-in. thick-wall  
 TT - 2.25-in. thin-wall  
 TS - 3.00-in. thin-wall  
 LY - Longyear system  
 CD - Christensen system

<sup>+</sup>Number of blows of a 300-lb weight dropped approx 5-ft required to produce a 12-in. penetration, except where noted, of a 3.00-in.-OD, 2.50-in.-ID taper tube sampler

% Rec. =  $\frac{\text{Total Sample Recovered}}{\text{Total Interval Drilled}}$   
 % Rec. =  $\frac{\text{Total Sample Recovered}}{\text{Total Interval Sampled}}$   
 (Solid line indicates total interval drilled)

<sup>1</sup>The drilling rate is expressed by a solid line and the weight on bit by a dashed line. No line is given for drilling rate when the core barrel spun through the formation.

**LOG AND TEST RESULTS**  
**BORING OBZ-4, OAK CRATER**  
**ENEWETAK ATOLL, MARSHALL ISLANDS**