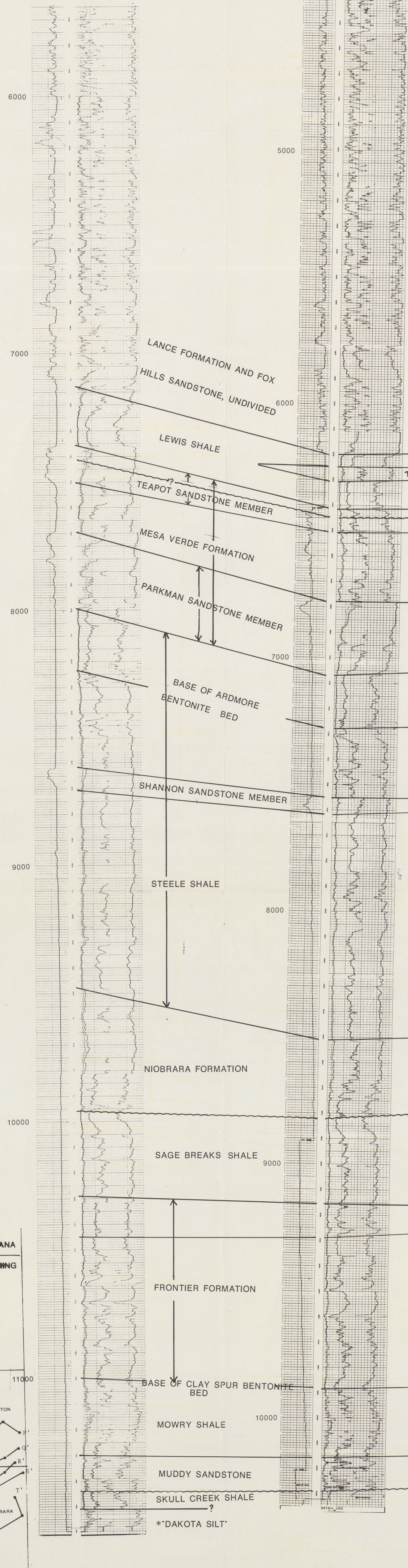


E

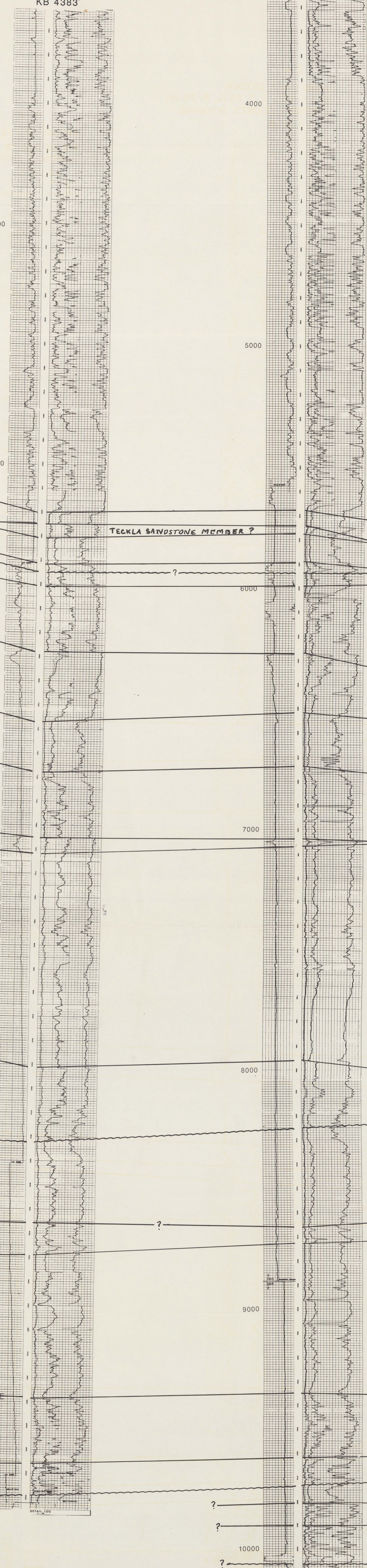
E 35

ANSCHUTZ-MONCRIEF-SOHIO  
1 FAIRBANKS-KREZELOK  
NW NW SEC. 3, T. 53 N., R. 82 W.,  
SHERIDAN COUNTY, WYOMING  
KB 4692'



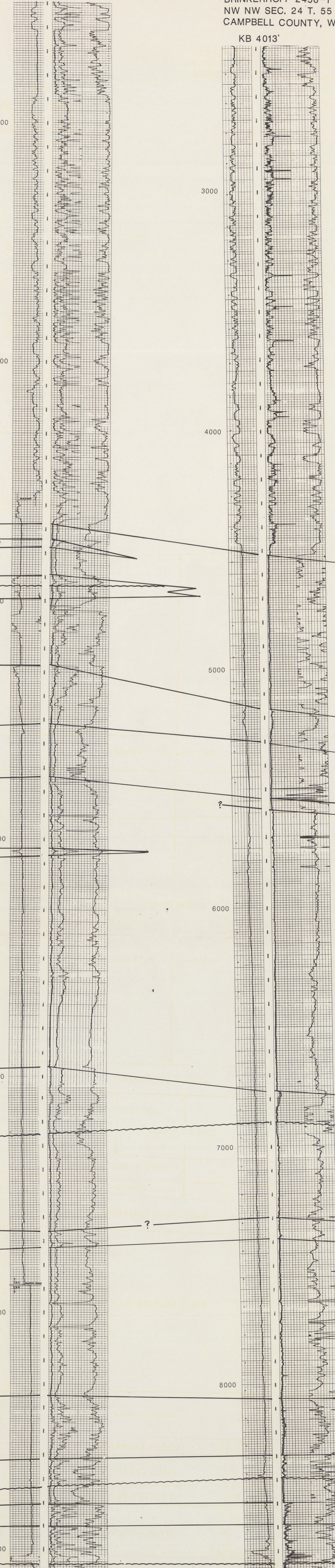
E 36

ANSCHUTZ-1 FADDIS-KENNEDY  
NW NE SEC. 33, T. 55 N., R. 80 W.,  
SHERIDAN COUNTY, WYOMING  
KB 4383'



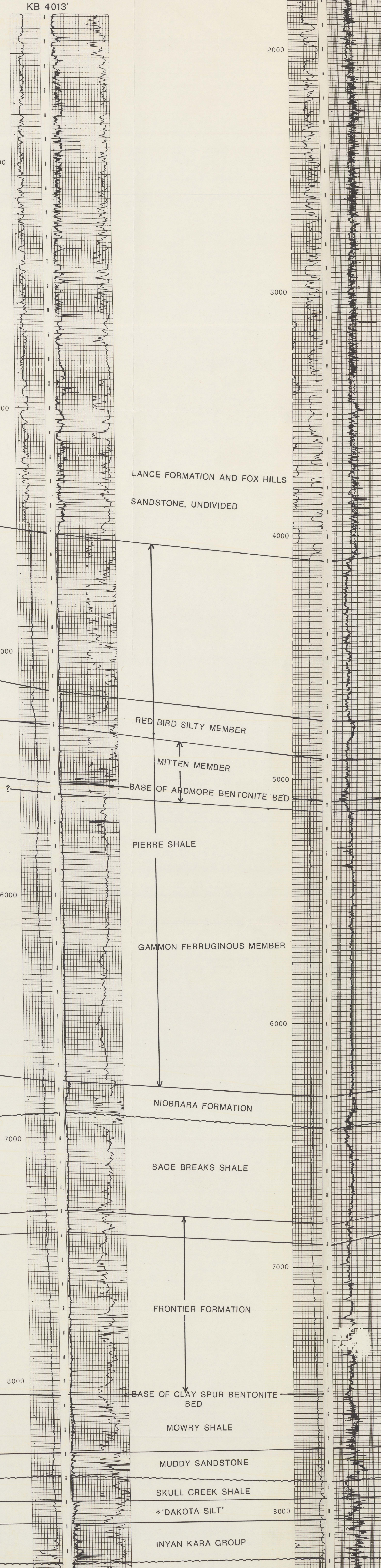
E 37

CLEARY 1-33 FED.  
NE NE SEC. 33, T. 55 N., R. 79 W.,  
SHERIDAN COUNTY, WYOMING  
KB 4039'



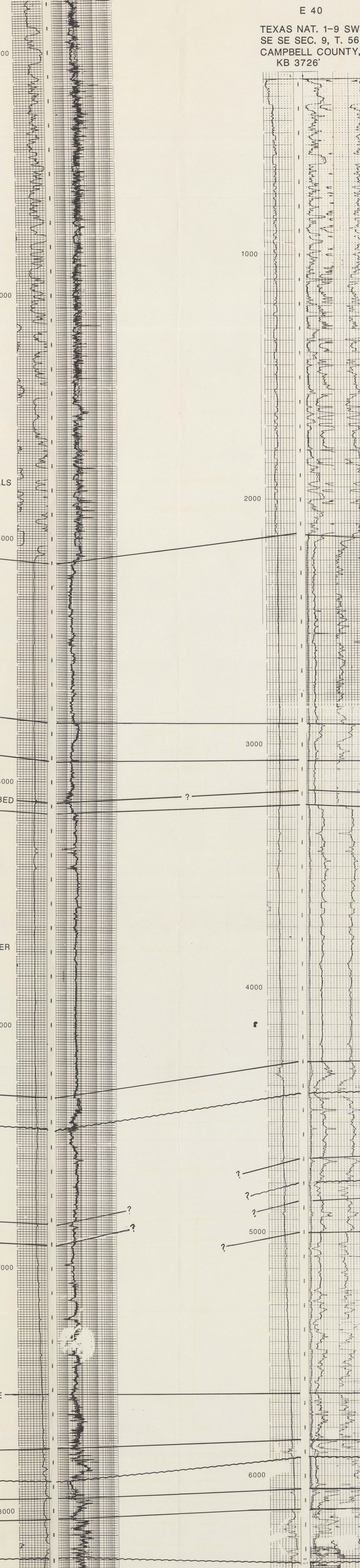
E 38

BRINKERHOFF 2456-1  
NW NW SEC. 24, T. 55 W., R. 76 W.,  
CAMPBELL COUNTY, WYOMING  
KB 4013'



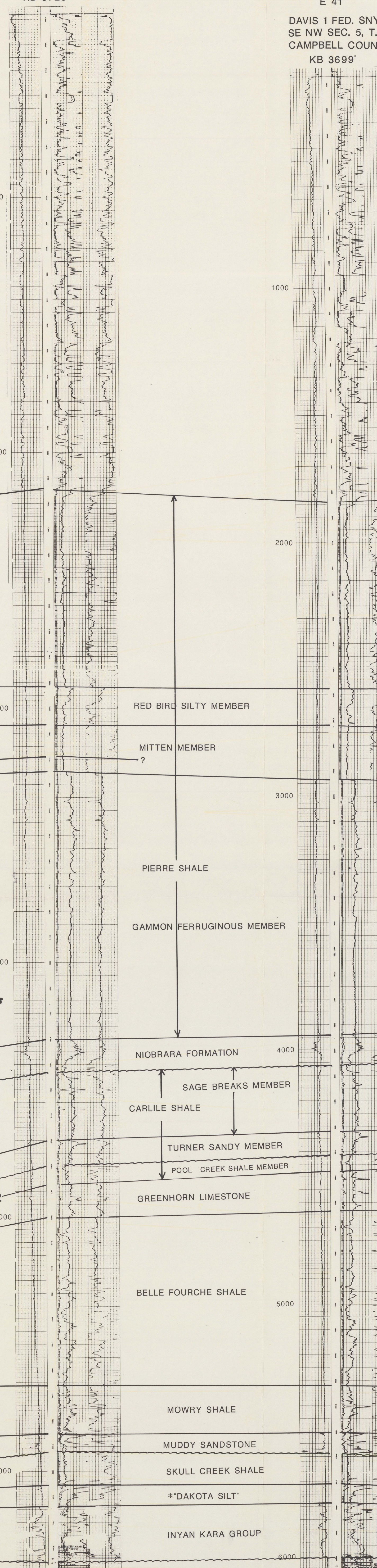
E 39

AMARILLO DOW STATE 1  
SE SW SEC. 25, T. 55 N., R. 74 W.,  
CAMPBELL COUNTY, WYOMING  
KB 4183'



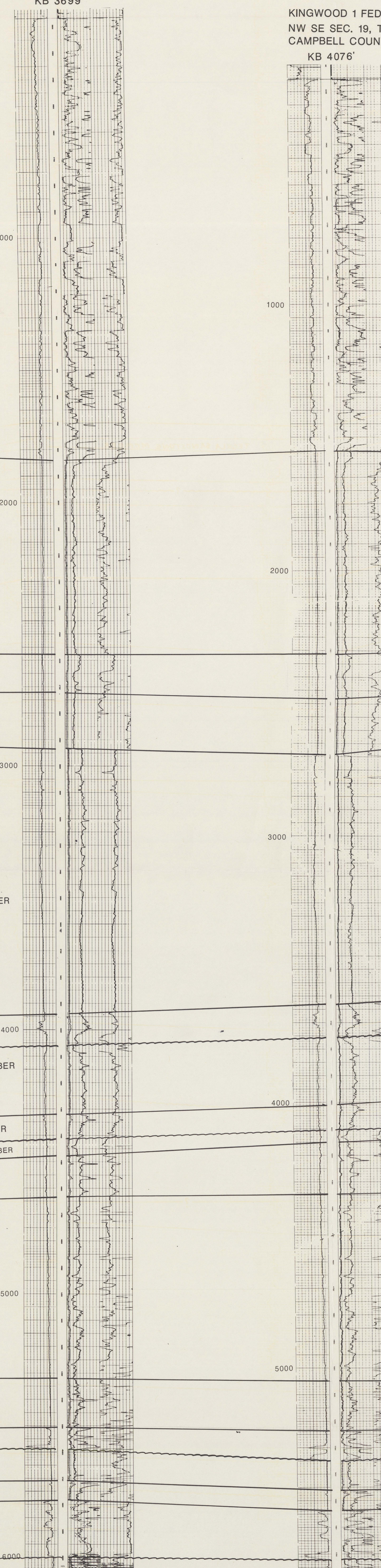
E 40

TEXAS NAT. 1-9 SWINEHEART  
SE SE SEC. 9, T. 58 N., R. 71 W.,  
CAMPBELL COUNTY, WYOMING  
KB 3726'



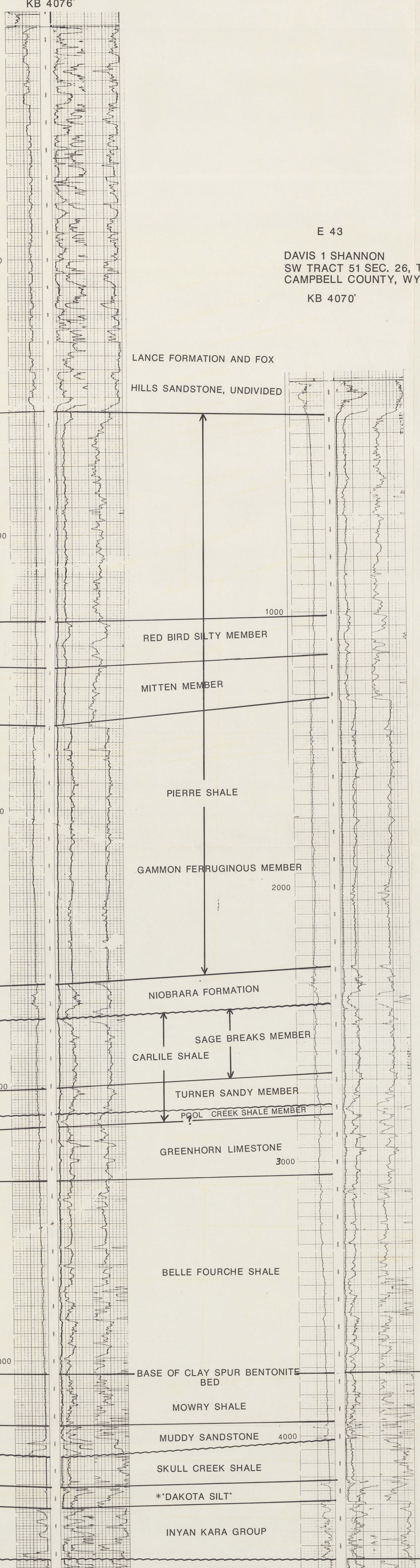
E 41

DAVIS 1 FED. SNYDER  
SE NW SEC. 5, T. 55 N., R. 70 W.,  
CAMPBELL COUNTY, WYOMING  
KB 3699'



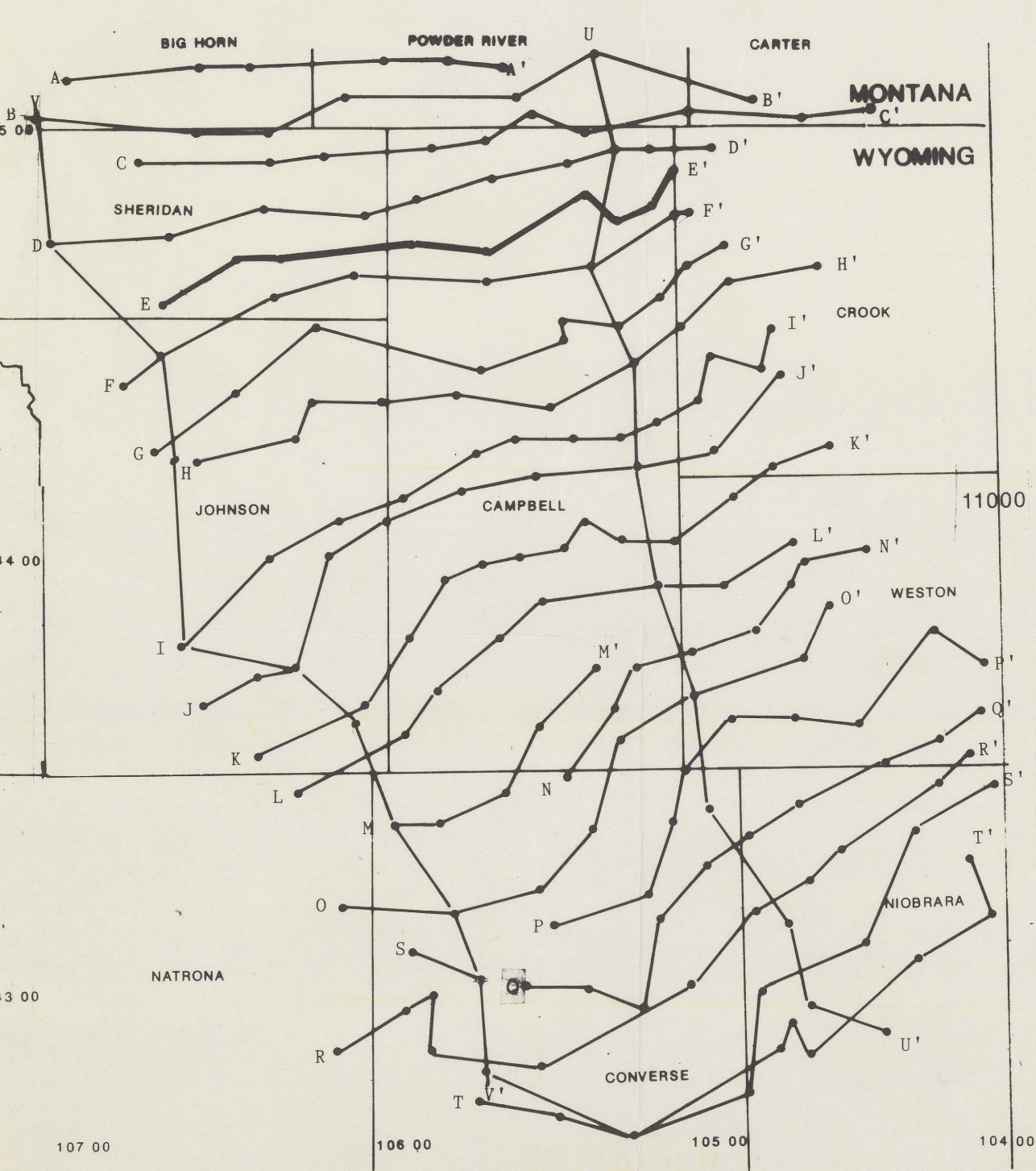
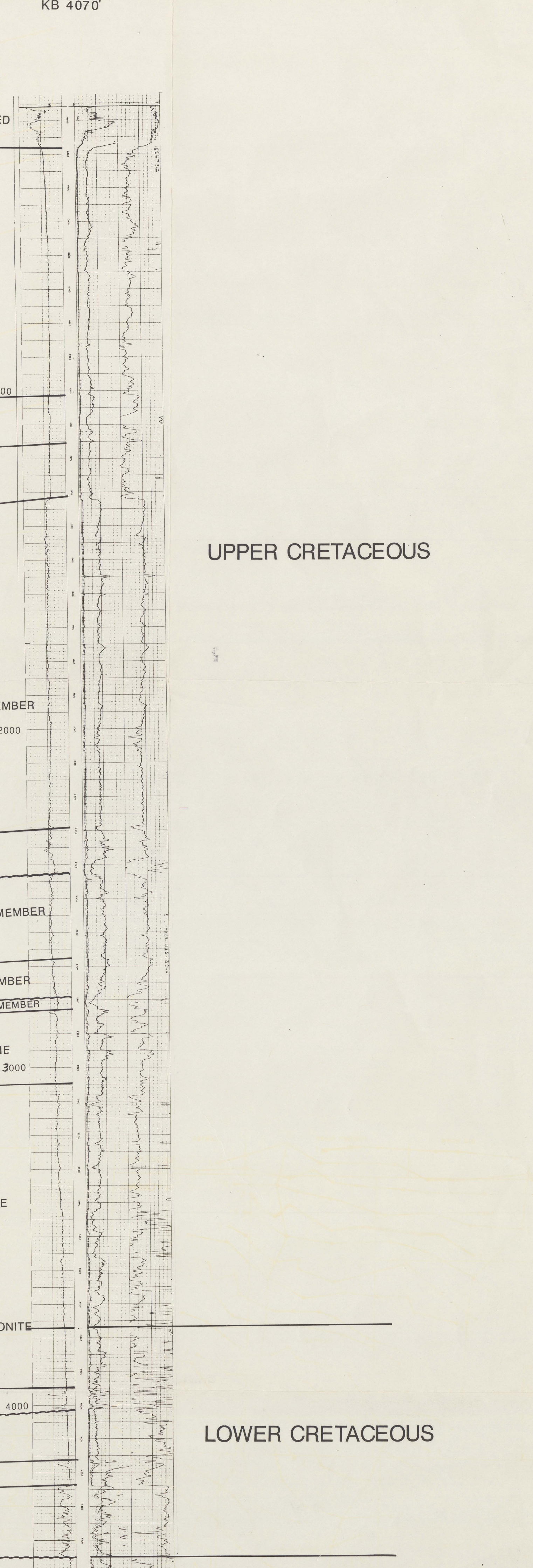
E 42

KINGWOOD 1 FED.  
NW SE SEC. 19, T. 56 N., R. 69 W.,  
CAMPBELL COUNTY, WYOMING  
KB 4076'



E 43

DAVIS 1 SHANNON  
SW TRACT 51 SEC. 26, T. 57 N., R. 69 W.,  
CAMPBELL COUNTY, WYOMING  
KB 4070'

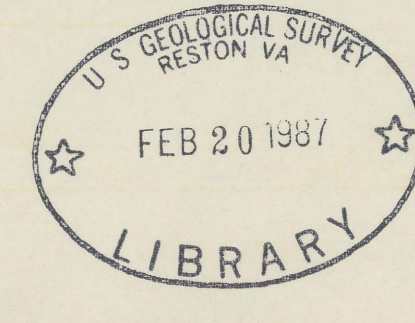
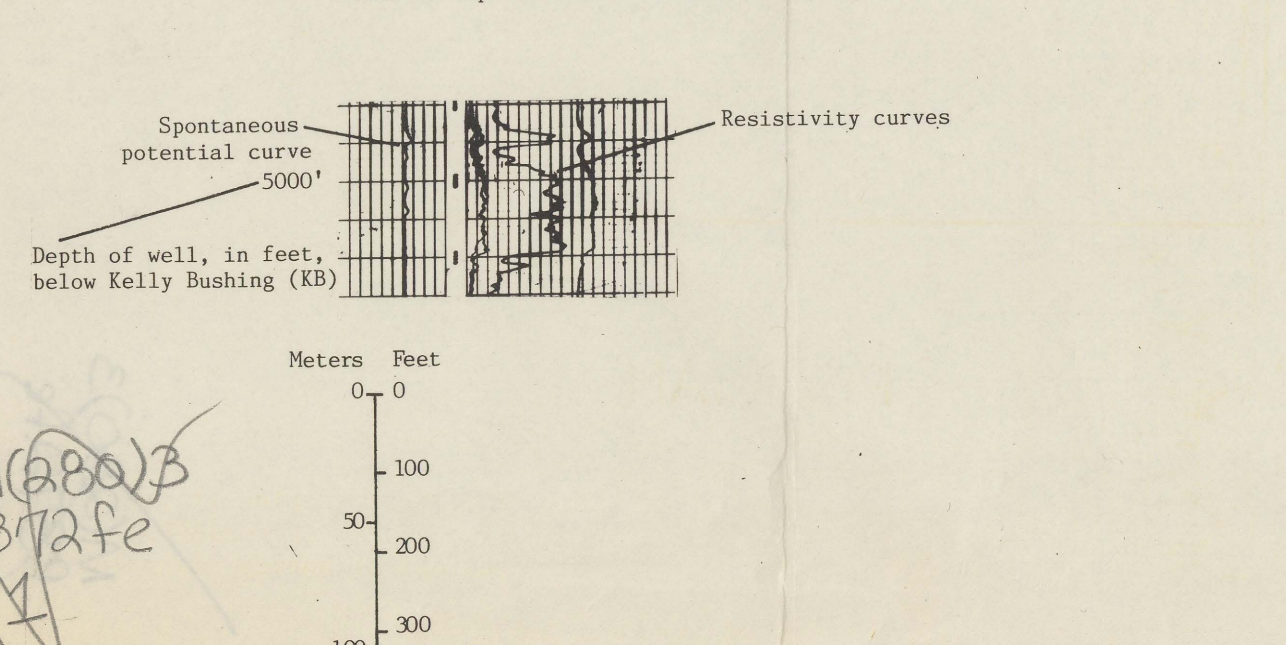


Map showing location of selected wells drilled for oil and gas in the Powder River Basin.

This cross section was prepared in part for the Evolution of Sedimentary Basins Program.

**EXPLANATION**

- Correlation line as Group, Formation, Member, or bentonite boundaries - Queried where correlation is uncertain.
- Correlation along an unconformity - Queried where correlation is uncertain.
- \* Widely used subsurface terminology.
- None in top of Lower Cretaceous Henry Shale.



### STRATIGRAPHIC CROSS SECTION E - E' SHOWING ELECTRIC LOGS OF UPPER CRETACEOUS AND OLDER ROCKS, POWDER RIVER BASIN SHERIDAN AND CAMPBELL COUNTIES, WYOMING

BY JAMES E. FOX 1986

SYSTEM OR SERIES

UPPER CRETACEOUS

LOWER CRETACEOUS

JURASSIC

TRIASSIC

PERMIAN

G3701  
M(200)  
R29a  
050  
86-465-E  
c.1