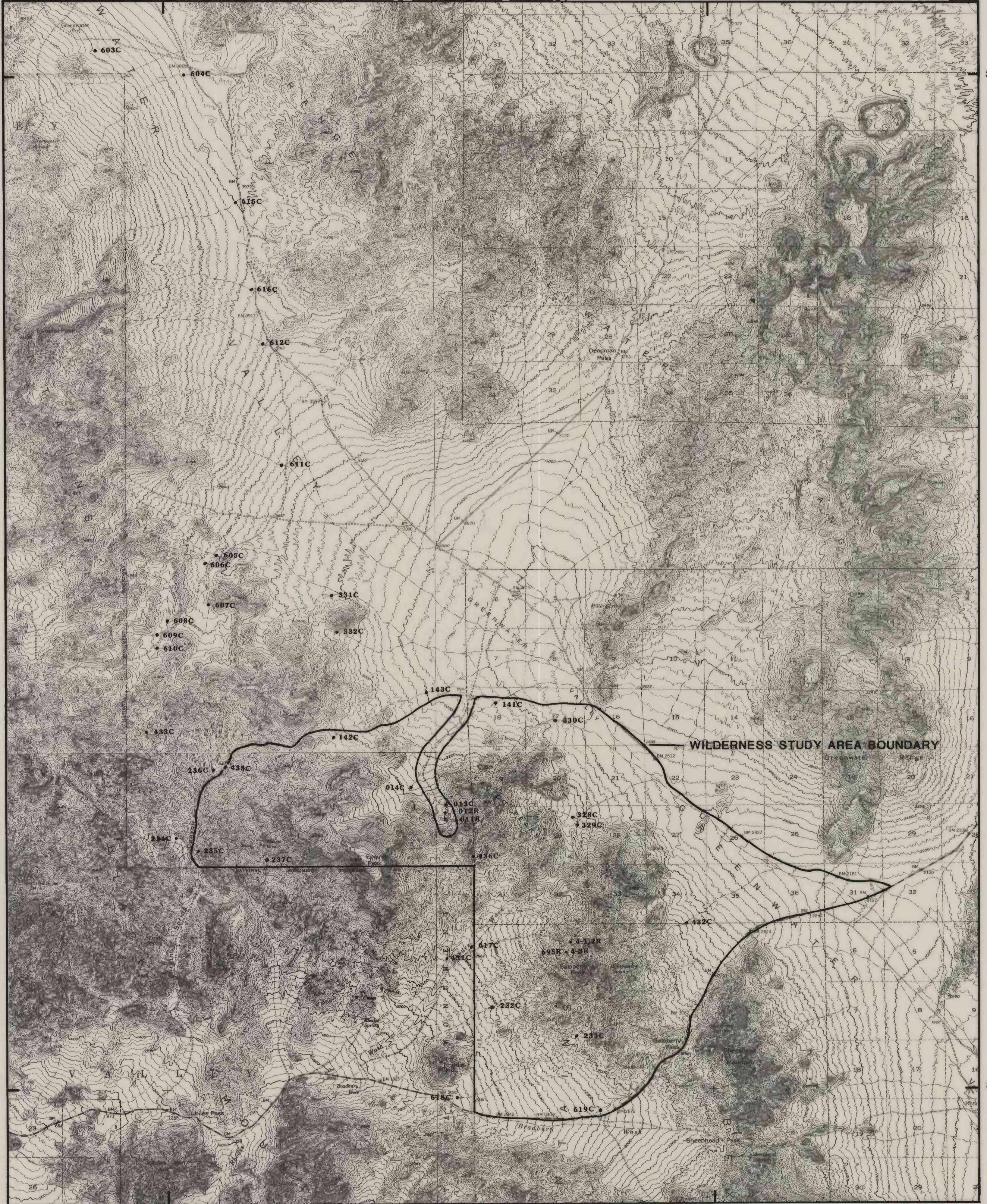


116° 35'

116° 25'

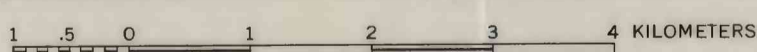
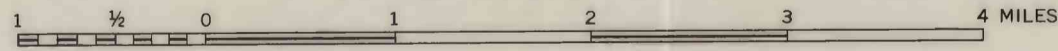
36° 10'



35° 55'

Base from U.S. Geological Survey

SCALE 1:62 500



CONTOUR INTERVAL FEET
DATUM IS MEAN SEA LEVEL

This map is preliminary and has not been edited or reviewed for conformity with U.S. Geological Survey editorial standards

PLATE 1 - LOCALITIES OF HEAVY-MINERAL CONCENTRATES (C) AND ROCKS (R) FROM THE GREENWATER VALLEY WILDERNESS STUDY AREA (CDCA-148), SAN BERNARDINO COUNTY, CALIFORNIA

By

B. M. Adrian, J. G. Frisken, Paul Briggs, J. G. Crock, and N. M. Conklin

1986