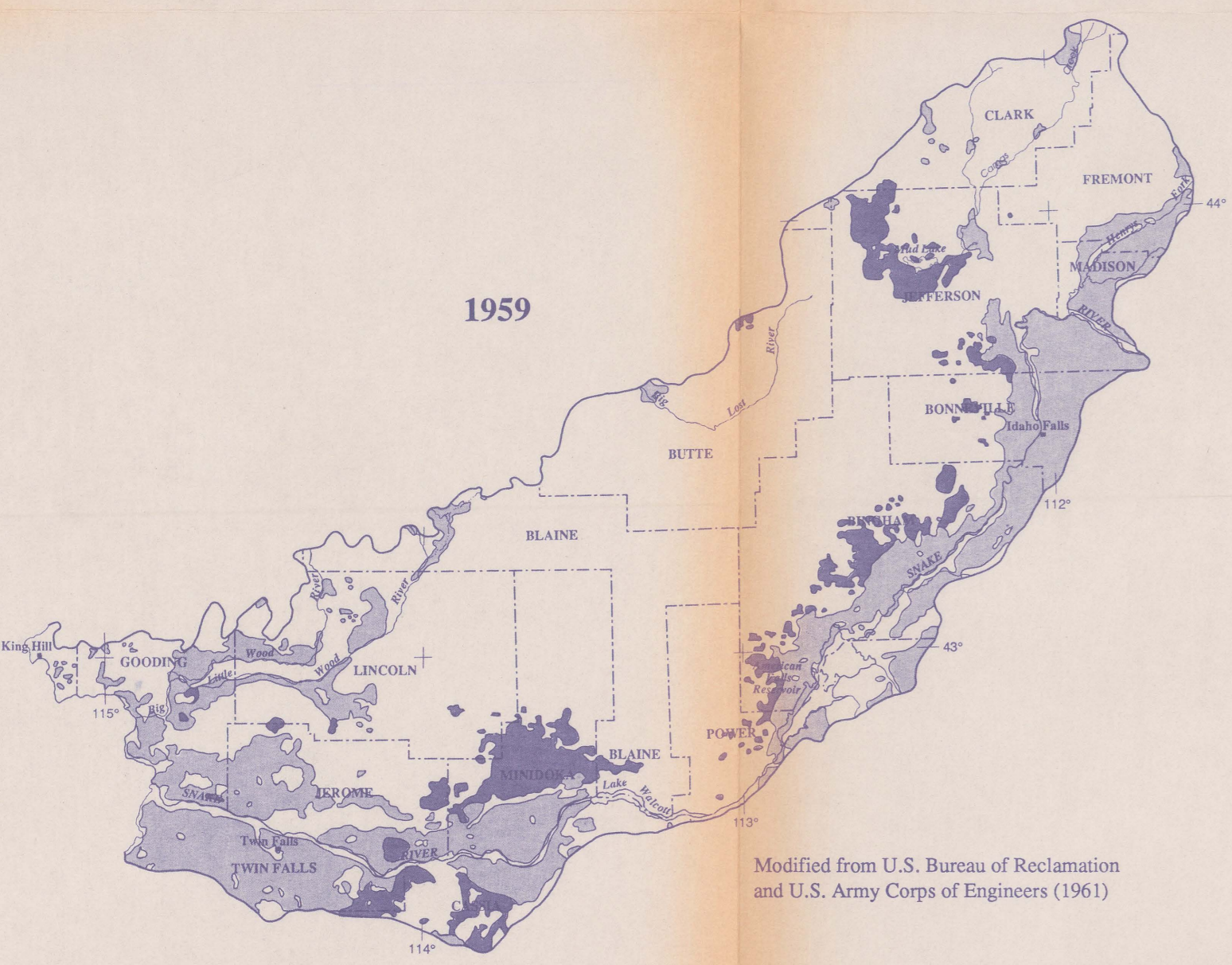
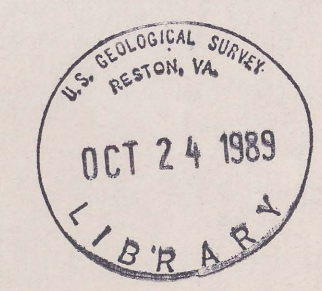
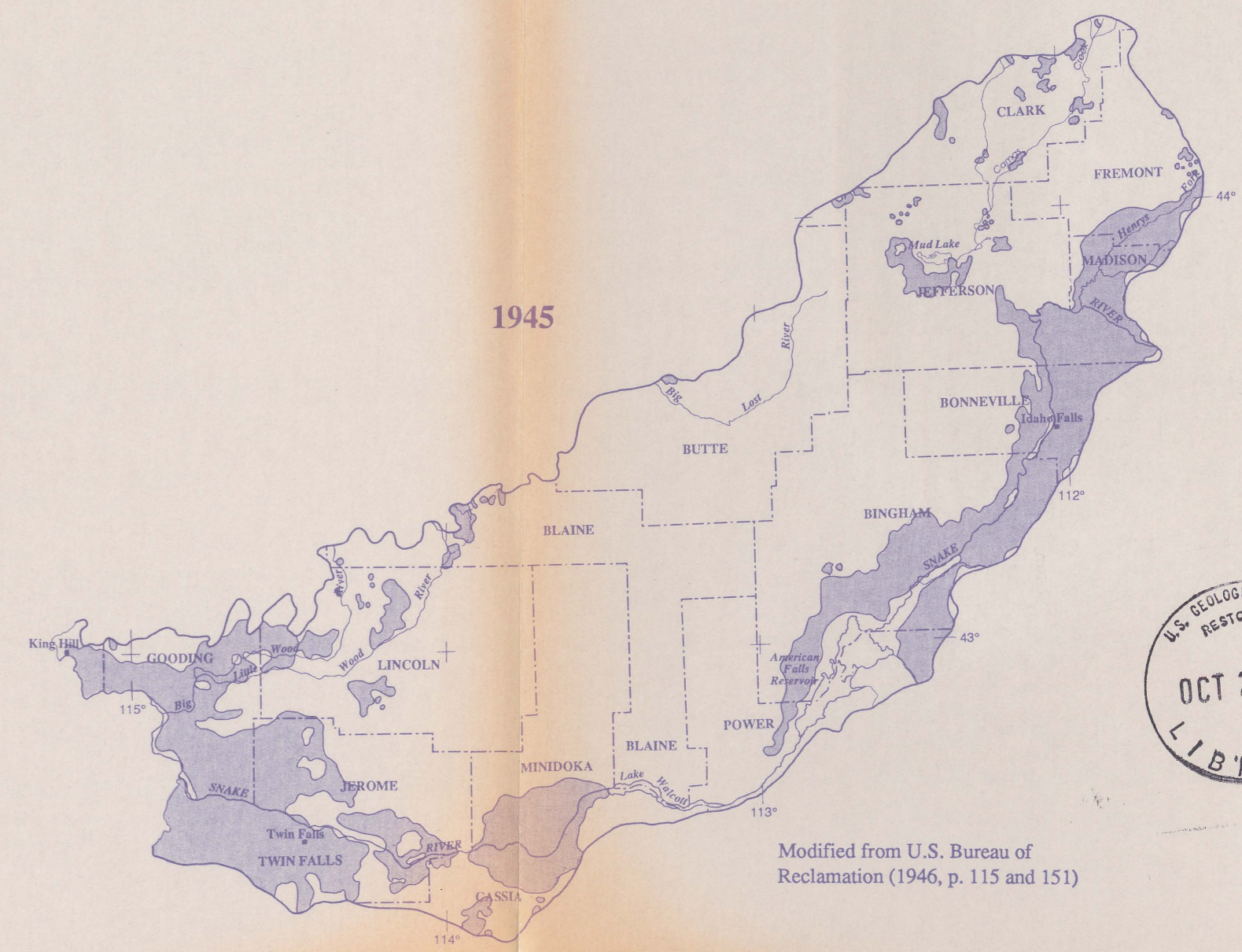
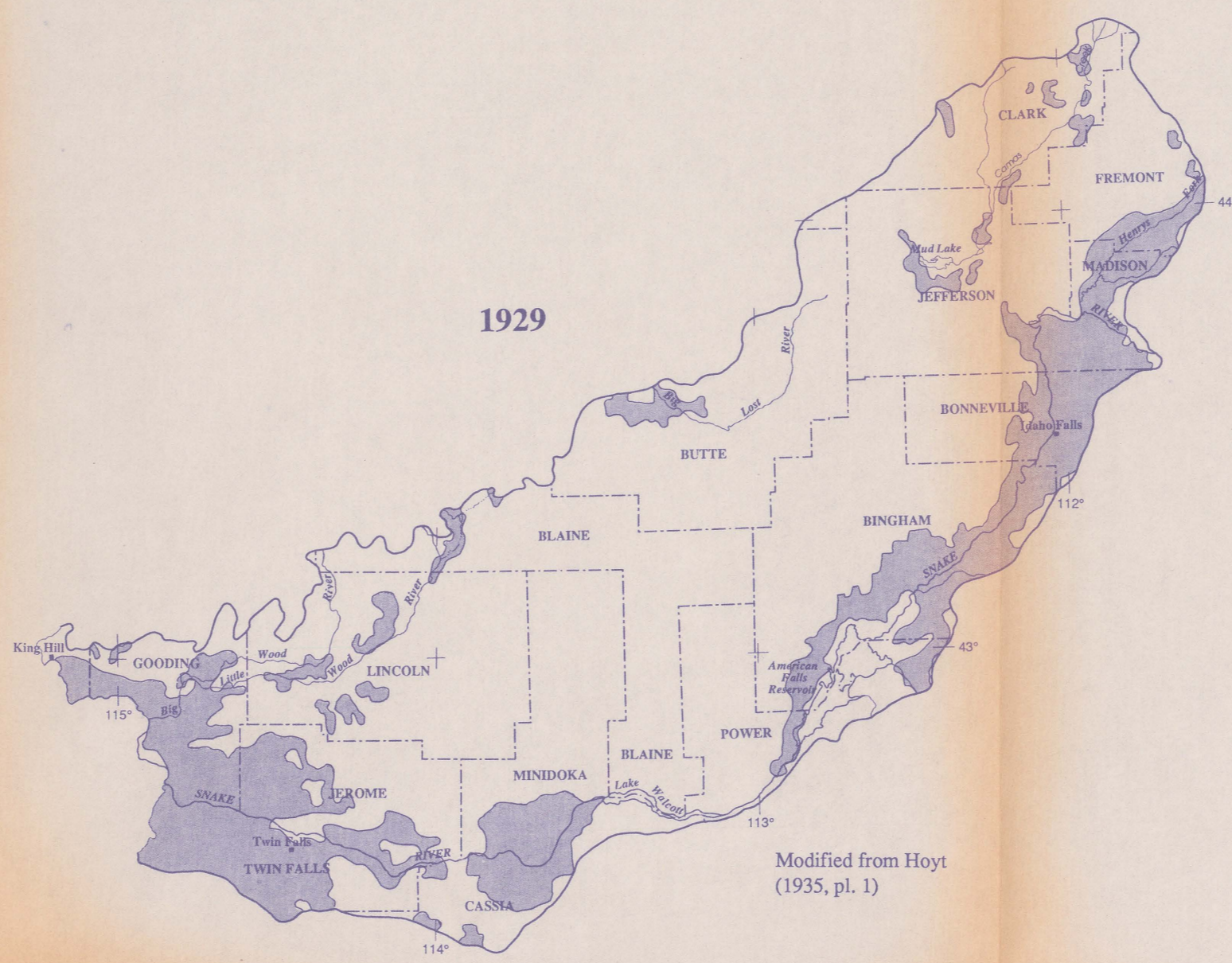
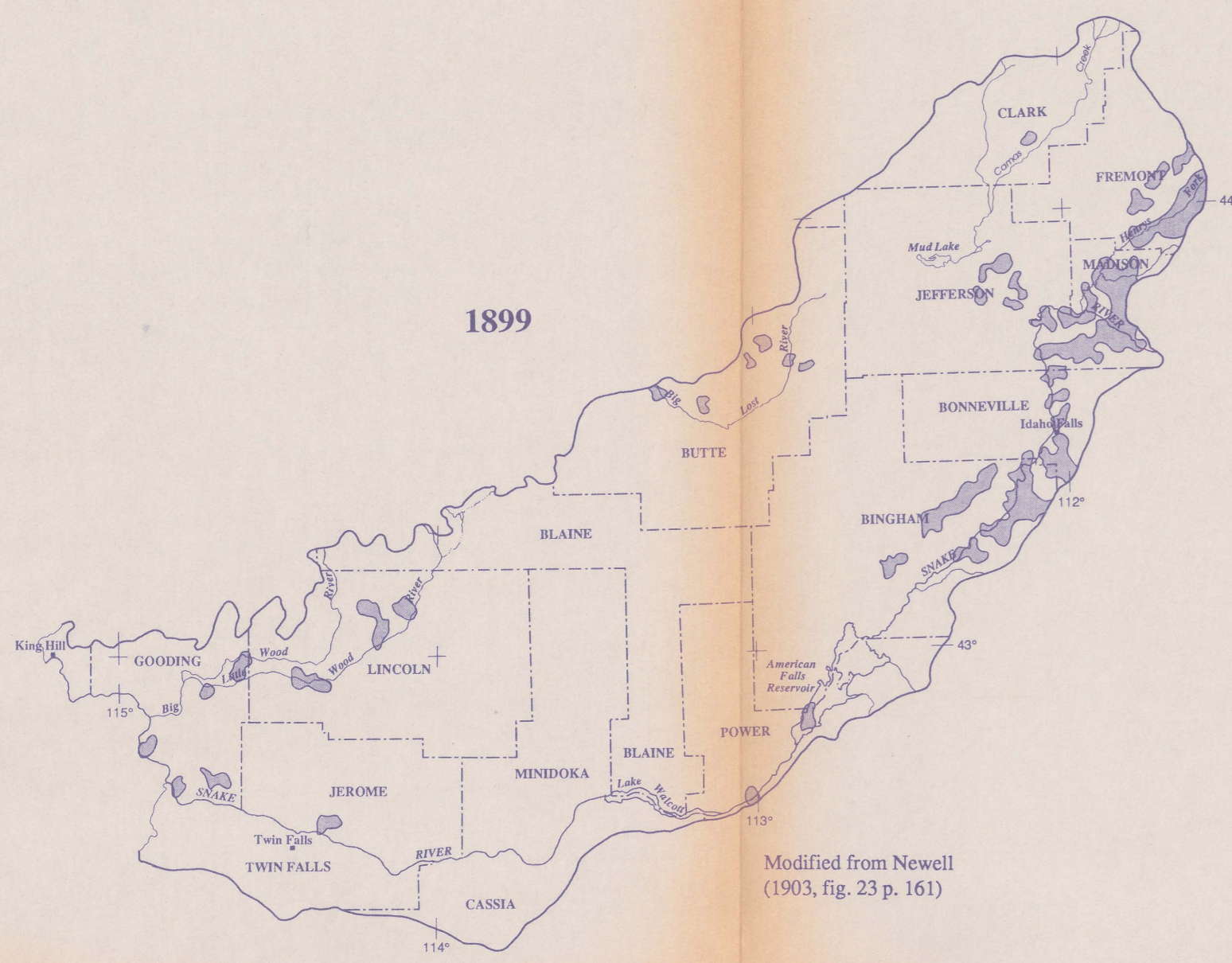


200
R240
No. 87-237

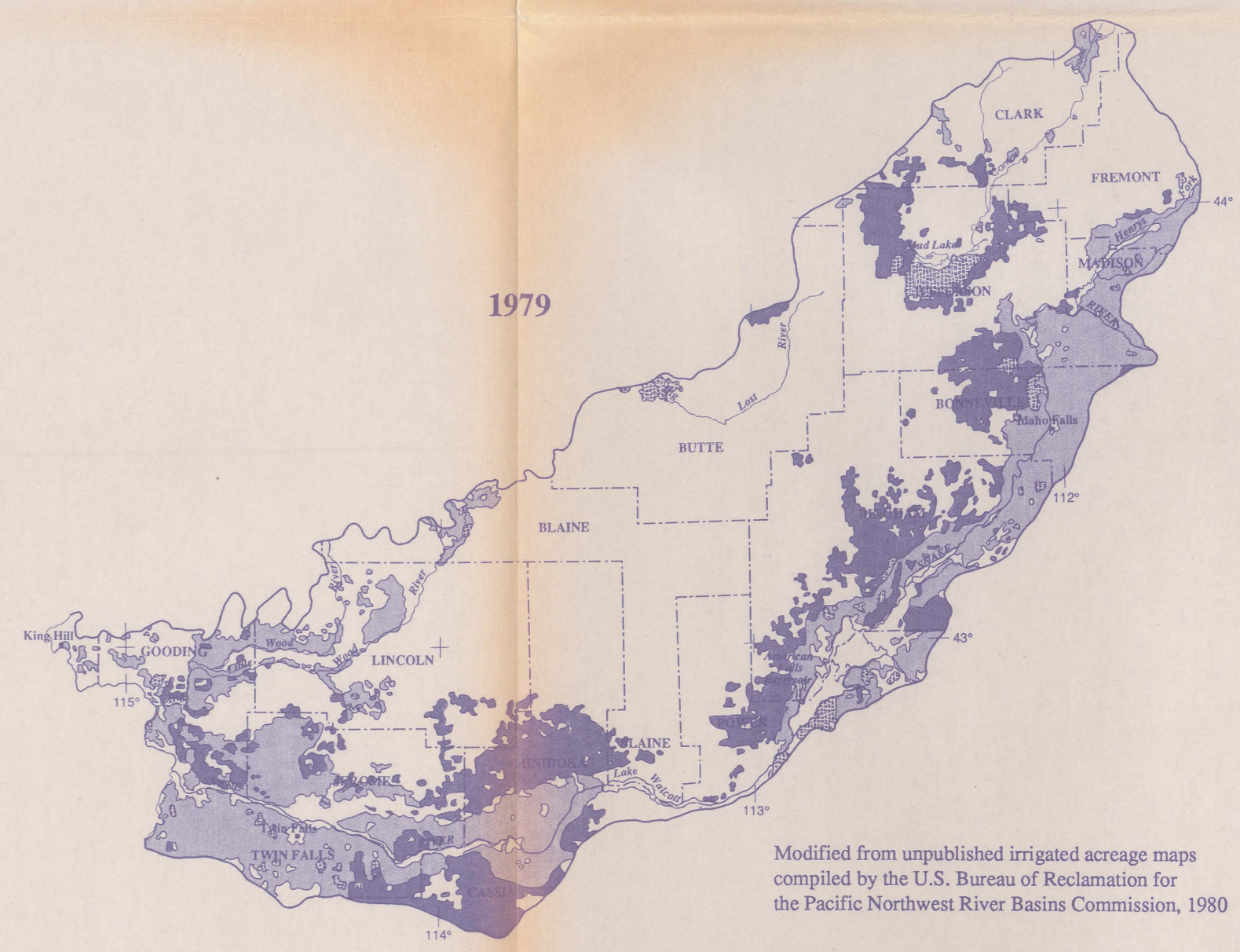
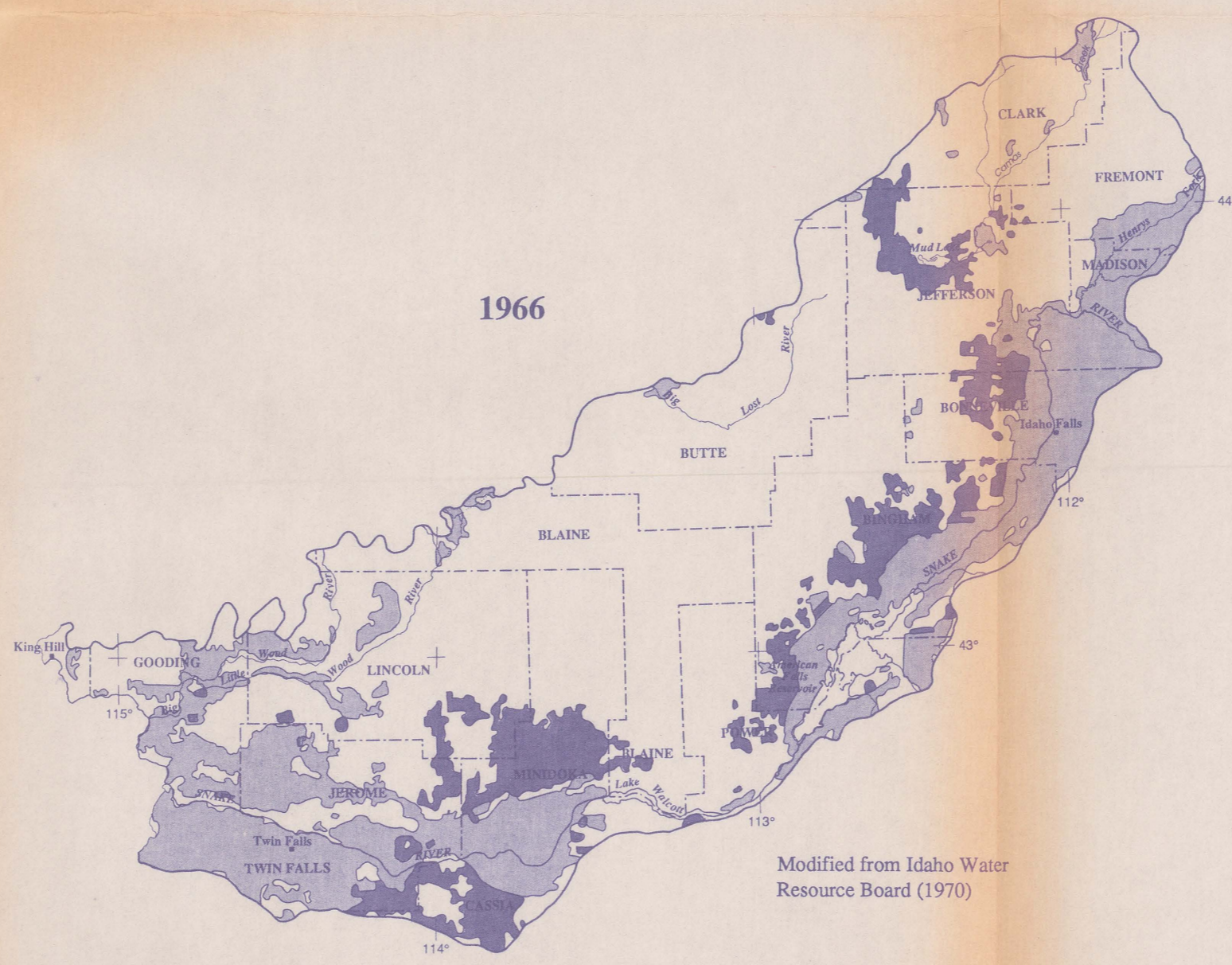


EXPLANATION

- SURFACE-WATER IRRIGATED
- GROUND-WATER IRRIGATED
- SURFACE- AND GROUND-WATER IRRIGATED
- BOUNDARY OF EASTERN SNAKE RIVER PLAIN

Base compiled from U.S. Geological Survey State base maps, 1:1,000,000

10 0 10 20 30 40 MILES
10 0 10 20 30 40 KILOMETERS



MAP SHOWING IRRIGATED AREAS ON THE EASTERN SNAKE RIVER PLAIN, IDAHO, IN 1899, 1929, 1945, 1959, 1966, AND 1979