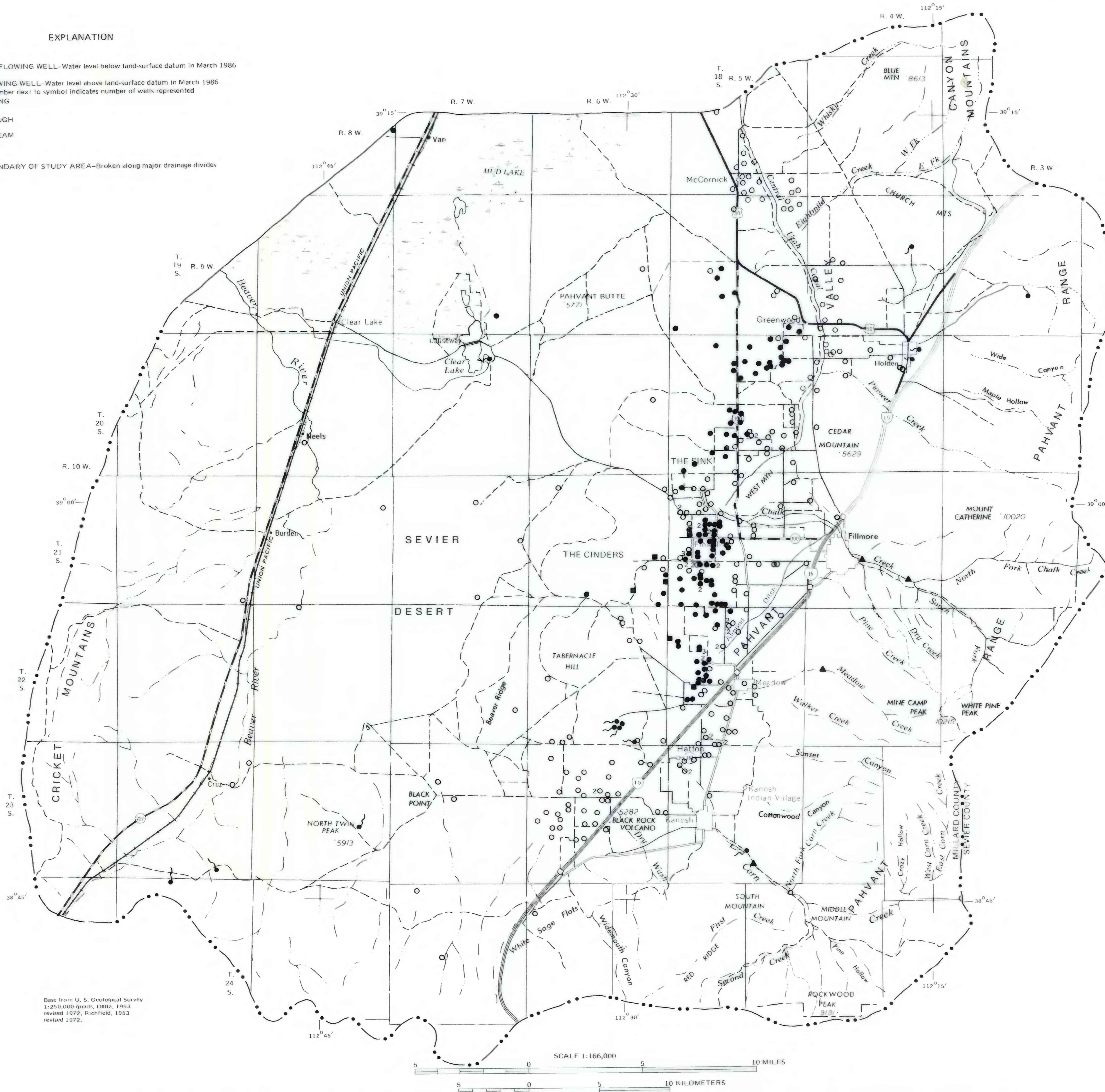


EXPLANATION

- NONFLOWING WELL—Water level below land-surface datum in March 1986
- FLOWING WELL—Water level above land-surface datum in March 1986
- Number next to symbol indicates number of wells represented
- SPRING
- SLOUGH
- ▲ STREAM
- BOUNDARY OF STUDY AREA—Broken along major drainage divides



Base from U. S. Geological Survey
1:250,000 quads, Delta, 1953
revised 1972, Richfield, 1953
revised 1972.

LOCATION OF SELECTED HYDROLOGIC-DATA SITES, PAHVANT VALLEY AND ADJACENT AREAS, MILLARD COUNTY, UTAH, 1987