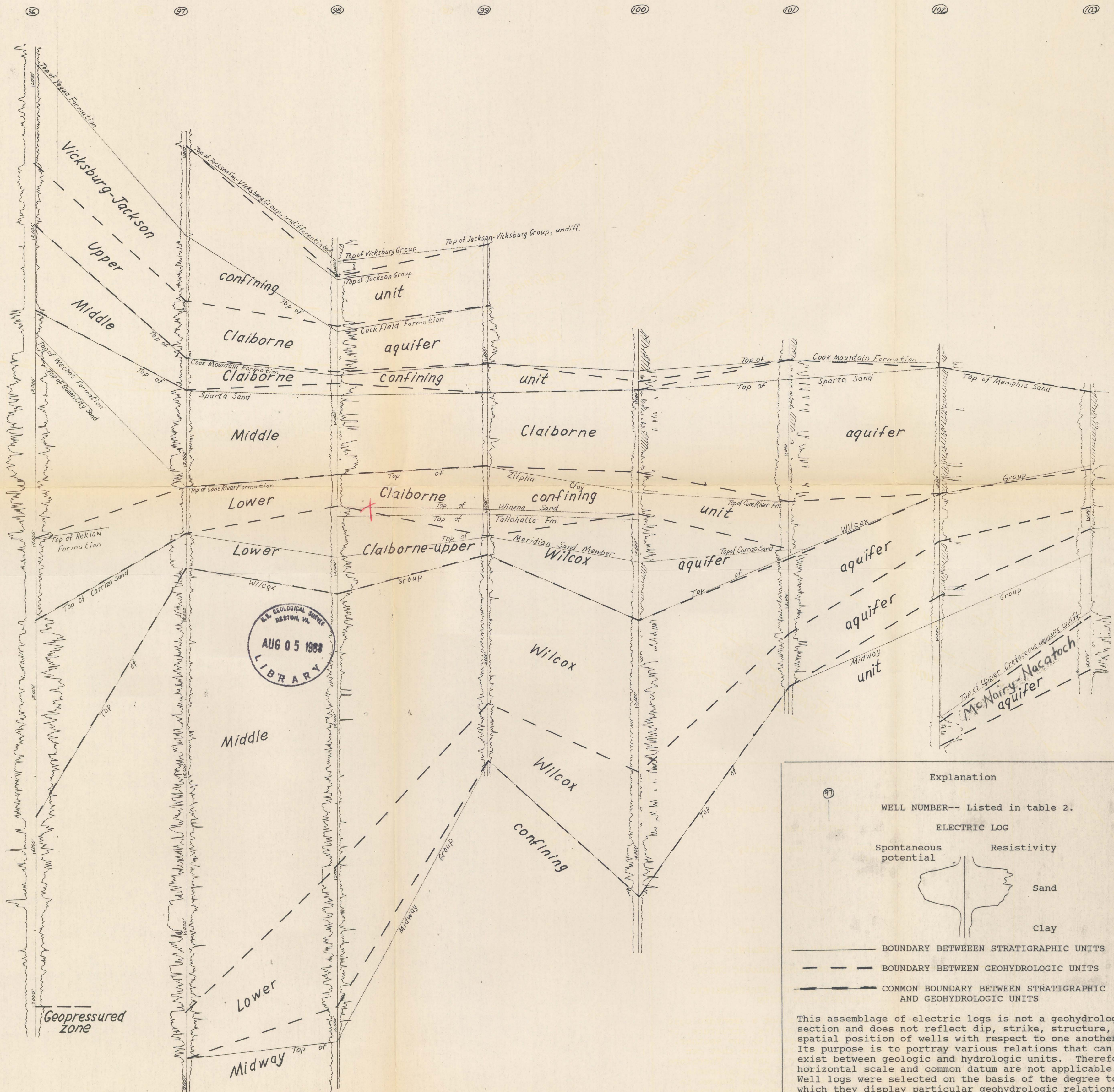


(200)
R290
no. 88-316



Explanation

WELL NUMBER-- Listed in table 2.

ELECTRIC LOG

Spontaneous potential Resistivity

Sand

Clay

BOUNDARY BETWEEN STRATIGRAPHIC UNITS

BOUNDARY BETWEEN GEOHYDROLOGIC UNITS

COMMON BOUNDARY BETWEEN STRATIGRAPHIC AND GEOHYDROLOGIC UNITS

This assemblage of electric logs is not a geohydrologic section and does not reflect dip, strike, structure, or spatial position of wells with respect to one another. Its purpose is to portray various relations that can exist between geologic and hydrologic units. Therefore, horizontal scale and common datum are not applicable. Well logs were selected on the basis of the degree to which they display particular geohydrologic relations without regard to geographic location (fig. 2).

Figure 5.-- Variations among stratigraphic and geohydrologic units, Mississippi embayment and Texas coastal uplands aquifer systems, south-central United States.