

88-380

88-380
DSOI

Tbt

Tt2

Tyf

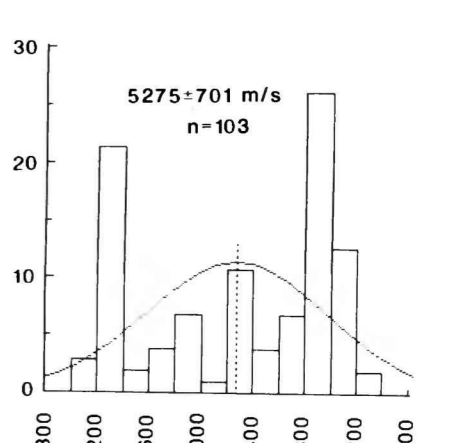
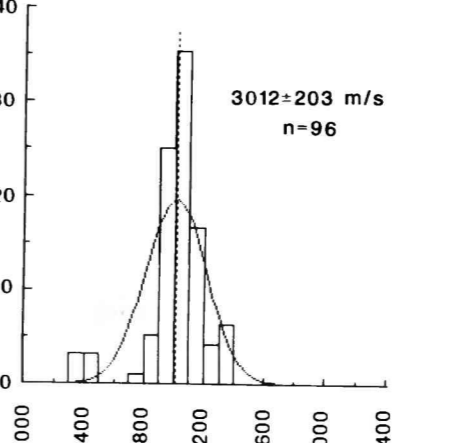
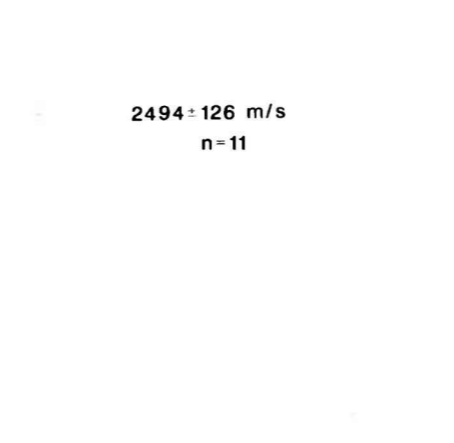
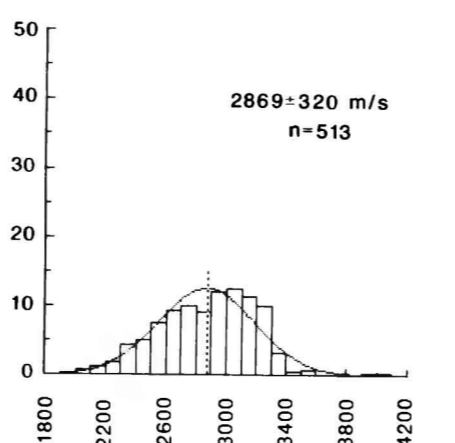
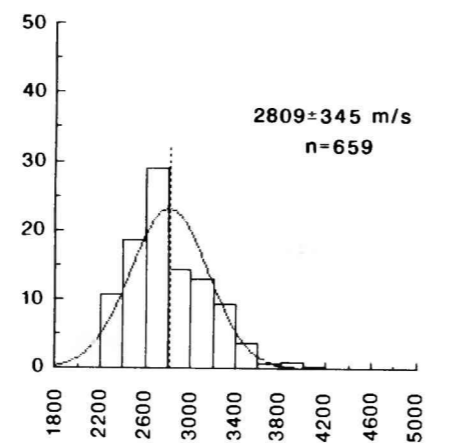
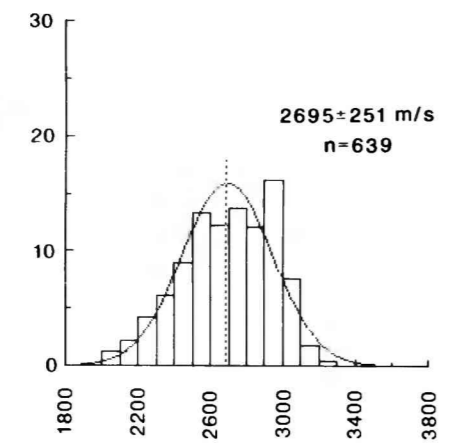
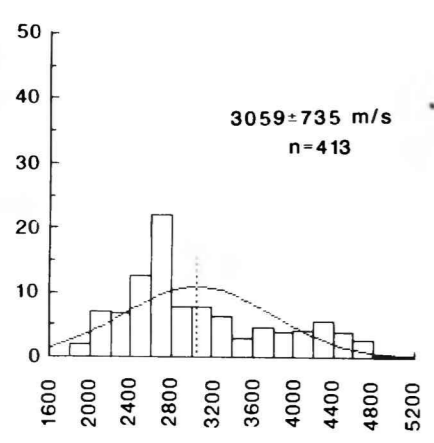
Tt1

Trv

Tc

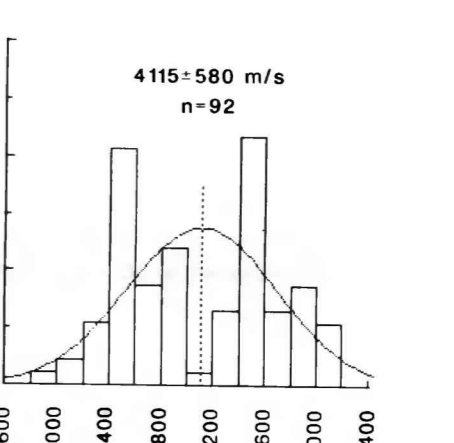
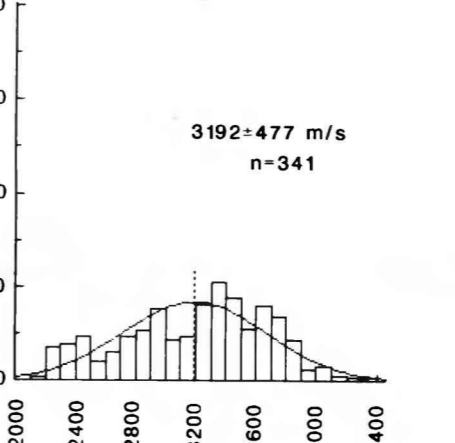
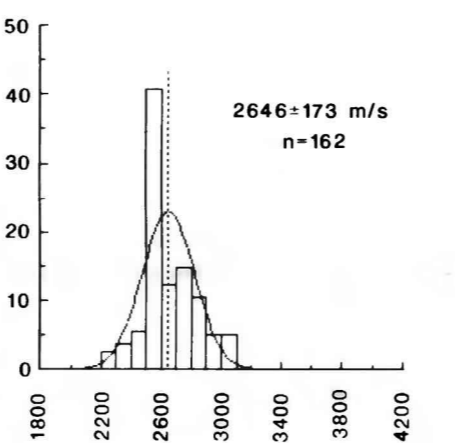
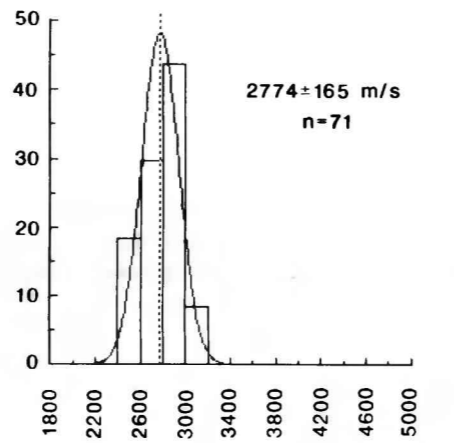
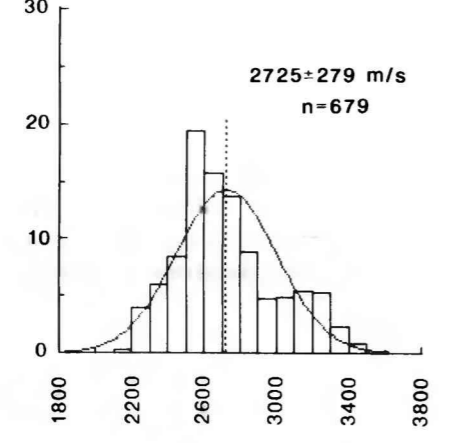
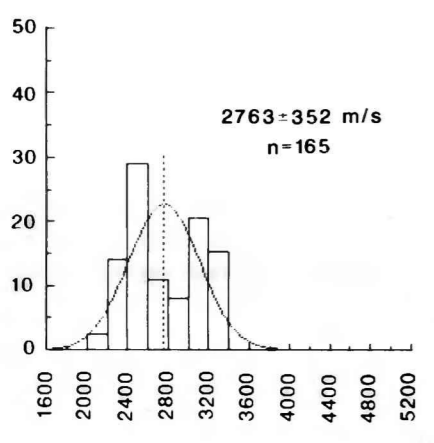
ЄpЄw

DSOI

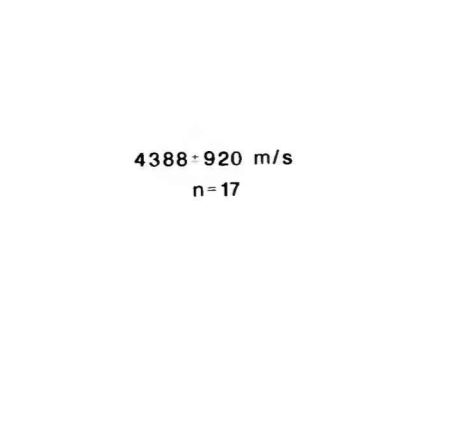
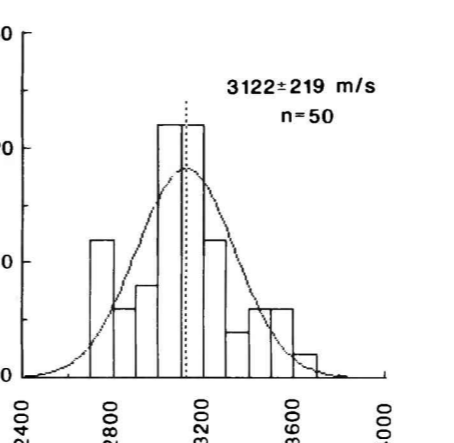
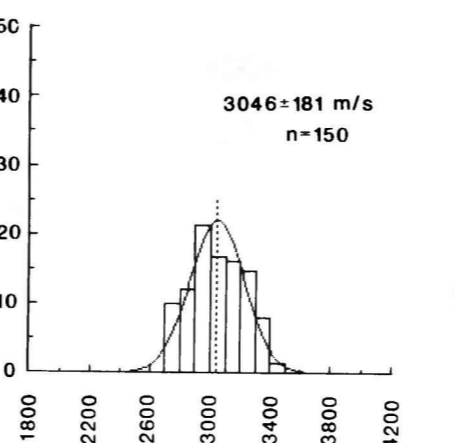
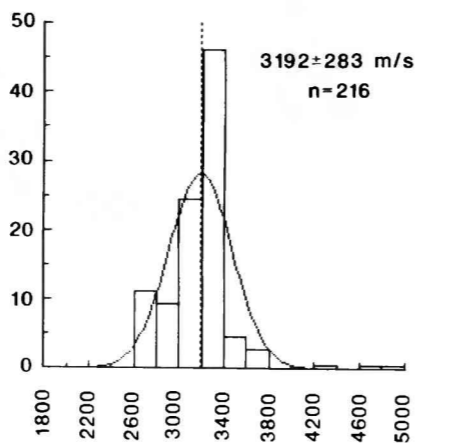
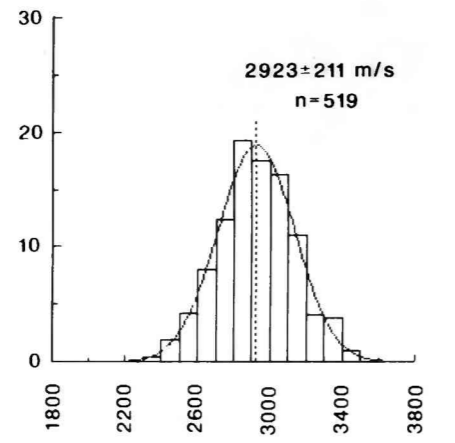
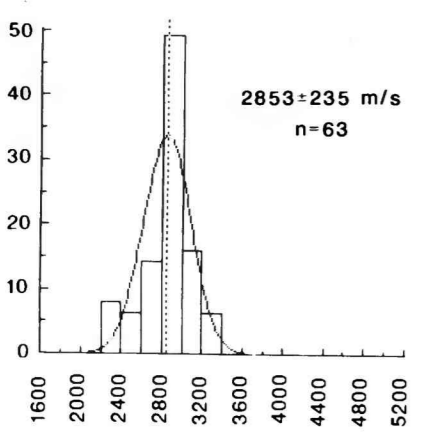


(a)

Percent relative frequency



(b)



(c)

Velocity (m/s)

Figure 38.--CVL velocities for individual stratigraphic units--Tub Spring Member through pre-Tertiary rocks. Data are separated into (a) T-tunnel, (b) northern N-tunnel, and (c) central and southern Rainier Mesa areas.

Where limited number of data points are available, only mean, standard deviation, and number of samples (N) are shown.