

88-380  
Tt4A-D

Tt4K

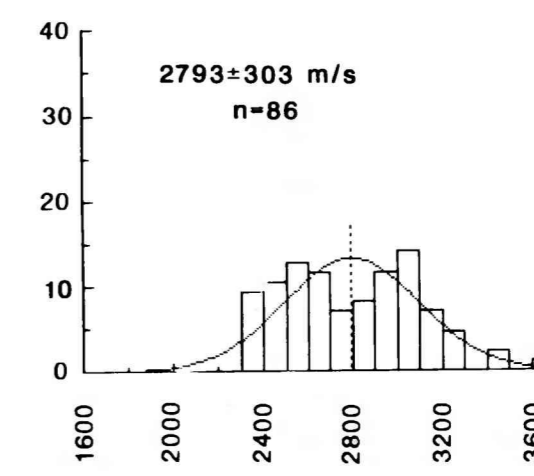
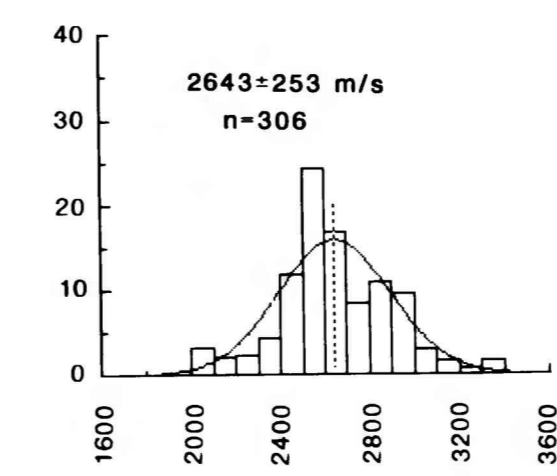
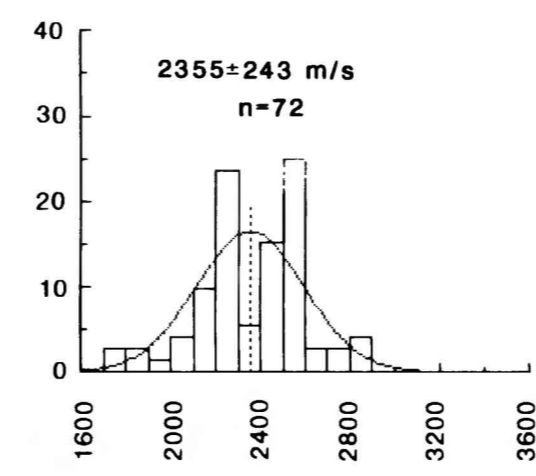
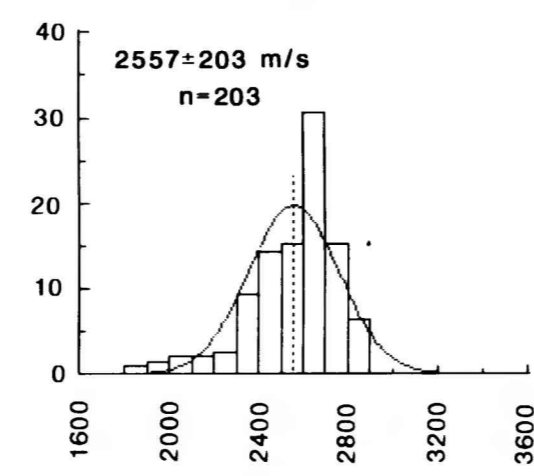
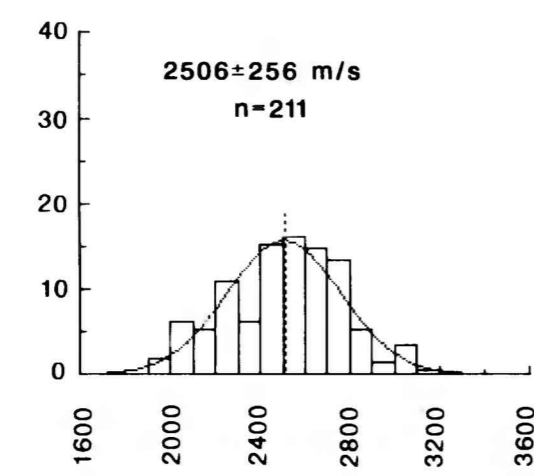
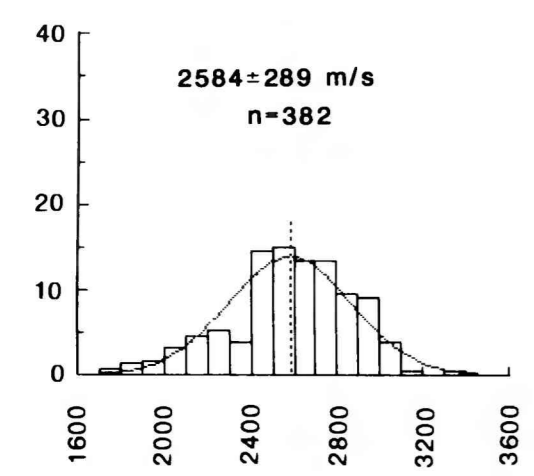
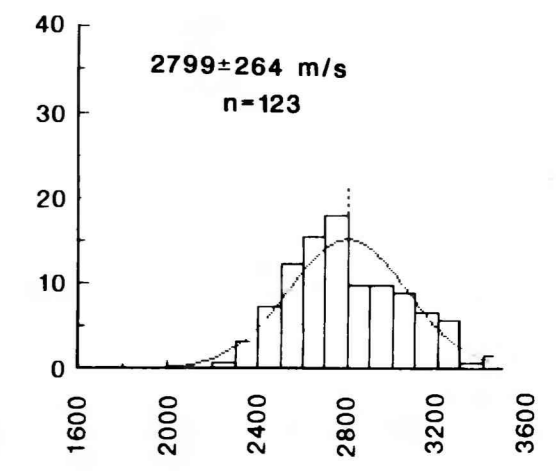
Tt4J

Tt4H

Tt4G

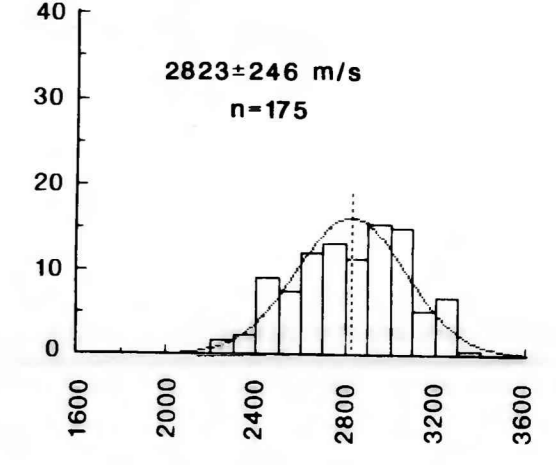
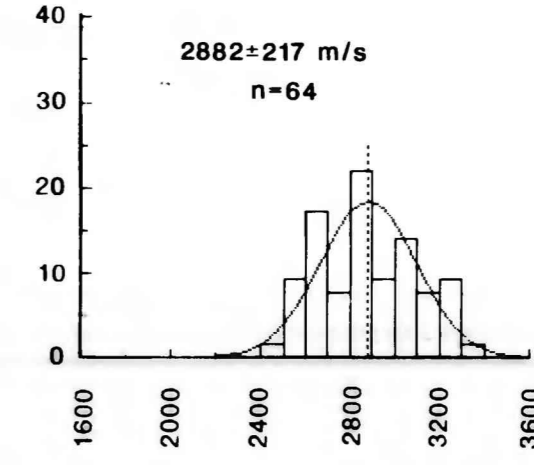
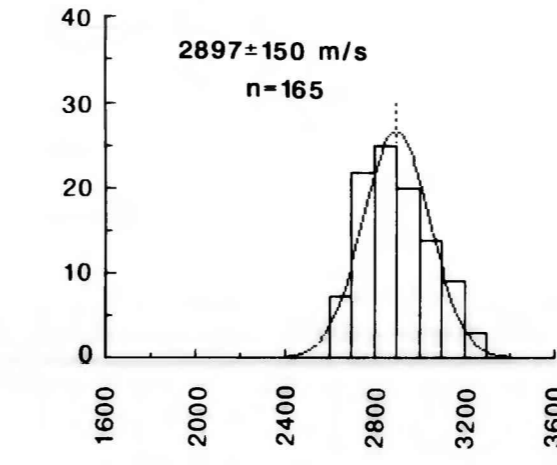
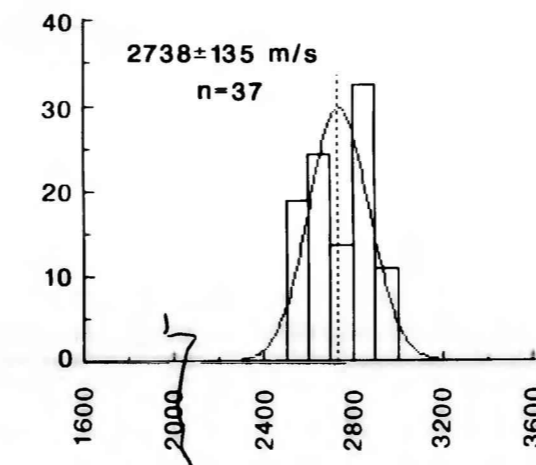
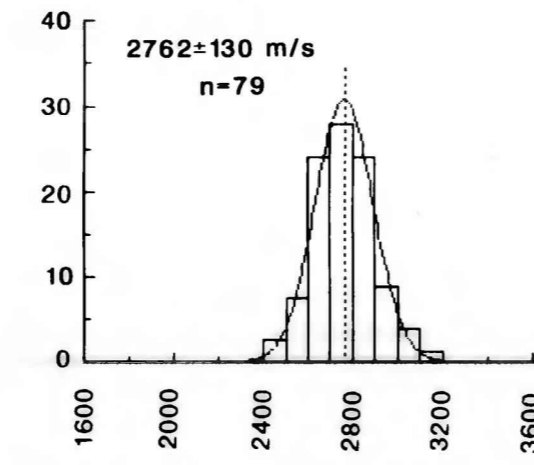
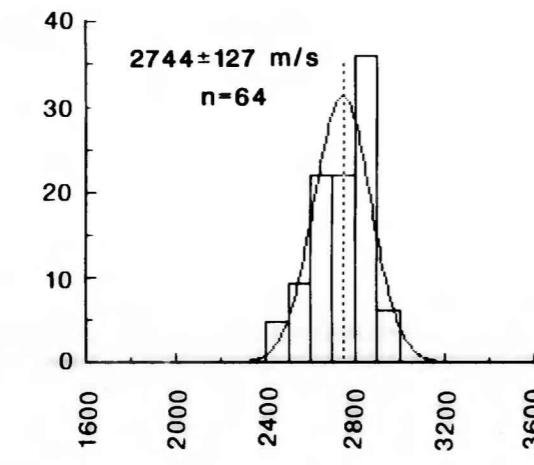
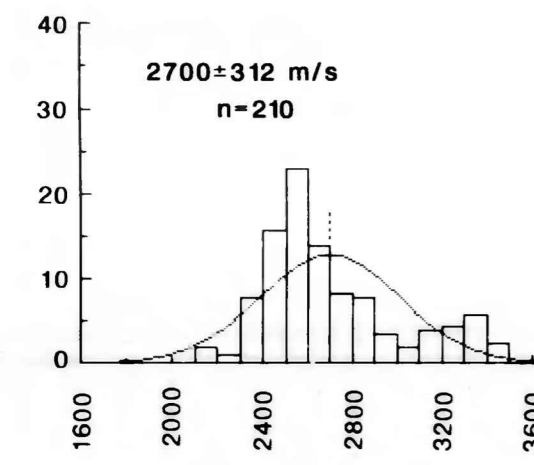
Tt4F

Tt4E

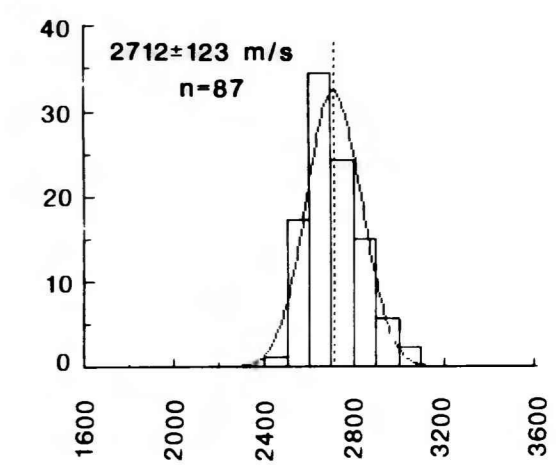
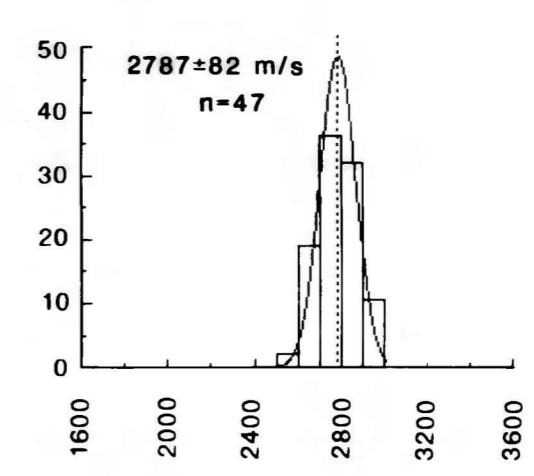
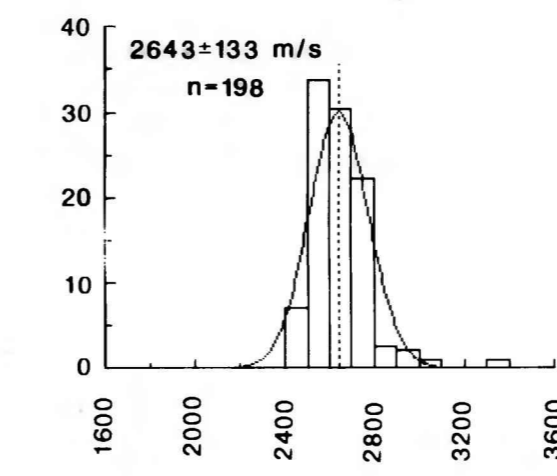
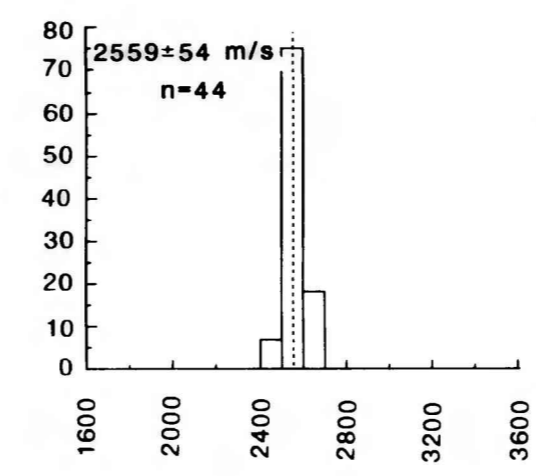
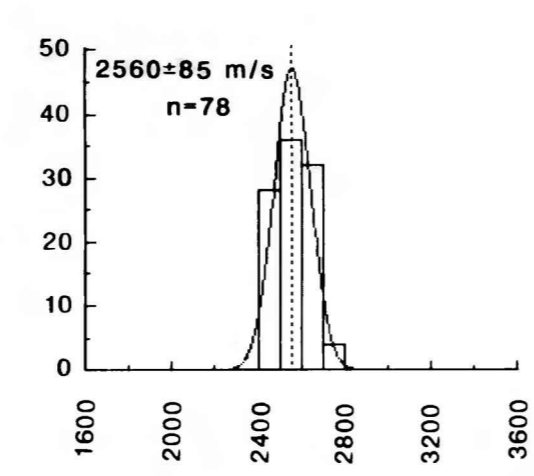
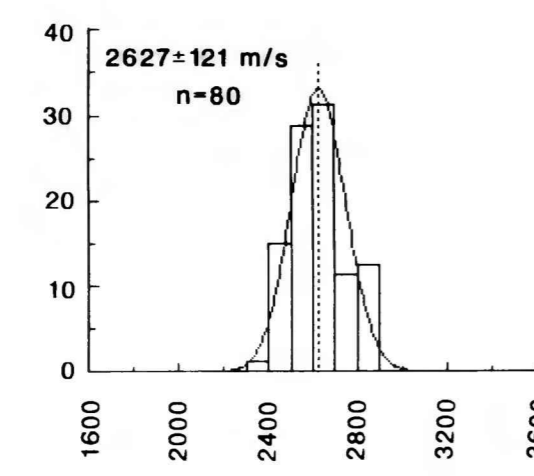
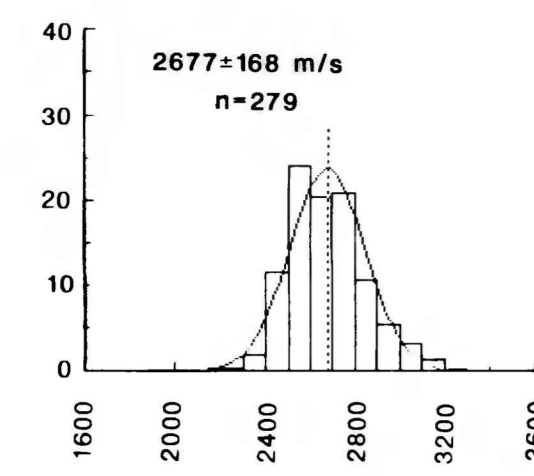


(a)

Percent relative frequency



(b)



(c)

Velocity (m/s)

Figure 32.--Distribution of CVL velocities in subunits in tunnel bed 4 showing mean, standard deviation, and number of samples (N). Data are separated into (a) T-tunnel, (b) N-tunnel, and (c) E-tunnel complexes.