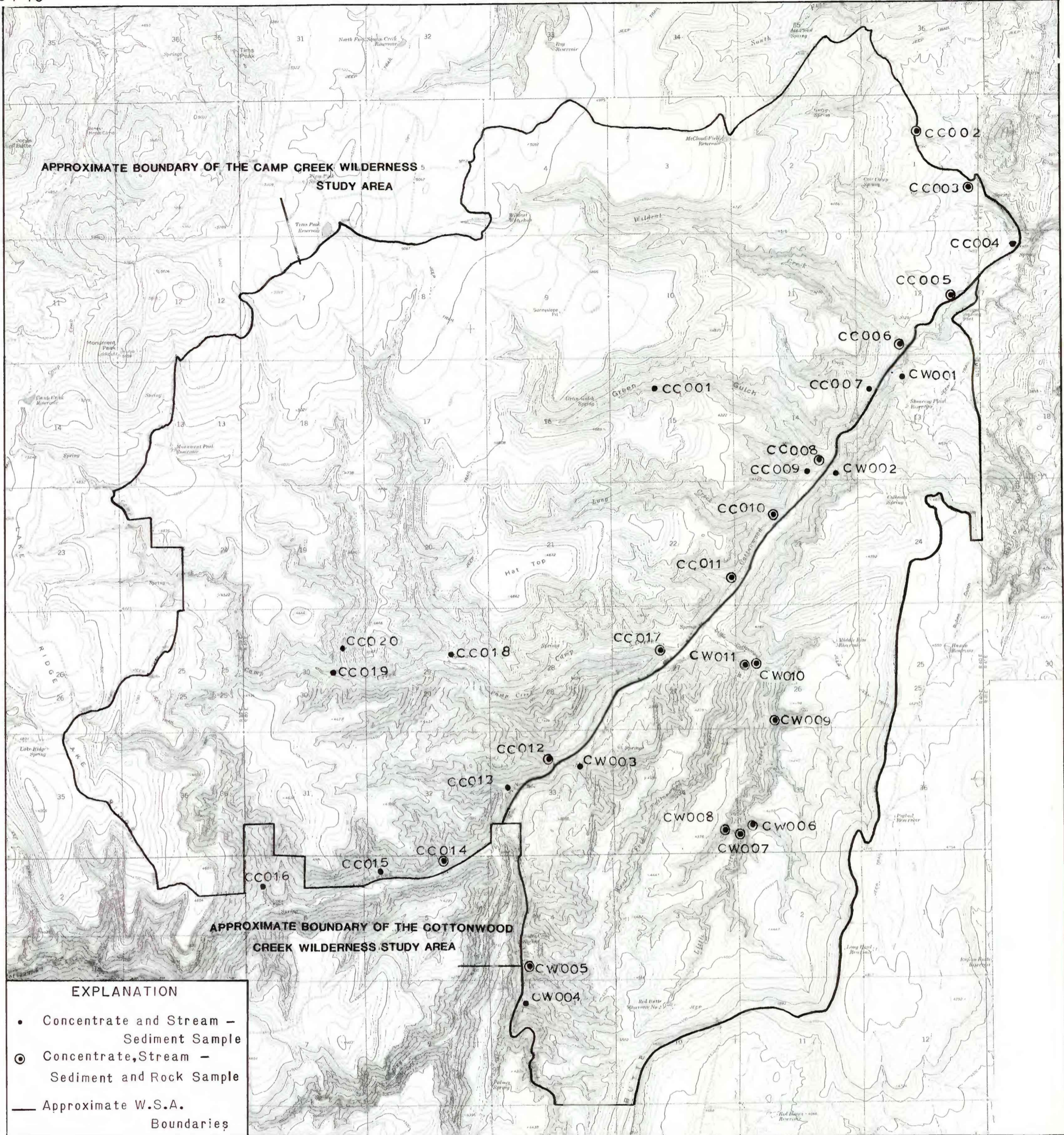


117°54'40"
43°42'20"

117°44'30"
43°42'20"



43°34'20"

117°54'40"

Base from USGS topo sheets, 1:24000.
Alder Creek Avery Creek, Monument Peak,
Shumway Reservoir, and Tims Peak

SCALE 1:48 000

1/2 0 1 2 miles

1 .5 0 1 2 3 KILOMETERS

117°44'30"

43°34'20"

**MAP SHOWING GEOCHEMICAL SAMPLE SITES IN THE CAMP CREEK AND
COTTONWOOD CREEK WILDERNESS STUDY AREAS, MALHEUR COUNTY,
OREGON**

By

Janet L. Jones, M.S. Erickson, David L. Fey, Kay R. Kennedy, and Carol A. Gent

1988

This map is preliminary and has not been edited
or reviewed for conformity with U.S. Geological
Survey editorial standards.