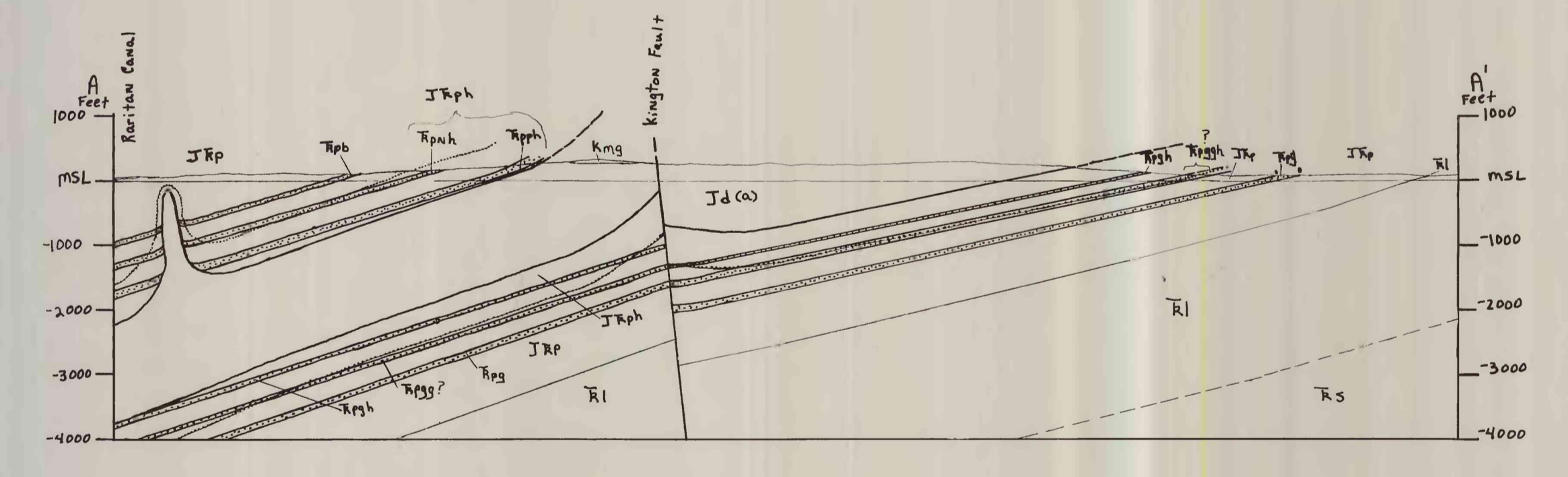
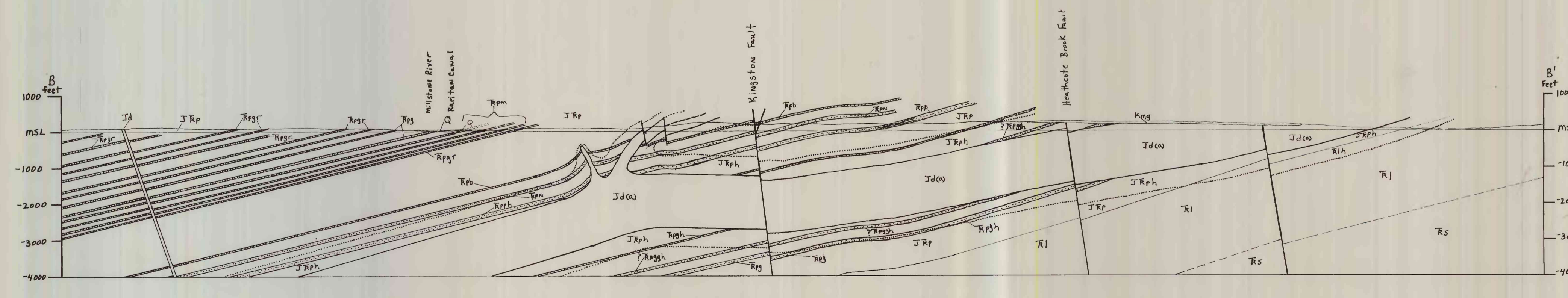


Geology mapped by R.A. Parker (USGS) and H.F. Houghton (NJGS), 1985-88. Some data compiled from H.B. Kummel, 1896. Modified after David P. Harper (NJGS), 1984.

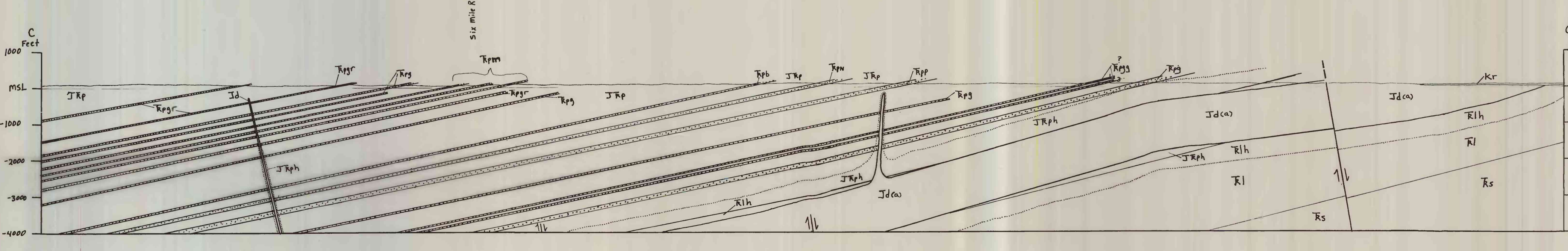
This map is an interim product of the Early Mesozoic Project, part of the New Jersey COGEMAP program.



MONMOUTH JUNCTION QUAD  
CROSS-SECTION A-A'



MONMOUTH JUNCTION QUAD  
CROSS-SECTION B-B'



MONMOUTH JUNCTION QUAD  
CROSS-SECTION C-C'

BEDROCK GEOLOGIC MAP OF THE MONMOUTH JUNCTION QUADRANGLE, NEW JERSEY

By  
Ronald A. Parker and Hugh F. Houghton  
1990

This report (map) is preliminary and has not been reviewed for conformity with U.S. Geological Survey editorial standards or with the North American Stratigraphic Code. Any use of trade, product or firm names is for descriptive purposes only and does not imply endorsement by the U.S. Government.