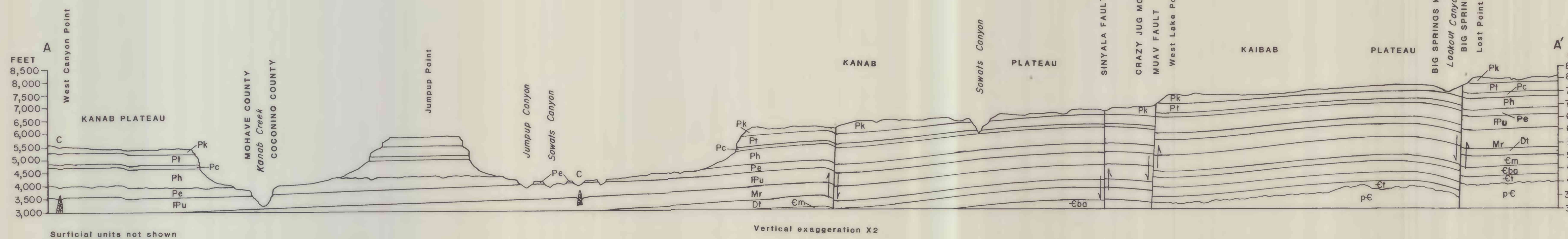
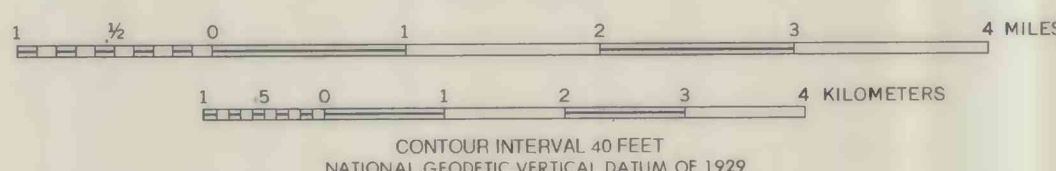
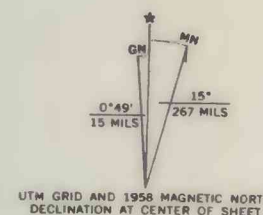




Base from U.S. Geological Survey, 1:62,500
Jumpup Canyon, 1957 and Big Springs, 1958,
Arizona
10,000-foot grid based on Arizona coordinate
system, central and west zones



GEOLOGIC MAP OF THE JUMPUP CANYON AND BIG SPRINGS QUADRANGLE, MOHAVE AND COCONINO COUNTIES, ARIZONA

By
G.H. Billingsley
1990

This map is preliminary and has not been reviewed for conformity with U.S. Geological Survey editorial standards or with the North American Stratigraphic Code. Any use of trade, firm, or product names is for descriptive purposes only and does not imply endorsement by the U.S. Government.