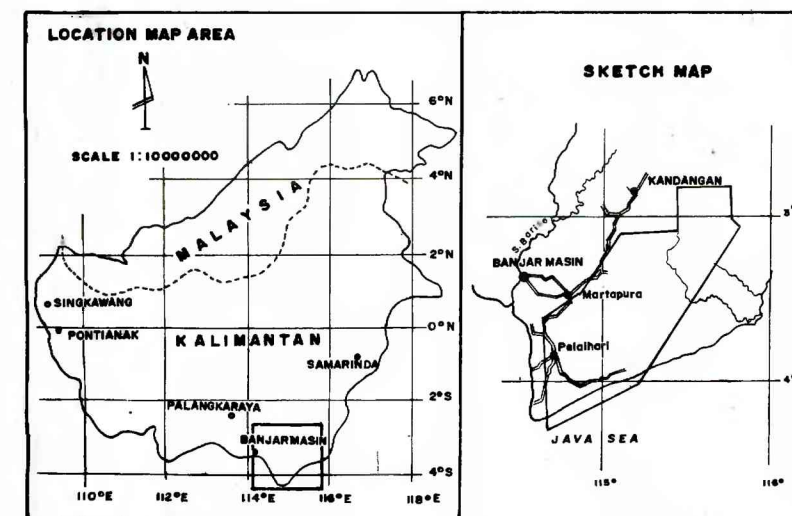
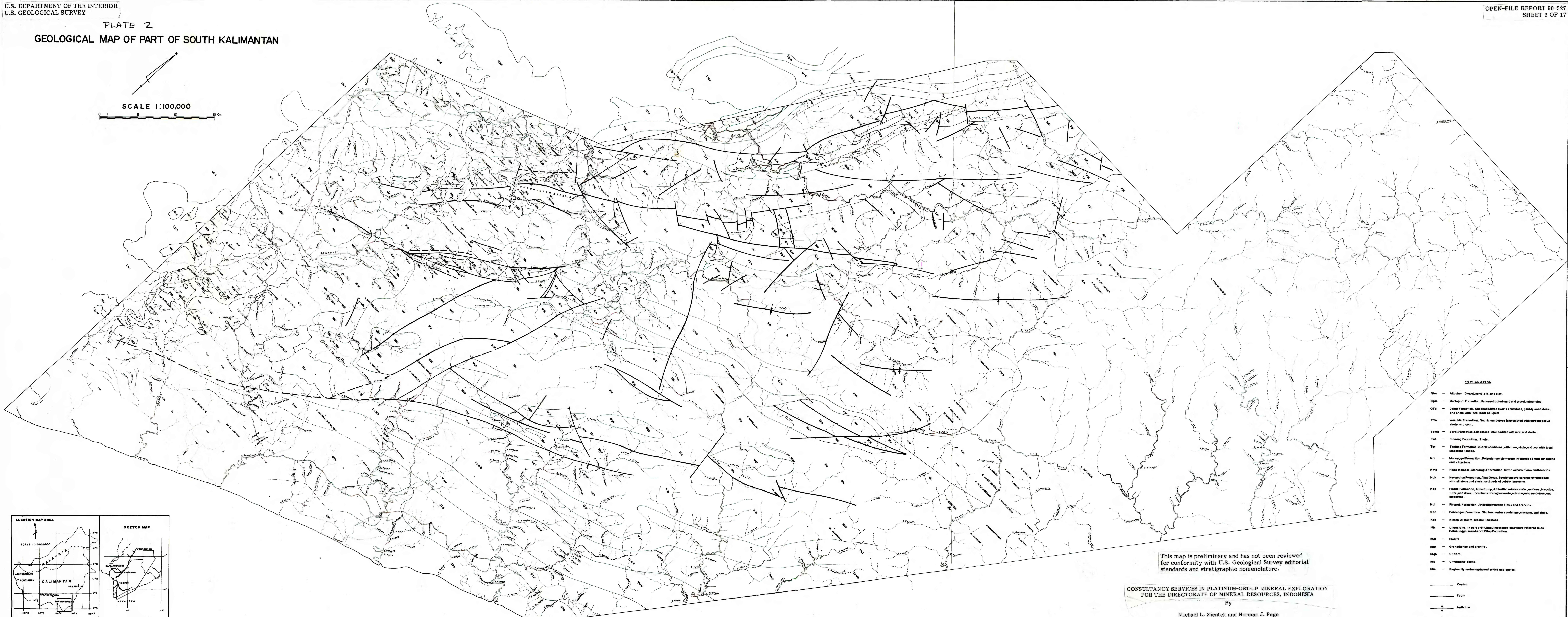
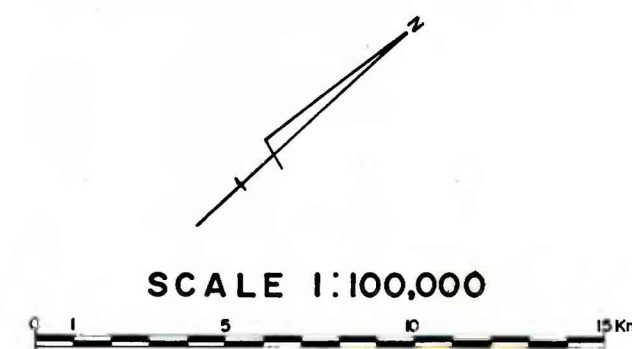


PLATE 2
GEOLOGICAL MAP OF PART OF SOUTH KALIMANTAN



EXPLANATION

Qho	— Alluvium. Gravel, sand, silt, and clay.
Qpm	— Martapura Formation. Unconsolidated sand and gravel, minor clay.
Qtd	— Datar Formation. Unconsolidated quartz sandstone, pebbly sandstone, and shale with local beds of lignite.
Tmw	— Worukin Formation. Quartz sandstone intercalated with carbonaceous shale and coal.
Tomb	— Beraf Formation. Limestone interbedded with marl and shale.
Tob	— Binuang Formation. Shale.
Tet	— Tanjung Formation. Quartz sandstone, siltstone, shale, and coal with local limestone lenses.
Km	— Manunggul Formation. Polymict conglomerate interbedded with sandstone and siltstone.
Kps	— Pisu member, Manunggul Formation. Mafic volcanic flows and breccias.
Kok	— Karantapan Formation, Alimo Group. Sandstone (volcanic) interbedded with siltstone and shale, local beds of pebbly limestone.
Kop	— Puduk Formation, Alimo Group. Andesitic volcanic rocks, as flows, breccias, tuffs, and dikes. Local beds of conglomerate, volcanoclastic sandstone, and limestone.
Kpl	— Pitandak Formation. Andesitic volcanic flows and breccias.
Kpn	— Panlungan Formation. Shallow marine sandstone, siltstone, and shale.
Kak	— Kintap Oligolith. Clastic limestone.
Mis	— Limestone. In part orbiculate limestone elsewhere referred to as Bestunggal member of Pisu Formation.
Mel	— Diorite.
Mgr	— Granodiorite and granite.
Mgb	— Gabbro.
Mu	— Ultramafic rocks.
Mm	— Regionally metamorphosed schist and gneiss.



This map is preliminary and has not been reviewed for conformity with U.S. Geological Survey editorial standards and stratigraphic nomenclature.

CONSULTANCY SERVICES IN PLATINUM-GROUP MINERAL EXPLORATION
FOR THE DIRECTORATE OF MINERAL RESOURCES, INDONESIA

By
Michael L. Zientek and Norman J. Page