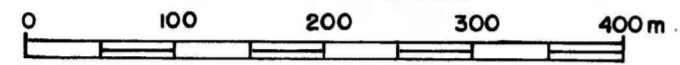


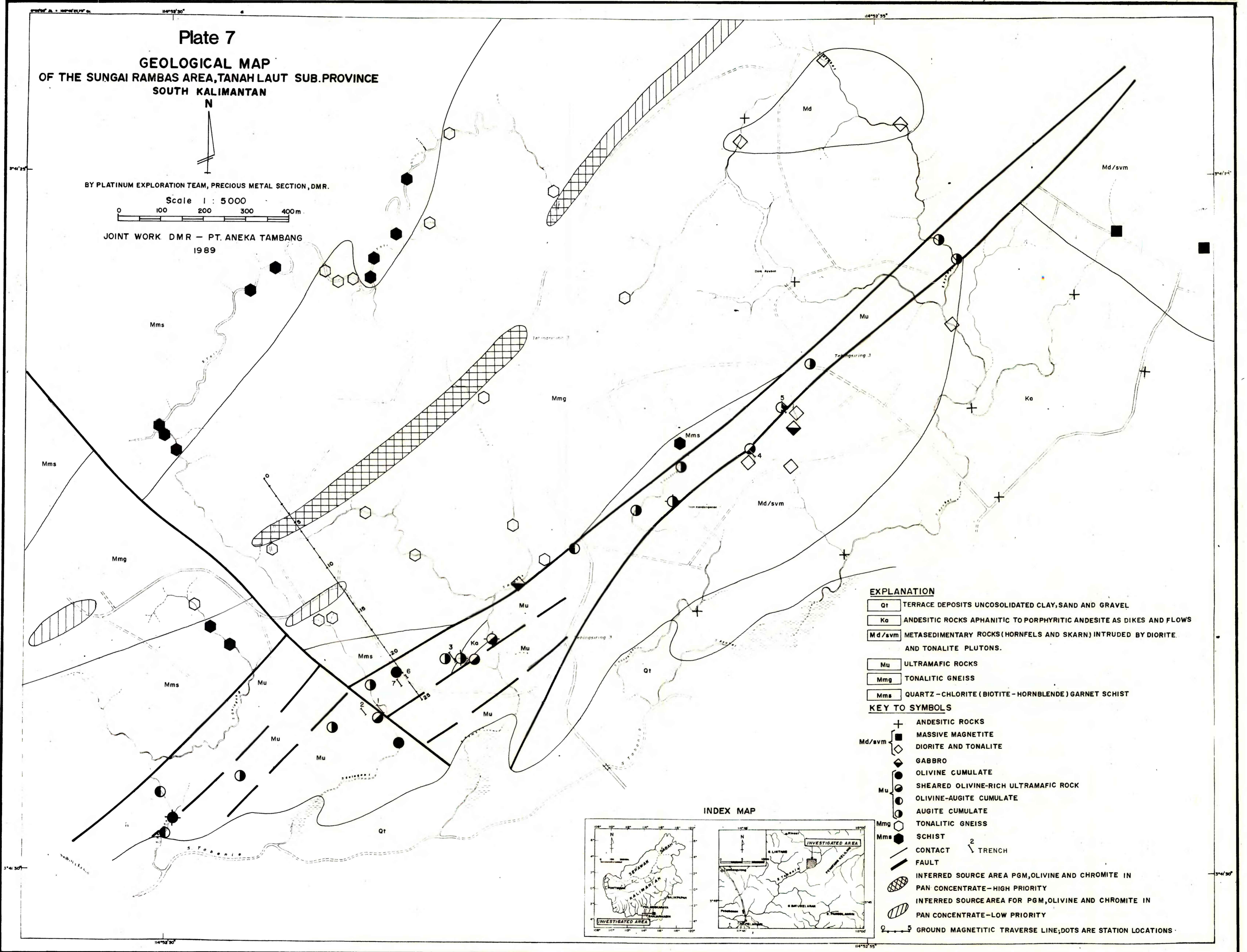
Plate 7
GEOLOGICAL MAP
OF THE SUNGAI RAMBAS AREA, TANAH LAUT SUB-PROVINCE
SOUTH KALIMANTAN

BY PLATINUM EXPLORATION TEAM, PRECIOUS METAL SECTION, DMR.

Scale 1 : 5 000



JOINT WORK DMR - PT. ANEKA TAMBANG
1989



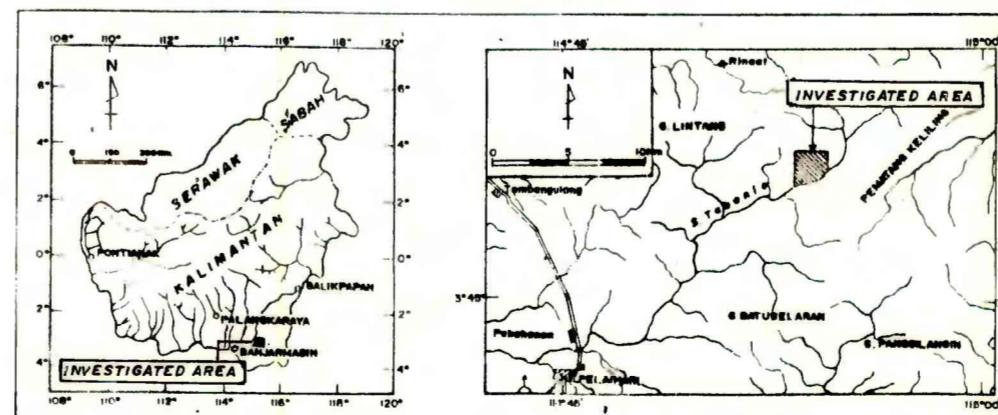
EXPLANATION

- Qt TERRACE DEPOSITS UNCONSOLIDATED CLAY, SAND AND GRAVEL
- Ka ANDESITIC ROCKS APHANITIC TO PORPHYRITIC ANDESITE AS DIKES AND FLOWS
- Md/svm METASEDIMENTARY ROCKS (HORNFELS AND SKARN) INTRUDED BY DIORITE AND TONALITE PLUTONS.
- Mu ULTRAMAFIC ROCKS
- Mmg TONALITIC GNEISS
- Mms QUARTZ-CHLORITE (BIOTITE-HORNBLLENDE) GARNET SCHIST

KEY TO SYMBOLS

- + ANDESITIC ROCKS
- Md/svm ■ MASSIVE MAGNETITE
- DIORITE AND TONALITE
- GABBRO
- OLIVINE CUMULATE
- SHEARED OLIVINE-RICH ULTRAMAFIC ROCK
- OLIVINE-AUGITE CUMULATE
- AUGITE CUMULATE
- TONALITIC GNEISS
- Mmg ● SCHIST
- Mms ● CONTACT
- TRENCH
- FAULT
- ▨ INFERRED SOURCE AREA PGM, OLIVINE AND CHROMITE IN PAN CONCENTRATE-HIGH PRIORITY
- ▩ INFERRED SOURCE AREA FOR PGM, OLIVINE AND CHROMITE IN PAN CONCENTRATE-LOW PRIORITY
- GROUND MAGNETIC TRVERSE LINE; DOTS ARE STATION LOCATIONS

INDEX MAP



CONSULTANCY SERVICES IN PLATINUM-GROUP MINERAL EXPLORATION
FOR THE DIRECTORATE OF MINERAL RESOURCES, INDONESIA

By
Michael L. Zientek and Norman J. Page

1991

This map is preliminary and has not been reviewed for conformity with U.S. Geological Survey editorial standards and stratigraphic nomenclature.