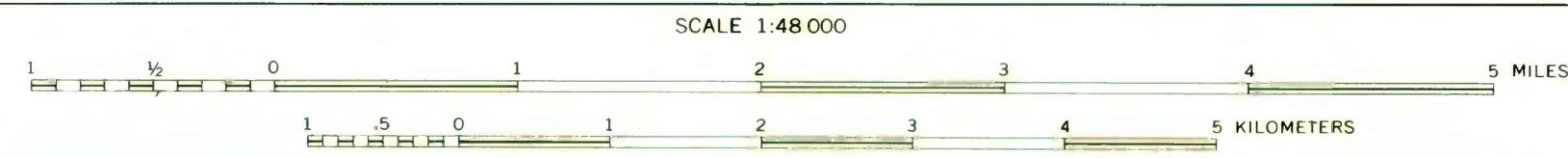
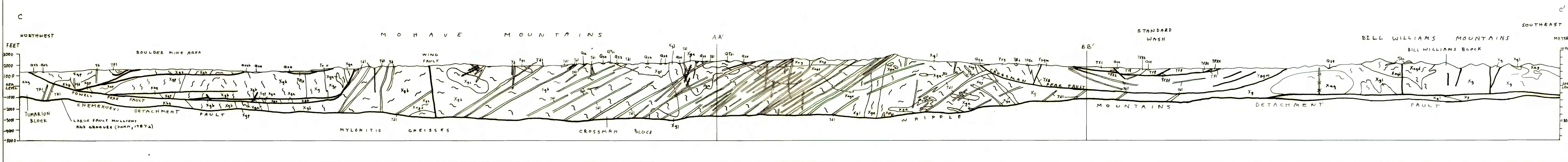


Thin Quaternary units omitted or exaggerated on cross sections.



**PRELIMINARY GEOLOGIC MAP OF THE MOHAVE MOUNTAINS AREA, MOHAVE COUNTY, WESTERN ARIZONA**

By  
K. A. HOWARD, J. E. NIELSEN, H. G. WILSHIRE, J. K. NAKATA, J. W. GOODGE, S. L. RENEAU, B. E. JOHN, and V. L. HANSEN  
1990

This report is preliminary and has not been edited or reviewed for conformity with U.S. Geological Survey editorial standards or with the North American Stratigraphic Code. Any use of trade, firm, or product names is for descriptive purposes only and does not imply endorsement by the U.S. Government.