
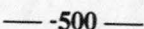



EXPLANATION

-  AREA OF OUTCROP OR SUBCROP--
Dashed where inferred
-  -500- STRUCTURE CONTOUR --
Shows altitude of top of unit.
Dashed where inferred. Contour
interval, in feet, is variable.
Datum is sea level
-  BOUNDARY OF STUDY AREA

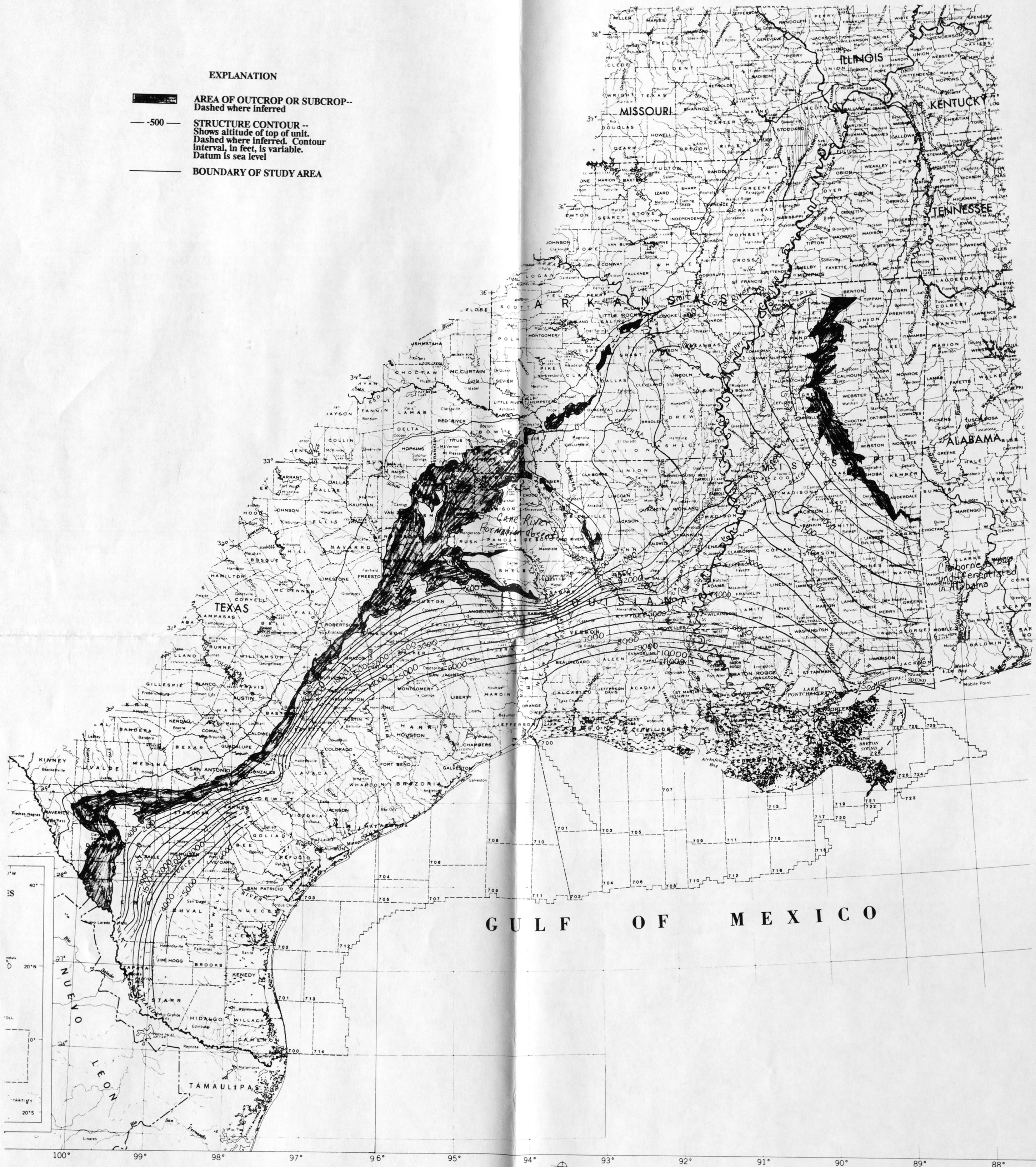


Figure 22. -- Altitude and configuration of the top of the Cane River Formation and its equivalents.



200
R290
no 16-10