
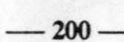
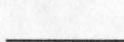


EXPLANATION

-  AREA OF OUTCROP OR SUBCROP--  
Dashed where inferred
-  200 — LINE OF EQUAL THICKNESS OF UNIT--  
Dashed where inferred. Hachures indicate  
areas of lesser thickness. Interval, in  
feet, is variable
-  BOUNDARY OF STUDY AREA

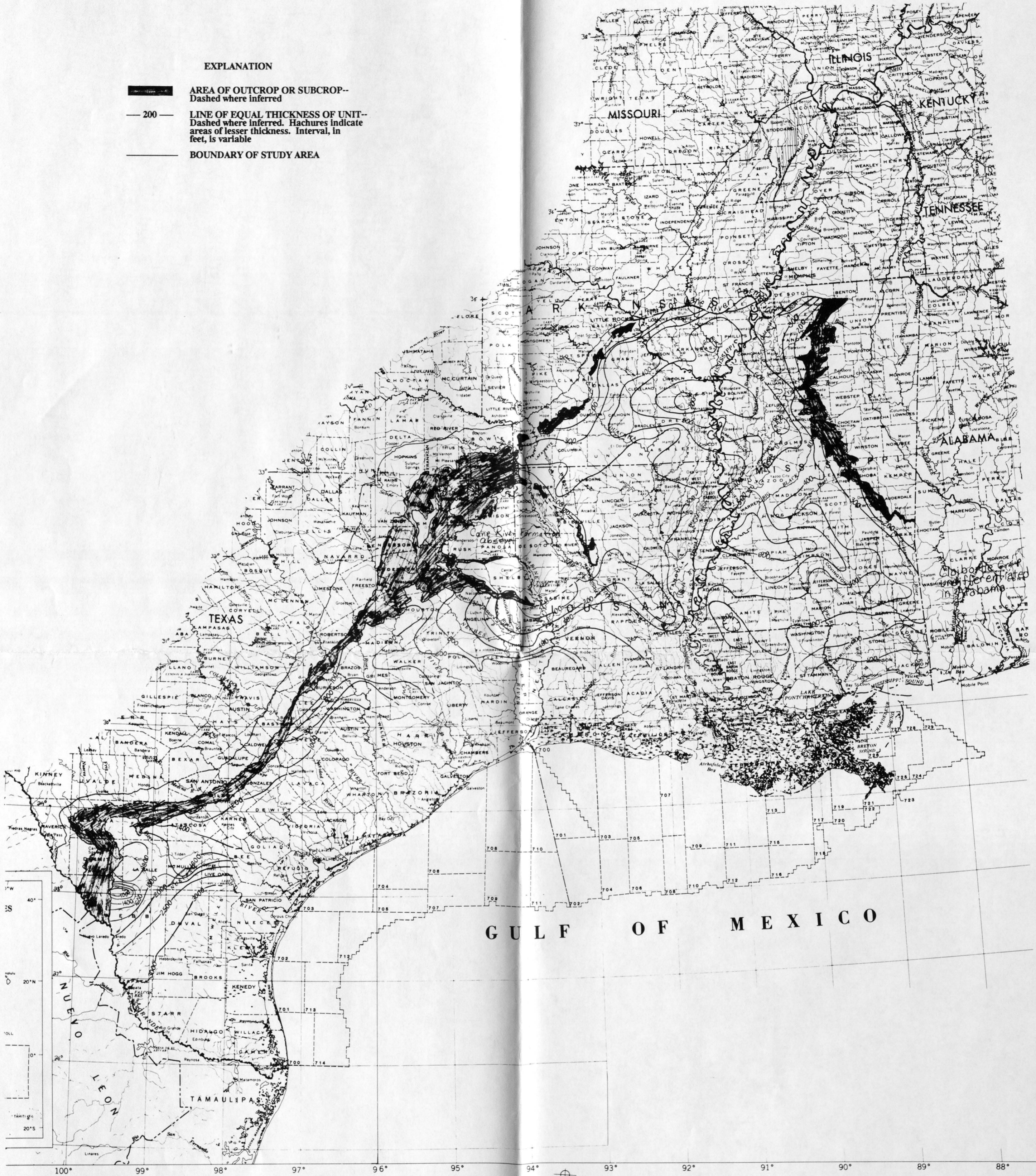


Figure 23. -- Thickness of the Cane River Formation and its equivalents.



200  
R 250  
NO 91-66