

Seattle 30' by 60' Quadrangle
Bouguer Gravity

Sources of data:
Stuart, 1965
Rogers, 1970
see index of geophysical sources for limits
of each survey

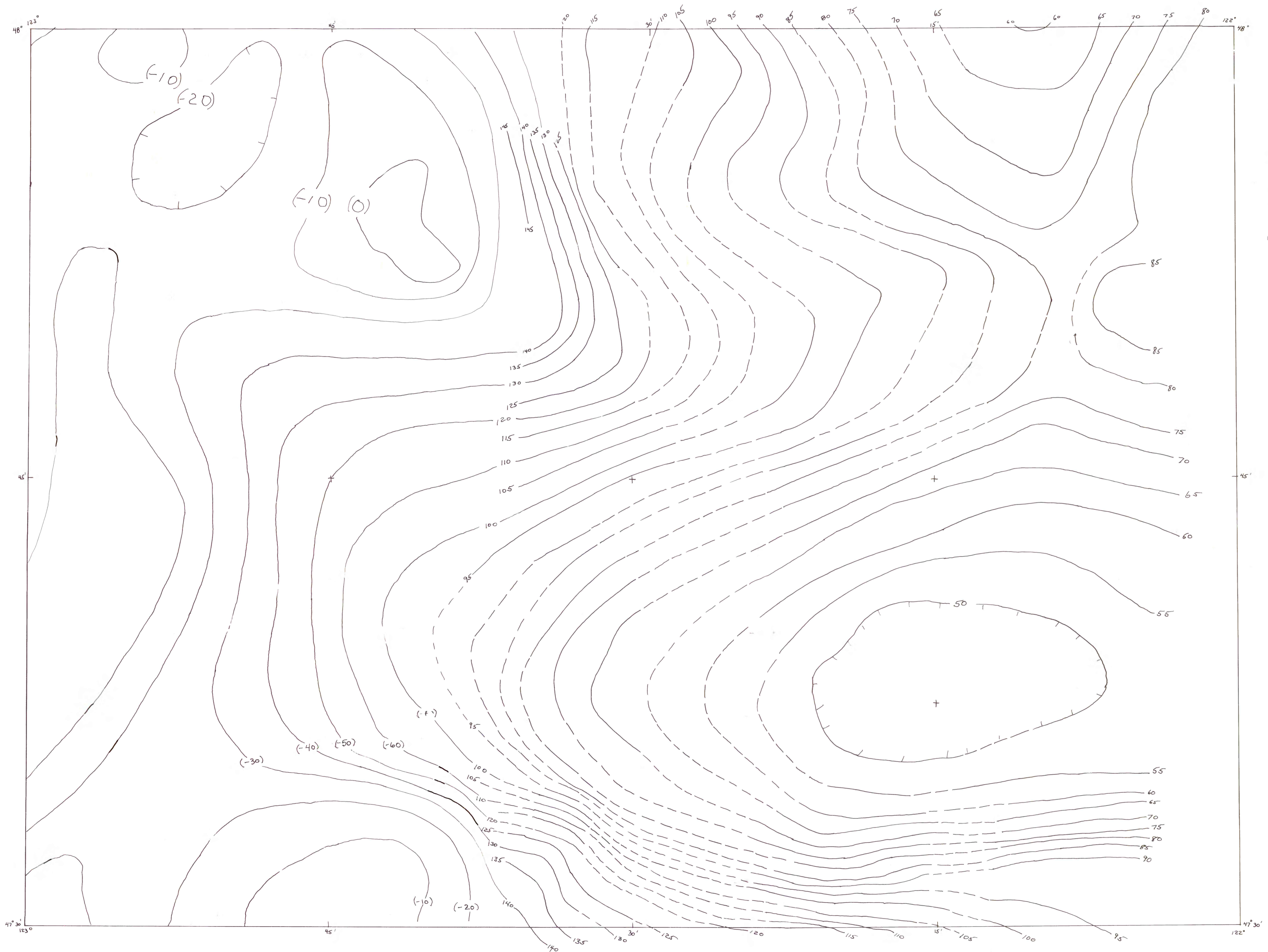
Contour of Bouguer gravity anomaly;
dashed in areas of poor control;
hachures indicate closure around
a gravity minimum

Contour intervals:
10 milligals for Stuart, 1965
5 milligals for Rogers, 1970

Notes:

Stuart, 1965
a) Assumed density 2.67 g/cm³
b) Contours west of Hood Canal drawn on
complete Bouguer anomaly minus 3 milligals

Rogers, 1970
a) Assumed density 2.3 g/cm³
b) 100 milligals arbitrarily added to
standardized gravity reading plus
combined elevation correction and
latitude correction
c) No terrain correction done but shown
to vary between .15 and .45 milligals
in the Puget lowland
d) To adjust values to absolute Woolard
Bouguer gravity add -172.22 milligals



BOUGUER GRAVITY