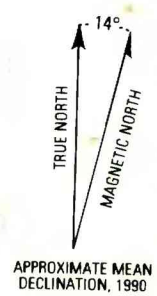
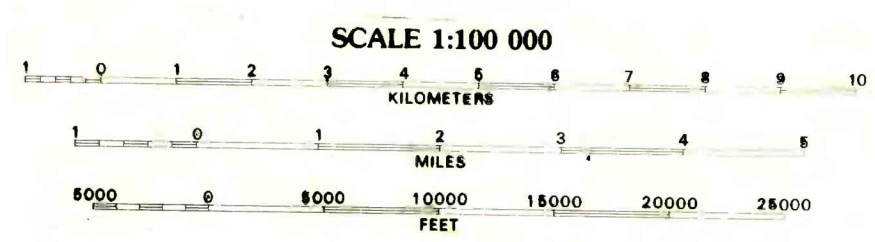
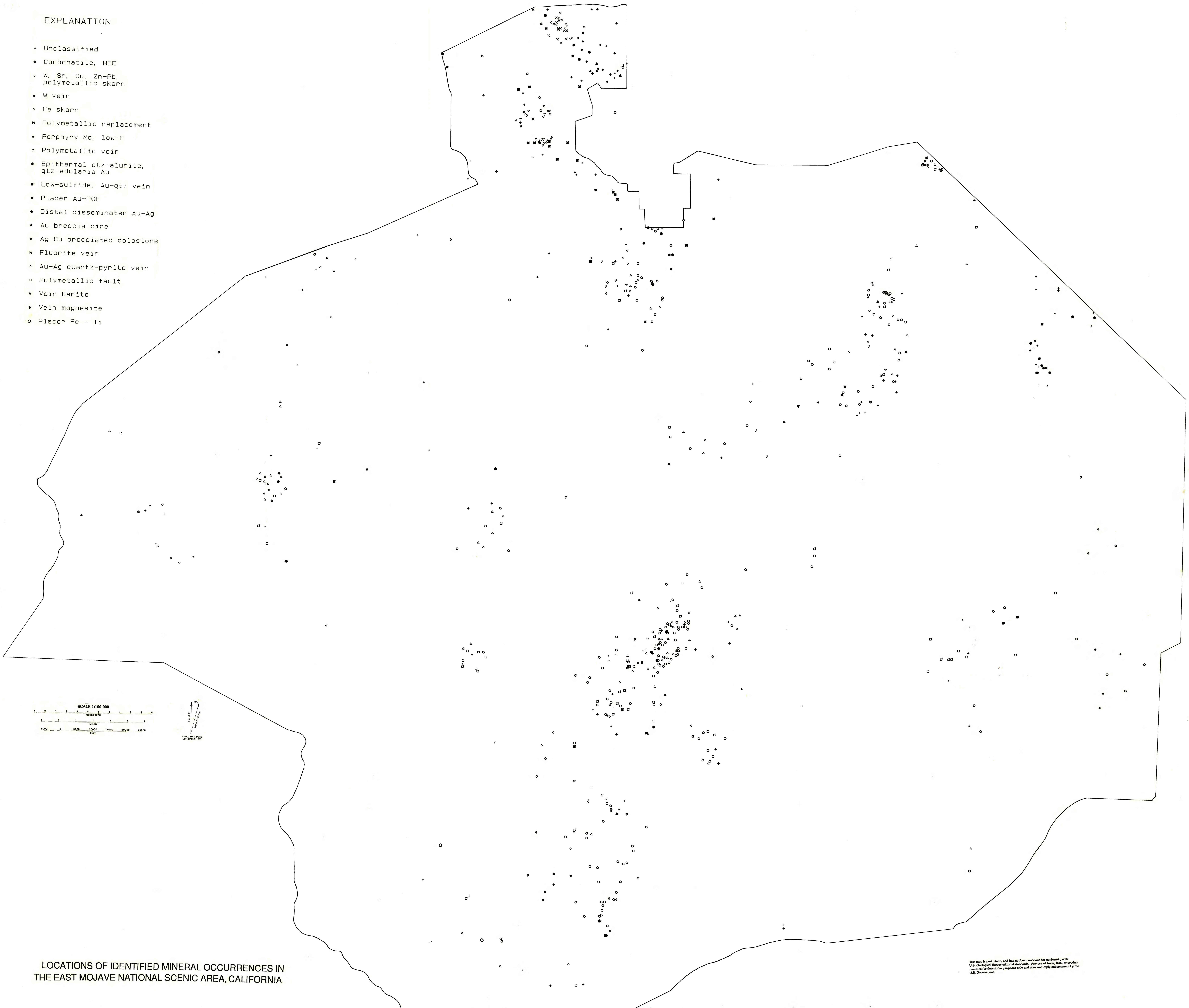


115-10-00W
35-37-59N

EXPLANATION

- Unclassified
- Carbonatite, REE
- ∇ W, Sn, Cu, Zn-Pb, polymetallic skarn
- W vein
- Fe skarn
- ✱ Polymetallic replacement
- ∇ Porphyry Mo, low-F
- Polymetallic vein
- Epithermal Qtz-alunite, Qtz-adularia Au
- Low-sulfide, Au-Qtz vein
- Placer Au-PGE
- Distal disseminated Au-Ag
- Au breccia pipe
- ✱ Ag-Cu brecciated dolostone
- ✱ Fluorite vein
- ▲ Au-Ag quartz-pyrite vein
- Polymetallic fault
- ▲ Vein barite
- Vein magnesite
- Placer Fe - Ti



LOCATIONS OF IDENTIFIED MINERAL OCCURRENCES IN
THE EAST MOJAVE NATIONAL SCENIC AREA, CALIFORNIA

This map is preliminary and has not been reviewed for conformity with U.S. Geological Survey editorial standards. Any use of trade, firm, or product names is for descriptive purposes only and does not imply endorsement by the U.S. Government.

35-37-59N
115-10-00W

11--54-58W
135-37-59N