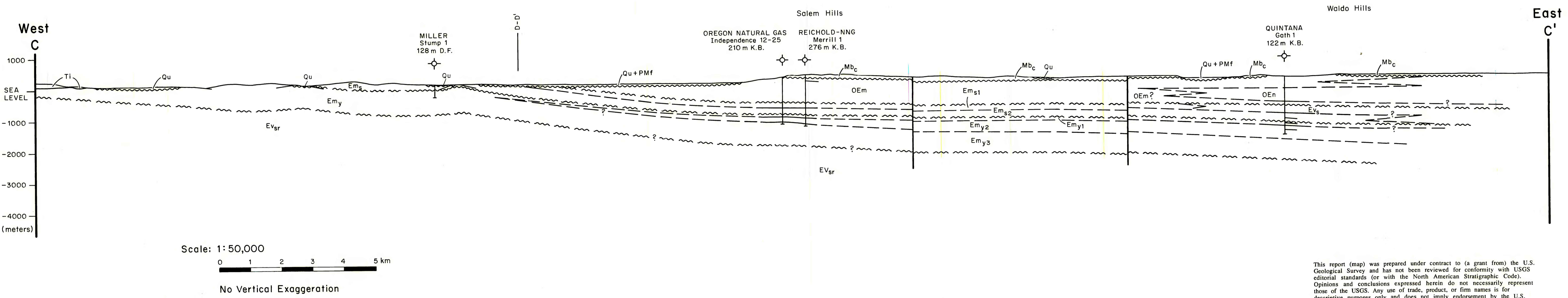


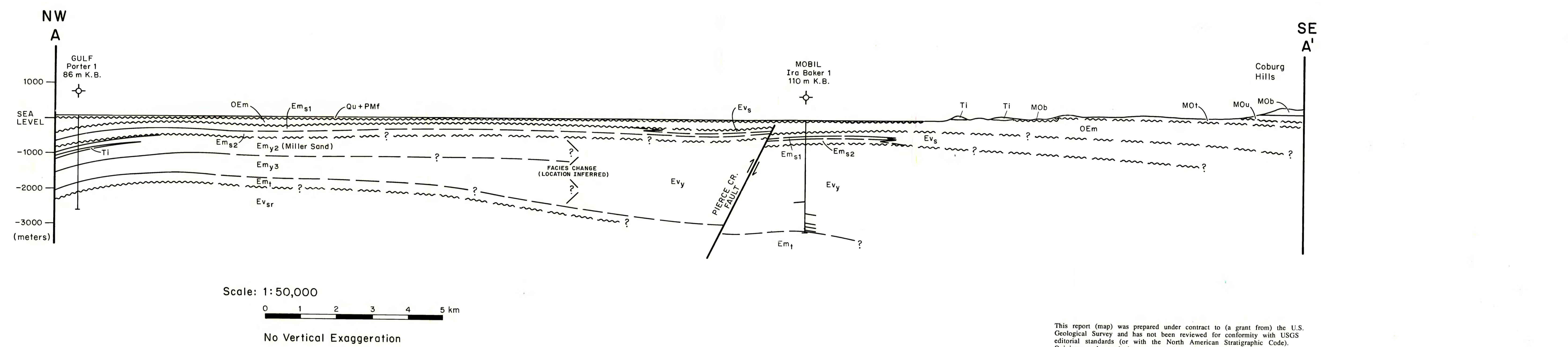
CROSS SECTION B-B', YEATS AND OTHERS, 1991

This report (map) was prepared under contract to a grant from the U.S. Geological Survey and has not been reviewed for conformity with USGS editorial standards (or with the North American Stratigraphic Code). Opinions and conclusions expressed herein do not necessarily represent those of the USGS. Any use of trade, product, or firm names is for descriptive purposes only and does not imply endorsement by the U.S. Government.



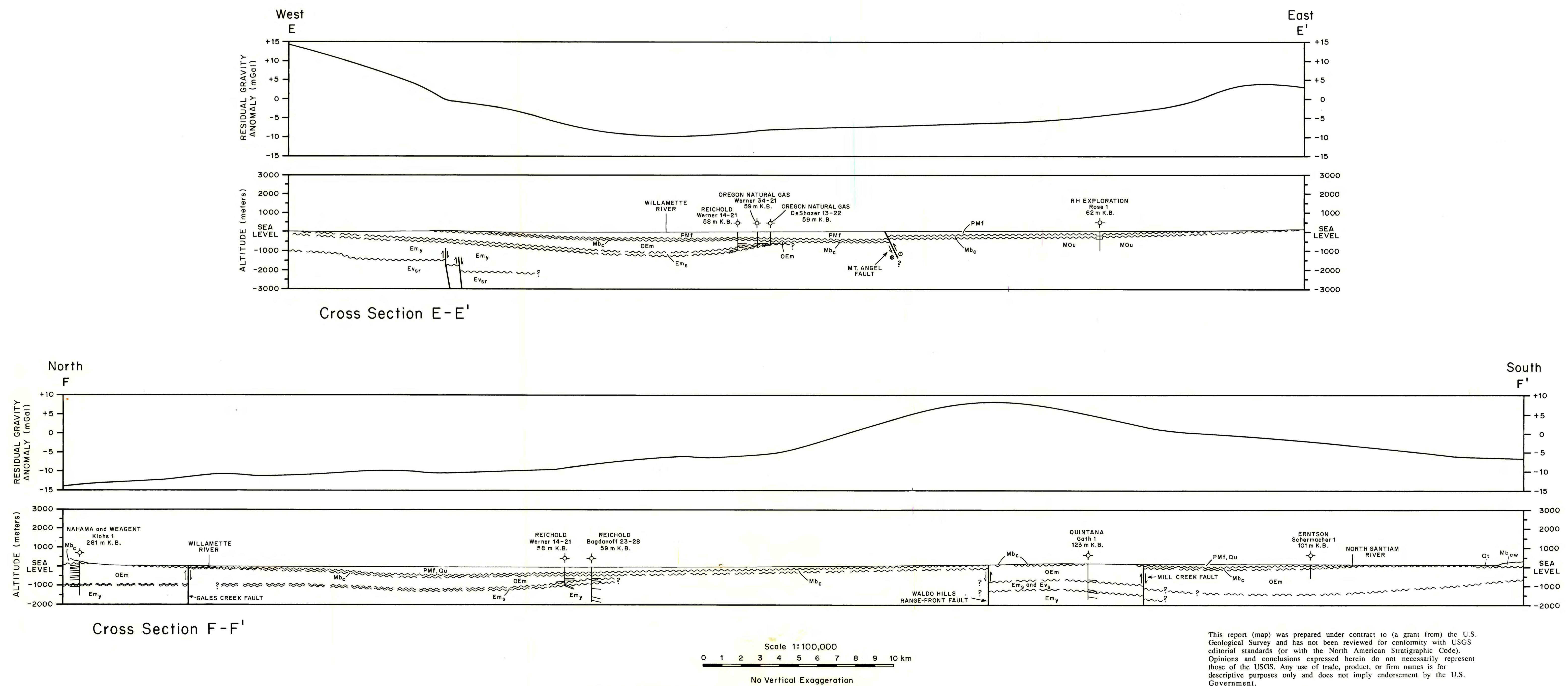
CROSS SECTION C-C', YEATS AND OTHERS, 1991

This report (map) was prepared under contract to a grant from the U.S. Geological Survey and has not been reviewed for conformity with USGS editorial standards (or with the North American Stratigraphic Code). Opinions and conclusions expressed herein do not necessarily represent those of the USGS. Any use of trade, product, or firm names is for descriptive purposes only and does not imply endorsement by the U.S. Government.



CROSS SECTION A-A', YEATS AND OTHERS 1991

This report (map) was prepared under contract to a grant from the U.S. Geological Survey and has not been reviewed for conformity with USGS editorial standards (or with the North American Stratigraphic Code). Opinions and conclusions expressed herein do not necessarily represent those of the USGS. Any use of trade, product, or firm names is for descriptive purposes only and does not imply endorsement by the U.S. Government.



CROSS SECTIONS E-E', AND F-F', YEATS AND OTHERS, 1991

This report (map) was prepared under contract to a grant from the U.S. Geological Survey and has not been reviewed for conformity with USGS editorial standards (or with the North American Stratigraphic Code). Opinions and conclusions expressed herein do not necessarily represent those of the USGS. Any use of trade, product, or firm names is for descriptive purposes only and does not imply endorsement by the U.S. Government.