

U.S. DEPARTMENT OF THE INTERIOR
U.S. GEOLOGICAL SURVEY

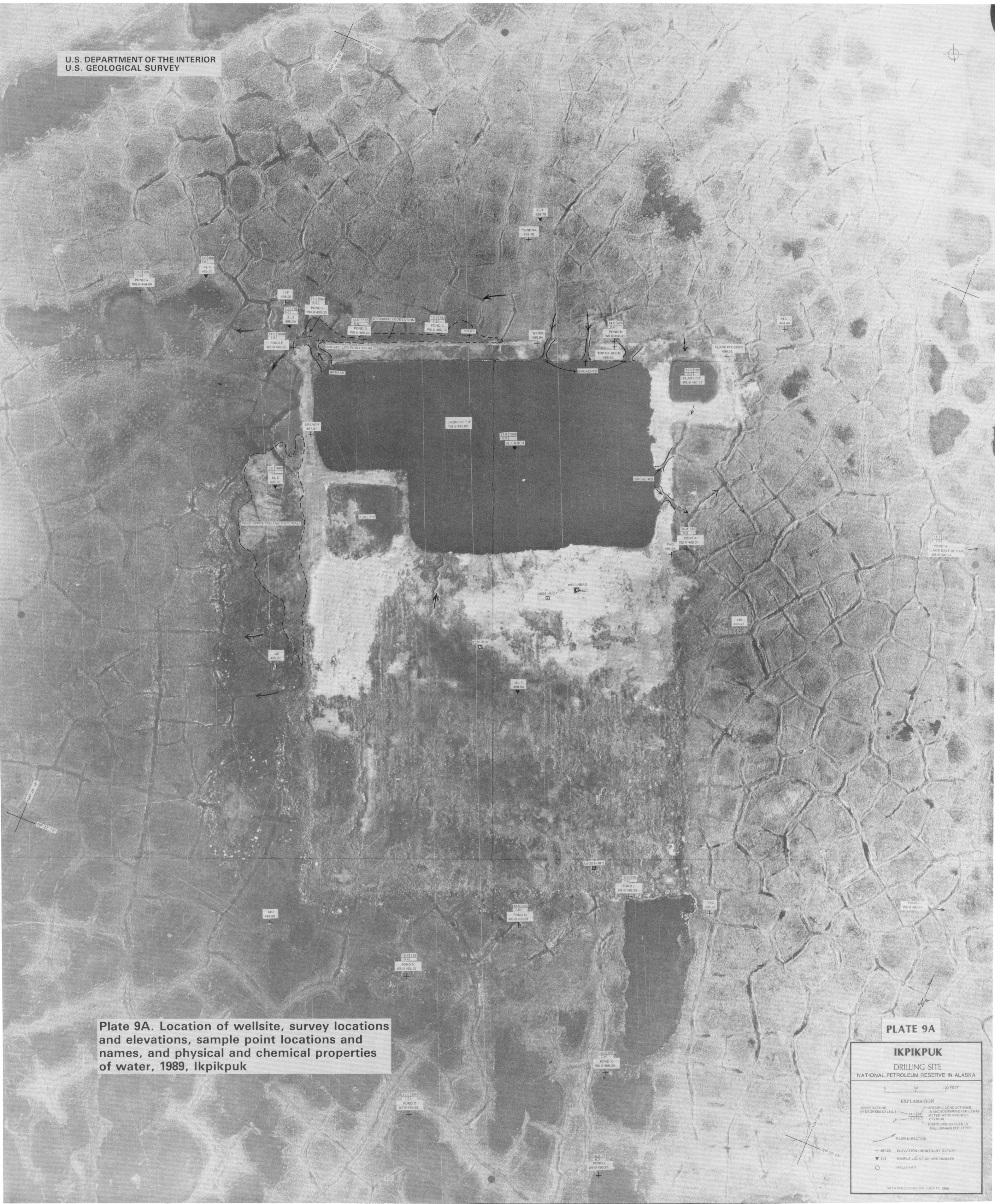


Plate 9A. Location of wellsite, survey locations and elevations, sample point locations and names, and physical and chemical properties of water, 1989, Ikpikpuq

PLATE 9A

IKPIKPUQ DRILLING SITE NATIONAL PETROLEUM RESERVE IN ALASKA	
EXPLANATION	
TEMPERATURE IN DEGREES CELSIUS	SPECIFIC CONDUCTANCE IN MICRO-SIEMENS PER CENTI- METER AT 25 DEGREES CELSIUS
DISSOLVED OXYGEN IN MILLIGRAMS PER LITER	FLOW DIRECTION
+	ELEVATION (ARBITRARY DATUM)
▲	SAMPLE LOCATION AND NUMBER
○	WELLHEAD
DATA COLLECTED ON JULY 17, 1989	