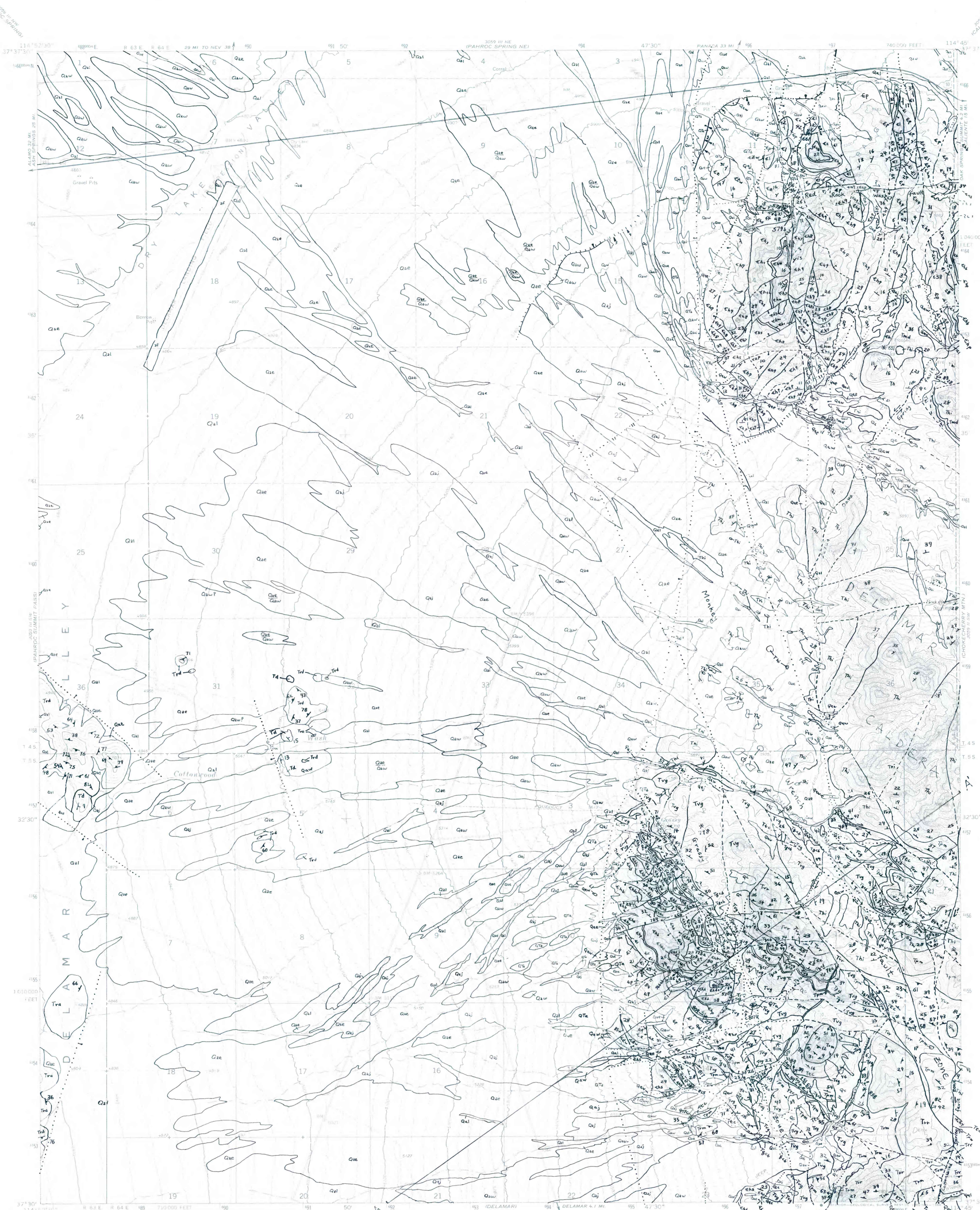


U.S. GEOLOGICAL SURVEY



Mapped, edited, and published by the Geological Survey  
 Control by USGS and USC&GS  
 Topography by photogrammetric methods from aerial  
 photographs taken 1969. Field checked 1970.  
 Polyconic projection. 1927 North American datum.  
 10,000-foot grid based on Nevada coordinate system, east zone  
 1000-meter Universal Transverse Mercator grid ticks,  
 zone 11, shown in blue.  
 To place on the standardized North American Datum 1983  
 move the projection lines 7 meters north and  
 73 meters east as shown by dashed corner ticks.  
 Fine red dashed lines indicate selected fence lines.  
 Where omitted, sand dunes have not been established.

SCALE 1:24,000  
 CONTOUR INTERVAL 20 FEET  
 NATIONAL MEGNETIC VERTICAL DATUM OF 1985  
 THIS MAP COMPLIES WITH NATIONAL MAP ACCURACY STANDARDS  
 FOR SALE BY U. S. GEOLOGICAL SURVEY DENVER, COLORADO 80225, OR RESTON, VIRGINIA 22092  
 A FOLDER DESCRIBING TOPOGRAPHIC MAPS AND SYMBOLS IS AVAILABLE ON REQUEST

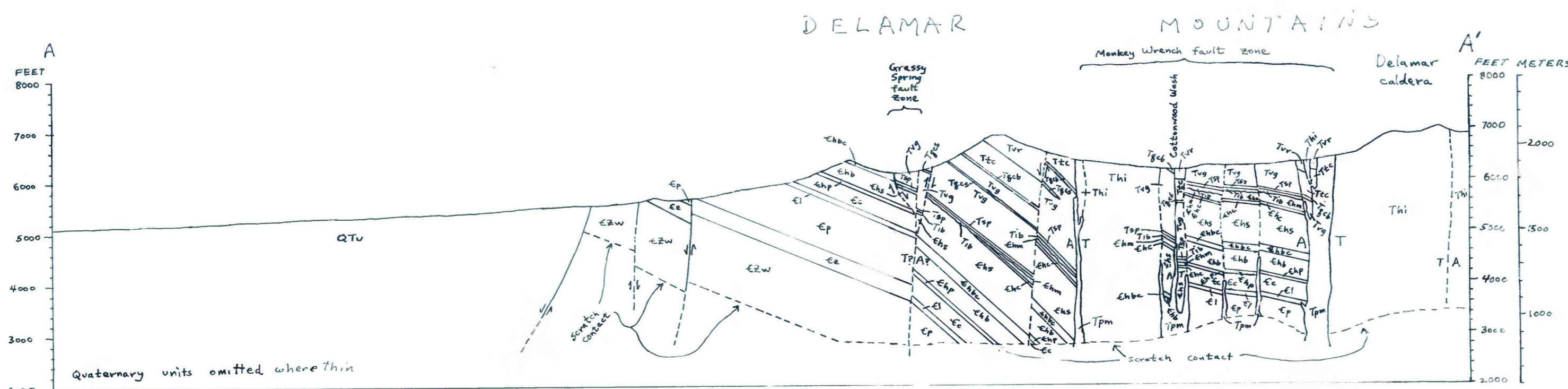
ROAD CLASSIFICATION  
 Primary highway hard surface  
 Secondary highway hard surface  
 Unimproved road  
 Interstate Route  
 U. S. Route  
 State Route  
 Light-duty road hard or improved surface  
 Unimproved road  
 Interstate Route  
 U. S. Route  
 State Route

Surface geology mapped  
 by W. C. Swadley in 1969;  
 bedrock geology mapped  
 by F. D. Rowley in 1970

**GEOLOGIC MAP OF THE PAHROC SPRING SE QUADRANGLE, LINCOLN COUNTY, NEVADA**

By  
 W. C. Swadley and P. D. Rowley  
 1992

This report is preliminary and has not been reviewed for conformity with U.S. Geological Survey standards and stratigraphic nomenclature



SWADLEY & ROWLEY - PAHROC SPRING SE QUADRANGLE