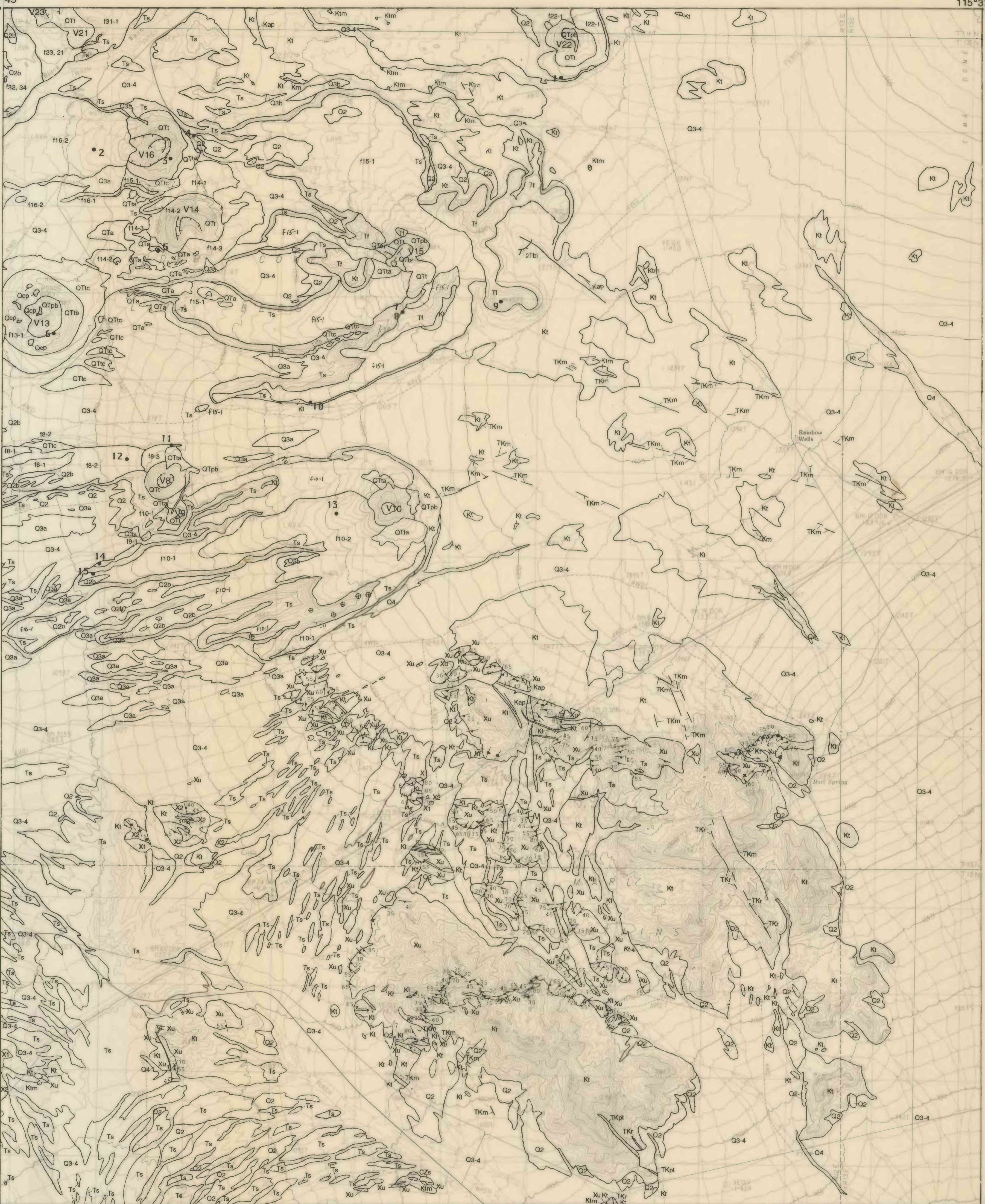


115°45'
35°15'

115°37'30"
35°15'



35°07'30"
115°45'

35°07'30"
115°37'30"

GEOLOGIC MAP OF THE MARL MOUNTAINS QUADRANGLE, SAN BERNARDINO COUNTY, CALIFORNIA

By

H.G. Wilshire

1992

This map is preliminary and has not been reviewed for conformity with U.S. Geological Survey editorial standards or with the North American Stratigraphic Code. Any use of trade, product, or firm names is for descriptive purposes only and does not imply endorsement by the U.S. Government.