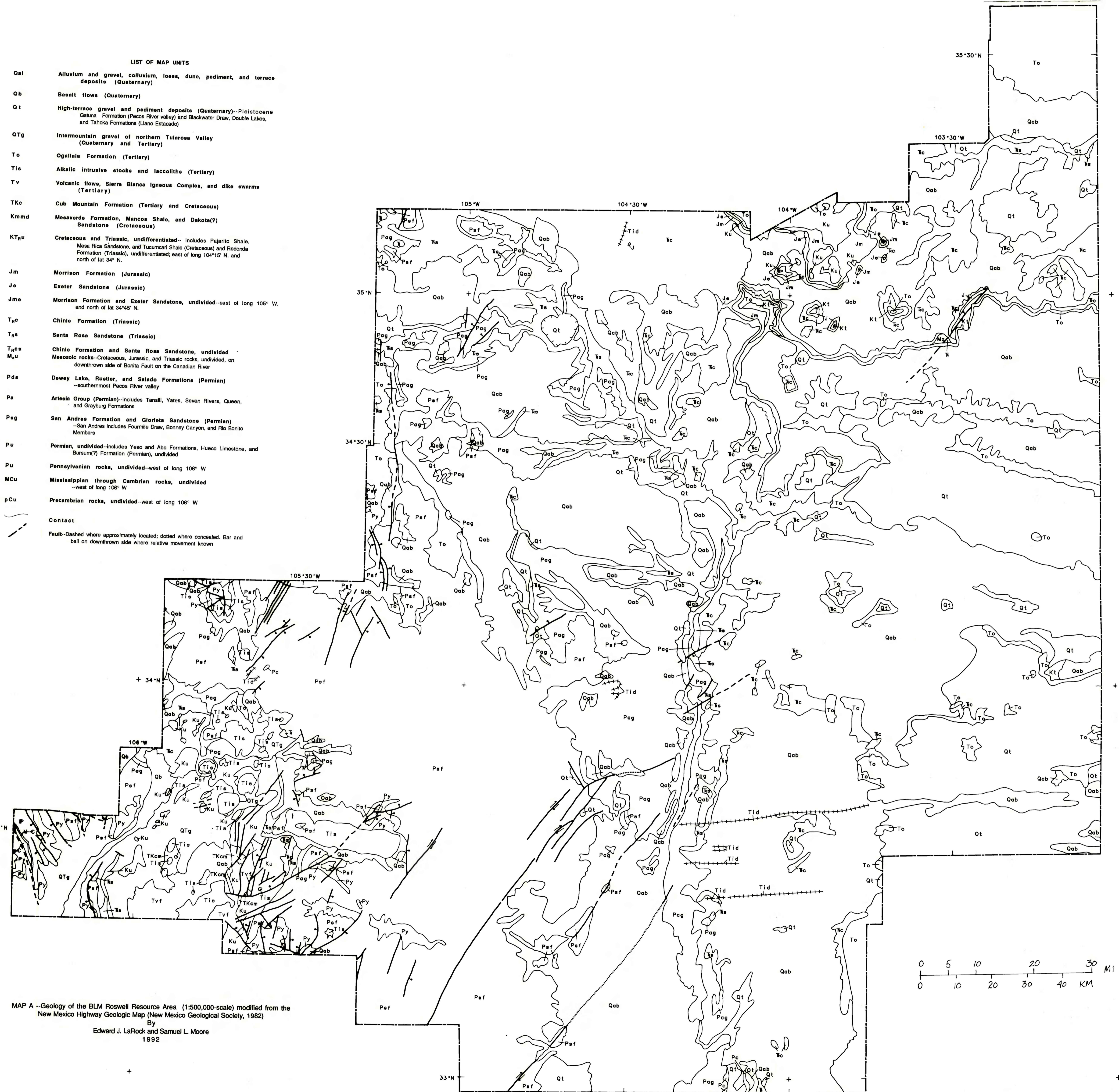


LIST OF MAP UNITS

- Qal Alluvium and gravel, colluvium, loess, dune, pediment, and terrace deposits (Quaternary)
- Qb Basalt flows (Quaternary)
- Qt High-terrace gravel and pediment deposits (Quaternary)--Pleistocene Gatura Formation (Pecos River valley) and Blackwater Draw, Double Lakes, and Tahoka Formations (Llano Estacado)
- QTg Intermountain gravel of northern Tularosa Valley (Quaternary and Tertiary)
- To Ogallala Formation (Tertiary)
- Tis Alkalic intrusive stocks and laccoliths (Tertiary)
- Tv Volcanic flows, Sierra Blanca Igneous Complex, and dike swarms (Tertiary)
- TKc Cub Mountain Formation (Tertiary and Cretaceous)
- Kmmd Mesaverde Formation, Mancos Shale, and Dakota(?) Sandstone (Cretaceous)
- KTu Cretaceous and Triassic, undifferentiated-- includes Pajarito Shale, Mesa Rica Sandstone, and Tucuman Shale (Cretaceous) and Redonda Formation (Triassic), undifferentiated; east of long 104°15' N. and north of lat 34° N.
- Jm Morrison Formation (Jurassic)
- Je Exeter Sandstone (Jurassic)
- Jme Morrison Formation and Exeter Sandstone, undivided--east of long 105° W. and north of lat 34°45' N.
- Trc Chinle Formation (Triassic)
- Trs Santa Rosa Sandstone (Triassic)
- Trcs Chinle Formation and Santa Rosa Sandstone, undivided
- Mzu Mesozoic rocks--Cretaceous, Jurassic, and Triassic rocks, undivided, on downthrown side of Bonita Fault on the Canadian River
- Pds Dewey Lake, Rustler, and Selado Formations (Permian)--southernmost Pecos River valley
- Pa Artesia Group (Permian)--includes Tansill, Yates, Seven Rivers, Queen, and Grayburg Formations
- Pag San Andres Formation and Glorieta Sandstone (Permian)--San Andres includes Fourmile Draw, Bonney Canyon, and Rio Bonito Members
- Pu Permian, undivided--includes Yeso and Abo Formations, Hueco Limestone, and Bursum(?) Formation (Permian), undivided
- Pu Pennsylvanian rocks, undivided--west of long 106° W
- MCu Mississippian through Cambrian rocks, undivided--west of long 106° W
- pCu Precambrian rocks, undivided--west of long 106° W

Contact
Fault--Dashed where approximately located; dotted where concealed. Bar and ball on downthrown side where relative movement known



MAP A --Geology of the BLM Roswell Resource Area (1:500,000-scale) modified from the New Mexico Highway Geologic Map (New Mexico Geological Society, 1982)
By
Edward J. LaRock and Samuel L. Moore
1992