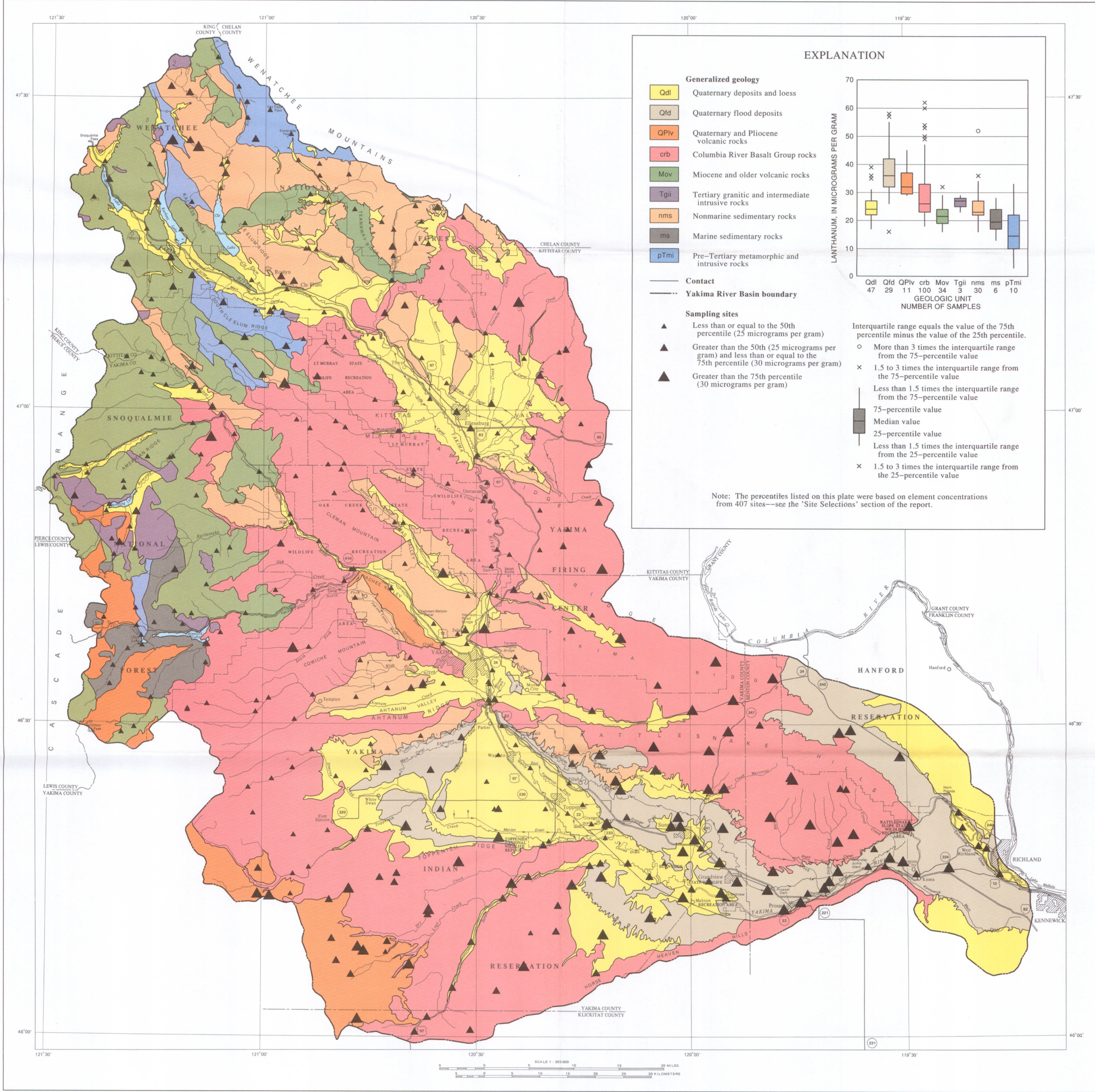
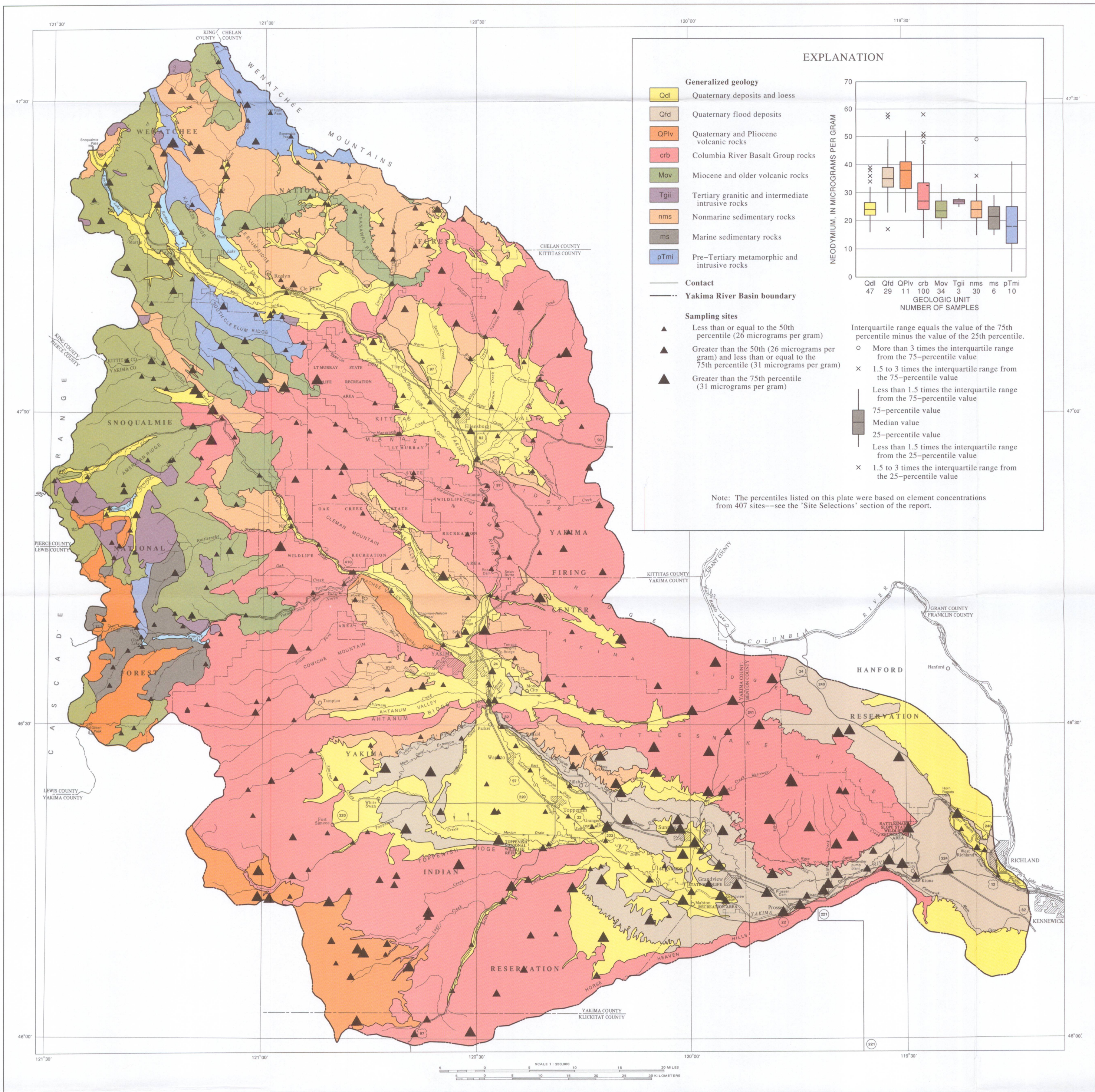


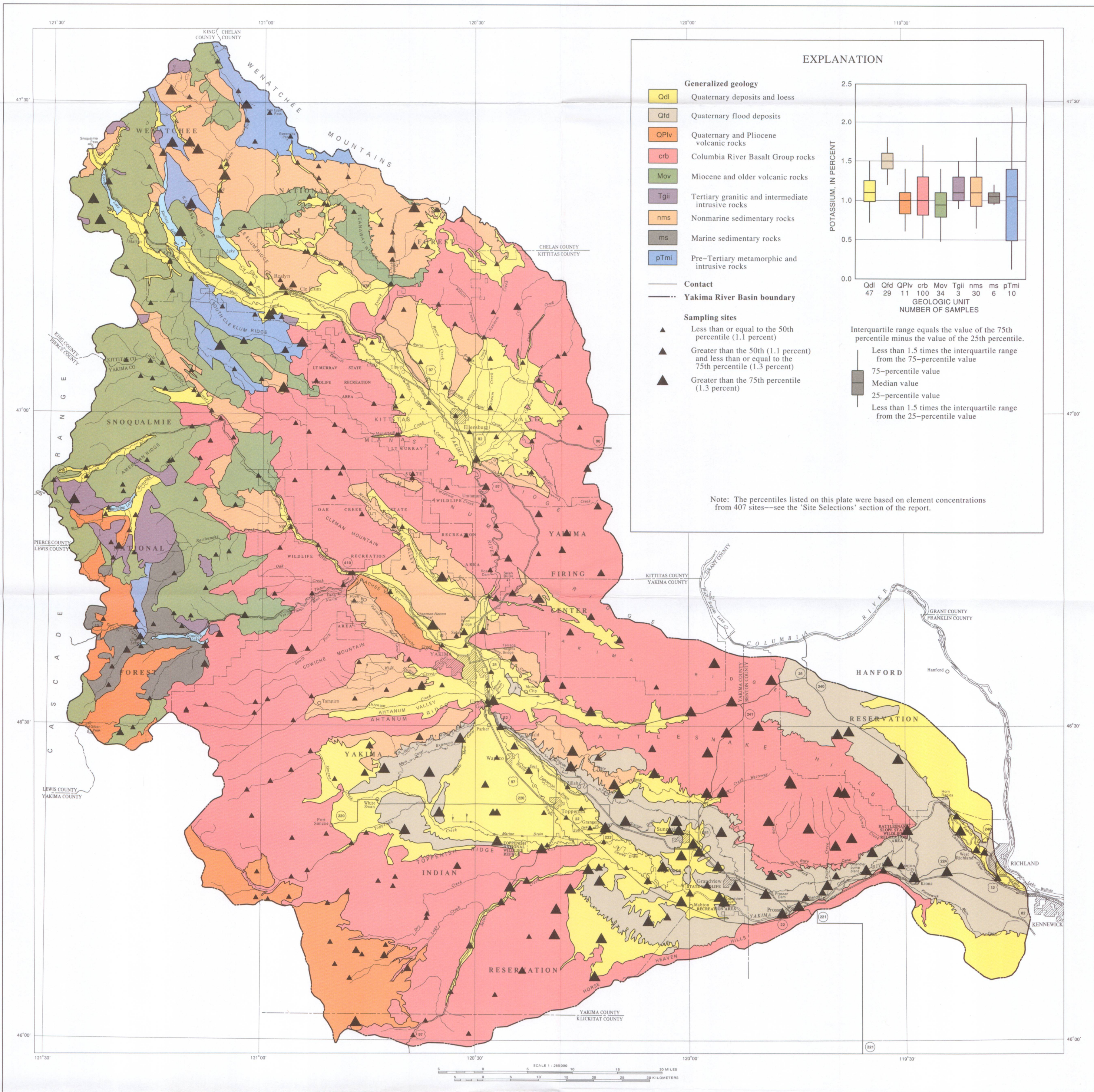
CERIUM



LANTHANUM



NEODYMIUM



POTASSIUM

MAPS SHOWING CONCENTRATIONS OF CERIUM, LANTHANUM, NEODYMIUM, AND POTASSIUM IN STREAMBED SEDIMENT OF LOWER- AND HIGHER-ORDER STREAMS, IN SOIL SAMPLES, AND IN URBAN-STORM-WATER DRAINS, YAKIMA RIVER BASIN, WASHINGTON, 1987

By
Kenneth A. Skach, Beverly J. Heskiss, Marshall W. Gannett, and Gregory J. Fuhrer
1994