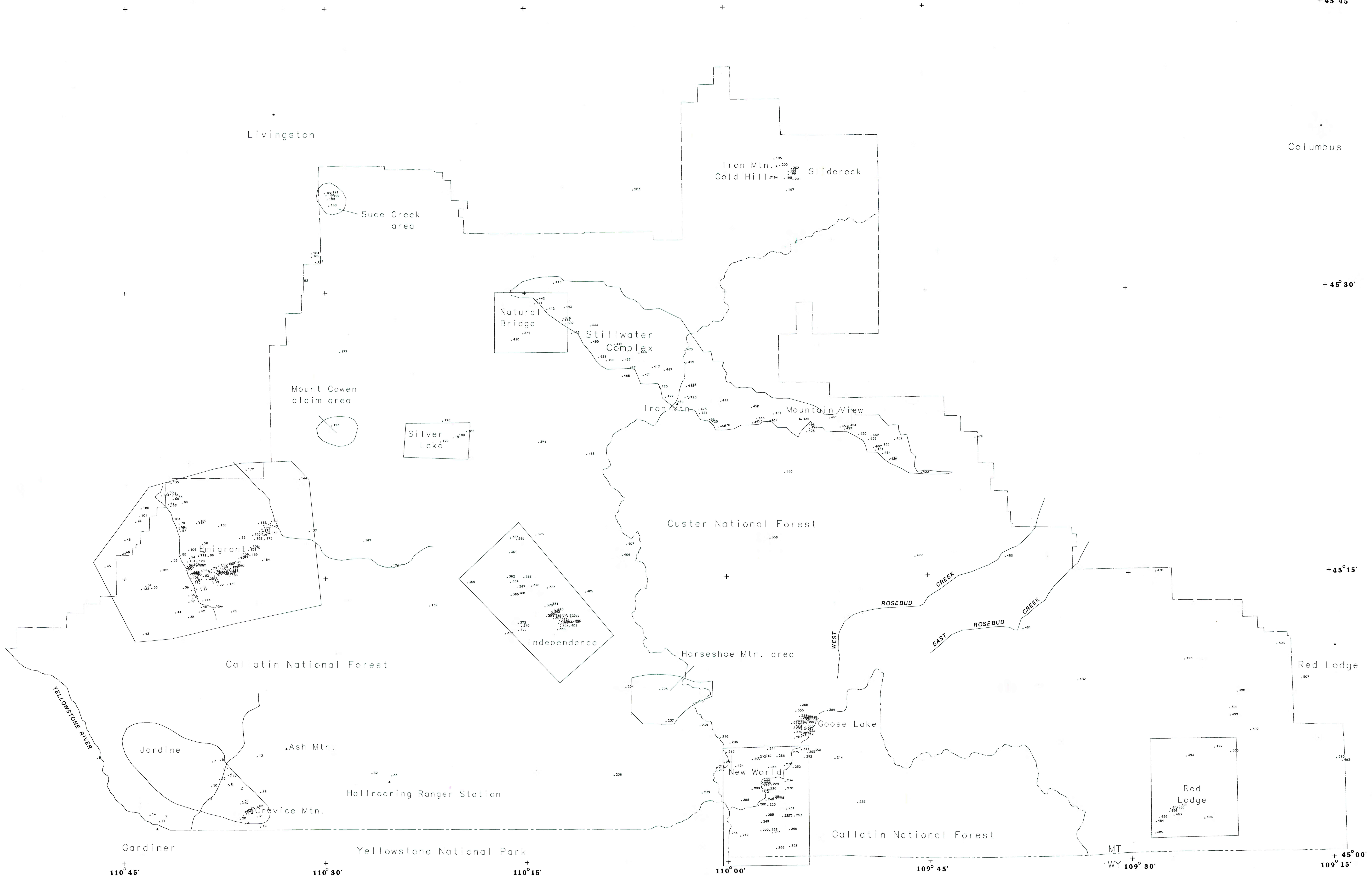


+ 45° 45'



MINES, PROSPECTS, AND MINERAL OCCURRENCES
OF THE
ABSAROKA-BEARTOOTH STUDY AREA

By
J.M. Hammarstrom
1993

Mining district outlines shown for reference
Site numbers keyed to appendix A

This map is preliminary and has not been reviewed for conformity with U. S. Geological Survey editorial standards nor with the North American stratigraphic code.