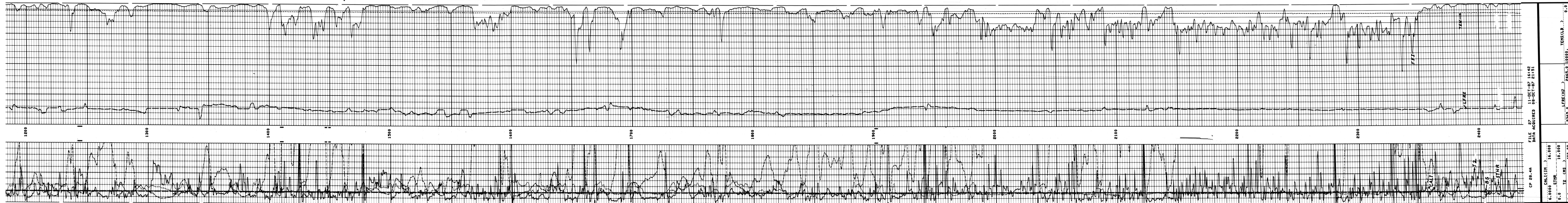


CP 30.22 FILE 3 00--00 0111
 INPUT FILES 00--00 0111
 DATA ACQUIRED 00--00 0111

NAME	VALUE	UNIT
RS	7.0000	IN
SR	3500000	NS/M
SRM	3500000	NS/M
SRM2	3500000	NS/M
SRM3	3500000	NS/M
SRM4	3500000	NS/M
SRM5	3500000	NS/M
SRM6	3500000	NS/M
SRM7	3500000	NS/M
SRM8	3500000	NS/M
SRM9	3500000	NS/M
SRM10	3500000	NS/M
SRM11	3500000	NS/M
SRM12	3500000	NS/M
SRM13	3500000	NS/M
SRM14	3500000	NS/M
SRM15	3500000	NS/M
SRM16	3500000	NS/M
SRM17	3500000	NS/M
SRM18	3500000	NS/M
SRM19	3500000	NS/M
SRM20	3500000	NS/M
SRM21	3500000	NS/M
SRM22	3500000	NS/M
SRM23	3500000	NS/M
SRM24	3500000	NS/M
SRM25	3500000	NS/M
SRM26	3500000	NS/M
SRM27	3500000	NS/M
SRM28	3500000	NS/M
SRM29	3500000	NS/M
SRM30	3500000	NS/M
SRM31	3500000	NS/M
SRM32	3500000	NS/M
SRM33	3500000	NS/M
SRM34	3500000	NS/M
SRM35	3500000	NS/M
SRM36	3500000	NS/M
SRM37	3500000	NS/M
SRM38	3500000	NS/M
SRM39	3500000	NS/M
SRM40	3500000	NS/M
SRM41	3500000	NS/M
SRM42	3500000	NS/M
SRM43	3500000	NS/M
SRM44	3500000	NS/M
SRM45	3500000	NS/M
SRM46	3500000	NS/M
SRM47	3500000	NS/M
SRM48	3500000	NS/M
SRM49	3500000	NS/M
SRM50	3500000	NS/M
SRM51	3500000	NS/M
SRM52	3500000	NS/M
SRM53	3500000	NS/M
SRM54	3500000	NS/M
SRM55	3500000	NS/M
SRM56	3500000	NS/M
SRM57	3500000	NS/M
SRM58	3500000	NS/M
SRM59	3500000	NS/M
SRM60	3500000	NS/M
SRM61	3500000	NS/M
SRM62	3500000	NS/M
SRM63	3500000	NS/M
SRM64	3500000	NS/M
SRM65	3500000	NS/M
SRM66	3500000	NS/M
SRM67	3500000	NS/M
SRM68	3500000	NS/M
SRM69	3500000	NS/M
SRM70	3500000	NS/M
SRM71	3500000	NS/M
SRM72	3500000	NS/M
SRM73	3500000	NS/M
SRM74	3500000	NS/M
SRM75	3500000	NS/M
SRM76	3500000	NS/M
SRM77	3500000	NS/M
SRM78	3500000	NS/M
SRM79	3500000	NS/M
SRM80	3500000	NS/M
SRM81	3500000	NS/M
SRM82	3500000	NS/M
SRM83	3500000	NS/M
SRM84	3500000	NS/M
SRM85	3500000	NS/M
SRM86	3500000	NS/M
SRM87	3500000	NS/M
SRM88	3500000	NS/M
SRM89	3500000	NS/M
SRM90	3500000	NS/M
SRM91	3500000	NS/M
SRM92	3500000	NS/M
SRM93	3500000	NS/M
SRM94	3500000	NS/M
SRM95	3500000	NS/M
SRM96	3500000	NS/M
SRM97	3500000	NS/M
SRM98	3500000	NS/M
SRM99	3500000	NS/M
SRM100	3500000	NS/M



CP 28.44 FILE 27 11-OCT-87 16:42
 DATA ACQUIRED 00--00 0111

NAME	VALUE	UNIT
RS	7.0000	IN
SR	3500000	NS/M
SRM	3500000	NS/M
SRM2	3500000	NS/M
SRM3	3500000	NS/M
SRM4	3500000	NS/M
SRM5	3500000	NS/M
SRM6	3500000	NS/M
SRM7	3500000	NS/M
SRM8	3500000	NS/M
SRM9	3500000	NS/M
SRM10	3500000	NS/M
SRM11	3500000	NS/M
SRM12	3500000	NS/M
SRM13	3500000	NS/M
SRM14	3500000	NS/M
SRM15	3500000	NS/M
SRM16	3500000	NS/M
SRM17	3500000	NS/M
SRM18	3500000	NS/M
SRM19	3500000	NS/M
SRM20	3500000	NS/M
SRM21	3500000	NS/M
SRM22	3500000	NS/M
SRM23	3500000	NS/M
SRM24	3500000	NS/M
SRM25	3500000	NS/M
SRM26	3500000	NS/M
SRM27	3500000	NS/M
SRM28	3500000	NS/M
SRM29	3500000	NS/M
SRM30	3500000	NS/M
SRM31	3500000	NS/M
SRM32	3500000	NS/M
SRM33	3500000	NS/M
SRM34	3500000	NS/M
SRM35	3500000	NS/M
SRM36	3500000	NS/M
SRM37	3500000	NS/M
SRM38	3500000	NS/M
SRM39	3500000	NS/M
SRM40	3500000	NS/M
SRM41	3500000	NS/M
SRM42	3500000	NS/M
SRM43	3500000	NS/M
SRM44	3500000	NS/M
SRM45	3500000	NS/M
SRM46	3500000	NS/M
SRM47	3500000	NS/M
SRM48	3500000	NS/M
SRM49	3500000	NS/M
SRM50	3500000	NS/M
SRM51	3500000	NS/M
SRM52	3500000	NS/M
SRM53	3500000	NS/M
SRM54	3500000	NS/M
SRM55	3500000	NS/M
SRM56	3500000	NS/M
SRM57	3500000	NS/M
SRM58	3500000	NS/M
SRM59	3500000	NS/M
SRM60	3500000	NS/M
SRM61	3500000	NS/M
SRM62	3500000	NS/M
SRM63	3500000	NS/M
SRM64	3500000	NS/M
SRM65	3500000	NS/M
SRM66	3500000	NS/M
SRM67	3500000	NS/M
SRM68	3500000	NS/M
SRM69	3500000	NS/M
SRM70	3500000	NS/M
SRM71	3500000	NS/M
SRM72	3500000	NS/M
SRM73	3500000	NS/M
SRM74	3500000	NS/M
SRM75	3500000	NS/M
SRM76	3500000	NS/M
SRM77	3500000	NS/M
SRM78	3500000	NS/M
SRM79	3500000	NS/M
SRM80	3500000	NS/M
SRM81	3500000	NS/M
SRM82	3500000	NS/M
SRM83	3500000	NS/M
SRM84	3500000	NS/M
SRM85	3500000	NS/M
SRM86	3500000	NS/M
SRM87	3500000	NS/M
SRM88	3500000	NS/M
SRM89	3500000	NS/M
SRM90	3500000	NS/M
SRM91	3500000	NS/M
SRM92	3500000	NS/M
SRM93	3500000	NS/M
SRM94	3500000	NS/M
SRM95	3500000	NS/M
SRM96	3500000	NS/M
SRM97	3500000	NS/M
SRM98	3500000	NS/M
SRM99	3500000	NS/M
SRM100	3500000	NS/M

BEFORE SURVEY CALIBRATION SUMMARY
 PERFORMED: 09-OCT-87 18:19
 PROGRAM FILE: NML
 VERSION: 87.APC 06/06/89

CALIBRATION SUMMARY
 AVERAGE NOISE MEASURED (HARDWARE DETECTION) = 1.15018
 AVERAGE NOISE MEASURED (SOFTWARE DETECTION) = 1.15291
 DC LEVEL IN UNSCALED REGION = 0.0
 DC LEVEL IN SCALED REGION = 0.0

CALIBRATION SUMMARY
 SOFTWARE-DETECTED
 HARDWARE-DETECTED
 TUNE FREQ. (HZ) = 2990.00
 PHAS = .780
 GAIN = 1.127

ELECTRONICS CALIBRATION SUMMARY
 TUNE FREQ. = 5 FPM LAMBDA FREQUENCY (HZ) = 2990.00
 CP 27.APC FILE 1 09-OCT-87 18:19