

FINAL PRINT
Schlumberger

BOREHOLE COMPENSATED SONIC

COMPANY: U.S.G.S.
WELL: U.S.G.S. CASTLE PINES
FIELD: WILD CAT
COUNTY: DOUGLAS
STATE: COLORADO
NATION: U.S.A.
LOCATION: NE/SH 2050 FSL & 2150 FHL

SEC: 9 **THP:** 7S **RGE:** 67H

PERMANENT DATUM: GL **ELEVATIONS:**
ELEV. OF PERM. DATUM: 6600.0 F **KB:** 6606.0 F
LOG MEASURED FROM: SURF. CASIN **TI:** 6605.0 F
DRLG. MEASURED FROM: GL **GL:** 6600.0 F

DATE: 8 OCT 87
RUN NO: 1

DEPTH-DRILLER: 2435.0 F
DEPTH-LOGGER: 2439.0 F
BTM. LOG INTERVAL: 2396.0 F
TDP LOG INTERVAL: 42.0 F

CASING-DRILLER: 40.0 F
CASING-LOGGER: 42.0 F
CASING: 8 5/8
HEIGHT: 36.0000 LB/F
BTM. LOG INTERVAL: 7 7/8
DEPTH: 2435.0 F

OTHER SERVICES-
DIL
LDT
CNL
NML
ML

PROGRAM
TAPE NO: 28.4A
SERVICE ORDER NO: 479827

TYPE FLUID IN HOLE: BENTONITE
DENSITY: 9.50 LB/G
PHI COSSITY: 38.5 S
FLUID LOSS: 9.0 CS
SOURCE OF SAMPLE: MUD PIT DHM AT 64.0 DEGF
9.170 DHM AT 64.0 DEGF
22.50 DHM AT 64.0 DEGF
RIC: MEAS. DHM AT 80.0 DEGF
7.484 DHM AT 80.0 DEGF
RIF AT BHT: 16.93 DHM AT 80.0 DEGF

TIME CIRC. STOPPED: 18:00 10/8
TIME LOGGER ON BTM.: 21:30 10/8

MAX. REC. TEMP: 80.0 DEGF

LOGGING UNIT NO: 8931
LOGGING UNIT LOC: F. MORGAN/4321
RECORDED BY: S. ROSSON
WITNESSED BY: S. ROSSON

REMARKS:
SP SHIFT AT 2844 FT. BY S. ROSSON
CASH, MARTINEZ & HANBURN

EQUIPMENT NUMBERS-
DIS 1094 MCDR 1290 SLS 671
SLC 277 SLM 1590 NLM 1389
CPU 535

ALL INTERPRETATIONS ARE OPINIONS BASED ON INFERENCES FROM ELECTRICAL OR OTHER MEASUREMENTS AND WE CANNOT, AND DO NOT GUARANTEE, THE ACCURACY OR CORRECTNESS OF THE INFORMATION CONTAINED HEREIN. WE ARE NOT RESPONSIBLE FOR ANY LOSS, COSTS, DAMAGES OR EXPENSES INCURRED OR SUSTAINED BY ANYONE RESULTING FROM ANY INTERPRETATION MADE BY ANY OF OUR OFFICERS, AGENTS OR EMPLOYEES. WE ACCEPT NO LIABILITY FOR SUCH DAMAGES, LOSSES, COSTS AND CONDITIONS AS SET FORTH IN OUR CURRENT PRICE SCHEDULE.

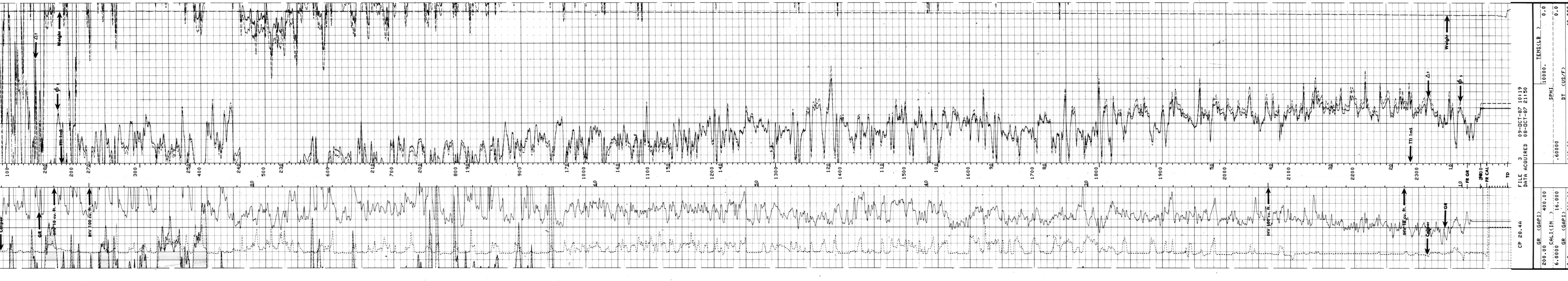
CP 28.4A FILE 102 08-DCT-87 23226
DATA ACQUIRED 08-DCT-87 22733

EVENT MARK SUMMARY:
OUTPUT INTERVAL DEPTH TRACK
BETWEEN PIPS EDGE

ITV 10.00000 F3 LEFT EDGE
ITT -00.00000 S RIGHT EDGE

GR (GRAPI) 400.00
6.0000 CAL (LIN) 16.000
GR (GRAPI) 800.00

TENS(LB) 0.0
SPHL 10000.
DT (US/F) 0.0
40.000



CP 28.4A FILE 3 09-DCT-87 10119
DATA ACQUIRED 08-DCT-87 21150

GR (GRAPI) 400.00
6.0000 CAL (LIN) 16.000
GR (GRAPI) 800.00

TENS(LB) 0.0
SPHL 10000.
DT (US/F) 0.0
40.000

SENSOR MEASURE POINT TO TOOL ZERO

NAME	VALUE	UNIT
AMPL	43.9	FEET
CBL	43.9	FEET
TTI	174	39.2 FEET
TT	43.9	FEET
SLTT	43.9	FEET
ULD	6.4	FEET
SFL	6.4	FEET
SPAR	2.5	FEET
NOIS	2.5	FEET

NAME	VALUE	UNIT
SPFS	100.000	US/F
DSIN	89.000	US
MWD	2.50000	LB/G
FPH	3.00000	DHM
BS	7.87500	IN
PP	RECD	

PARAMETERS

NAME	VALUE	UNIT
SPFS	100.000	US/F
DSIN	89.000	US
MWD	2.50000	LB/G
FPH	3.00000	DHM
BS	7.87500	IN
PP	RECD	

TAPE NOT MADE