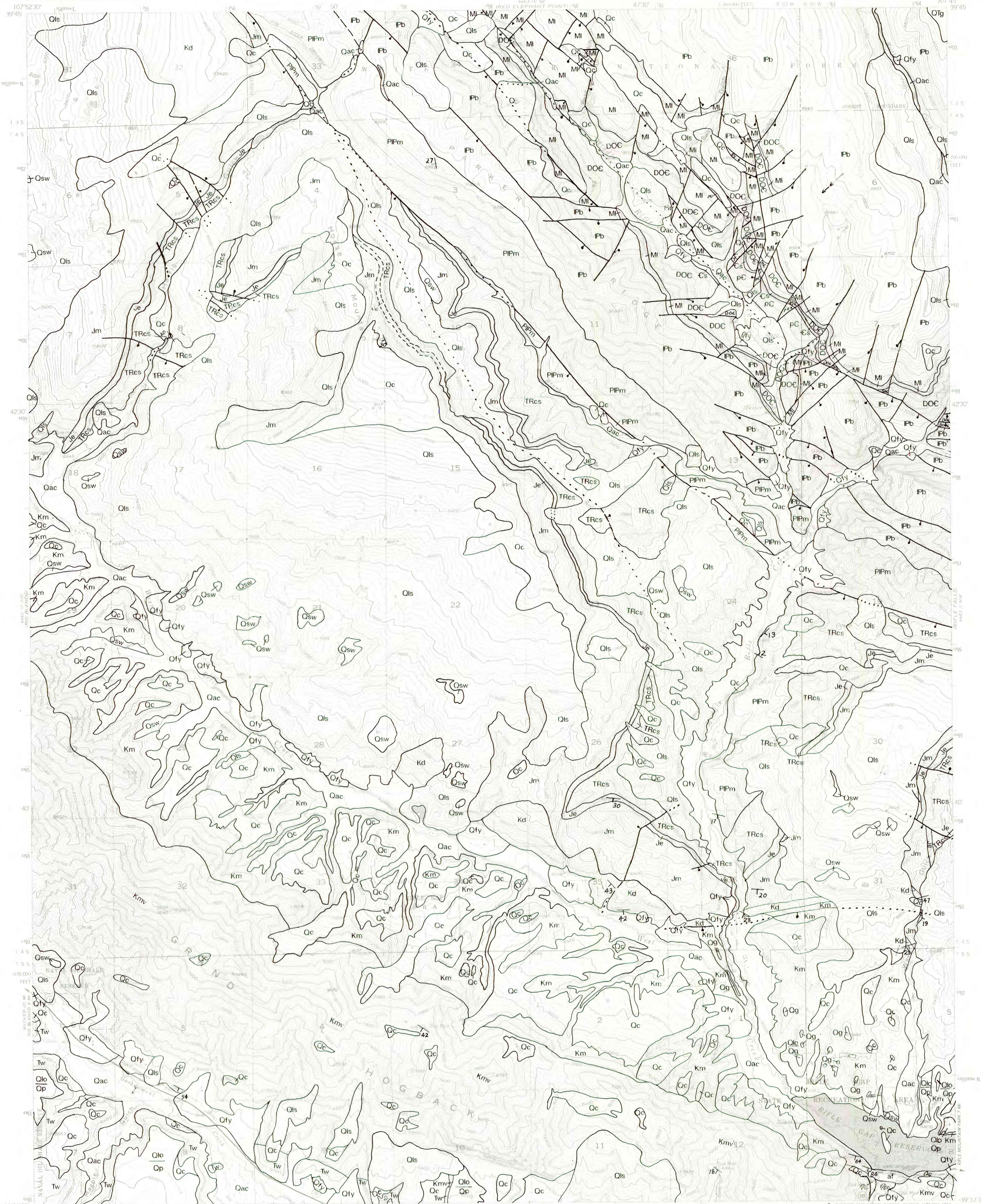


U.S. DEPARTMENT OF THE INTERIOR
U.S. GEOLOGICAL SURVEY



Mapped, edited, and published by the Geological Survey
Control by USGS and NOS/NOAA
Topography from aerial photographs by multiplex methods
Aerial photographs taken 1948 Field check 1952
Polyconic projection, 1927 North American Datum
10,000-foot grid based on Colorado coordinate system
central zone
Dashed land lines indicate approximate locations
All mines are inactive unless otherwise indicated
1,000-meter Universal Transverse Mercator grid ticks
zone 13, shown in blue

This map is preliminary and has not been reviewed for conformity with U.S. Geological Survey editorial standards or with the North American Stratigraphic Code.
Any use of trade, product, or firm names is for descriptive purposes only and does not imply endorsement by the U.S. Government.
Geology mapped July 1992-1993
SCALE 1:24,000
CONTOUR INTERVAL 40 FEET
NATIONAL GEODETIC VERTICAL DATUM OF 1929
UTM GRID AND 1987 MAGNETIC NORTH
DECLINATION AT CENTER OF SHEET

PRELIMINARY GEOLOGIC MAP OF THE HORSE MOUNTAIN QUADRANGLE, GARFIELD COUNTY, COLORADO

by George M. Fairer, Morris W. Green, and Ralph R. Shroba