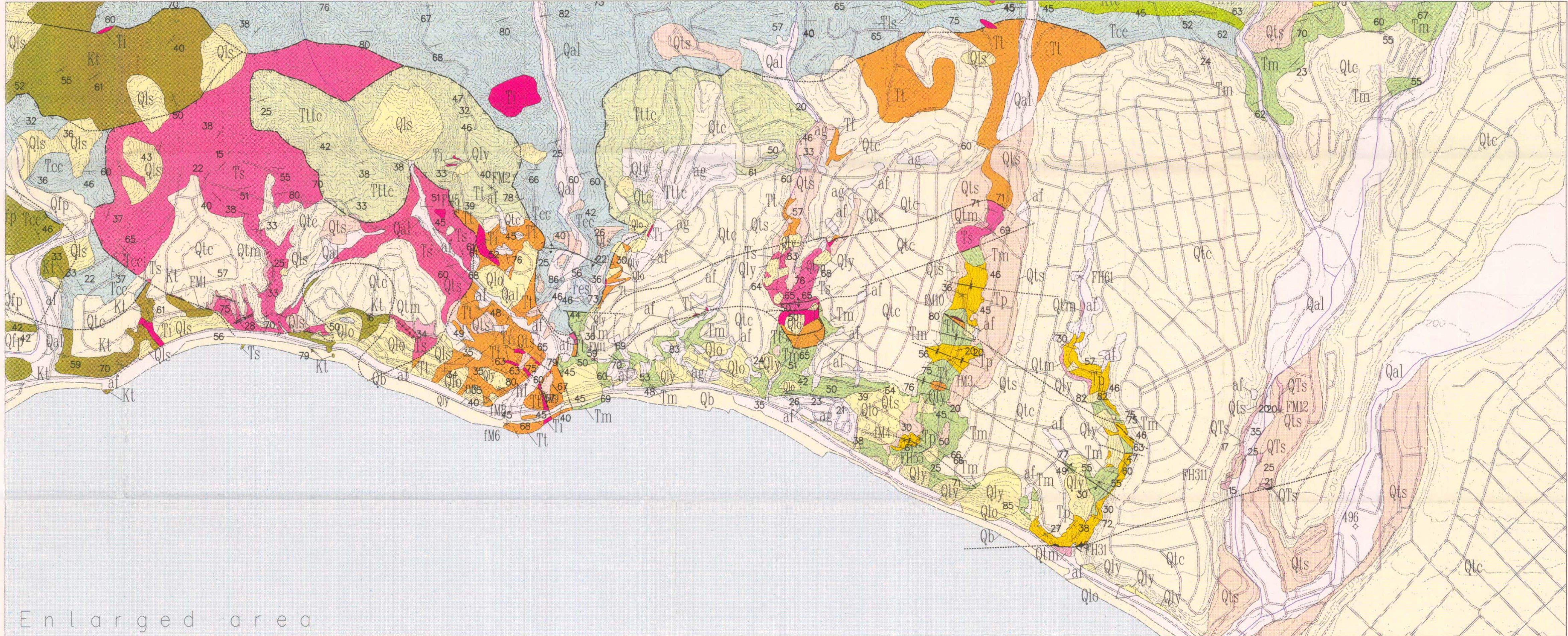
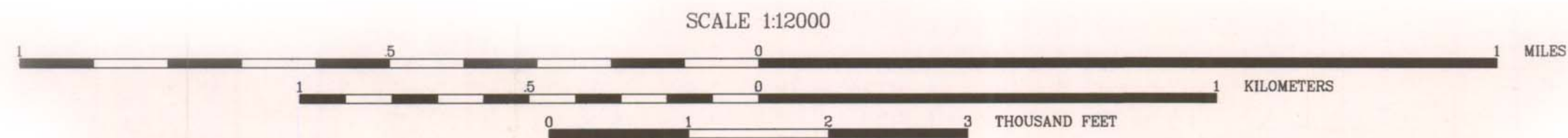


U. S. GEOLOGICAL SURVEY



Geology modified from sources shown in figure 1, Explanation. This map is preliminary and has not been reviewed for conformity with Geological Survey editorial standards or the North American Stratigraphic Code.



ENLARGEMENT OF PACIFIC PALISADES AREA, SE PART OF TOPANGA 7.5' QUADRANGLE,
SOUTHERN CALIFORNIA
(contour interval 25 ft.)
by R. F. Yerkes and R. H. Campbell